

# OFFICE SPACE FOR LEASE

## 14242 Ventura Blvd | Sherman Oaks



For more information please contact:

**Stacy Vierheilg-Fraser**  
Principal

818.933.0313

svierheilg@lee-re.com

DRE #00986794



Lee & Associates® - LA North/Ventura, Inc. • Corporate ID #01191898  
A Member of the Lee & Associates® Group of Companies  
15060 Ventura Blvd., Suite 100 • Sherman Oaks, CA 91403  
P:818.986.9800 F:818.933.0405 • www.leeandnorth.com

No warranty or representation is made to the accuracy of the foregoing information. Terms of sale or lease and availability are subject to change or withdrawal without notice.

### AVAILABLE

Suite	Size	Rate	Term	Notes
210	±2,160 SF	\$2.85 Full Service Gross	2-5 Years	Overlooking Ventura Blvd.
300/ Penthouse	±7,920 SF	\$2.45 Modified Gross	2-5 Years	Full Floor, Private Restrooms, Glass Conference Room. Tenant pays utilities, janitorial and trash; signage available.

### PARKING

2.7/1,000 SF @ \$125 per Car

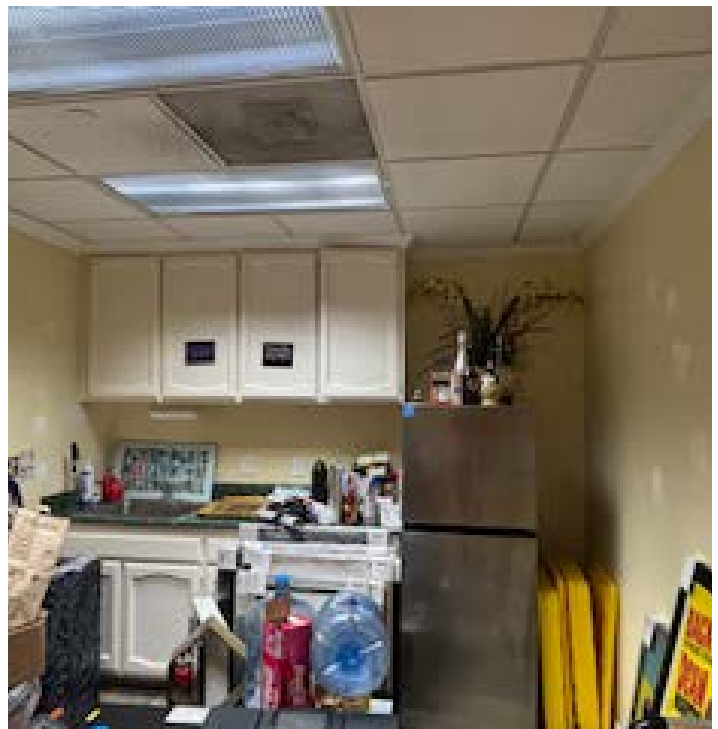
### PROPERTY HIGHLIGHTS

- Gorgeous Built-Out Suite
- Kitchen and Private Restroom with Shower
- Fully Secured in the Hottest Area of Sherman Oaks—Beautifully Designed, and Was in the Valley News for its Design Color, the Palm Trees, and Known by its Symbol, Statue of Liberty
- Great Mix of Offices and Open Area
- Walking Distance to Vast Restaurants
- Walk Score 96

# OFFICE SPACE FOR LEASE

## 14242 Ventura Blvd | Sherman Oaks

SUITE 210



For more information please contact:  
**Stacy Vierheilig-Fraser**  
818.933.0313  
svierheilig@lee-re.com  
DRE #00986794

 **LEE & ASSOCIATES**  
COMMERCIAL REAL ESTATE SERVICES

Lee & Associates® - LA NorthVentura, Inc. • Corporate ID #01191898  
A Member of the Lee & Associates® Group of Companies  
15060 Ventura Blvd., Suite 100 • Sherman Oaks, CA 91403  
P:818.986.9800 F:818.933.0405 • www.leeanorth.com

No warranty or representation is made to the accuracy of the foregoing information. Terms of sale or lease and availability are subject to change or withdrawal without notice.

# OFFICE SPACE FOR LEASE

## 14242 Ventura Blvd | Sherman Oaks

SUITE 210



For more information please contact:  
**Stacy Vierheilig-Fraser**  
818.933.0313  
svierheilig@lee-re.com  
DRE #00986794

 **LEE & ASSOCIATES**  
COMMERCIAL REAL ESTATE SERVICES

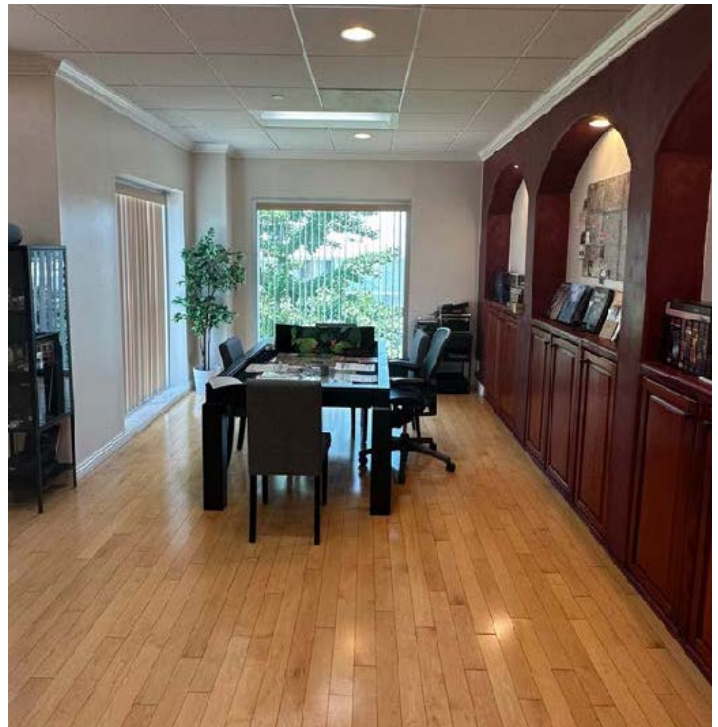
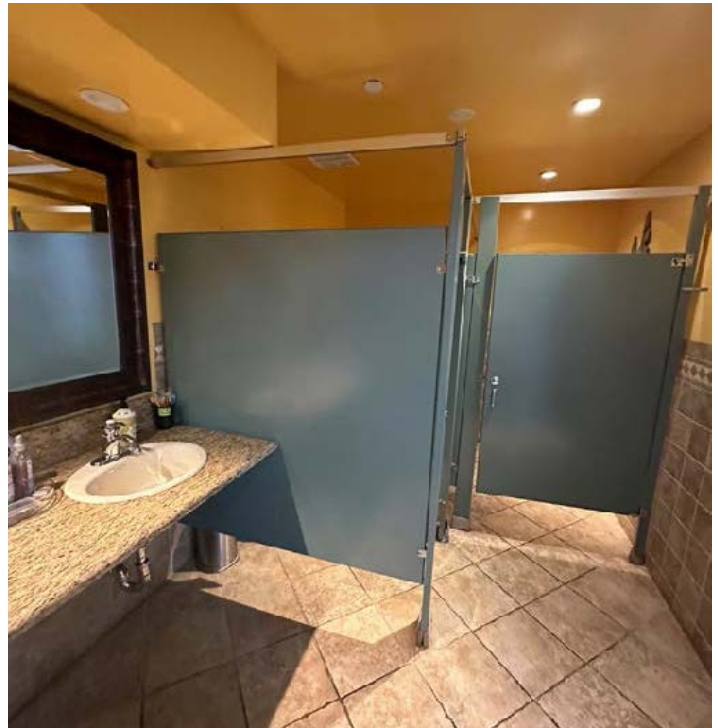
Lee & Associates® - LA NorthVentura, Inc. • Corporate ID #01191898  
A Member of the Lee & Associates® Group of Companies  
15060 Ventura Blvd., Suite 100 • Sherman Oaks, CA 91403  
P:818.986.9800 F:818.933.0405 • www.leeandnorth.com

No warranty or representation is made to the accuracy of the foregoing information. Terms of sale or lease and availability are subject to change or withdrawal without notice.

# OFFICE SPACE FOR LEASE

## 14242 Ventura Blvd | Sherman Oaks

SUITE 300



For more information please contact:  
**Stacy Vierheilig-Fraser**  
818.933.0313  
svierheilig@lee-re.com  
DRE #00986794

 **LEE & ASSOCIATES**  
COMMERCIAL REAL ESTATE SERVICES

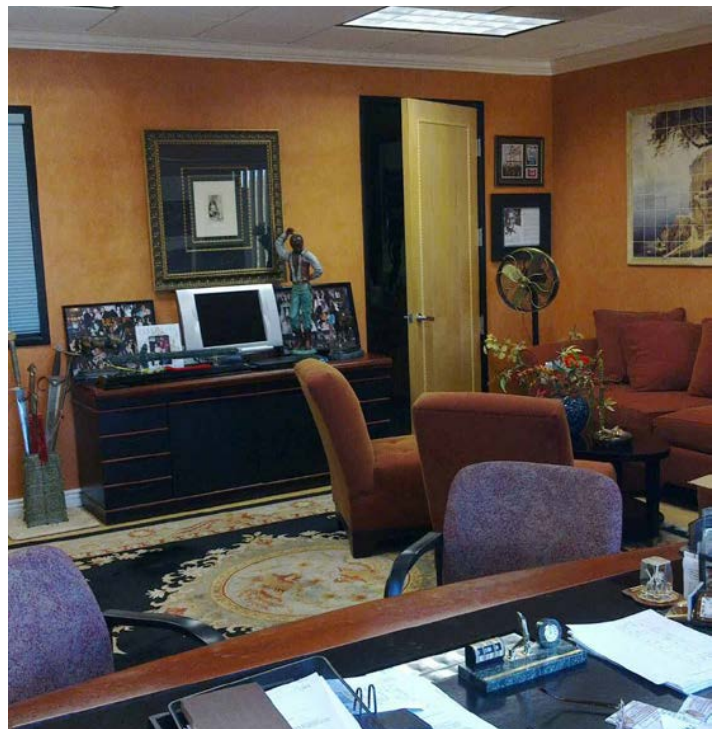
Lee & Associates® - LA North Ventura, Inc. • Corporate ID #01191898  
A Member of the Lee & Associates® Group of Companies  
15060 Ventura Blvd., Suite 100 • Sherman Oaks, CA 91403  
P:818.986.9800 F:818.933.0405 • www.leeanorth.com

No warranty or representation is made to the accuracy of the foregoing information. Terms of sale or lease and availability are subject to change or withdrawal without notice.

# OFFICE SPACE FOR LEASE

## 14242 Ventura Blvd | Sherman Oaks

SUITE 300



For more information please contact:  
**Stacy Vierheilig-Fraser**  
818.933.0313  
svierheilig@lee-re.com  
DRE #00986794

**LEE & ASSOCIATES**  
COMMERCIAL REAL ESTATE SERVICES

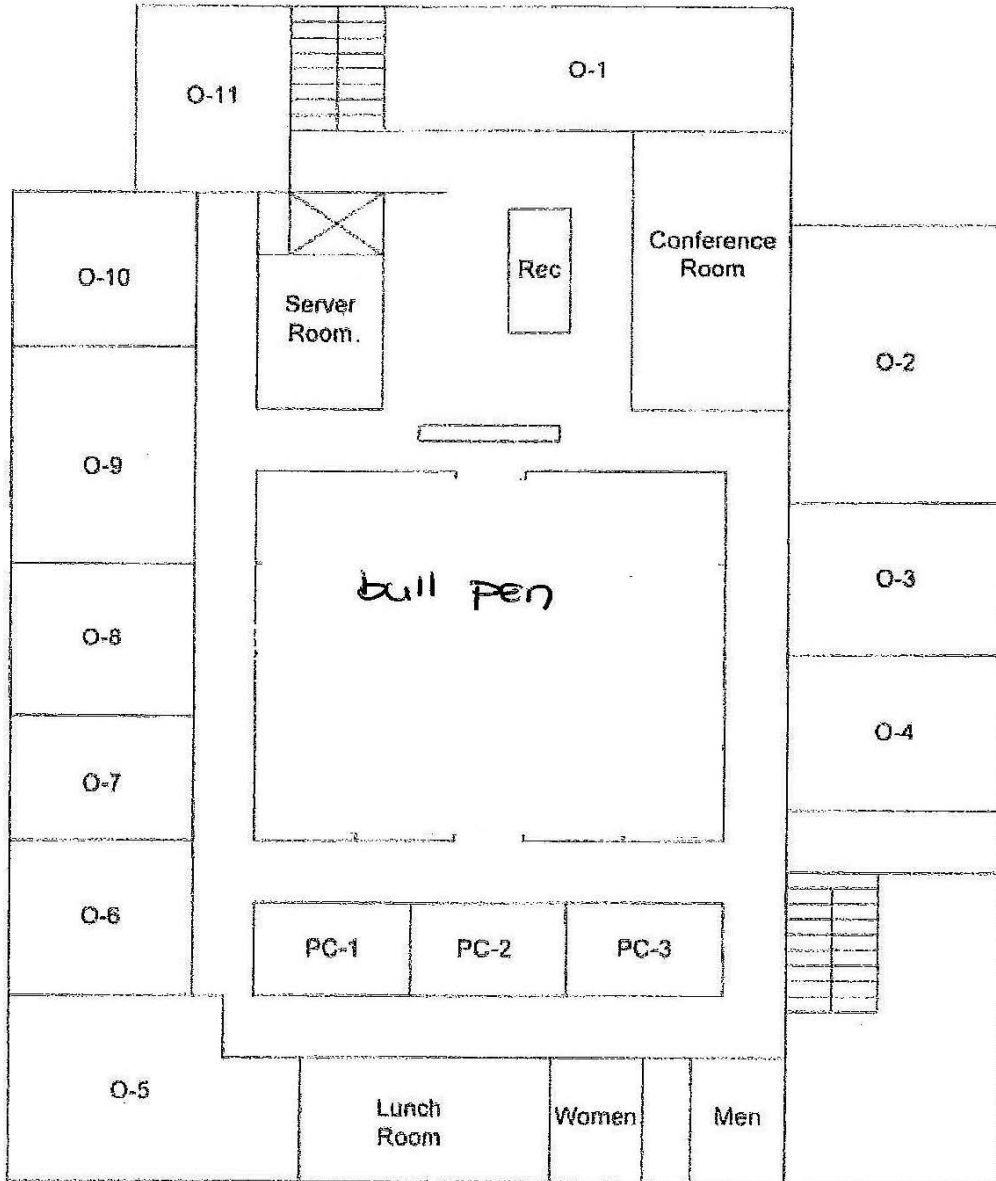
Lee & Associates® - LA NorthVentura, Inc. • Corporate ID #01191898  
A Member of the Lee & Associates® Group of Companies  
15060 Ventura Blvd., Suite 100 • Sherman Oaks, CA 91403  
P:818.986.9800 F:818.933.0405 • www.leeanorth.com

No warranty or representation is made to the accuracy of the foregoing information. Terms of sale or lease and availability are subject to change or withdrawal without notice.

# OFFICE SPACE FOR LEASE

## 14242 Ventura Blvd | Sherman Oaks

### FLOOR PLAN



NOT TO SCALE

For more information please contact:

**Stacy Vierheilig-Fraser**

818.933.0313

svierheilig@lee-re.com

DRE #00986794

**LEE & ASSOCIATES**  
COMMERCIAL REAL ESTATE SERVICES

Lee & Associates® - LA NorthVentura, Inc. • Corporate ID #01191898  
A Member of the Lee & Associates® Group of Companies  
15060 Ventura Blvd., Suite 100 • Sherman Oaks, CA 91403  
P:818.986.9800 F:818.933.0405 • www.leeandnorth.com

No warranty or representation is made to the accuracy of the foregoing information. Terms of sale or lease and availability are subject to change or withdrawal without notice.

# OFFICE SPACE FOR LEASE

## 14242 Ventura Blvd | Sherman Oaks



For more information please contact:  
**Stacy Vierheilig-Fraser**  
818.933.0313  
svierheilig@lee-re.com  
DRE #00986794

 **LEE & ASSOCIATES**  
COMMERCIAL REAL ESTATE SERVICES

Lee & Associates® - LA NorthVentura, Inc. • Corporate ID #01191898  
A Member of the Lee & Associates® Group of Companies  
15060 Ventura Blvd., Suite 100 • Sherman Oaks, CA 91403  
P:818.986.9800 F:818.933.0405 • www.leeanorth.com

No warranty or representation is made to the accuracy of the foregoing information. Terms of sale or lease and availability are subject to change or withdrawal without notice.

# OFFICE SPACE FOR LEASE

## 14242 Ventura Blvd | Sherman Oaks



For more information please contact:  
**Stacy Vierheilg-Fraser**  
 818.933.0313  
 svierheilg@lee-re.com  
 DRE #00986794

**LEE & ASSOCIATES**  
 COMMERCIAL REAL ESTATE SERVICES

Lee & Associates® - LA North/Ventura, Inc. • Corporate ID #01191898  
 A Member of the Lee & Associates® Group of Companies  
 15060 Ventura Blvd., Suite 100 • Sherman Oaks, CA 91403  
 P:818.986.9800 F:818.933.0405 • www.leeandnorth.com

No warranty or representation is made to the accuracy of the foregoing information. Terms of sale or lease and availability are subject to change or withdrawal without notice.