

# COLUMBIA SQUARE

HISTORY MEETS  
NEW HOLLYWOOD



**KILROY**

# Iconic Media Campus

---

The modern interpretation of a studio lot built on the fabled grounds of CBS Radio, Columbia Square encapsulates all that is glamorous and innovative.

Originally designed by William Lescaze, its state-of-the-art recording studios and theaters cemented Hollywood as the entertainment center of the universe. Columbia Square was the original home of innovative engineering, sound effects, editing, and film.

Understanding the property's deep significance and meaning to Hollywood, Kilroy Realty rehabilitated this iconic campus.

With careful investigation, planning, and commitment, Kilroy brought renewed life into the complex through restoration and rehabilitation of exterior and interior spaces, design elements in the ground level courtyard, and the addition of a 200-unit luxury residential tower.

Columbia Square is Kilroy Realty's first mixed-use redevelopment in Hollywood; it blends historical reuse with new construction to create a beautiful, modern environment where people live, work, and play. The upgrade for the Hollywood community was long awaited, and it's now here to stay.





# Campus Overview & Available Space

## EL CENTRO BUILDING 1500 N El Centro Ave

- Suite 120: ±4,860 RSF
- Suite 400: 18,276 RSF
- Suite 500: 18,170 RSF

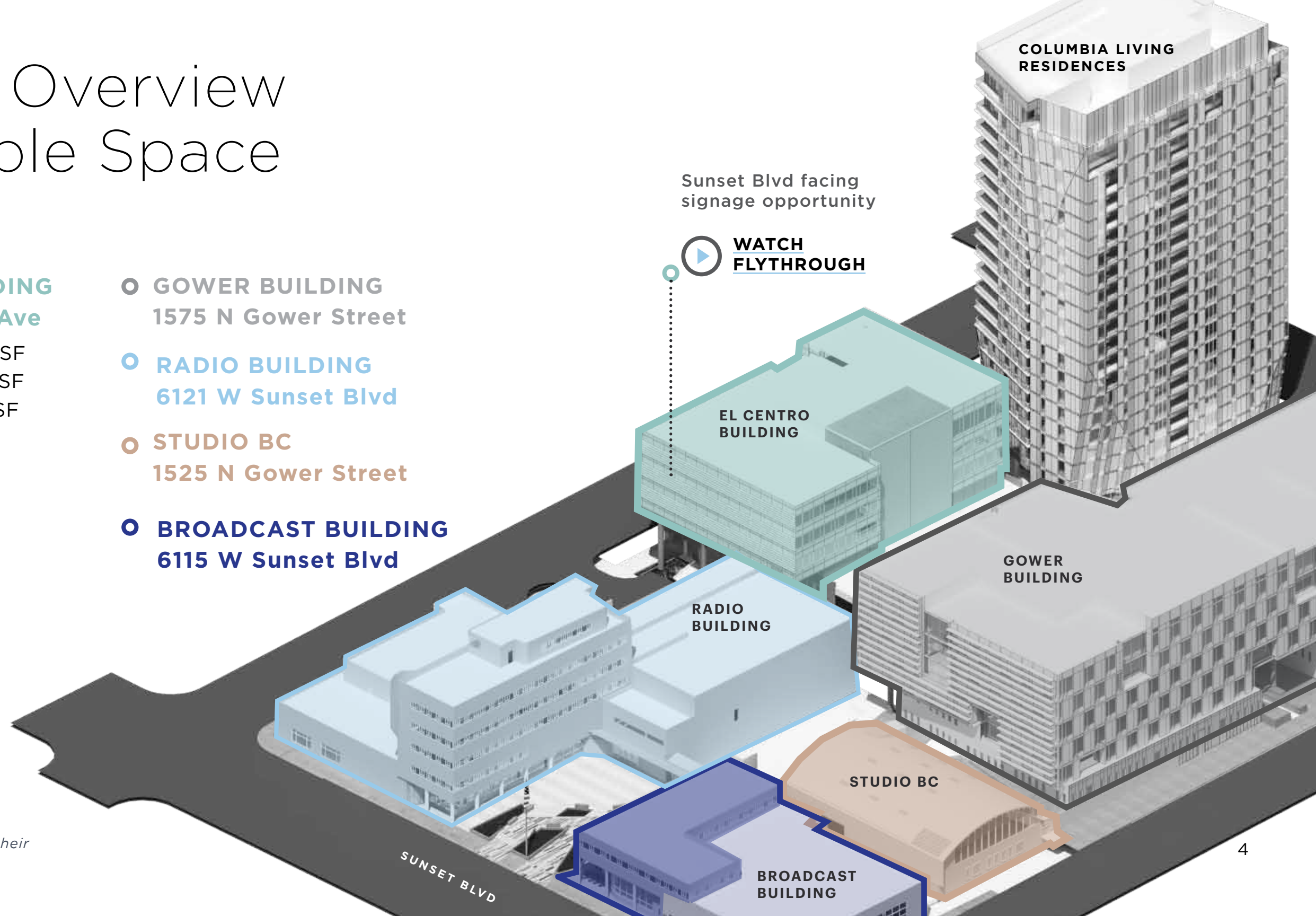
## GOWER BUILDING 1575 N Gower Street

## RADIO BUILDING 6121 W Sunset Blvd

## STUDIO BC 1525 N Gower Street

## BROADCAST BUILDING 6115 W Sunset Blvd

*\*Certain of these buildings are occupied and Kilroy makes no representation as the timing on their immediate or future availability.*



# Campus Experience

- Outdoor gathering areas including grand staircase
- Indoor and outdoor event space options
- Notable tenants include Paramount Global, Fender, Fulwell Entertainment/ SpringHill Company, LAIKA Studios, PortalOne and Miraculous Corp.
- On-site amenities include several restaurants, 24-hr security, secure parking with valet
- Dedicated loading and staging area with paparazzi-proof private entrances



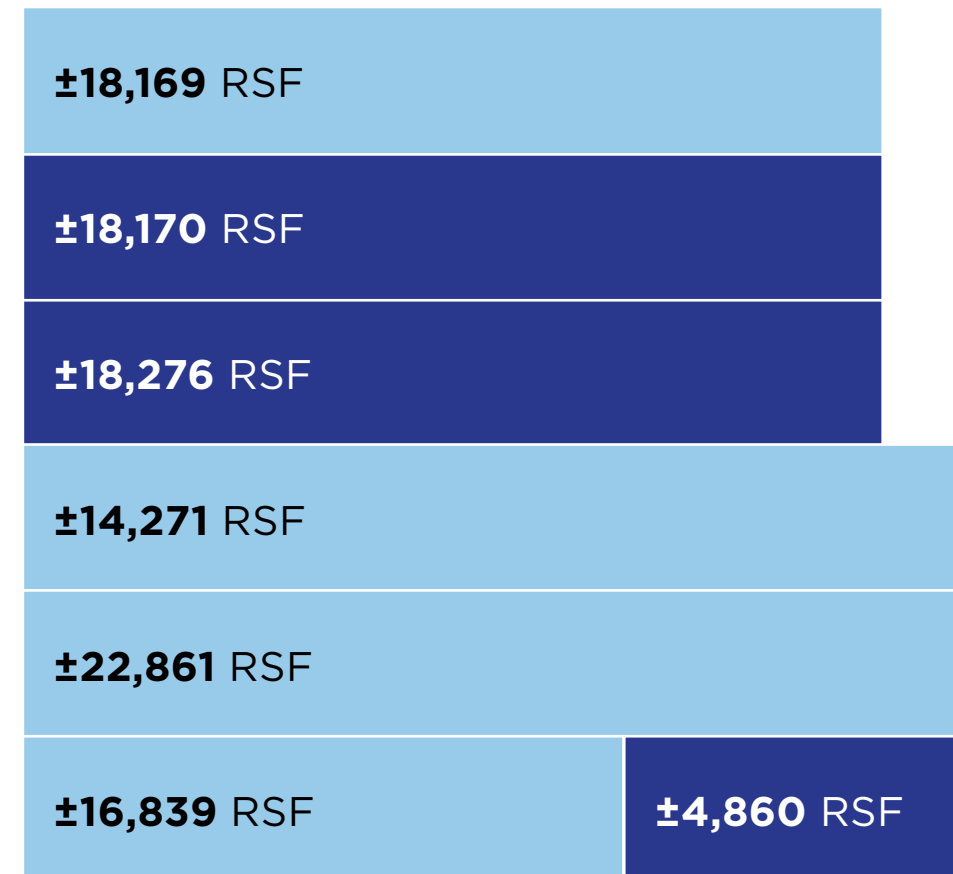


# Available Space

UP TO ±41K RSF AVAILABLE



[KILROYREALTY.COM/  
TOUR/1500\\_ELCENTRO](https://www.kilroyrealty.com/tour/1500_elcentro)



■ AVAILABLE  
■ LEASED



# El Centro Property Overview



**±113,000 RSF**

Property RBA



**±20,000 RSF**

Average floor plates



**LEED GOLD**

Efficient energy  
management system



**6**

Floors



**13'-16'**

Slab to slab



**PARKING**

2.75/1,000



**2016**

Building developed



**30' X 30'**

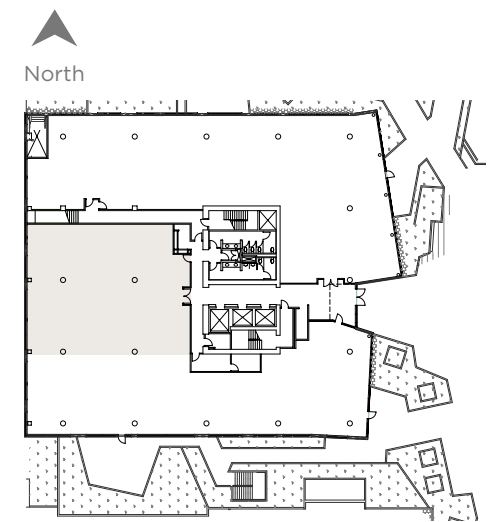
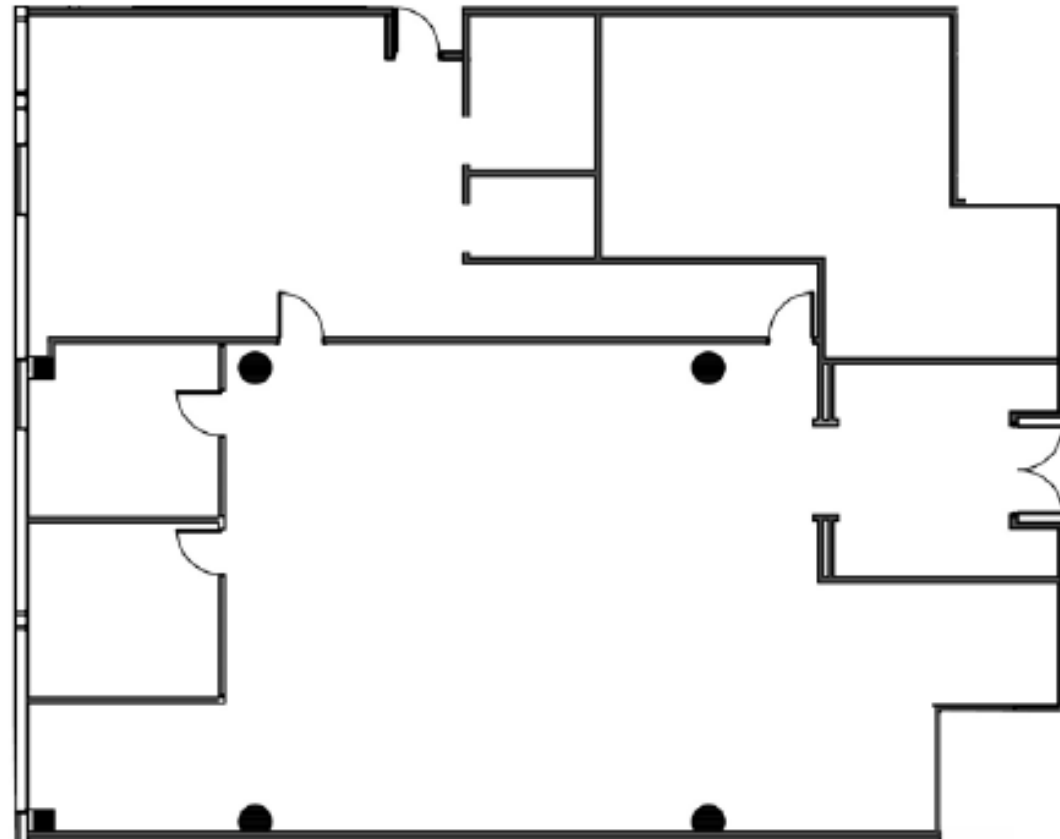
Column spacing

1500 N EL CENTRO AVE

# Ste 120

---

±4,860 RSF

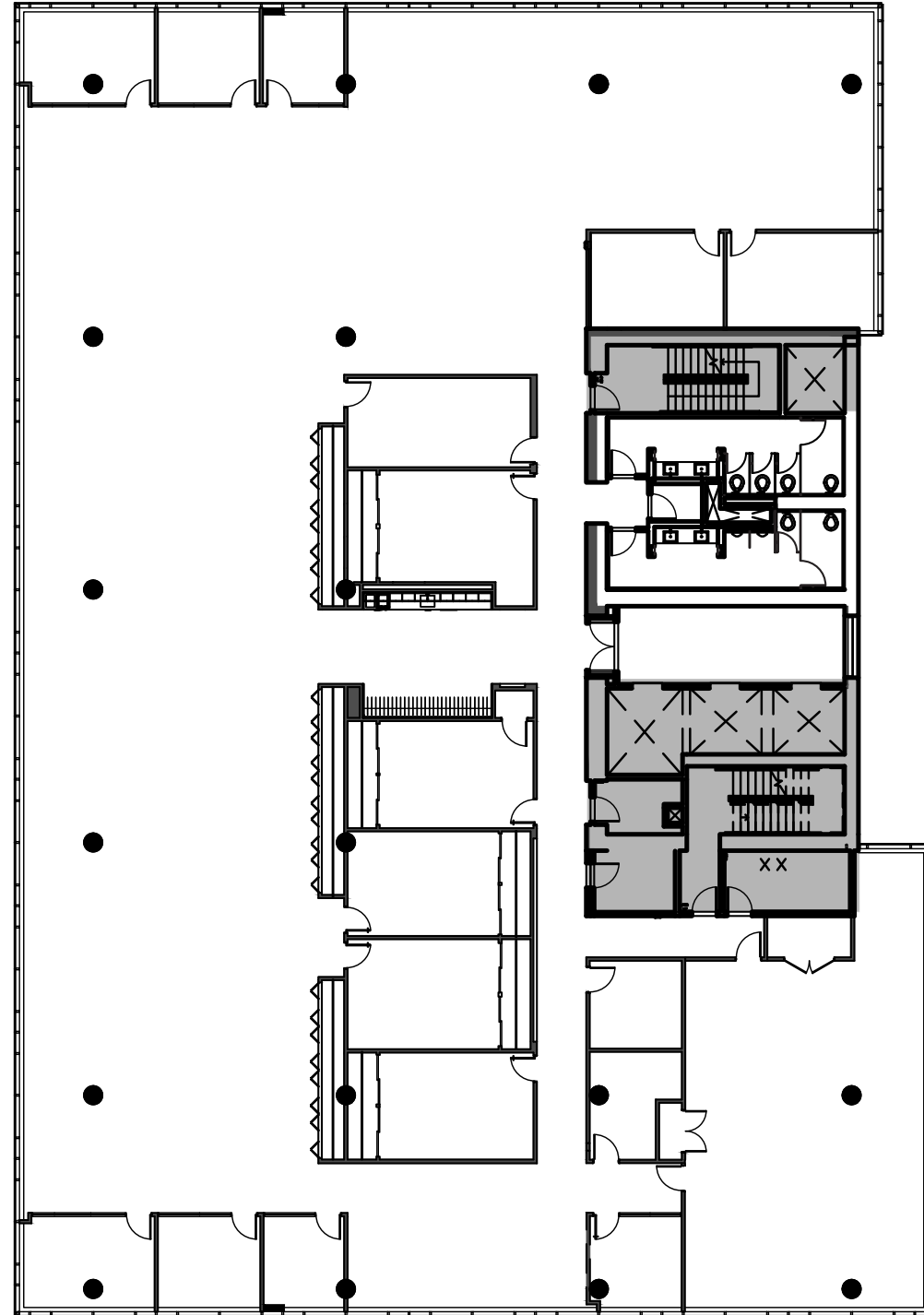
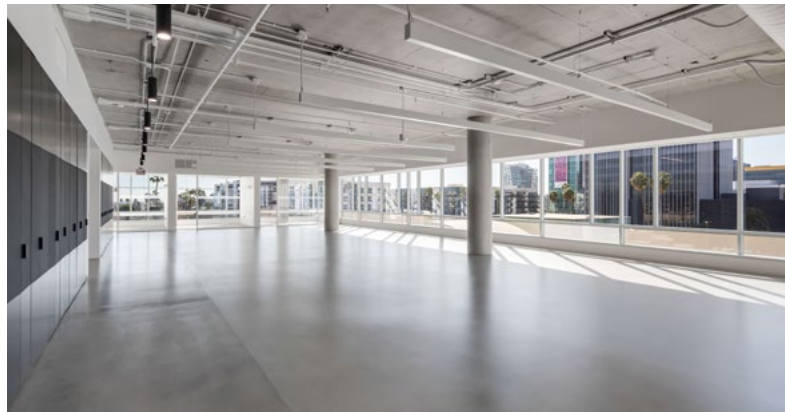


SUNSET BLVD

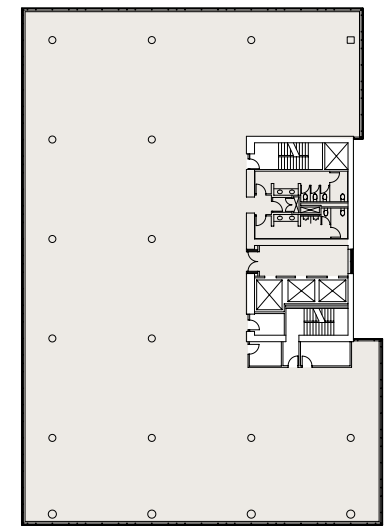
1500 N EL CENTRO AVE

# Ste 400

±18,276 RSF



North

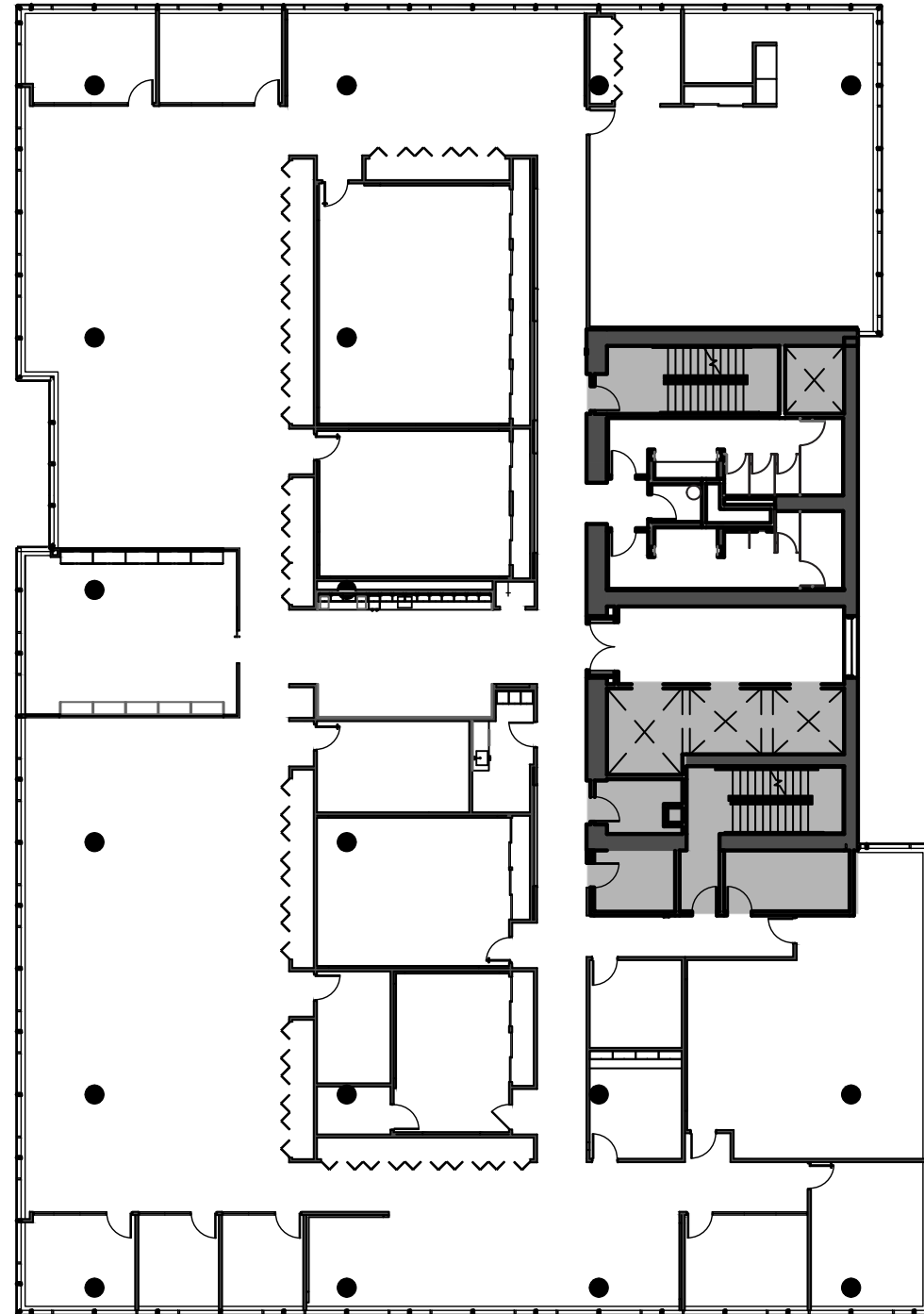
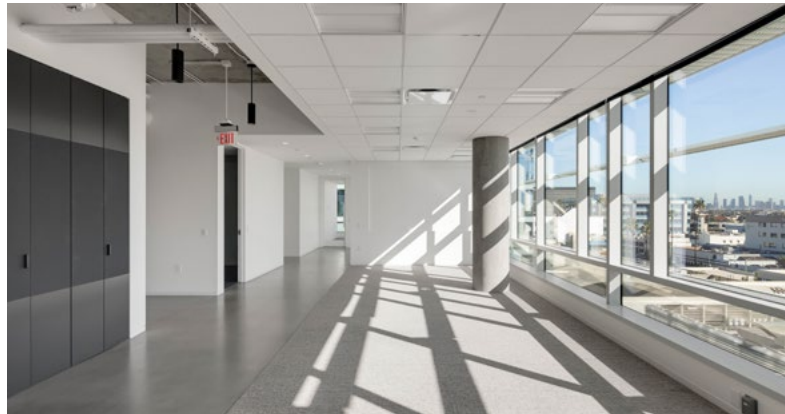


SUNSET BLVD

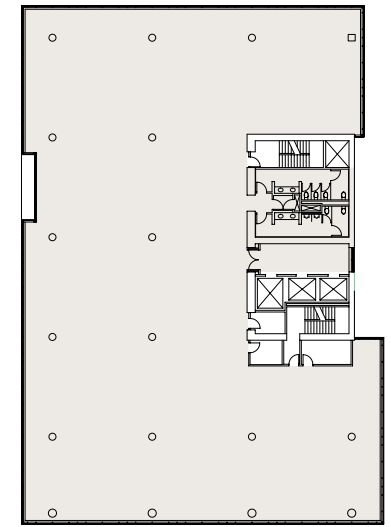
1500 N EL CENTRO AVE

# Ste 500

±18,170 RSF



North

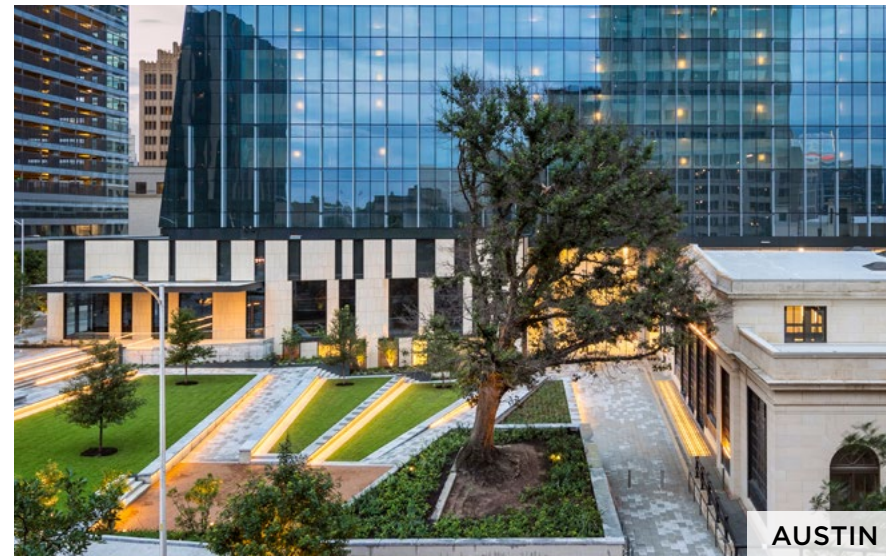


SUNSET BLVD

# Kilroy is Where Innovation Works

- ±16.8 sq. ft. in our operating portfolio and development pipeline\* (workplace and retail)
- We deliver properties in innovative hubs, designed and purpose-built for people with a focus on access, amenities, and wellness
- Leader in sustainable design and operations, with a deep commitment to our environment and communities

[kilroyrealty.com](http://kilroyrealty.com)



\*Square footages sourced from the Kilroy 1Q22 Supplemental and includes stabilized, tenant improvement, under construction, and development pipeline properties.



**Peter Hajimihalis**

lic. 01994663

+1 213 239 6399

peter.hajimihalis@jll.com

**Hayley Blockley**

lic. 01781682

+1 213 239 6054

hayley.blockley@jll.com

**COLUMBIASQUARE.COM**

Jones Lang LaSalle Brokerage, Inc. License #01856260. 515 South Flower Street, Suite 1300, Los Angeles, CA 90071

Although information has been obtained from sources deemed reliable, neither Owner nor JLL makes any guarantees, warranties or representations, express or implied, as to the completeness or accuracy as to the information contained herein. Any projections, opinions, assumptions or estimates used are for example only. There may be differences between projected and actual results, and those differences may be material. The Property may be withdrawn without notice. Neither Owner nor JLL accepts any liability for any loss or damage suffered by any party resulting from reliance on this information. If the recipient of this information has signed a confidentiality agreement regarding this matter, this information is subject to the terms of that agreement. © 2025 Jones Lang LaSalle IP, Inc. All rights reserved.