

**CORNER RETAIL SPACE • FULLY EQUIPPED WITH SPLIT SYSTEMS • PRIME RIDGEWOOD**



## 590 ONDERDONK AVENUE

LOCATED BETWEEN GROVE STREET AND MENAHAN STREET

- Approx. 360 SF of prime retail space
- Positioned along a high-traffic Ridgewood commercial corridor
- Strong pedestrian activity throughout the day
- Large street-facing windows offering excellent visibility and natural light
- Equipped with a split system. Heating and cooling systems in every room
- Private bathroom within the space
- Ideal for boutique retail, office, or service-based businesses
- Dry use only, with other uses considered.

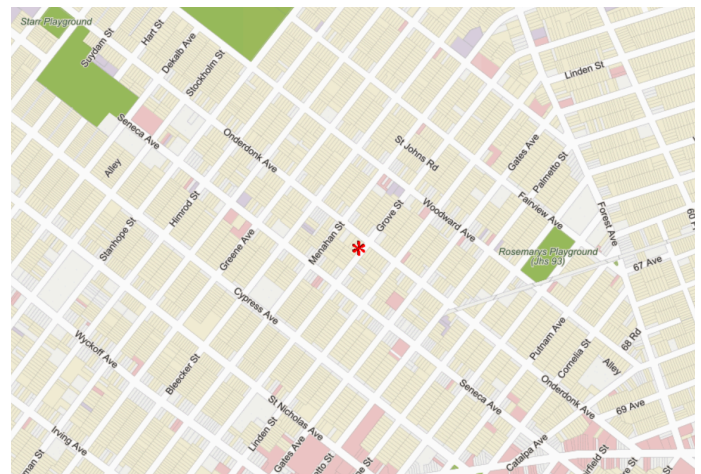
### LICENSED BROKER

EVERGREEN REALTY & INVESTMENTS

PHONE : 646.838.1378

E-MAIL : [INFO@EVRGREALTY.COM](mailto:INFO@EVRGREALTY.COM)

**\$2,795/MONTH**





FLOORPLAN:

