

89

GRAND STREET

Between Berry Street
& Wythe Avenue



Space Description

Size

Ground Floor ___ 3,200 SF

Ceiling Heights

Ground Floor ___ 13'

Frontage _____ 20'

Possession ___ 90 days
from lease signing



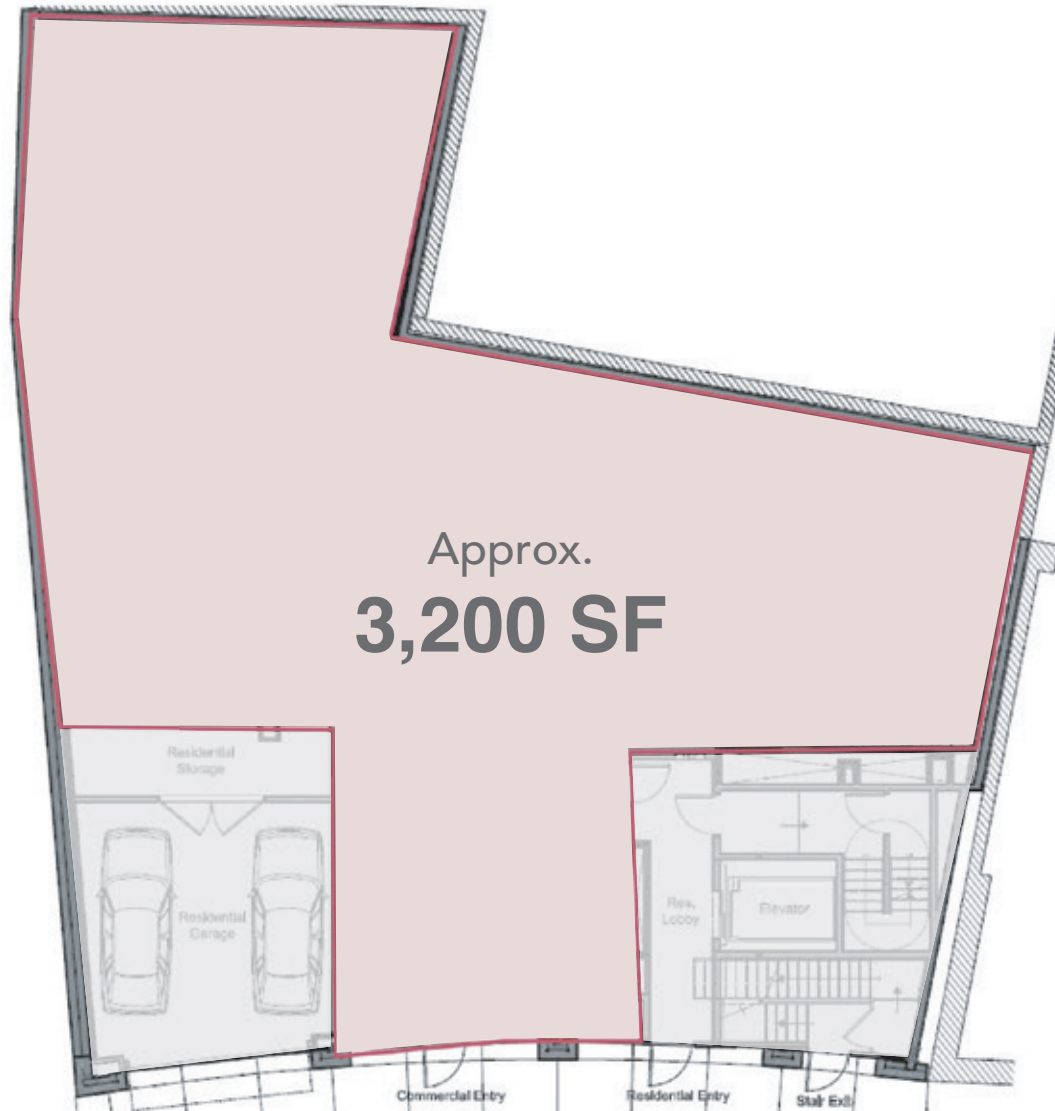
Neighbors

Supreme, MISIPASTA, 12 Chairs Cafe, Pilgrim Surf + Supply, Ume, OddFellows Ice Cream, Beam, Roberta's, Gelateria Gentile

Comments

- Currently Vintage Clothing Near Me
- Move-in-ready
- Can be vented for a restaurant or bar

Ground Floor



GARRY STEINBERG

Executive Managing Director & Principal

914.263.2575

gsteinberg@lee-associates.com

BRETT BROWNSTEIN

Associate Director

914.588.5586

bbrownstein@lee-associates.com

JORDAN COHEN

Associate Director

646.723.4703

jc@lee-associates.com





DOMINO PARK



89 GRAND STREET



GARRY STEINBERG

Executive Managing Director & Principal

914.263.2575

gsteinberg@lee-associates.com

BRETT BROWNSTEIN

Associate Director

914.588.5586

bbrownstein@lee-associates.com

JORDAN COHEN

Associate Director

646.723.4703

jc@lee-associates.com

