

INDUSTRIAL SPACE IN ALACHUA COMMERCE CENTER FOR LEASE

17742 NW 115th Avenue | Building 250 | Gainesville, FL 32615

12,800± SF – 25,600± SF | \$9.00/SF NNN



DAN DROTOS, MSRE, SIOR, CCIM

President & Managing Principal

☎ 352.420.9889

☎ 954.551.9846

ddrotos@lee-associates.com

LAUREN VAZQUEZ, SIOR

Vice President

☎ 352.420.9889

☎ 352.222.4590

lvazquez@lee-associates.com

RORY CAUSEAUX, P.E.

Principal

☎ 352.420.9889

☎ 352.317.6341

rcauseaux@lee-associates.com

 **LEE &
ASSOCIATES**
COMMERCIAL REAL ESTATE SERVICES

AERIAL VIEW

Alachua Commerce Center | 17742 NW 115th Avenue | Gainesville, FL 32615

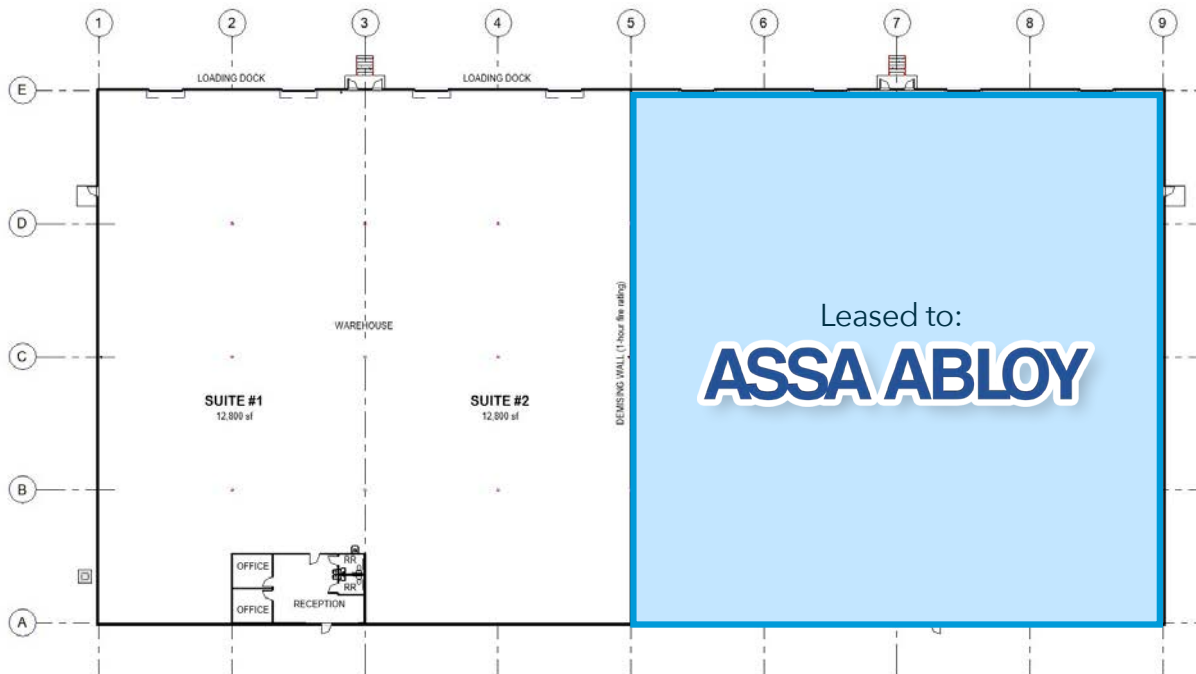


NW 115th Ave

NW 173rd St

BUILDING 250 | FLOOR PLAN

Alachua Commerce Center | 17742 NW 115th Avenue | Gainesville, FL 32615



UTILITIES

- Electric: Clay
- Water and Wastewater: City of Alachua
- Internet: Windstream or Cox [Fiber]

AVAILABLE: 12,800± SF – 25,600± SF

CLEAR HEIGHT: 24'

10'X10' ROLL UP DOORS
all dock height

BUILDING 250 | AERIAL VIEW

Alachua Commerce Center | 17742 NW 115th Avenue | Gainesville, FL 32615

◀ Alachua Commerce Center Entrance

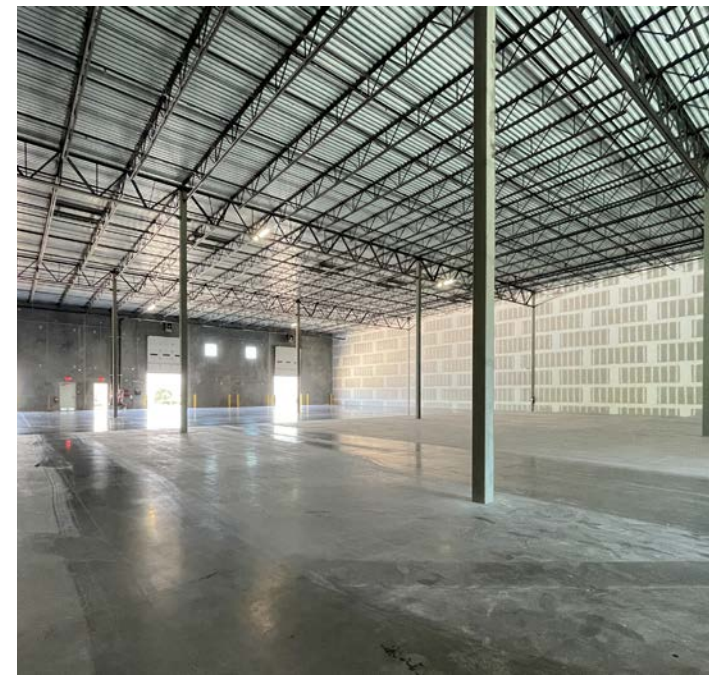
AVAILABLE

NW 115th Ave



BUILDING 250 | PHOTO GALLERY

Alachua Commerce Center | 17742 NW 115th Avenue | Gainesville, FL 32615



LOCATION

Alachua Commerce Center | 17742 NW 115th Avenue | Gainesville, FL 32615



DOLLAR GENERAL
Distribution Center

DOLLAR GENERAL

SITE

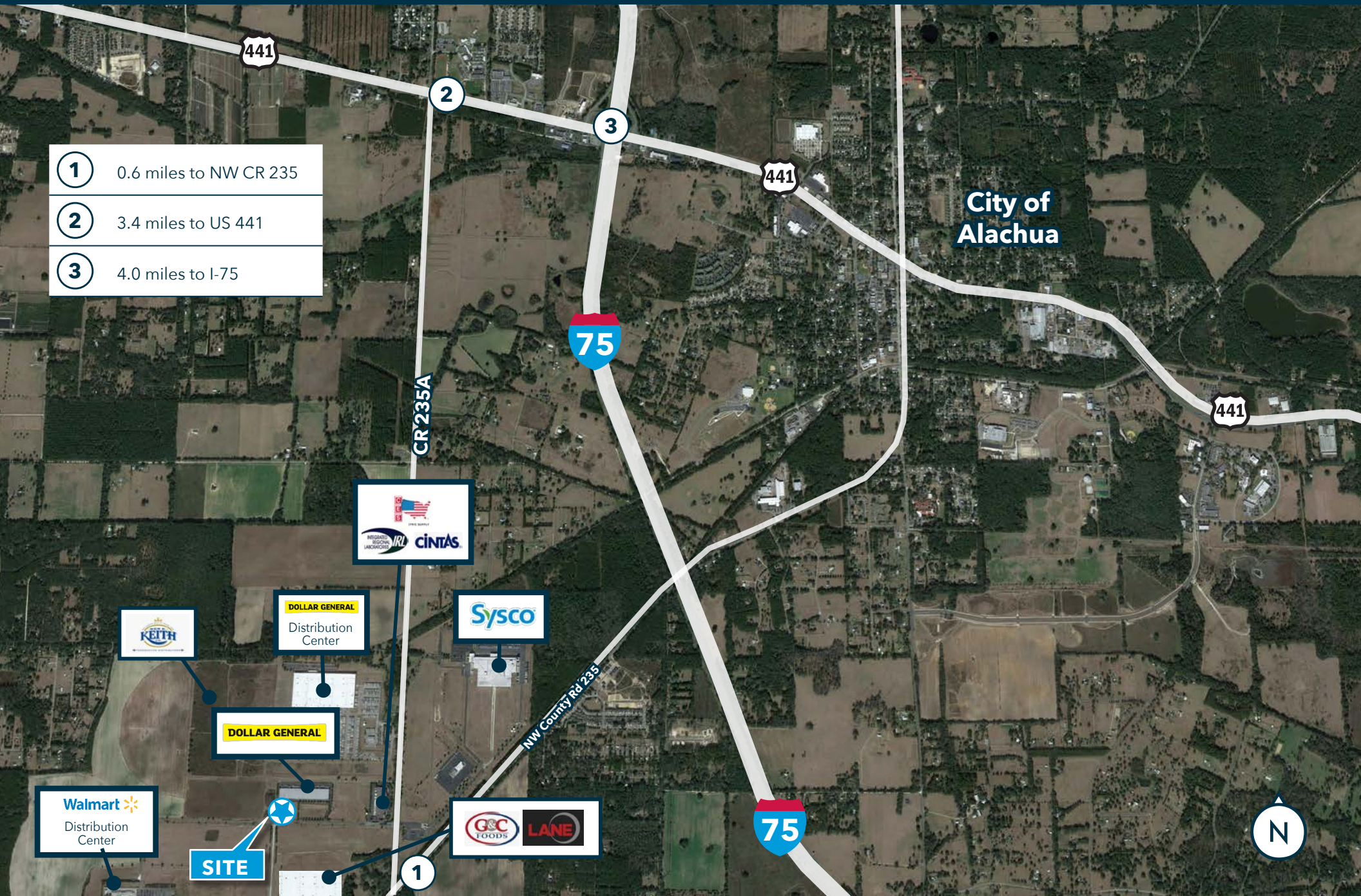
ASSA ABLOY

Walmart 
Distribution Center



LOCATION

Alachua Commerce Center | 17742 NW 115th Avenue | Gainesville, FL 32615



1 0.6 miles to NW CR 235

2 3.4 miles to US 441

3 4.0 miles to I-75

City of
Alachua

75

441

CR 235A

IRL
CINTAS

DOLLAR GENERAL
Distribution Center

Sysco

KEITH

DOLLAR GENERAL

Walmart
Distribution Center

SITE

G&C FOODS
LANE

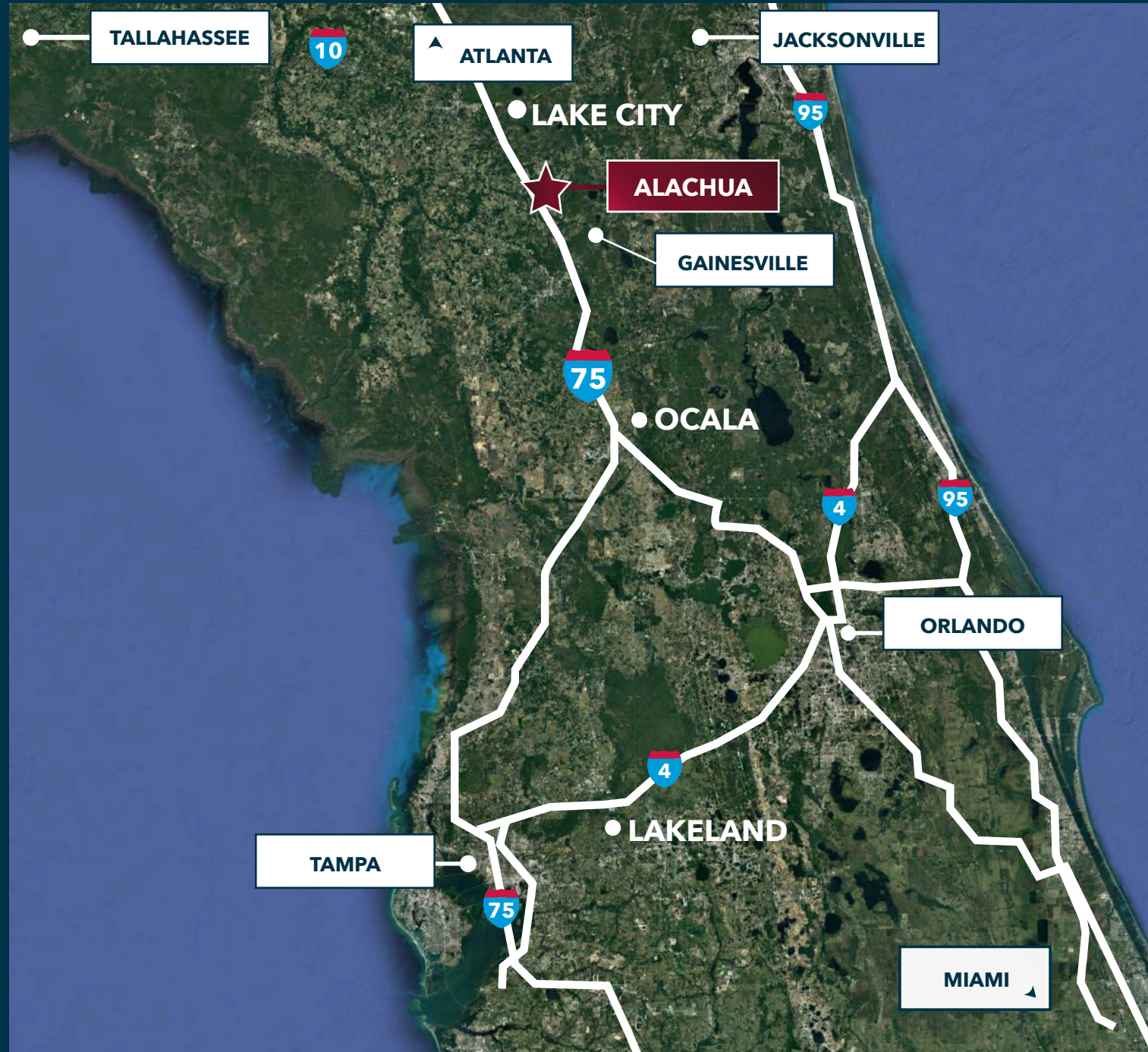
75

N

LOCATION

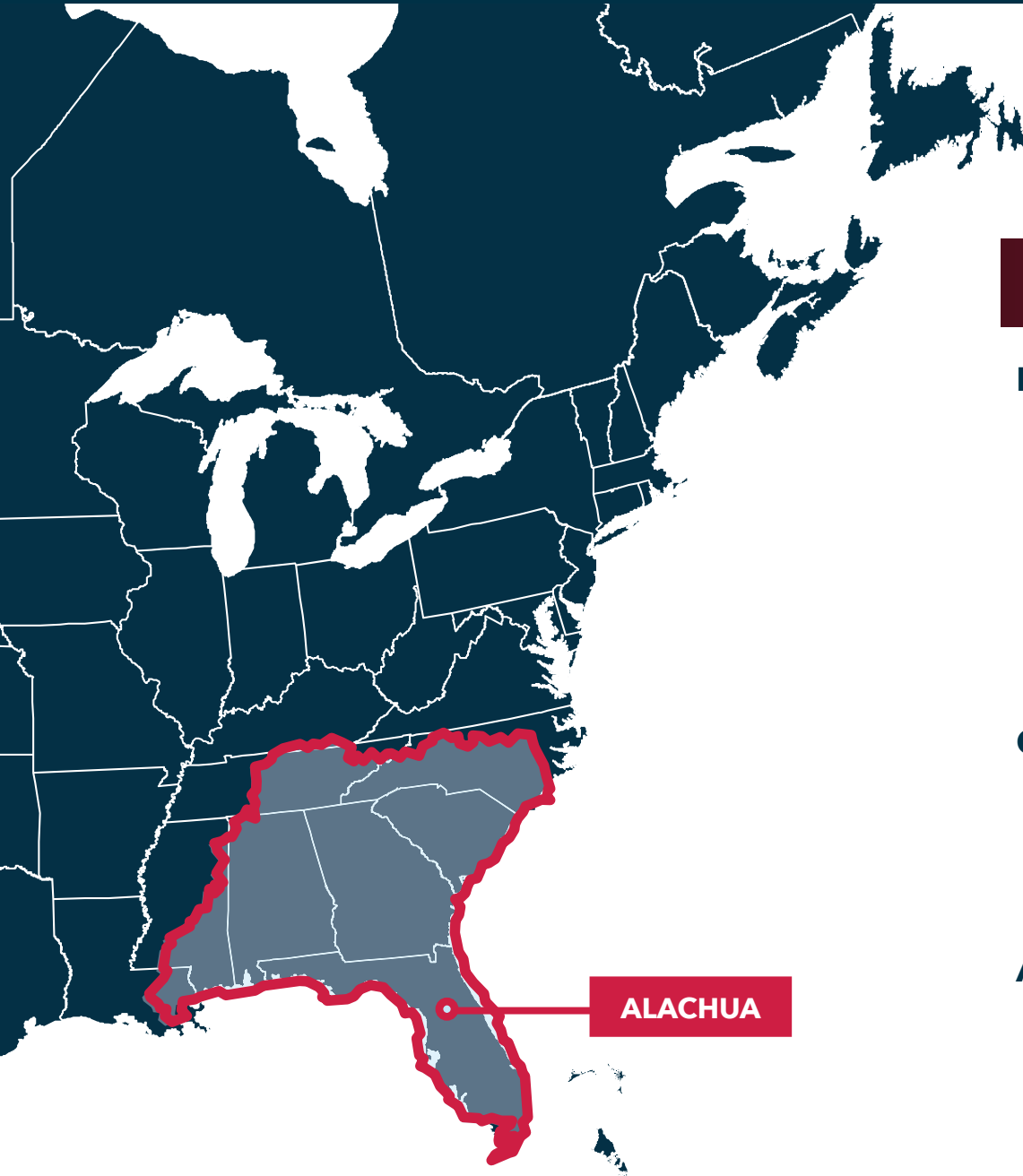
Alachua Commerce Center | 17742 NW 115th Avenue | Gainesville, FL 32615

- **GAINESVILLE, FL**
19 miles, 31 mins
- **INTERCHANGE FOR I-75/I-10**
50.3 miles, 47 mins
- **JACKSONVILLE, FL**
77 miles, 1 hr 28 mins
- **TALLAHASSEE, FL**
137 miles, 2 hrs 7 mins
- **TAMPA, FL**
147 miles, 2 hrs 9 mins
- **ATLANTA, GA**
318 miles, 4 hrs 44 mins
- **MIAMI, FL**
353 miles, 5 hrs 14 mins



LOCATION

Alachua Commerce Center | 11600 NW 173rd Street | Gainesville, FL 32615



WITHIN 8 HOUR DRIVE TIME

Florida

- Jacksonville
- Orlando
- Tampa
- Tallahassee
- Pensacola
- Fort Lauderdale
- Miami

Georgia

- Savannah
- Atlanta
- Athens
- Columbus

Alabama

- Birmingham
- Mobile
- Huntsville

Louisiana

- New Orleans

Mississippi

- Hattiesburg
- Biloxi

South Carolina

- Charleston
- Greenville
- Columbia

North Carolina

- Charlotte
- Wilmington
- Fayetteville

Tennessee

- Chattanooga
- Knoxville

INDUSTRIAL SPACE IN ALACHUA COMMERCE CENTER FOR LEASE

17742 NW 115th Avenue | Building 250 | Gainesville, FL 32615

12,800± SF – 25,600± SF | \$9.00/SF NNN

DAN DROTOS, MSRE, SIOR, CCIM

President & Managing Principal

☎ 352.420.9889

☎ 954.551.9846

ddrotos@lee-associates.com

LAUREN VAZQUEZ, SIOR

Vice President

☎ 352.420.9889

☎ 352.222.4590

lvazquez@lee-associates.com

RORY CAUSSEUX, P.E.

Principal

☎ 352.420.9889

☎ 352.317.6341

rcausseux@lee-associates.com

Alachua Commerce
Center Entrance

**LEE &
ASSOCIATES**
COMMERCIAL REAL ESTATE SERVICES