

# FOR LEASE

- Free surface parking for visitors
- Reserved tenant parking
- Extended operating hours;  
7AM-7PM M-F, 7AM-6PM SAT
- Renovated common areas
- Locally owned and managed
- Short walk to metro
- Daycare on site
- Operable windows
- **5<sup>th</sup> Floor features separate  
24-hour HVAC system and  
24/7 back-up power**

## ***BCC Professional Center*** 4401 East-West Highway Bethesda, Maryland 20814



<u>Suite</u>	<u>Size</u>	<u>Contiguous</u>
400	2,398 R.S.F.	3,480 R.S.F.
401	1,082 R.S.F.	
403	3,612 R.S.F.	5,524 R.S.F.
404	1,092 R.S.F.	
405	820 R.S.F.	
<b>503</b>	<b>1,758 R.S.F.</b>	

*For more details or to arrange a tour  
please contact:*

**301.961.9696**

**William K. Montrose**  
**Ext. 203**

[wmontrose@amrcommercial.com](mailto:wmontrose@amrcommercial.com)

**Sam Farnum**  
**Ext. 216**

[sfarnum@amrcommercial.com](mailto:sfarnum@amrcommercial.com)



Although all information furnished is from sources we deem reliable, such information has not been verified and no express representation is made, nor is any to be implied, as to the accuracy thereof, and it is submitted subject to errors, omissions, changes of price/rental or other conditions prior to sale or lease, and subject to withdrawal without notice.



ALEXANDER, MONTROSE, RITTENBERG  
Commercial Real Estate Brokerage  
Est. 1994

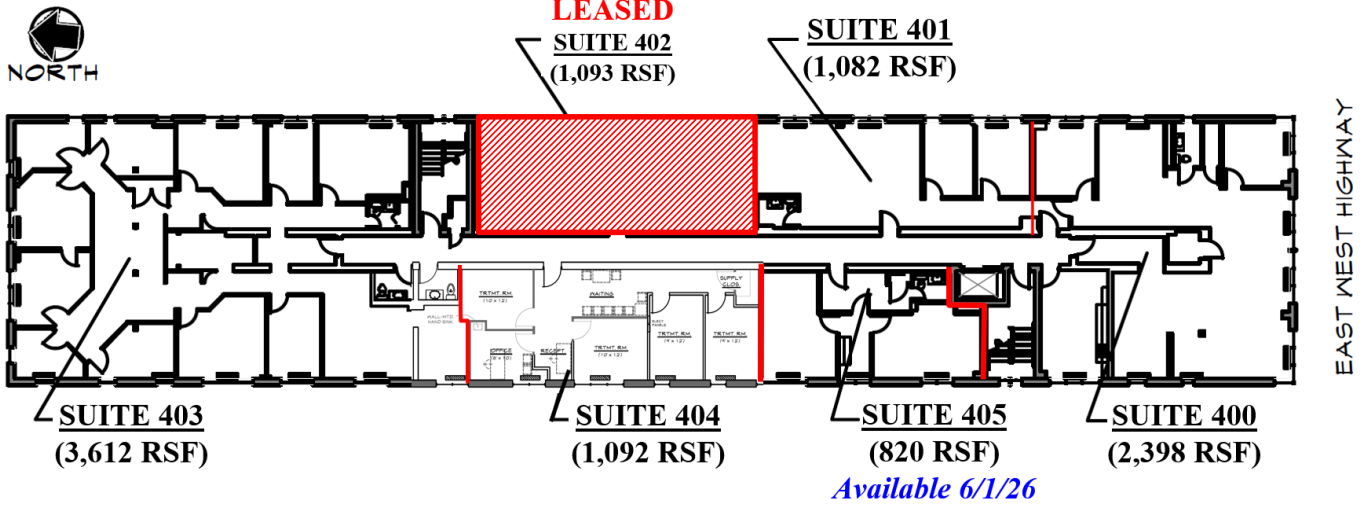
*Celebrating*  
**32**  
*Years*  
1994-2026



Energy Star Certified

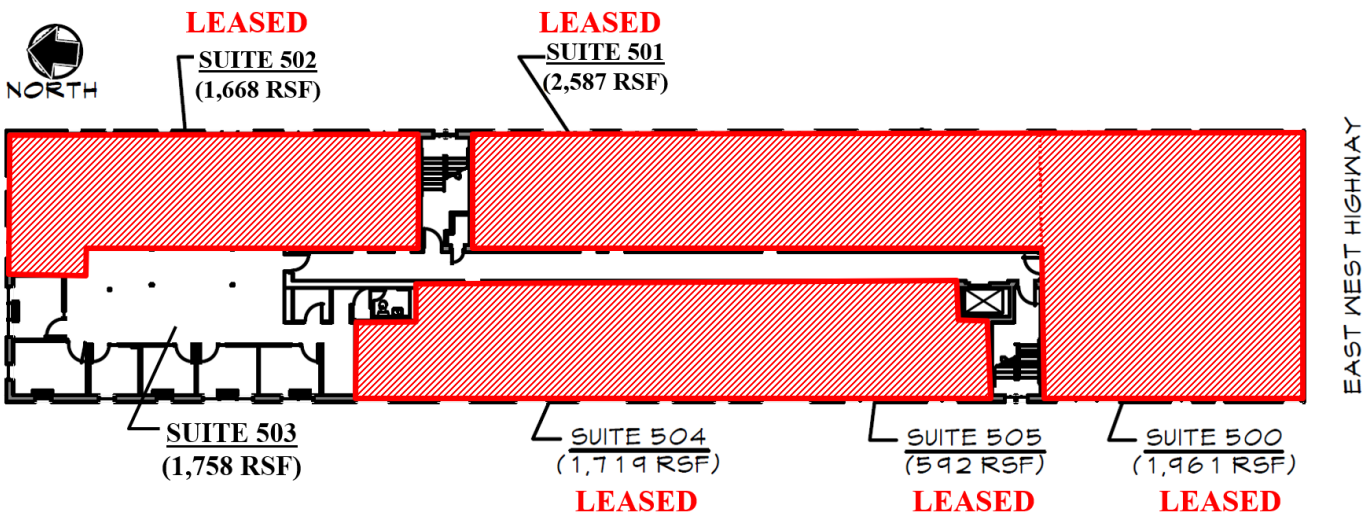
# 4<sup>th</sup> Floor

820 – 5,524 RSF Available



# 5<sup>th</sup> Floor

1,758 RSF Available



NOT TO SCALE | MEASUREMENTS APPROXIMATE

Although all information furnished is from sources we deem reliable, such information has not been verified and no express representation is made, nor is any to be implied, as to the accuracy thereof, and it is submitted subject to errors, omissions, changes of price/rental or other conditions prior to sale or lease, and subject to withdrawal without notice.