

2000-2036 Senter Road - San Jose, CA
±8,158 to 19,578 SF INDUSTRIAL UNITS
DOCK LOADING AND GRADE LEVEL

FOR LEASE



JEFF VO

jeff@gdcommercial.com

408.877.9900

Lic 01441068

TRINH WONG

trinh@gdcommercial.com

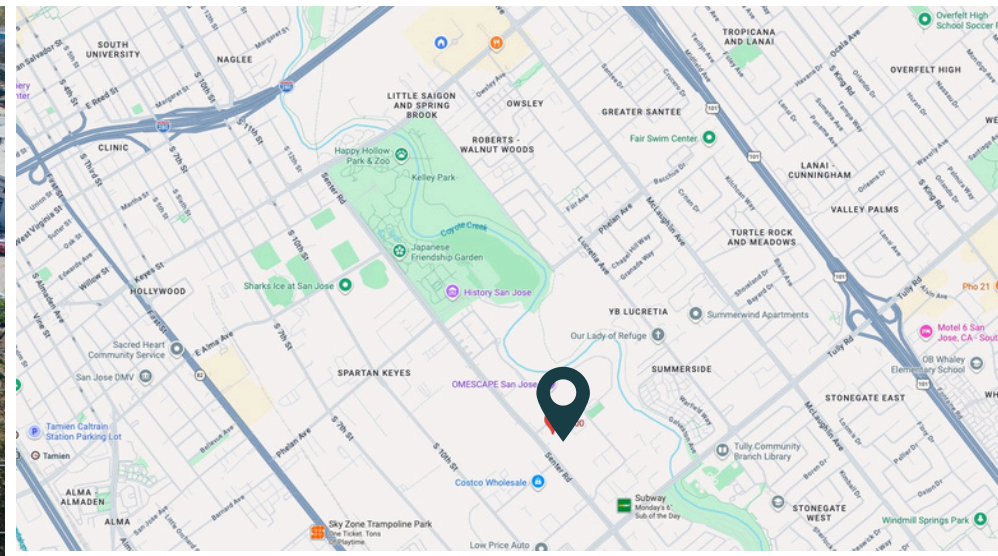
408.610.8800

Lic 01482858



2000-2036 Senter Road - San Jose, CA ±8,158 to 19,578 SF INDUSTRIAL UNITS DOCK LOADING AND GRADE LEVEL

FOR LEASE



PROPERTY OVERVIEW

GD Commercial is pleased to exclusively present the opportunity to lease the Multi-Tenant Industrial Building located at 2000-2036 Senter Road, with warehouse units size ranges from ±8,158 to 19,578 SF.

OFFERING SUMMARY

ASKING RATE:	\$1.50 to \$1.60 NNN
BUILDING SIZE:	±8,158 to ±19,578 SF
NNN EXPENSE:	Est. \$0.41 / SF
PARKING RATIO:	2.18/1,000 SF
POWER:	225 AMPS / 480 V
ZONING:	A(PD)/ Light Industrial
YEAR BUILT:	1997

PROPERTY HIGHLIGHTS

- ± 8,158 SF Industrial Warehouse ideal for showroom and signage
- ±9,240 SF Industrial Warehouse with multiple private offices and restroom
- ± 11,420 SF Industrial Warehouse with approx. ±2,000 SF Office with HVAC
- All units have Dock Loading (10'x12') and Grade Level Door (10'x12')
- High Ceiling up to 21' clear height
- Fully sprinklered, Skylights, Insulated ceiling
- Close to Costco, Little Saigon Vietnam Town, San Jose State University

JEFF VO

jeff@gdcommercial.com
408.877.9900
Lic 01441068

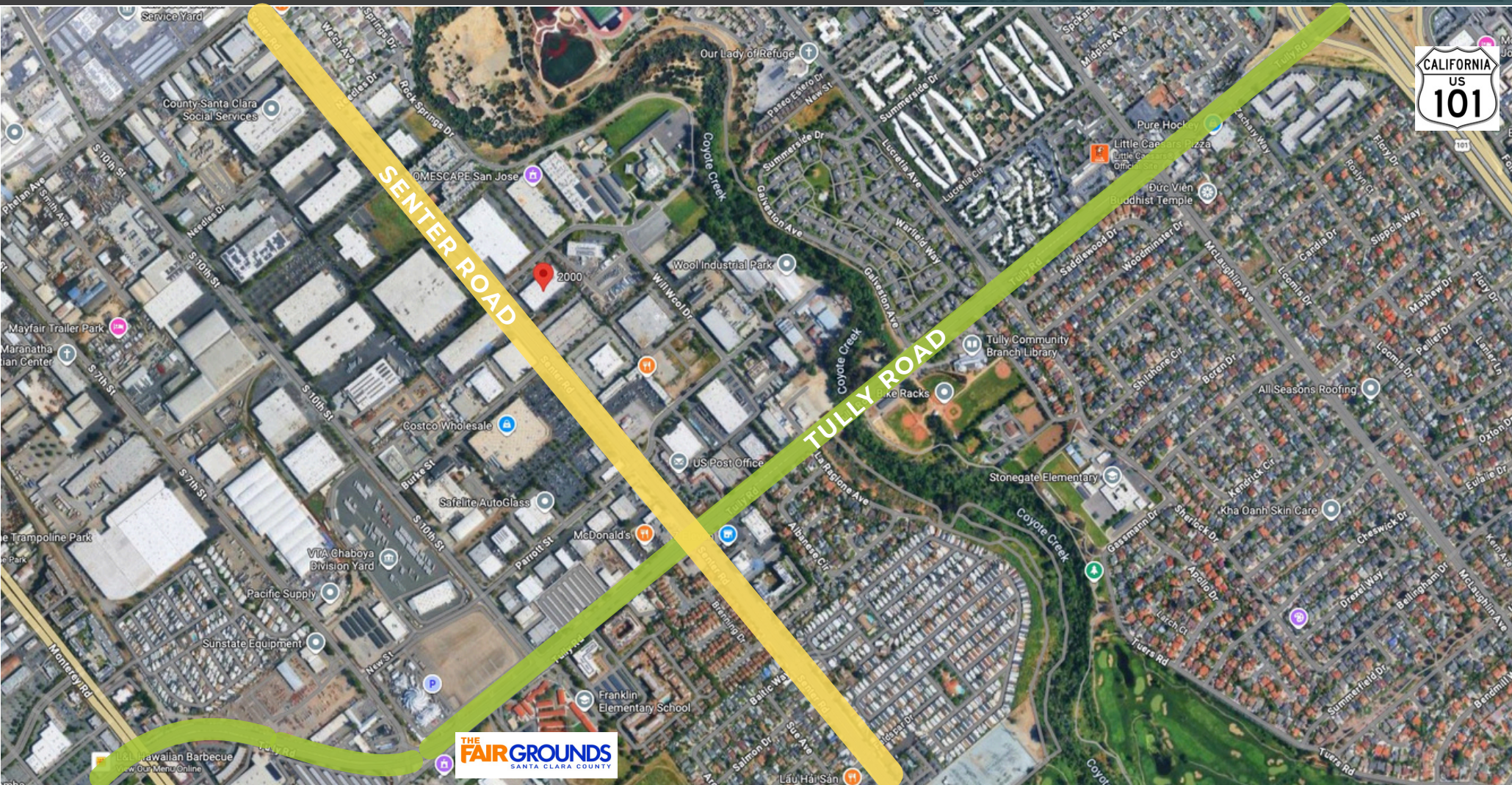
TRINH WONG

trinh@gdcommercial.com
408.610.8800
Lic 01482858



2000-2036 Senter Road - San Jose, CA
±8,158 to 19,578 SF INDUSTRIAL UNITS
DOCK LOADING AND GRADE LEVEL

FOR LEASE



JEFF VO

jeff@gdcommercial.com

408.877.9900

Lic 01441068

TRINH WONG

trinh@gdcommercial.com

408.610.8800

Lic 01482858



2000-2036 Senter Road - San Jose, CA
±8,158 to 19,578 SF INDUSTRIAL UNITS
DOCK LOADING AND GRADE LEVEL

FOR LEASE



JEFF VO

jeff@gdcommercial.com

408.877.9900

Lic 01441068

TRINH WONG

trinh@gdcommercial.com

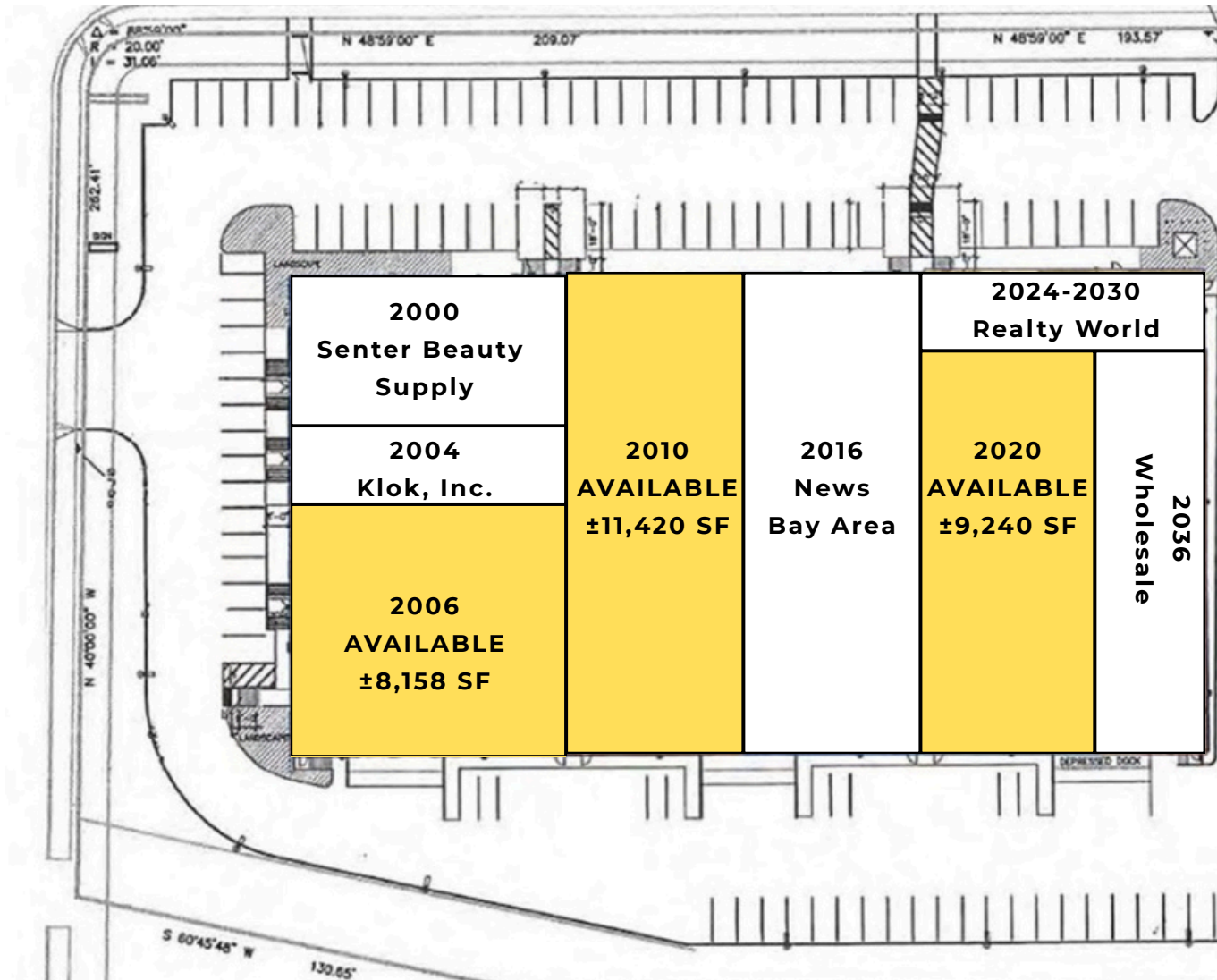
408.610.8800

Lic 01482858



2000-2036 Senter Road - San Jose, CA
±8,158 to 19,578 SF INDUSTRIAL UNITS
DOCK LOADING AND GRADE LEVEL

FOR LEASE



JEFF VO

jeff@gdcommercial.com

408.877.9900

Lic 01441068

TRINH WONG

trinh@gdcommercial.com

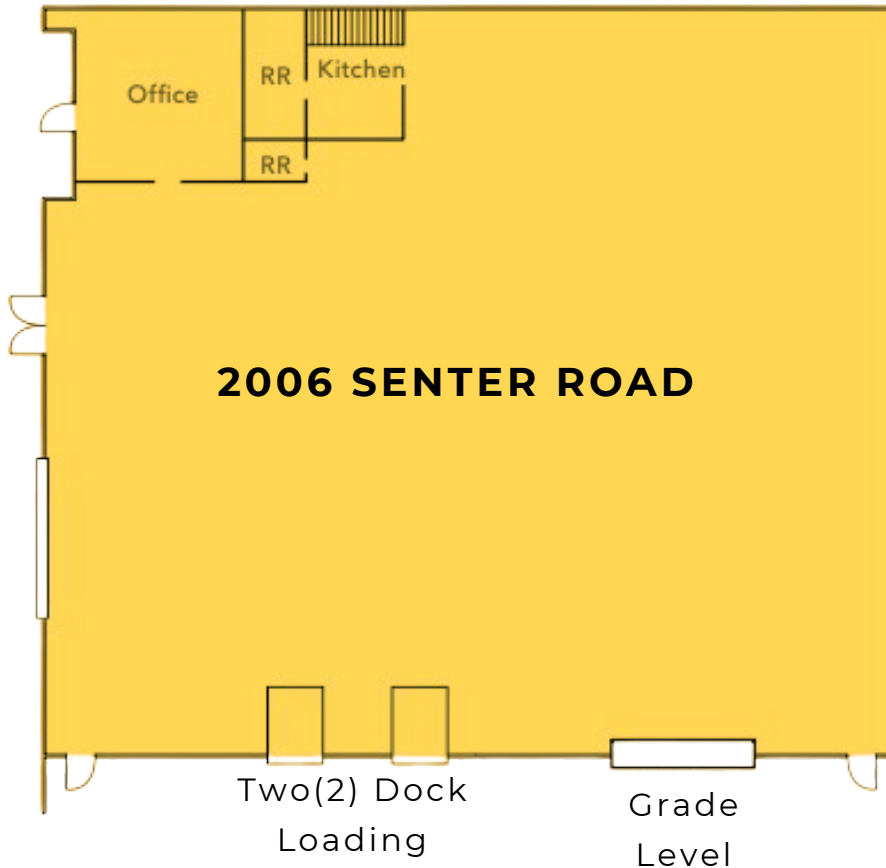
408.610.8800

Lic 01482858



2000-2036 Senter Road - San Jose, CA
±8,158 to 19,578 SF INDUSTRIAL UNITS
DOCK LOADING AND GRADE LEVEL

FOR LEASE



2006 SENTER ROAD

- ±8,158 SF
- Corner Unit
- Mezzanine
- Two(2) Dock Loading
- Grade Level Door
- 225 AMPs / 480 Volt
- Can combine with unit 2010 (up to ±19,578 SF)
- Great Visibility
- Ideal for showroom

Floor plans not to scale

JEFF VO

jeff@gdcommercial.com
408.877.9900
Lic 01441068

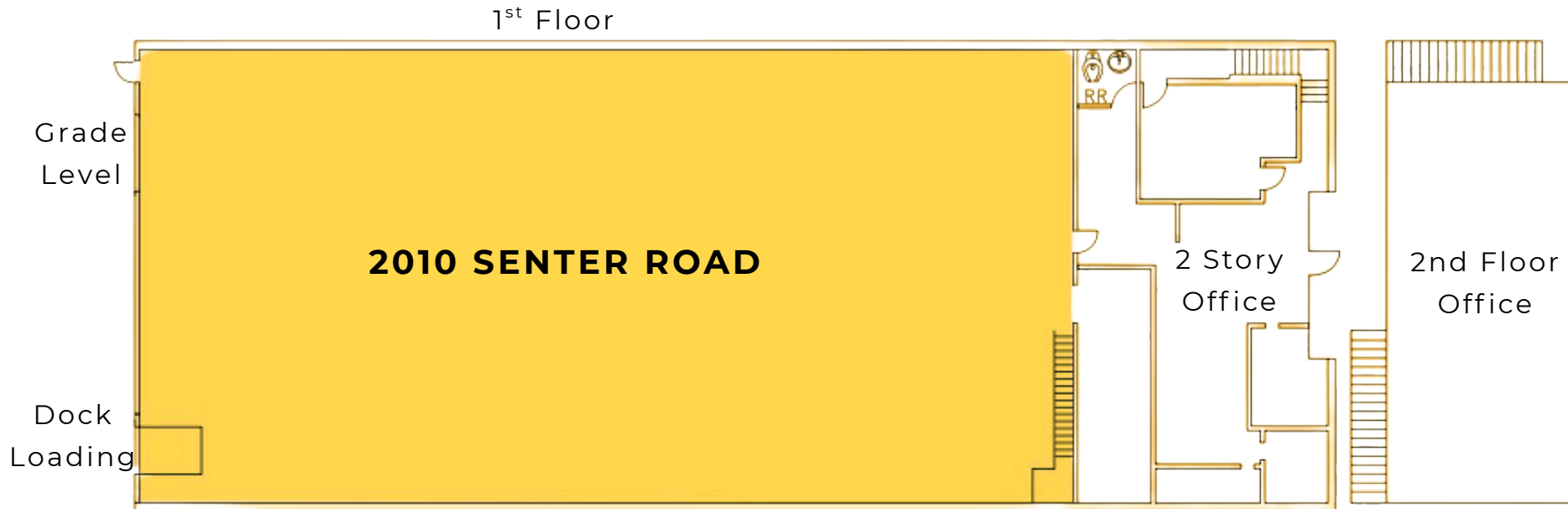
TRINH WONG

trinh@gdcommercial.com
408.610.8800
Lic 01482858



2000-2036 Senter Road - San Jose, CA
±8,158 to 19,578 SF INDUSTRIAL UNITS
DOCK LOADING AND GRADE LEVEL

FOR LEASE



- ±11,420 SF
- 2-Story Office
- Dock Loading
- Grade Level Door
- 225 AMPs / 480 Volt
- Can combine with unit 2006 (up to ±19,578 SF)

Floor plans not to scale

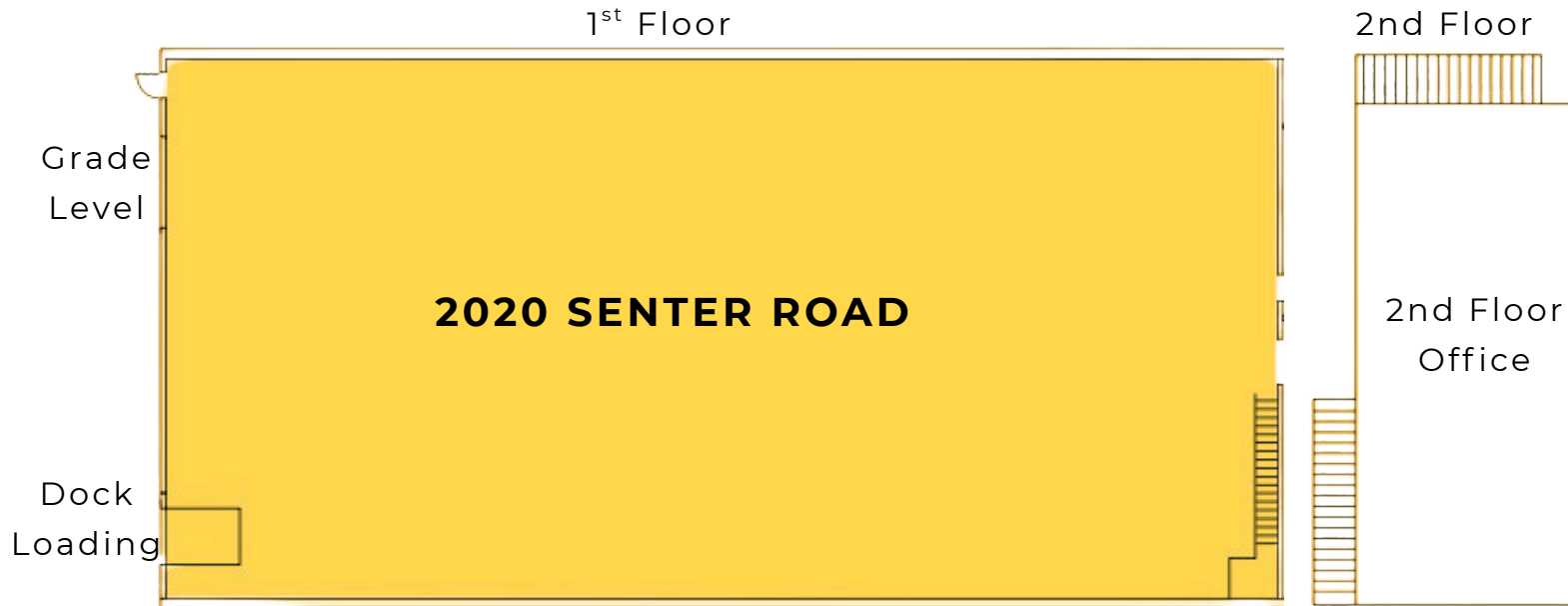
JEFF VO
jeff@gdcommercial.com
408.877.9900
Lic 01441068

TRINH WONG
trinh@gdcommercial.com
408.610.8800
Lic 01482858



2000-2036 Senter Road - San Jose, CA
±8,158 to 19,578 SF INDUSTRIAL UNITS
DOCK LOADING AND GRADE LEVEL

FOR LEASE



- ±9,240 SF
- 2nd Floor Office
- Dock Loading
- Grade Level Door
- 225 AMPs / 480 Volt

Floor plans not to scale

JEFF VO

jeff@gdcommercial.com

408.877.9900

Lic 01441068

TRINH WONG

trinh@gdcommercial.com

408.610.8800

Lic 01482858



2000-2036 Senter Road - San Jose, CA
±8,158 to 19,578 SF INDUSTRIAL UNITS
DOCK LOADING AND GRADE LEVEL

FOR LEASE

FRONT BUILDING



BACK BUILDING
Dock Loading
Grade Level Doors



JEFF VO

jeff@gdcommercial.com

408.877.9900

Lic 01441068

TRINH WONG

trinh@gdcommercial.com

408.610.8800

Lic 01482858



2000-2036 Senter Road - San Jose, CA
±8,158 to 19,578 SF INDUSTRIAL UNITS
DOCK LOADING AND GRADE LEVEL

FOR LEASE



INTERIOR
19'8" Clear Height
225 AMPs / 480 V
Skylights



OFFICE

JEFF VO

jeff@gdcommercial.com

408.877.9900

Lic 01441068

TRINH WONG

trinh@gdcommercial.com

408.610.8800

Lic 01482858

