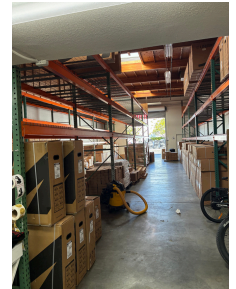


# 3,000 SQ FT OFFICE/WAREHOUSE UNIT

**FOR LEASE**  
1027 Calle Trepadora #2  
San Clemente



## JOHNSTON PACIFIC COMMERCIAL REAL ESTATE, INC.

- **Total Unit SF:** 3,000sf.
- 400 sf. **Office**
- 2,600 sf. **Warehouse**
- 500 sf. **Mezzanine** Area At No Extra Charge
- Reception and 1 Private Office
- 1 Ground Level Loading Doors
- 17' Warehouse Clearance
- 200 Amps
- 6 Parking Stalls
- Offered At: \$2.10/sf Gross Per Month



WWW.JOHNSTON-PACIFIC.COM  
949-366-2020

**Rob Johnston**  
Rob@Johnston-Pacific.com  
License# 01121630

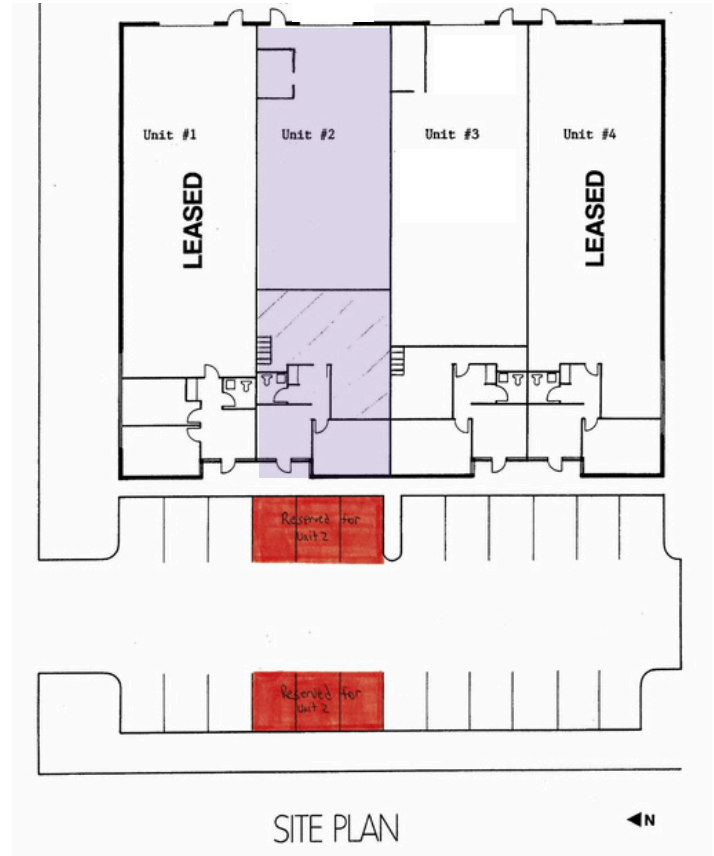
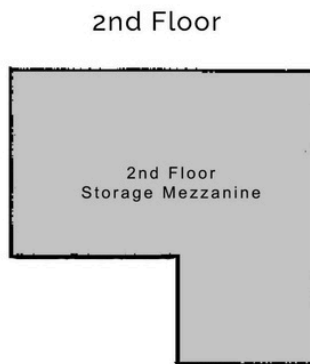
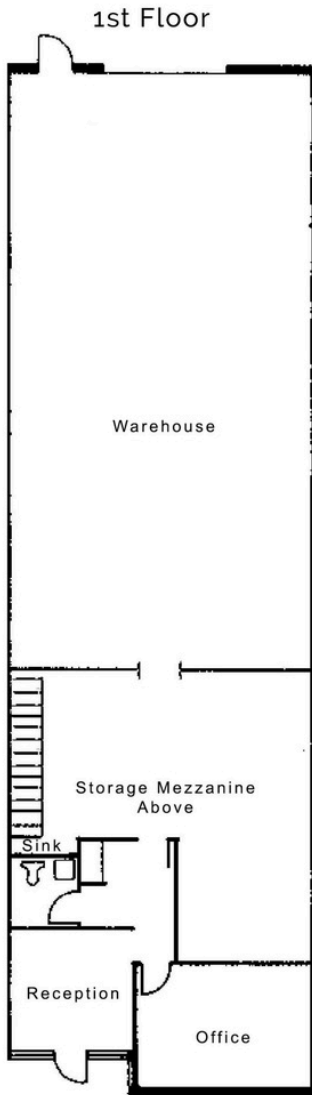
**Louis Johnston**  
Louis@Johnston-Pacific.com  
License# 02054162



The information obtained above has been obtained from sources believed to be reliable. While we do not doubt its accuracy, we have not verified it, make no guarantee, warranty or representation about it. It is your responsibility to independently confirm its accuracy and completeness. All information is subject to change without notice.

# 3,000 SQ FT OFFICE/WAREHOUSE UNIT

**FOR LEASE**  
1027 Calle Trepadora #2  
San Clemente



WWW.JOHNSTON-PACIFIC.COM  
**949-366-2020**



**JOHNSTON PACIFIC**  
COMMERCIAL REAL ESTATE, INC.

**ROB JOHNSTON,**  
Lic# 01121630  
Rob@Johnston-Pacific.com

**LOUIS JOHNSTON,**  
Lic# 02054162  
Louis@Johnston-Pacific.com



The information above had been obtained from sources believed to be reliable. While we do not doubt its accuracy, we have not verified it, make no guarantee, warranty or representation about it. It is your responsibility to independently confirm its accuracy and completeness. All information is subject to change without notice.