



64  
WEST  
48



| <b>FLOOR</b>  | <b>SIZE</b> | <b>ASKING</b> | <b>POSESSION</b> | <b>TERM</b> |
|---------------|-------------|---------------|------------------|-------------|
| Suite 805/807 | 2,205 RSF   | \$55.00/RSF   | Immediate        | Negotiable  |

### **OPPORTUNITY HIGHLIGHTS:**

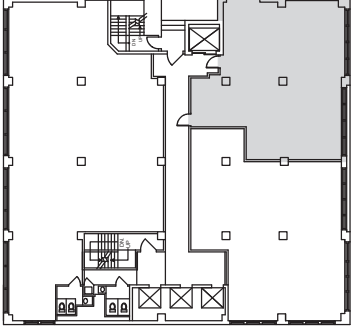
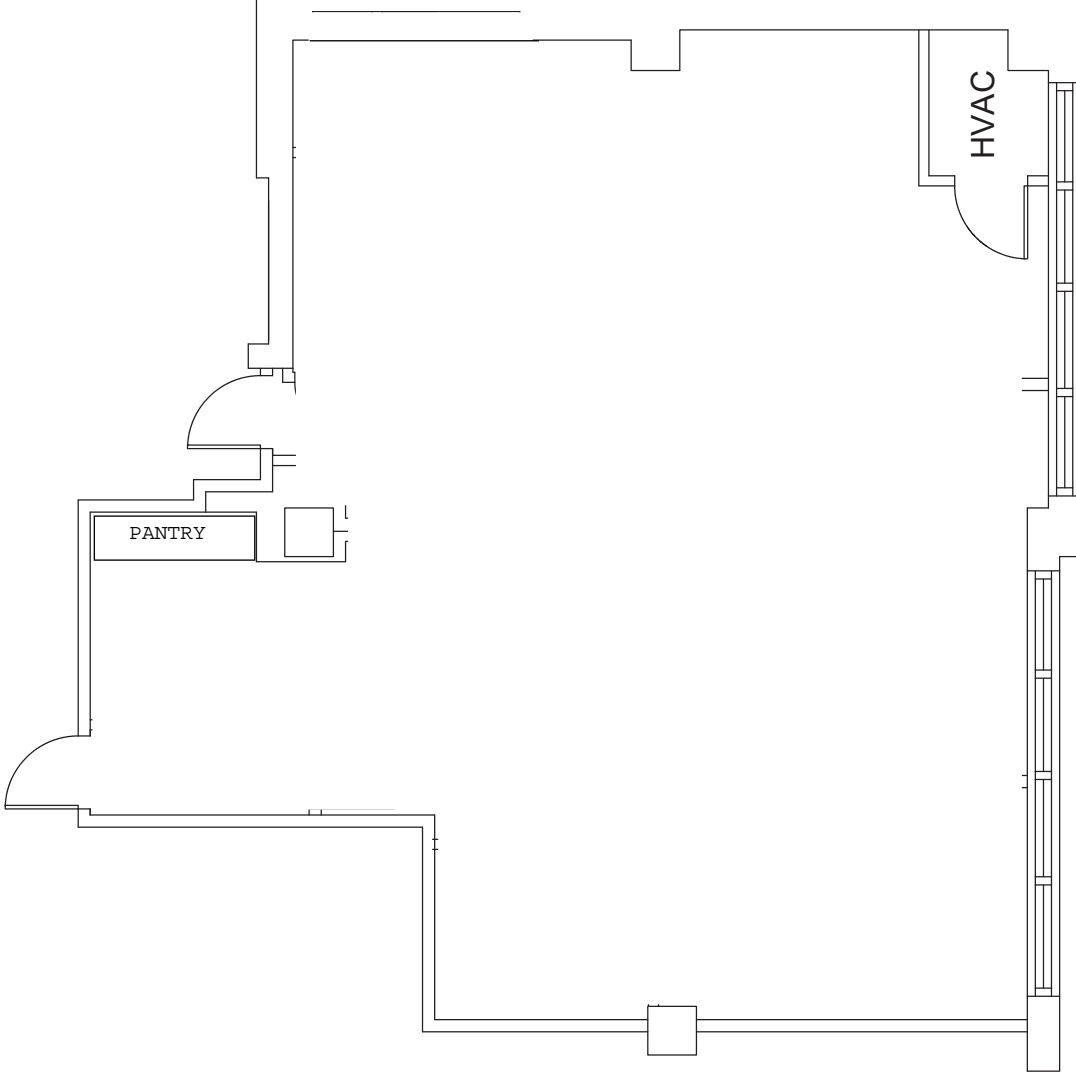
- ✓ Suitable for offices, showrooms, jewelry, education or medical
- ✓ Tenant-controlled air conditioning
- ✓ Attended Lobby
- ✓ Close proximity to subway and Grand Central

**MUSS**DEVELOPMENT LLC

BUILDING NEW YORK CITY SINCE 1906

CONTACT:

Ross Spitalnick  
Senior Vice President  
(718) 263-3800 x 371  
ross@muss.com



**KEY PLAN: NOT TO SCALE**

**Suite 805/807**  
**2,205 RSF**

All areas and dimensions are approximate. Field verification is necessary.

**64 West 48th Street**  
**New York, NY 10036**

**8th Floor**

**MUSS DEVELOPMENT LLC**  
 BUILDING NEW YORK CITY SINCE 1906

