

PROMO RATE ! - \$1.00 / SF / MONTH FULL SERVICE FOR THE FIRST YEAR.
AS-IS, SUBJECT TO TERM, CREDIT AND TENANT IMPROVEMENTS."



FOR LEASE



**10640
MATHER BLVD.**

Mather, CA 95665

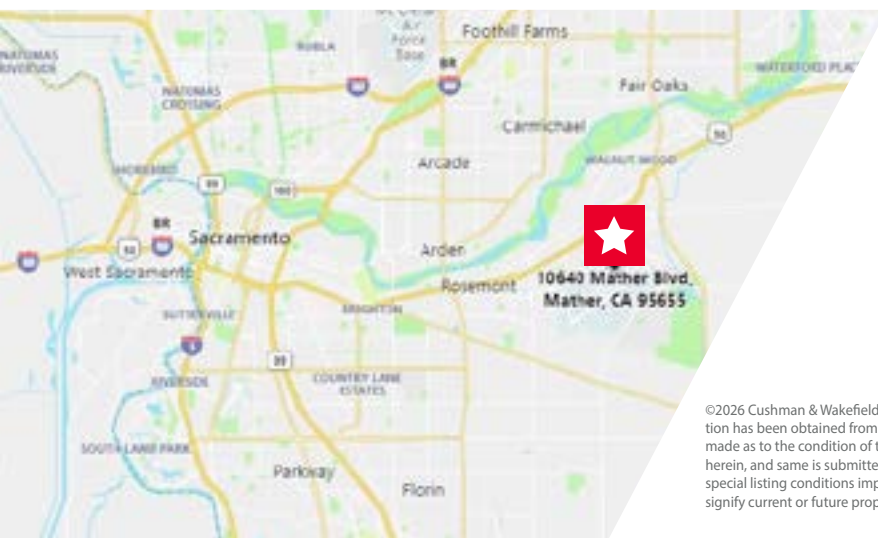
SUITE 130: ±3,808 SF

PROPERTY HIGHLIGHTS

Modern Office Space for lease in the Highway 50 Corridor Submarket.

Class A finishes that include an updated lobby, common area bathroom and showers, window lines with natural light and beautiful landscaping.

Abundant Parking | 3.67/1,000 SF



CHRIS SCHWARZE

Executive Director
+1 916 288 4803

chris.schwarze@cushwake.com
LIC #01291261

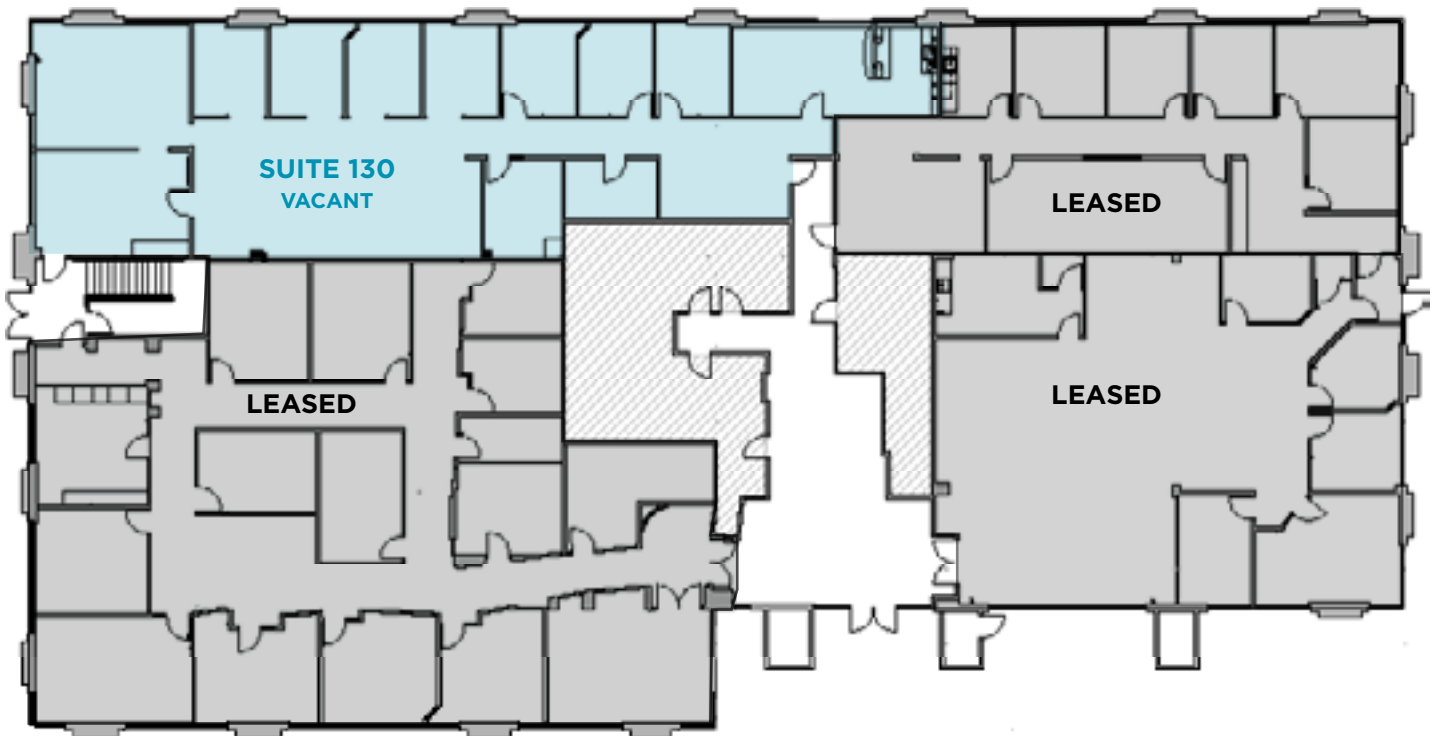
400 Capitol Mall, Suite 1800 | Sacramento, CA
Main +1 916 288 4800 | Fax +1 916 446 0024
cushmanwakefield.com

©2026 Cushman & Wakefield. All rights reserved. The information contained in this communication is strictly confidential. This information has been obtained from sources believed to be reliable but has not been verified. No warranty or representation, express or implied, is made as to the condition of the property (or properties) referenced herein or as to the accuracy or completeness of the information contained herein, and same is submitted subject to errors, omissions, change of price, rental or other conditions, withdrawal without notice, and to any special listing conditions imposed by the property owner(s). Any projections, opinions or estimates are subject to uncertainty and do not signify current or future property performance.

10640 MATHER BLVD.

Mather, CA 95665

SUITE 130 | ±3,808 RSF



CHRIS SCHWARZE
Executive Director
+1 916 288 4803
chris.schwarze@cushwake.com
LIC #01291261

400 Capitol Mall, Suite 1800
Sacramento, CA
Main +1 916 288 4800
Fax +1 916 446 0024
cushmanwakefield.com



10640 MATHER BLVD.

Mather, CA 95665

PROPERTY PHOTOS



CHRIS SCHWARZE
Executive Director
+1 916 288 4803
chris.schwarze@cushwake.com
LIC #01291261

400 Capitol Mall, Suite 1800
Sacramento, CA
Main +1 916 288 4800
Fax +1 916 446 0024
cushmanwakefield.com

10640 MATHER BLVD.

Mather, CA 95665

AERIAL



**SHOPPING CENTER
3101 ZINFANDEL DR.**

- SALA THAI
- SOHO SUSHI
- BANK OF AMERICA

**ROCKINGHAM
PLAZA**

- LA BOU
- FUSION
- SANDWICH SPOT
- SUBWAY
- BURGER STATION
- LITTLE BISTRO THAI

**BDX AT CAPITAL
VILLAGE**

- STARBUCKS
- WINGSTOP
- CHILI'S
- NOODLES & COMPANY
- THE HABIT BURGER GRILL
- PANERA BREAD
- LOWES
- SUBWAY
- RUBIO'S COASTAL GRILL
- POKE CUBE
- ANYTIME FITNESS
- MIMOSA HOUSE

AMENITIES

MATHER AIRPORT	MATHER SPORTS COMPLEX
----------------	-----------------------

MEDICAL CENTERS

SACRAMENTO VA MEDICAL CENTER	MATHER HOSPITAL
SUTTER HEALTH	BLOODSOURCE

CHRIS SCHWARZE
Executive Director
+1 916 288 4803
chris.schwarze@cushwake.com
LIC #01291261

400 Capitol Mall, Suite 1800
Sacramento, CA
Main +1 916 288 4800
Fax +1 916 446 0024
cushmanwakefield.com