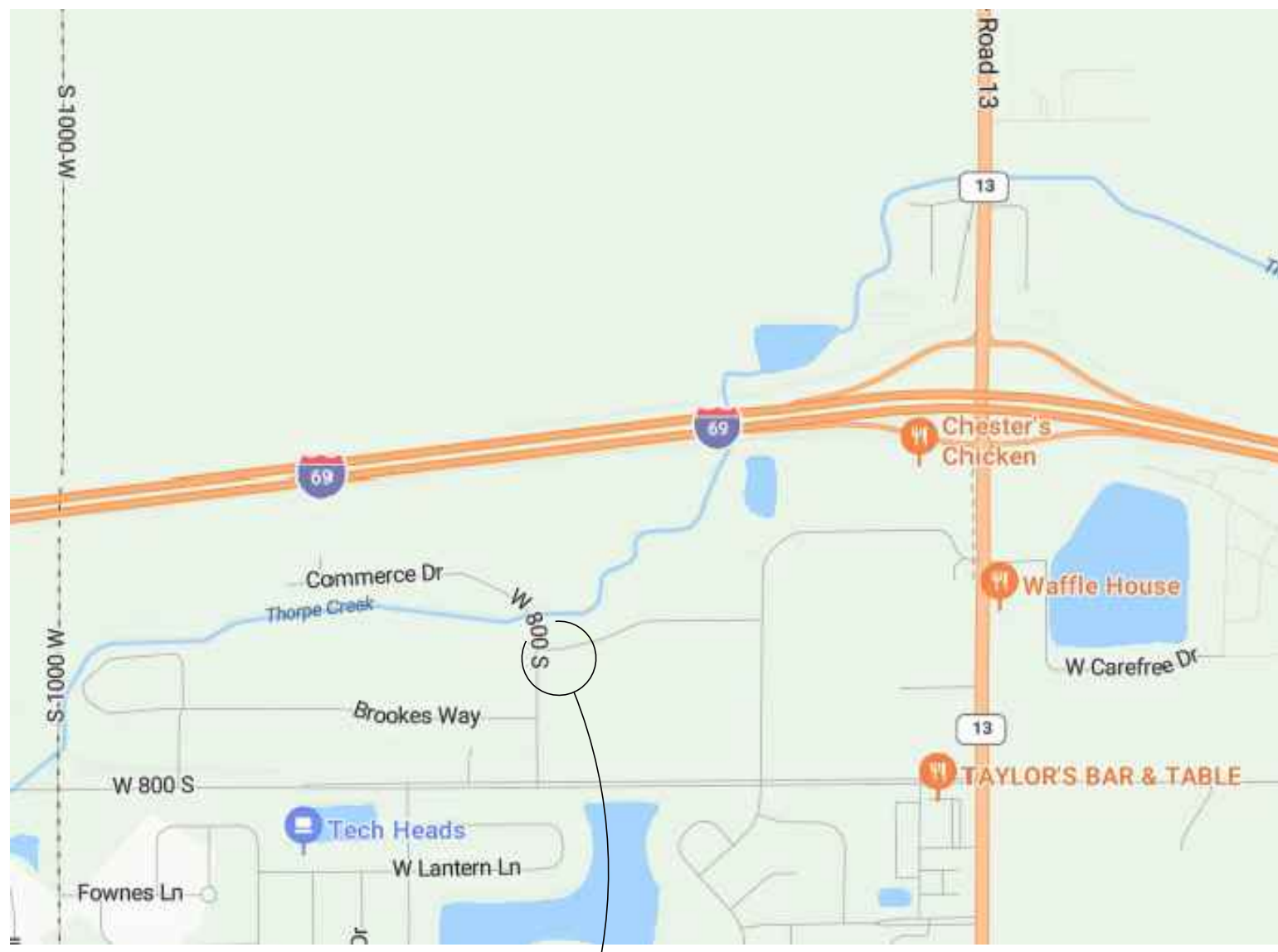
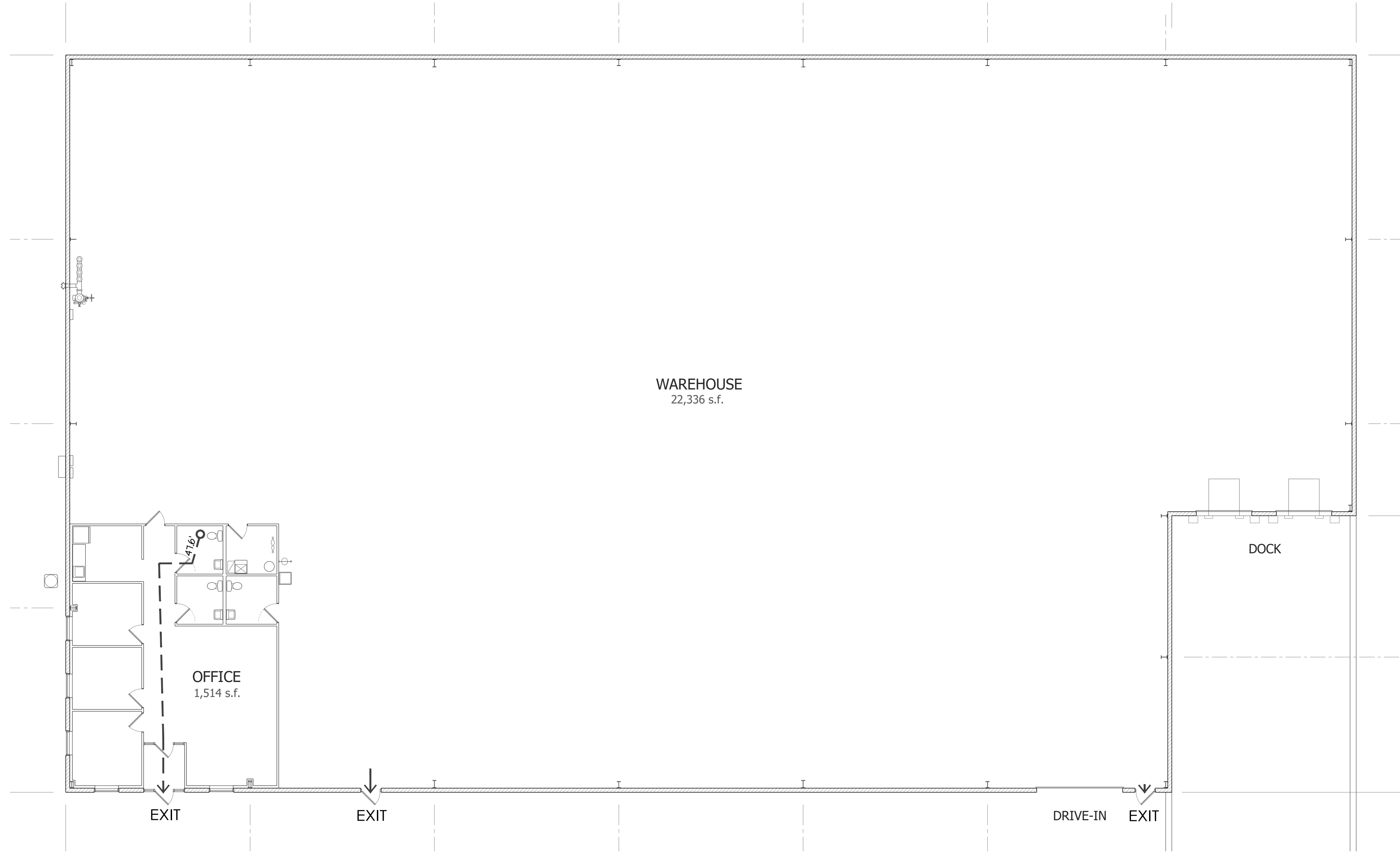


PROPOSED NEW BUILDING
INGALLS - BUILDING 1
 INGALLS COMMERCE PARK - VERSION 2 (LOT 3R-1)
 XXXX COMMERCE DRIVE PENDLETON, INDIANA 46064



VICINITY MAP
N.T.S.



BUILDING ANALYSIS	
GROUND SNOW LOAD	20 psf
WIND SPEED	115 mph
WIND EXPOSURE FACTOR	B
SEISMIC DESIGN CATEGORY	B
ROOF SNOW LOAD (SLOPED)	14.0 psf
ROOF LIVE LOAD	20.00 psf
ROOF COLLATERAL LOAD	10.00 psf

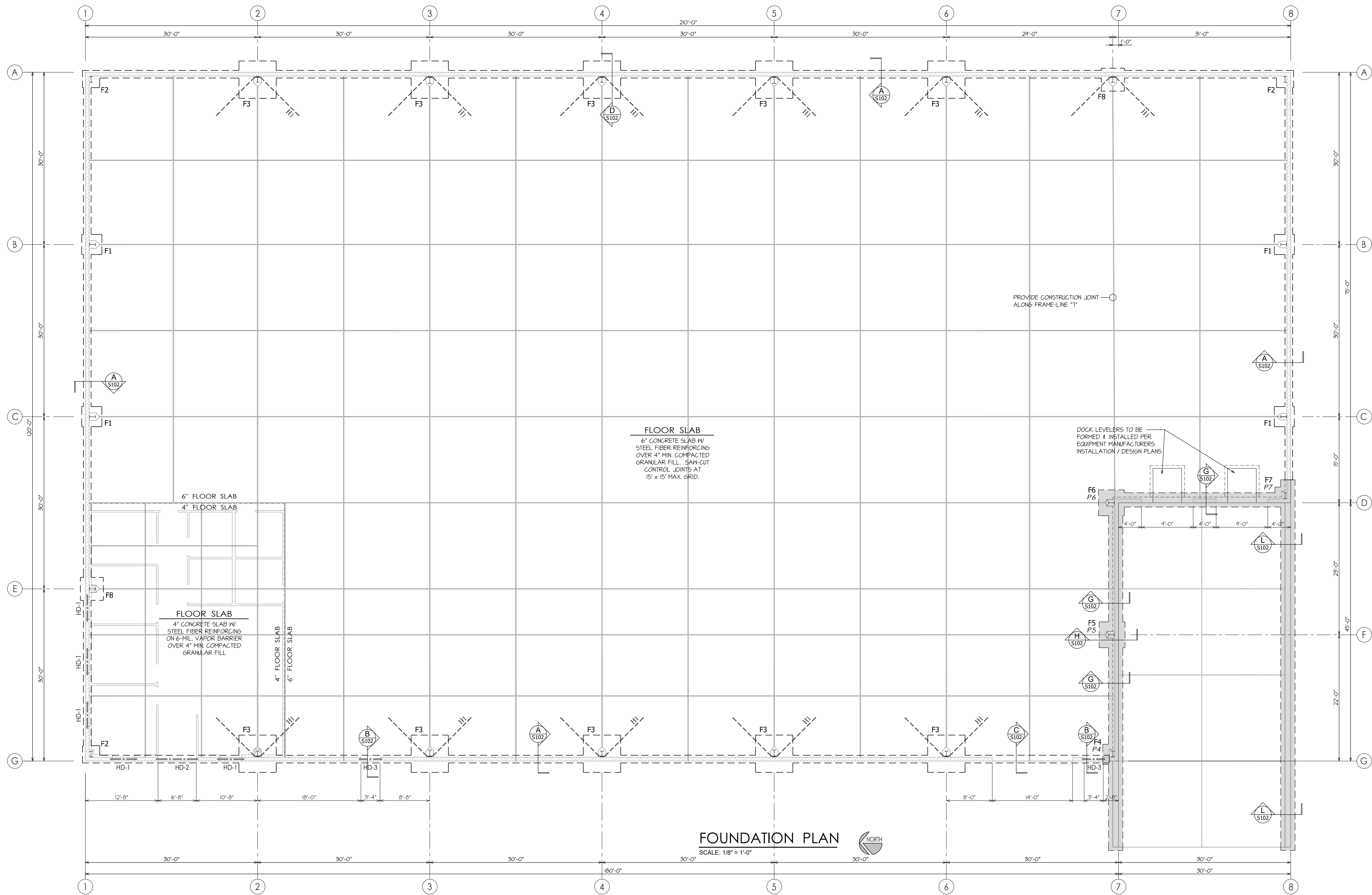
BUILDING ANALYSIS	
OCCUPANCY CLASSIFICATIONS:	
IBC, SECTION 304 BUSINESS - OFFICE	B
IBC, SECTION 311 STORAGE - WAREHOUSE	S-1
CONSTRUCTION CLASSIFICATION: II-B	
AREA	
OFFICE	1,514 s.f.
WAREHOUSE	22,336 s.f.
TOTAL AREA	23,850 s.f.
OCCUPANT LOAD CALCULATED PER "IBC," TABLE 1004.1.1	
OFFICE	1,514 s.f. ÷ 100 = 16
WAREHOUSE	22,336 s.f. ÷ 500 = 45
TOTAL CALCULATED OCCUPANCY	61
MEANS OF EGRESS CALCULATED PER "IBC," TABLE 1005.1	
OFFICE	16 x 0.15 = 2.4"
WAREHOUSE	45 x 0.15 = 6.8"

CODE COMPLIANCE		
SPRINKLER REQUIREMENTS: BUILDING IS FULLY SPRINKLED		
	ALLOWED	PROVIDED
AREA	52,500 s.f.	20,320 s.f.
HEIGHT	4 story	1 story
OFFICE : NUMBER OF EXITS	1 minimum	1
OFFICE : EXIT WIDTH	2.4"	36"
OFFICE : TRAVEL DISTANCE	300'	47.6' max.
WAREHOUSE : NUMBER OF EXITS	2 minimum	2
WAREHOUSE : EXIT WIDTH	6.8"	72"
WAREHOUSE : TRAVEL DISTANCE	250'	133.6' max.

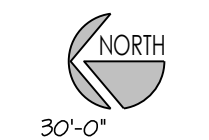
APPLICABLE CODES	
CODES	REFERENCE
2014 INDIANA BUILDING CODE	2012 INTERNATIONAL BUILDING CODE
INDIANA FIRE CODE, 2014 EDITION	2012 INTERNATIONAL FIRE CODE
2010 INDIANA ENERGY CONSERVATION CODE	2007 ASHRAE 90.1 ENERGY CODE
2012 INDIANA PLUMBING CODE	2006 INTERNATIONAL PLUMBING CODE
2014 INDIANA MECHANICAL CODE	2012 INTERNATIONAL MECHANICAL CODE
2014 INDIANA FUEL GAS CODE	2012 INTERNATIONAL FUEL GAS CODE
INDIANA ELECTRICAL CODE, 2009 EDITION	2008 NATIONAL ELECTRICAL CODE
INDIANA ACCESSIBILITY CODE, 2009 EDITION	2012 IBC, CHAPTER 11 : 2009 ANSI A117.1
REFER TO THE "INDIANA AMENDMENTS" FOR ADDITIONAL CODE REQUIREMENTS FOR ALL CODES.	

DRAWING INDEX	
T100	Title Page & Life Safety Plan
S101	Foundation Plan
S102	Foundation Details
A101	Building Floor Plan
A102	Office Floor Plan & Details
A201	Exterior Elevations
A301	Wall Section & Schedules
P101	Plumbing Plans & Schedules
M101	Mechanical Plans & Schedules
E101	Electrical Plans & Schedules

	ISSUE		
DATE	2-10-25	FINAL DESIGN & APPROVAL	
KEELER-WEBB ASSOCIATES <i>Consulting Engineers - Planners - Surveyors</i> 			
486 GRADE DRIVE CARMEL, INDIANA 46032 PHONE (317) 574-0140 FAX (317) 574-1269 www.systemsbuilders.com			
9150 HARRISON PARK COURT SUITE A INDIANAPOLIS, IN 46216			
SDI SYSTEMS BUILDERS INCORPORATED			
PROJECT No. 2501-008 DRAWN BY: GSH CHECKED BY: JPM SHEET No.			
T100			



FOUNDATION PLAN
SCALE: 1/8" = 1'-0"



FOOTING SCHEDULE								
MARK	SIZE	DEPTH	REINFORCING	MARK	SIZE	DEPTH	REINFORCING	NOTES
F1	3'-6" x 3'-6"	32"	(4) #4 BARS x 3'-0" @ 10' O.C. E/W	F6	4'-6" x 4'-6"	14"	(5) #4 BARS x 4'-0" @ 10' O.C. E/W	FOOTING SIZES ARE BASED ON PRELIMINARY BUILDING REACTIONS. FOOTINGS SHALL NOT BE PLACED UNTIL RECEIPT OF FINAL CERTIFIED REACTIONS AND THIS DRAWING IS DATED FOR CONSTRUCTION.
F2	3'-0" x 3'-0"	32"	(3) #4 BARS x 2'-6" @ 10' O.C. E/W	P6	12 1/2" x 14"	54"	(4) BENT #6 BARS x 6'-8" (5) #3 TIES, 10' x 15' @ 12" O.C.	
F3	7'-6" x 7'-6"	32"	(8) #5 BARS x 7'-0" @ 10' O.C. E/W	F7	3'-6" x 3'-6"	14"	(4) #4 BARS x 3'-0" @ 10' O.C. E/W	COLUMN FOOTINGS SHALL BE CENTERED BENEATH COLUMN BASE PLATES UNLESS OTHERWISE INDICATED. CONTRACTOR TO UTILIZE BUILDING MFG. DRAWINGS FOR EXACT LOCATIONS OF FOOTING AND ANCHOR BOLTS.
F4	3'-6" x 3'-6"	14"	(4) #4 BARS x 3'-0" @ 10' O.C. E/W	P7	7" x 12 1/2"	54"	(4) BENT #6 BARS x 6'-8" (5) #3 TIES, 10' x 15' @ 12" O.C.	
P4	7 1/2" x 24 1/2"	54"	(4) BENT #6 BARS x 6'-8" (5) #3 TIES, 10' x 15' @ 12" O.C.	F8	4'-0" x 4'-0"	32"	(5) #4 BARS x 4'-0" @ 4' O.C. E/W	PIER SIZES ARE IN ADDITION TO FOUNDATION WALL WIDTH. PART OF PIER REINFORCING WILL BE WITHIN FOUNDATION WALL.
F5	4'-6" x 4'-6"	14"	(5) #4 BARS x 4'-0" @ 10' O.C. E/W	F9	NOT USED			
P5	12 1/2" x 14"	54"	(4) BENT #6 BARS x 6'-8" (5) #3 TIES, 10' x 15' @ 12" O.C.	F10	NOT USED			

• COLUMN FOOTING REINFORCING IS IN ADDITION TO GRADE-BEAM AND WALL FOOTING REINFORCING. WALL AND FOOTING REINFORCING SHALL RUN CONTINUOUS THROUGH COLUMN FOOTINGS AND PIERS.

DATE	ISSUE
8-27-24	PRELIM. REVIEW & APPROVAL
1-16-25	REVIEW
2-10-25	FINAL DESIGN & APPROVAL

KEELER-WEBB ASSOCIATES
Consulting Engineers - Planners - Surveyors
486 GRADE DRIVE
CARMEL, INDIANA 46032
PHONE (317) 574-0140
FAX (317) 574-1269

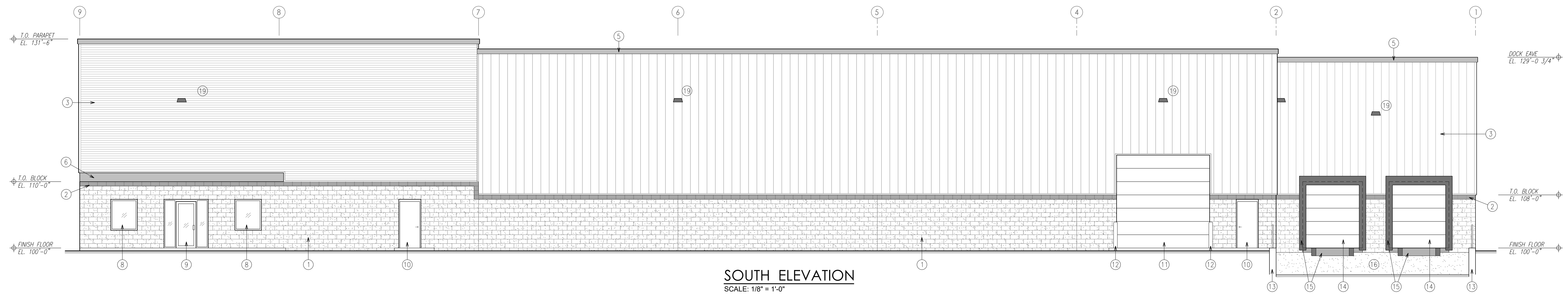
9150 HARRISON PARK COURT SUITE A
INDIANAPOLIS, IN 46216
PH. 317-546-8000
FX. 317-546-8300
www.systemsbuilders.com

SBL SYSTEMS BUILDERS
INCORPORATED

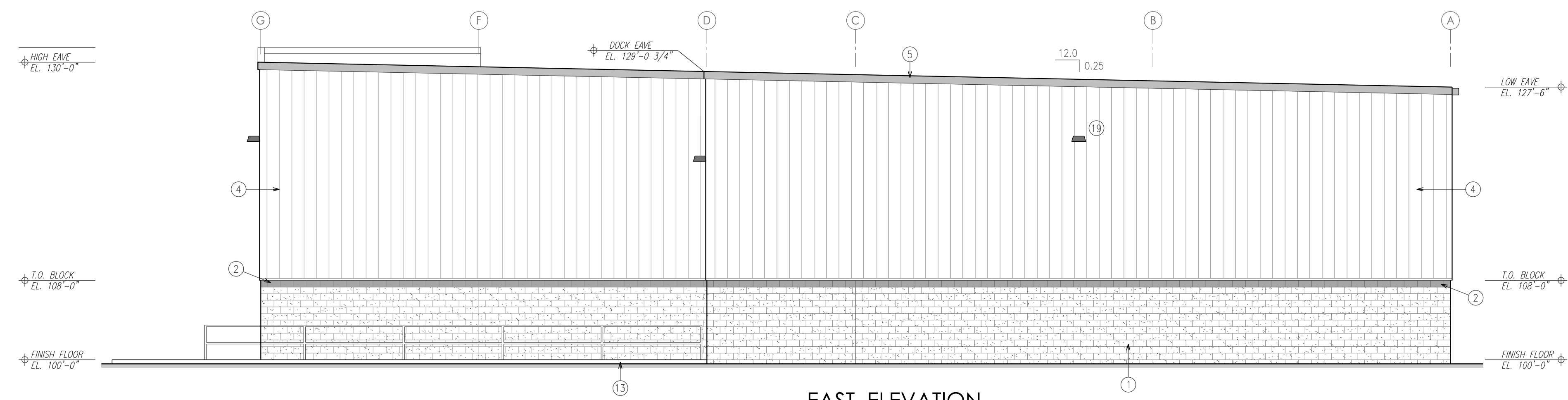
PROPOSED NEW BUILDING
INGALLS - BUILDING 1
INGALLS COMMERCE PARK - VERSION 2 (LOT 3R-1)
XXXX COMMERCE DRIVE
PENDLETON, INDIANA 46064

PROJECT No. 2501-008
DRAWN BY: GSH
CHECKED BY: JPM
SHEET No.

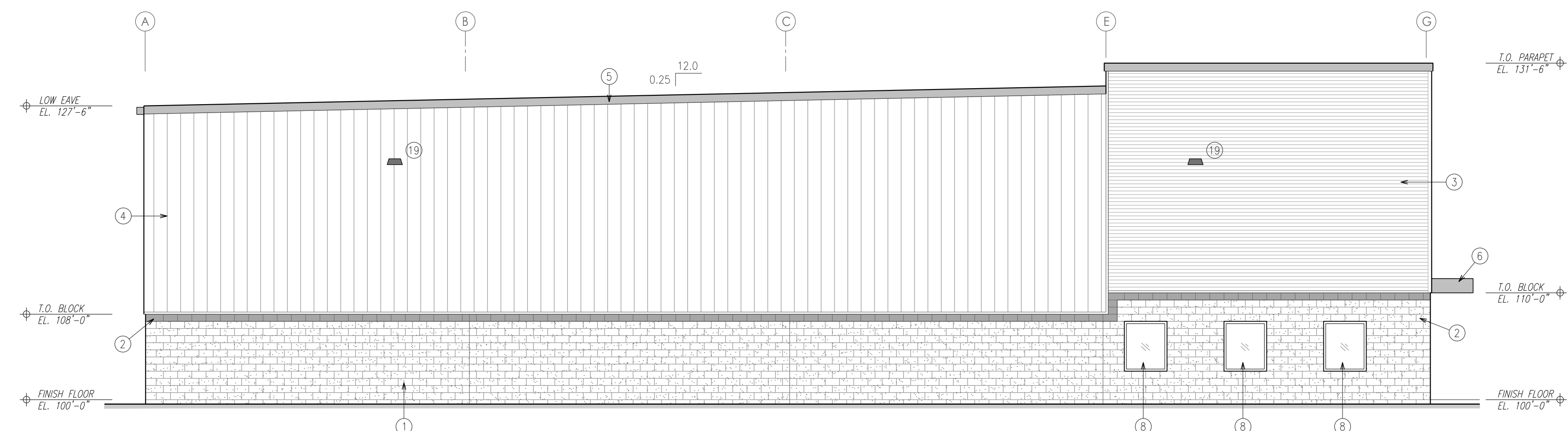
S101



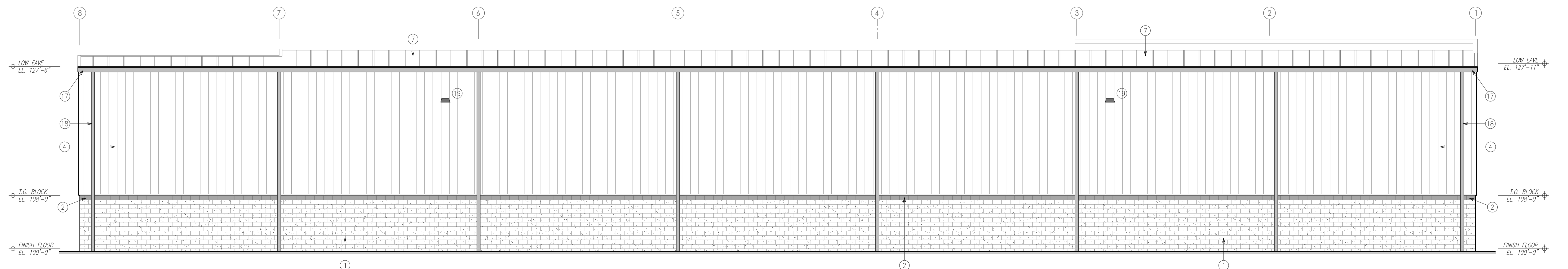
SOUTH ELEVATION
SCALE: 1/8" = 1'-0"



EAST ELEVATION
SCALE: 1/8" = 1'-0"



WEST ELEVATION
SCALE: 1/8" = 1'-0"



NORTH ELEVATION
SCALE: 1/8" = 1'-0"

KEYED NOTES

- ① 8-SPLIT-FACE MASONRY BLOCK
 - ② 1-COURSE STANDARD MASONRY BLOCK (BAND)
 - ③ ARCHITECTURAL HORIZONTAL / VERTICAL WALL PANEL
 - ④ VEE-RIB METAL SIDING BY BUILDING MFG.
 - ⑤ METAL COPING / TRIM BY BUILDING MFG.
 - ⑥ 3'-0" x 4'-0" CANOPY BY BUILDING MFG.
 - ⑦ STANDING-BEAM METAL ROOF BY BUILDING MFG.
 - ⑧ 4' x 4'-8" WINDOW
 - ⑨ 6'-8" x 7'-4" STOREFRONT ENTRY
 - ⑩ 3' x 1' MANDOOK
 - ⑪ 14' x 14' OVERHEAD DOOR
 - ⑫ PIPE BOLLARD
 - ⑬ CONCRETE RETAINING WALL W/ 42" HIGH GUARDRAIL
 - ⑭ 9' x 10' DOCK DOOR
 - ⑮ DOCK BUMPERS + SEALS
 - ⑯ 28' WIDE RECESSED TRUCK DOCK
 - ⑰ 8" METAL GUTTER
 - ⑱ 5 1/2" x 4 1/2" DOWNSPOUT (TYP. OF 10)
 - ⑲ WALL PACK LIGHT
 - ⑳ NOT USED
 - ㉑ NOT USED
- COLORS TO BE DETERMINED BY OWNER.

DATE	ISSUE
8-27-24	PRELIM. REVIEW & APPROVAL
1-16-25	REVIEW
2-10-25	FINAL DESIGN & APPROVAL

KEELER-WEBB ASSOCIATES
Consulting Engineers-Planners-Surveyors
486 GRADLE DRIVE
CARMEL, INDIANA 46032
PHONE (317) 574-0140
FAX (317) 574-1269

9150 HARRISON PARK COURT
SUITE A
INDIANAPOLIS, IN 46216
PH. 317-546-8000
FX. 317-546-8300
www.systemsbuilders.com



PROPOSED NEW BUILDING
INGALLS - BUILDING 1
INGALLS COMMERCE PARK - VERSION 2 (LOT 3R-1)
XXXX COMMERCE DRIVE
PENDLETON, INDIANA 46064

PROJECT No. 2501-008
DRAWN BY: GSH
CHECKED BY: JPT
SHEET No.

A201