

# 915 F ST NW

Washington, DC 20004

## Office For Lease

1,575 - 1,635 SF



Leasing Information:  
202.513.6700

# Lincoln

<b>Merrill Turnbull</b> 202.513.6713 mturnbull@lpc.com	<b>Adam Biberaj</b> 202.513.6736 abiberaj@lpc.com	<b>Tim Whitebread</b> 202.513.6712 twhitebread@lpc.com	<b>McKay Elliott</b> 202.513.6724 melliott@lpc.com
--	---	--	--

101 Constitution Avenue NW  
Suite 325 East  
Washington, DC 20001

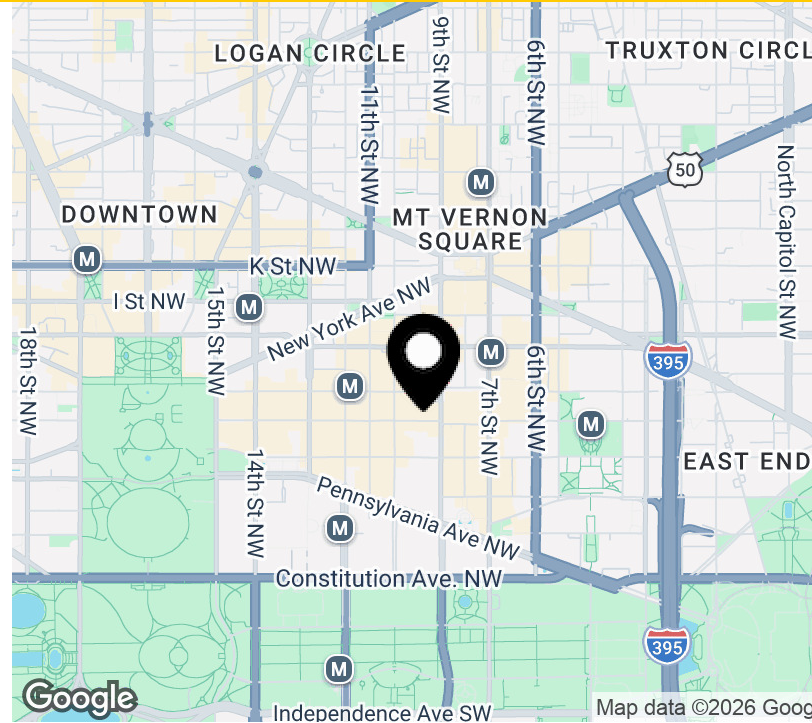
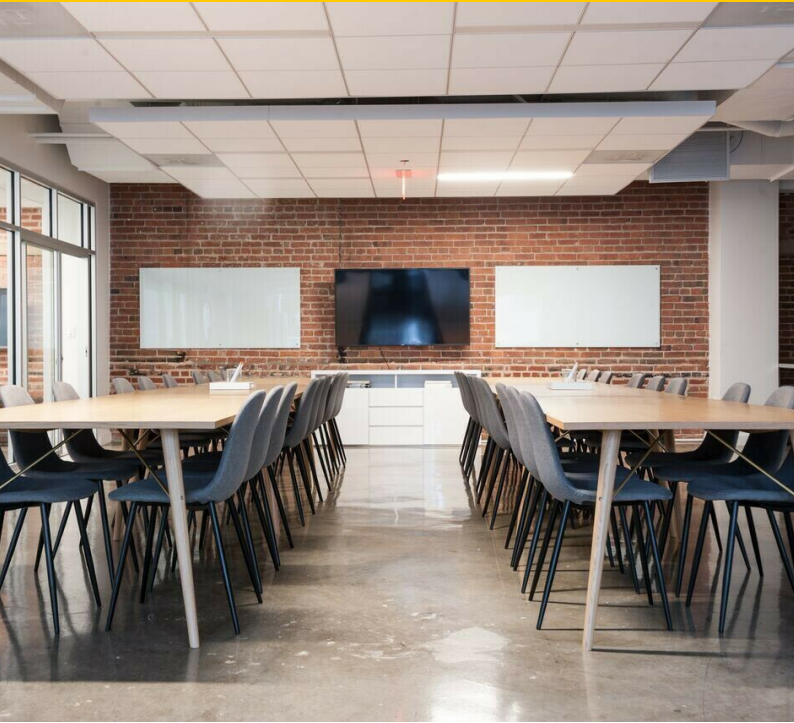
[www.lpc.com](http://www.lpc.com)

# 915 F ST NW

Washington, DC 20004

Office For Lease

1,575 - 1,635 SF



## Property Highlights

- Prime office space available at 915 F Street NW, seamlessly blending historic charm with modern functionality.
- Conveniently located just two blocks from Metro Center, providing access to multiple Metro lines.
- Surrounded by an array of restaurants, retail shops, and cultural attractions, offering unparalleled convenience.
- Situated in the heart of the vibrant Penn Quarter neighborhood, this prestigious address places you in a thriving commercial hub.

## Availabilities

Availabilities	SF	Lease Rate	Date Available
5th Floor	1,576 SF	Negotiable	Immediately
6th Floor	1,635 SF	Negotiable	Immediately
7th Floor	1,575 SF	Negotiable	Immediately

**Merrill Turnbull**

202.513.6713  
mturnbull@lpc.com

**Adam Biberaj**

202.513.6736  
abiberaj@lpc.com

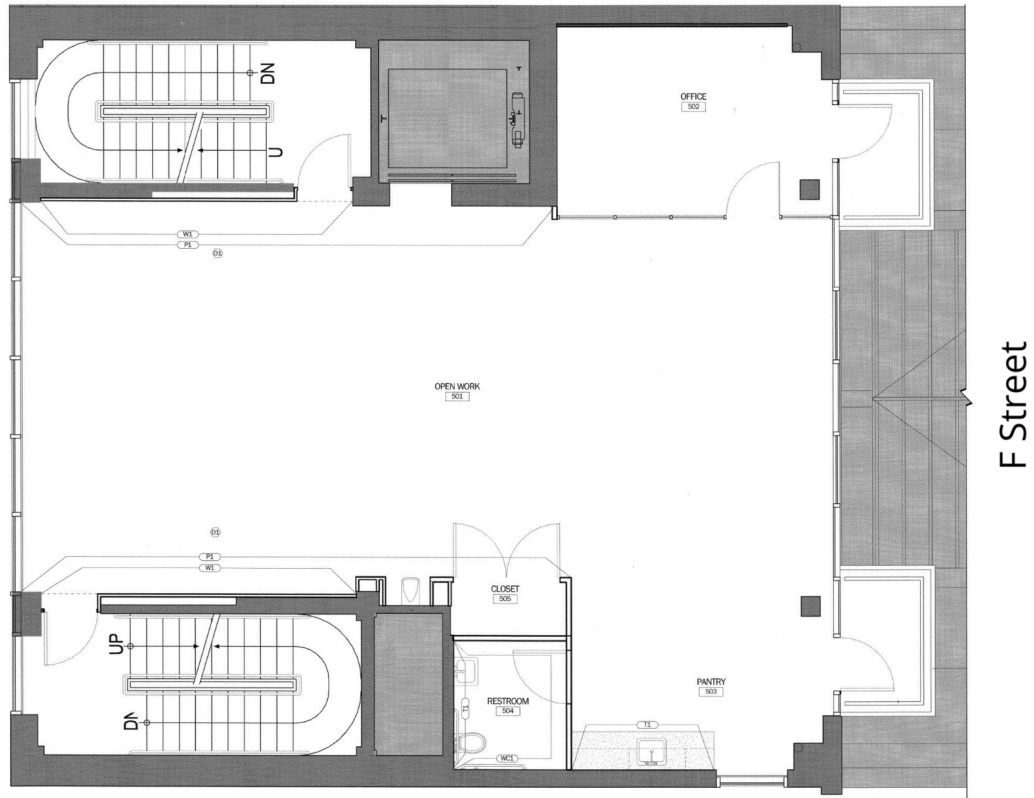
**Tim Whitebread**

202.513.6712  
twhitebread@lpc.com

**McKay Elliott**

202.513.6724  
melliott@lpc.com

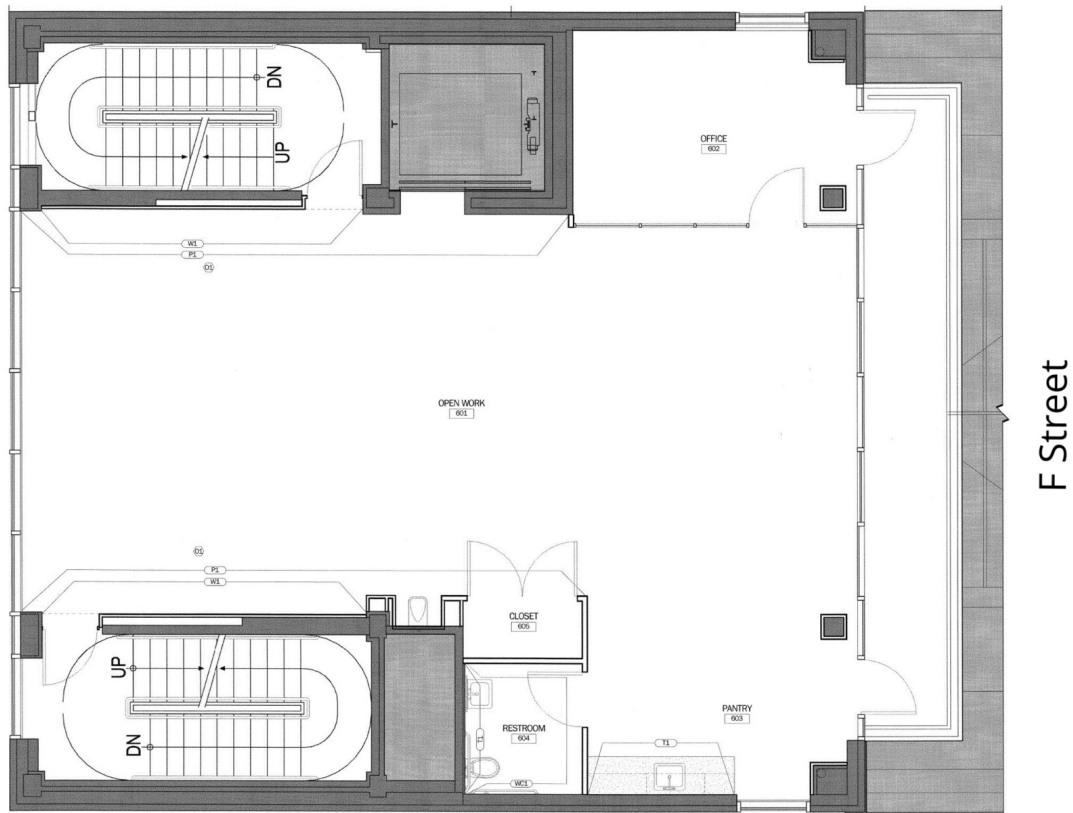
**Lincoln**



Suite	Size	Description
5th Floor	1,576 SF	Ready-to-go suite available immediately.

<b>Merrill Turnbull</b> 202.513.6713 mturnbull@lpc.com	<b>Adam Biberaj</b> 202.513.6736 abiberaj@lpc.com	<b>Tim Whitebread</b> 202.513.6712 twhitebread@lpc.com	<b>McKay Elliott</b> 202.513.6724 melliott@lpc.com
--	---	--	--

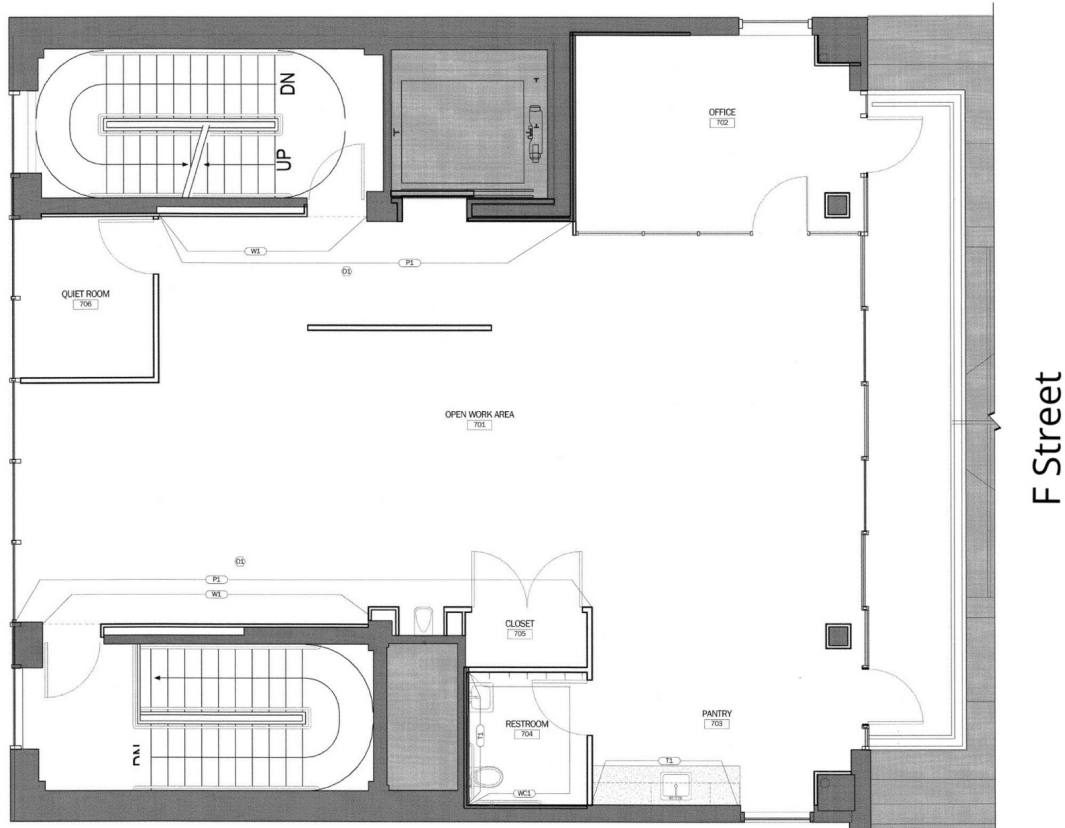
**Lincoln**



Suite	Size	Description
6th Floor	1,635 SF	Ready-to-go suite available immediately.

<b>Merrill Turnbull</b> 202.513.6713 mturnbull@lpc.com	<b>Adam Biberaj</b> 202.513.6736 abiberaj@lpc.com	<b>Tim Whitebread</b> 202.513.6712 twhitebread@lpc.com	<b>McKay Elliott</b> 202.513.6724 melliott@lpc.com
--	---	--	--

**Lincoln**



Suite	Size	Description
7th Floor	1,575 SF	Ready-to-go suite available immediately.

**Merrill Turnbull**   **Adam Biberaj**   **Tim Whitebread**   **McKay Elliott**  
202.513.6713   202.513.6736   202.513.6712   202.513.6724  
mturnbull@lpc.com   abiberaj@lpc.com   twhitebread@lpc.com   mellriott@lpc.com

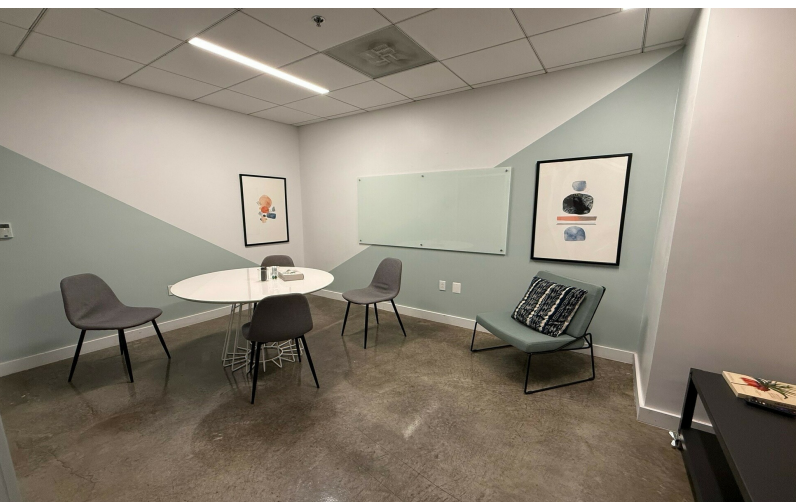
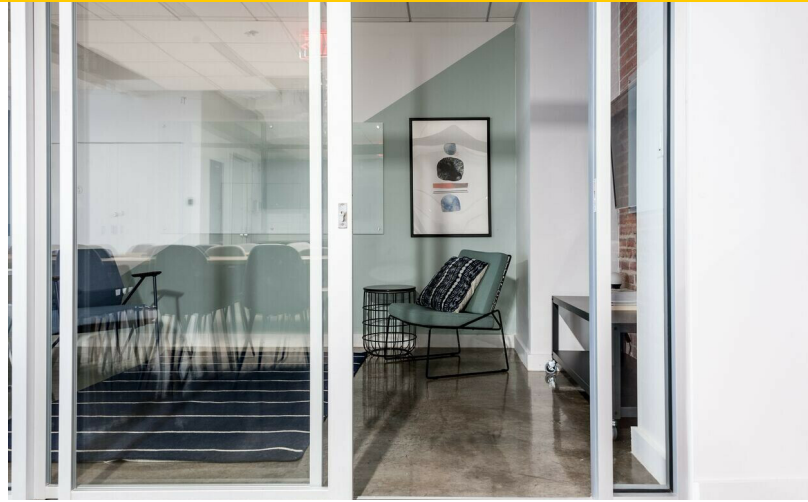


# 915 F ST NW

Washington, DC 20004

Property Photos

1,575 - 1,635 SF



**Merrill Turnbull**

202.513.6713  
mturnbull@lpc.com

**Adam Biberaj**

202.513.6736  
abiberaj@lpc.com

**Tim Whitebread**

202.513.6712  
twhitebread@lpc.com

**McKay Elliott**

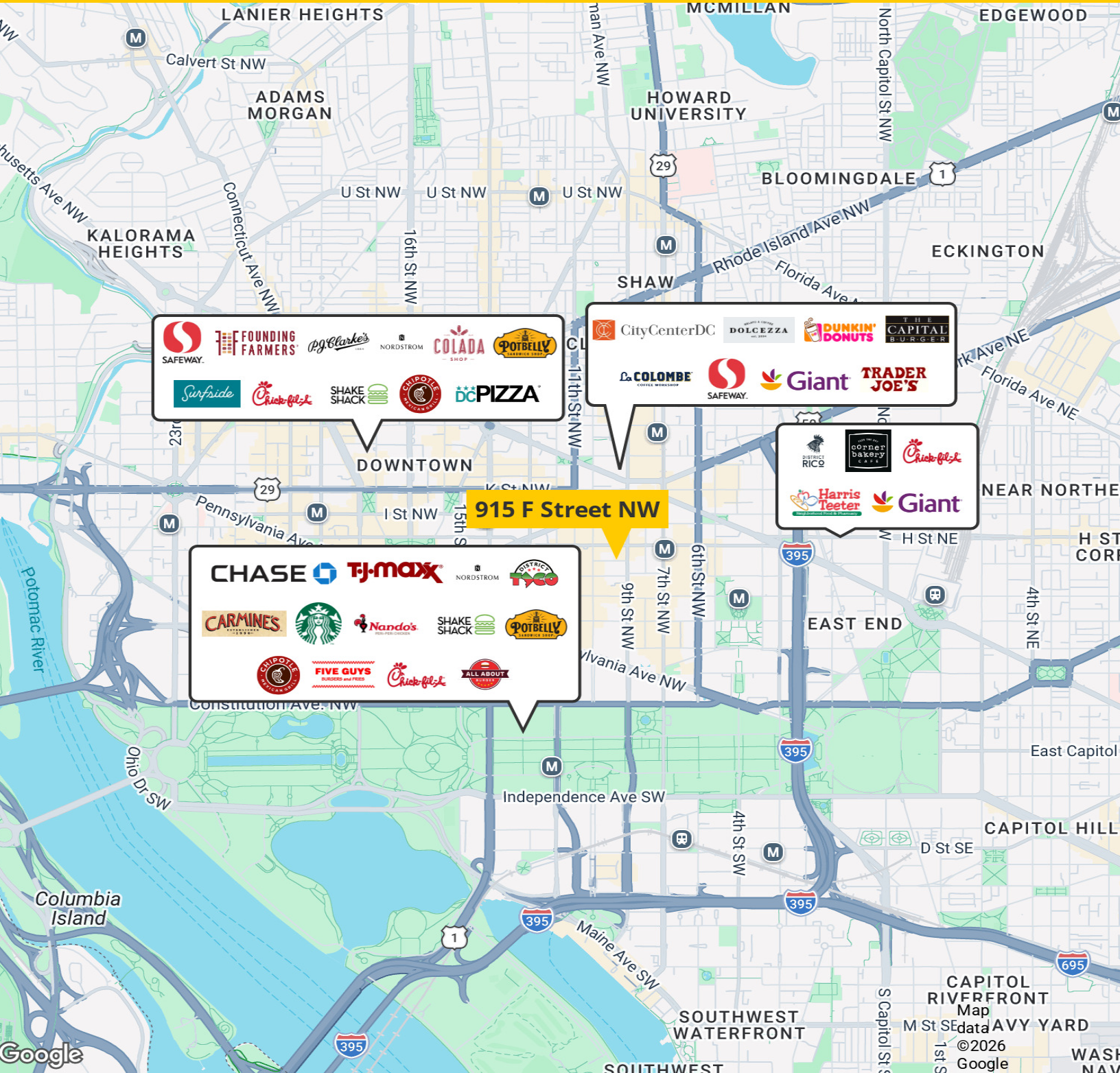
202.513.6724  
melliott@lpc.com

# Lincoln

# 915 F ST NW

Washington, DC 20004

## Location Map



Merrill Turnbull  
202.513.6713  
mturnbull@lpc.com

Adam Biberaj  
202.513.6736  
abiberaj@lpc.com

Tim Whitebread  
202.513.6712  
twhitebread@lpc.com

McKay Elliott  
202.513.6724  
melliott@lpc.com

# Lincoln



# 915 F ST NW

Washington, DC 20004

Leasing Information:  
202.513.6700

**Merrill Turnbull**  
202.513.6713  
mturnbull@lpc.com

**Adam Biberaj**  
202.513.6736  
abiberaj@lpc.com

**Tim Whitebread**  
202.513.6712  
twhitebread@lpc.com

**McKay Elliott**  
202.513.6724  
melliott@lpc.com

## Lincoln

101 Constitution Avenue NW  
Suite 325 East  
Washington, DC 20001

[www.lpc.com](http://www.lpc.com)