

# SYLVERTREE OAKLAND

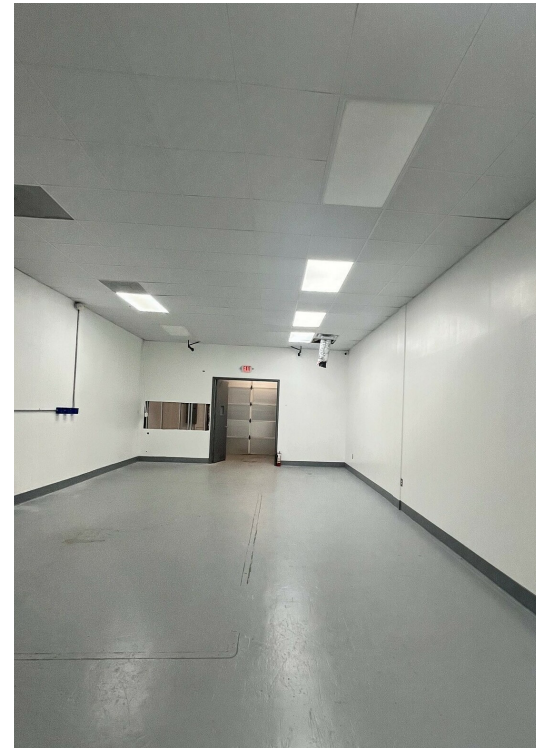
4530-4534, 4749-4799, 4831-4837, 4849 NE 11TH AVE & 1070-1090 NE 48TH CT., OAKLAND PARK, FL 33334

4751 NE 11TH AVE



## SPACE HIGHLIGHTS

- 1,610 SF
- 100% air-conditioned space
- 523 SF office
- 1,087 SF warehouse
- 10' x 10' grade level overhead door
- 11'6" clear ceiling in warehouse
- Upgraded power 200amps breaker
- 4 parking spaces



### HALEY PRESSER

Property Manager / Sales Associate  
Direct: 954.485.9200 | Cell: 954.254.5396  
Haley@levyrai.com

### ANGIE WEAVER

Lauderdale Lakes and Lauderdale Manager  
Direct: 954.485.9200 | Cell: 917.645.2339  
angie@levyrai.com



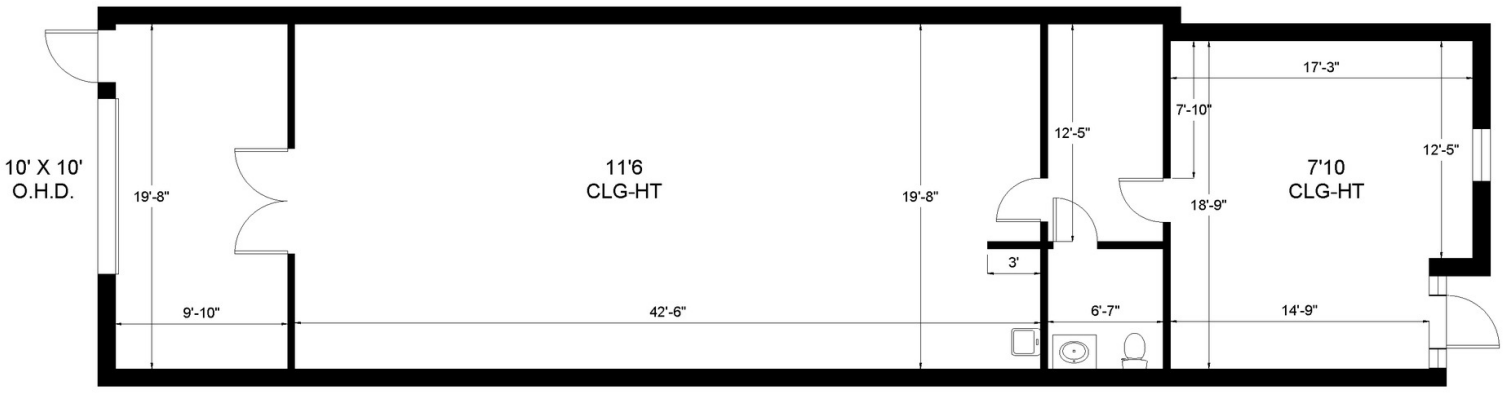
# SYLVERTREE OAKLAND

4530-4534, 4749-4799, 4831-4837, 4849 NE 11TH AVE & 1070-1090 NE 48TH CT., OAKLAND PARK, FL 33334

## 4751 NE 11TH AVE FLOOR PLAN

### SYLVER TREE HOLDINGS, LLC

4751 NE 11th Avenue | Oakland Park, FL 33334



Office - 523 Sq. Ft.  
Warehouse - 1,087 Sq. Ft.

1,610 Rentable Sq. Ft.  
[www.LevyRealtyAdvisors.com](http://www.LevyRealtyAdvisors.com)

**HALEY PRESSER**  
Property Manager / Sales Associate  
Direct: 954.485.9200 | Cell: 954.254.5396  
Haley@levyrai.com

**ANGIE WEAVER**  
Lauderdale Lakes and Lauderhill Manager  
Direct: 954.485.9200 | Cell: 917.645.2339  
angie@levyrai.com

