

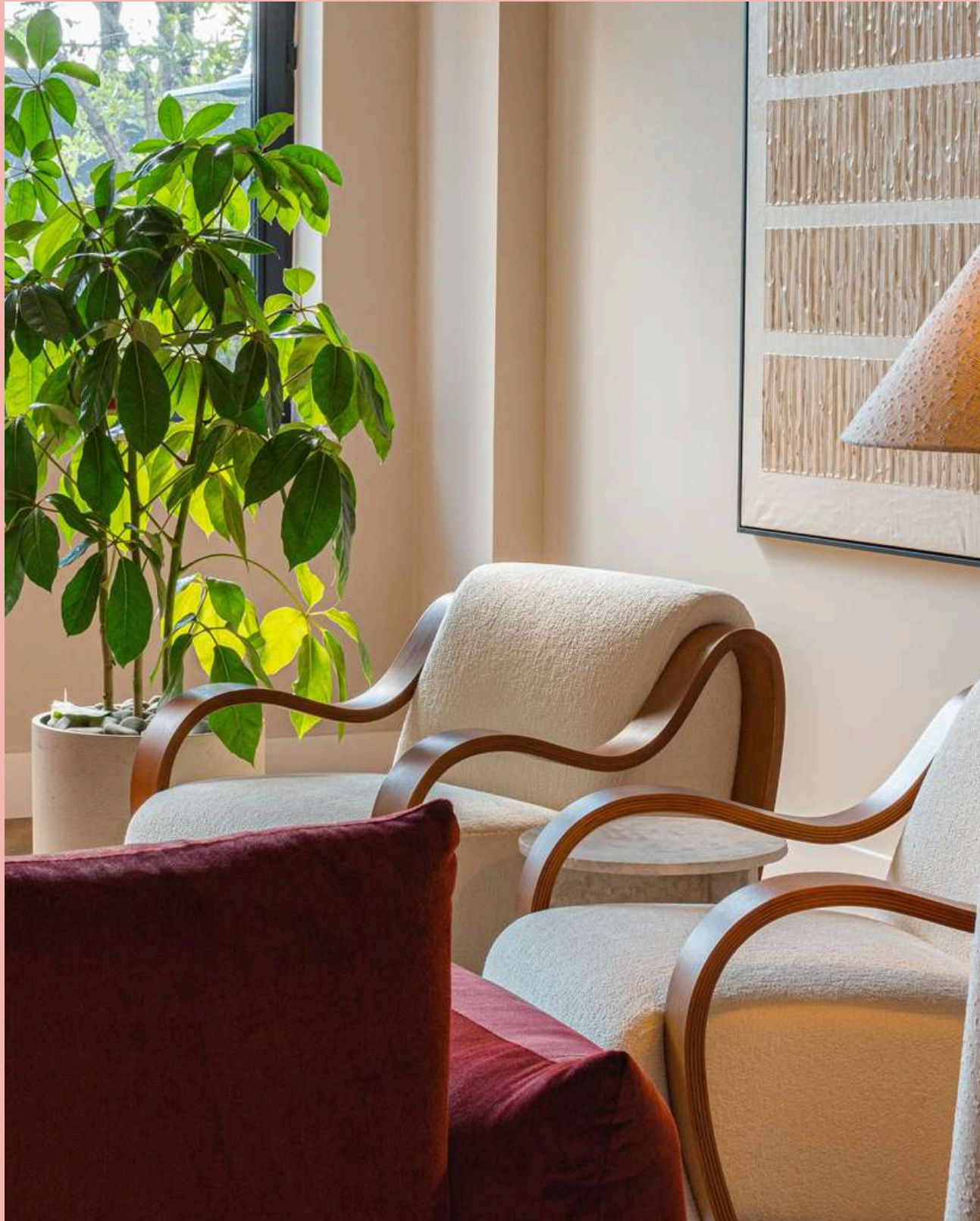
H A L K I N

---



24

EVERSHOLT STREET  
EUSTON, NW1



H A L K I N

W E L C O M E

TO

24

EVERSHOLT STREET

**A historic landmark re-imagined as a modern, flexible workspace. Redefining the standard of quality in Euston.**

Mainframe offers a bold, design-led workspace that sets a new benchmark for working in the capital.

Housed within the iconic former railway headquarters, Mainframe brings together industrial heritage and contemporary design to create a workspace unlike any other.

Whether you need to focus in one of our private booths, collaborate in one of the communal lounges or soak up the outdoors whilst connecting on our roof terrace - Mainframe is designed with productivity and adaptability in mind.

24 EVERS HOLT STREET, NW1 1DB



# WHY CHOOSE HALKIN?

H A L K I N



## FAMILY-RUN FLEXIBLE WORKSPACES THAT NEVER CUT CORNERS ON QUALITY



### FLEXIBILITY

We believe that the future of work is flexible so we offer diverse workspace options and highly-flexible contracts that let you build your own perfect solution.



### QUALITY

We put quality at the centre of everything we do – ultra-premium locations, in-house workspace design, and great attention to detail all create a premium experience



### SERVICE

Our background in hospitality inspires our hands-on approach to service, with a dedicated on-site team there to make sure you have a hassle-free workday.



### HERITAGE

We're a family business with over 100 years of experience in property so we know what makes a good workspace and exactly how to look after our members.

24 EVERSOLT STREET, NW1 1DB

# WHAT'S INCLUDED?

We designed all our workspaces to offer a next-level experience, filling it with cutting-edge facilities and amenities that come in useful every day. All of our members, whether on a coworking membership or in a private serviced office, benefit from:

- Business rates & service charge
- Premium office furniture (desk, chair & pedestal)
- Breakout spaces & kitchen facilities
- 24/7 secure access
- Daily cleaning service
- Tea & coffee provisions
- Staffed reception team
- Superfast Wi-Fi & IT package\*
- Private phone booths
- Showers
- Bike storage
- Communal roof terrace access
- Dog-friendly environment



Mainframe boasts a host of meeting rooms as well as a fully equipped podcast studio, all bookable via our friendly, onsite team

\*with 50Mb/s dedicated bandwidth per client.





# WORKSPACE OPTIONS

24 EVERSOLT STREET OFFERS MORE THAN ONE WAY TO WORK – THERE'S A SOLUTION FOR EVERY TYPE OF BUSINESS.

## SERVICED OFFICES

High-quality spacious private office space available on refreshingly flexible terms.

Fully-serviced, fully-furnished offices available to suit your needs, accommodating any size requirements, all featuring outstanding natural light and complete with limitless support from our on-site team.



## COWORKING

A lightweight coworking solution for freelancers, entrepreneurs, and small teams.

Offers unlimited access to our flexible, comfortable coworking space, including free-flowing hot drinks and super-fast WiFi, without any of the additional features of a full membership.



H A L K I N

24 EVERSOLT STREET, NW1 1DB



## MEMBERSHIPS

**A premium coworking membership package that offers the ultimate flexibility.**

All packages include unlimited hot desk usage, 24/7 access, mail handling and a registered business address. Selected memberships also provide access to all Halkin business lounges and built-in meeting room hours.



## MEETING ROOMS

**High-tech, contemporary meeting rooms available to hire on a flexible basis.**

A selection of meeting rooms to choose from, all equipped with the latest AV tech, inclusive of refreshments, and bookable on an hourly basis by members and non-members alike.



## VIRTUAL OFFICES

**A seamless solution for businesses that need the benefits of an office without the space.**

Take full advantage of our prestigious NW1 address with one of our Virtual Office Membership which includes your registered address as well as mail handling and forwarding

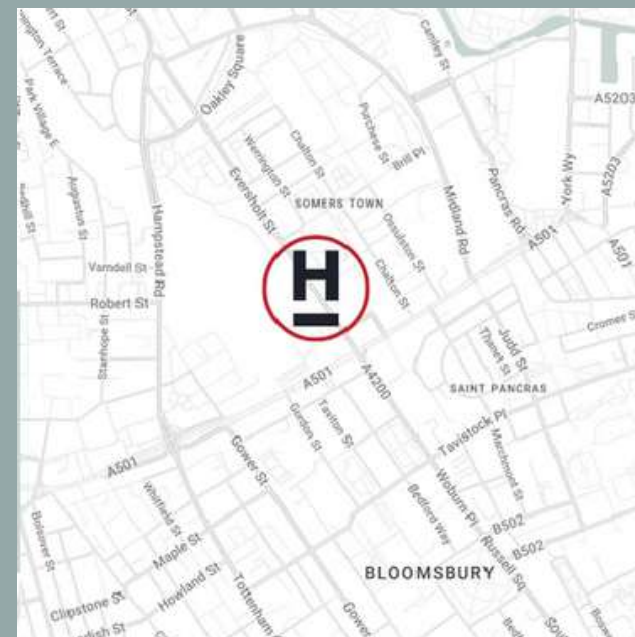




# LOCATION

Strategically located on Eversholt Street, Mainframe is just moments from Euston Station and a short walk from King's Cross St Pancras, offering unparalleled connectivity across London and beyond.

-  **EUSTON**  
< 3 minute walk
-  **EUSTON SQUARE**  
< 3-minute walk
-  **KINGS CROSS ST PANCRAS**  
< 10 minute walk
-  **MORNINGTON CRESCENT**  
< 15 minute walk



-  **LONDON CITY AIRPORT**  
35 minutes
-  **HEATHROW AIRPORT**  
45 minutes
-  **GATWICK AIRPORT**  
45 minutes
-  **LUTON AIRPORT**  
55 minutes

Flexible, iconic and hyper-connected - Mainframe is at the heart of London's Knowledge Quarter and on the doorstep of Euston's evolving transport hub.

# LOCAL AREA GUIDE

Surrounded by some of London's most recognisable locations, including Regent's Park and the vibrant streets of Camden, Euston offers more than just great connections. Alongside the well-known attractions are plenty of local favourites waiting to be discovered...



**ICON**  
British Library

Just a short stroll from our Euston building, the iconic British Library is the perfect spot for a lunchtime escape. Whether you fancy a quiet read, a browse through exhibitions, or simply want to enjoy the impressive architecture and café spaces, it's a great way to break up your day. With free entry and plenty to explore, it's an ideal local gem to make the most of your lunch hour.



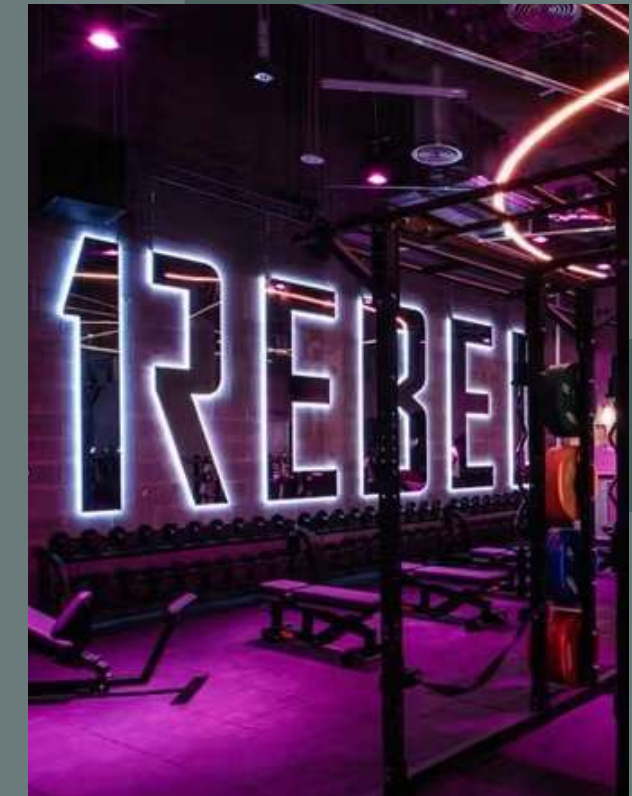
**LUNCH**  
GAIL's Bakery

Right next door to our Euston building, you'll find GAIL's Bakery; the perfect go-to for your morning coffee, fresh pastries, or a quick lunch. With its cosy atmosphere and freshly baked goods, it's a great option to grab something quick without having to venture far from your desk. Ideal for everything from client catch-ups to a solo coffee break.



**DINNER & DRINKS**  
Pizza Pilgrims

Located just steps from our Euston building, Pizza Pilgrims offers fresh, authentic Neapolitan pizza perfect for a lunch break or a casual meal with colleagues. With quick service and great food, it is an easy and convenient option to enjoy without needing to go far.

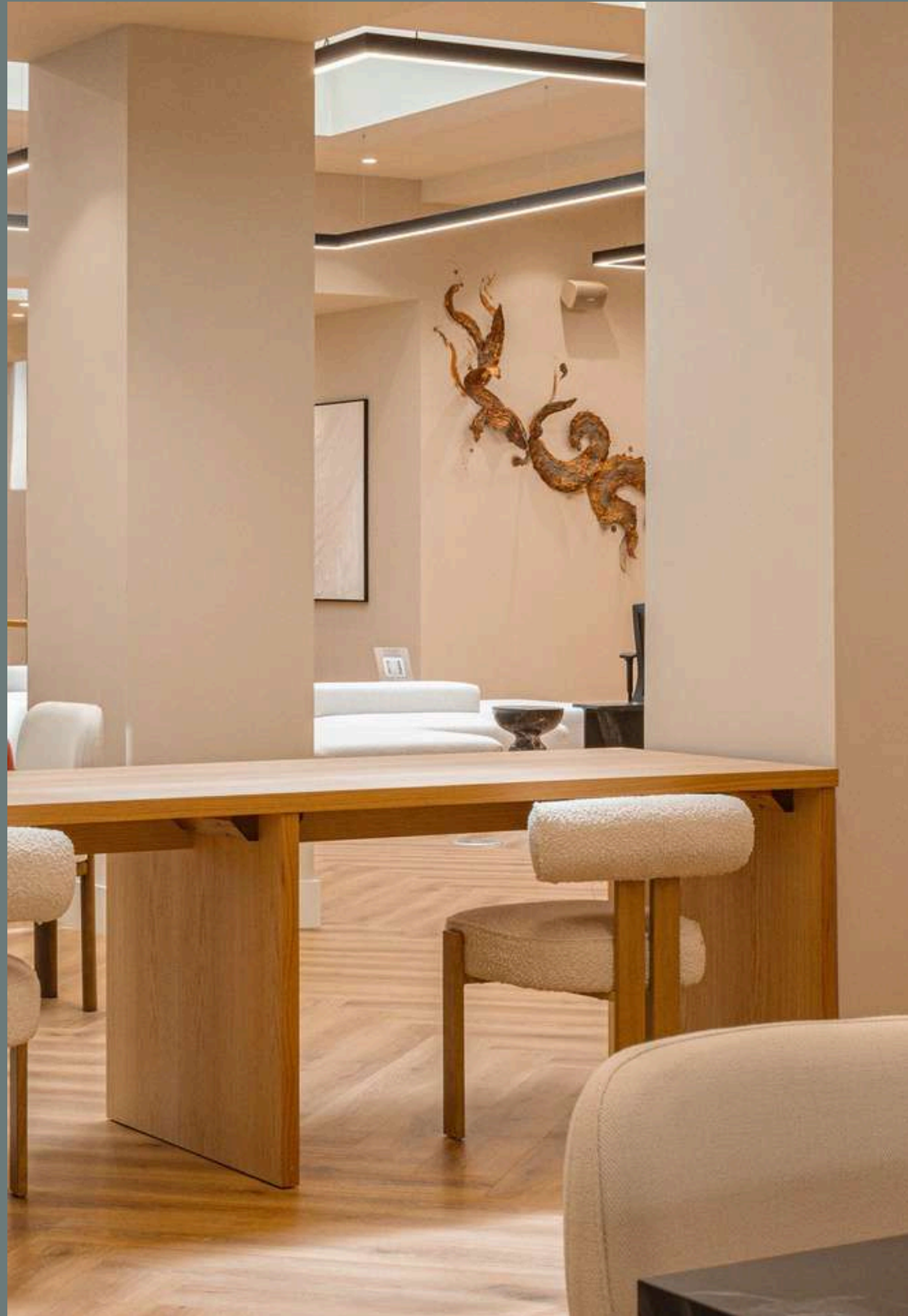


**ENTERTAINMENT**  
1Rebel Gym

Directly beneath our building with a side entrance on the main street, 1Rebel offers high-intensity fitness classes including spin, strength and conditioning. It is a convenient option for fitting in a workout before work, during lunch or after hours, with state-of-the-art facilities just moments from your desk. 15% Discount is available exclusively to our clients.

H A L K I N

24 EVERSOLT STREET, NW1 1DB



# OTHER HALKIN LOCATIONS

WE PRIDE OURSELVES ON OFFERING A UNIQUE COLLECTION OF LONDON ADDRESSES.

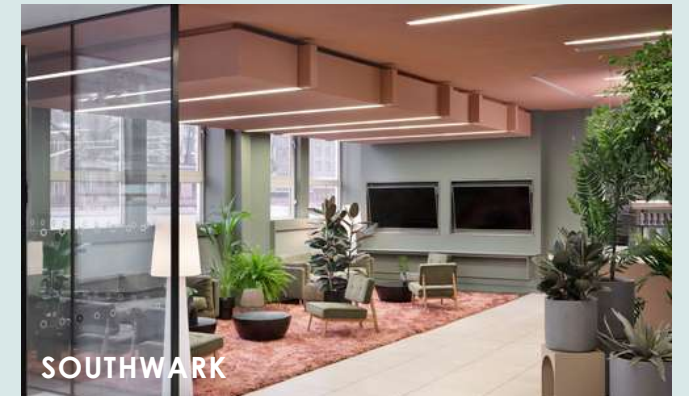
Rather than creating a cut and paste portfolio of identical buildings, each Halkin creation has its own personality and community ethos, reflecting its location and the businesses that work there.



BLACKFRIARS



MONUMENT



SOUTHWARK



MAYFAIR



ST PAULS



BANK



WATFORD JUNCTION

# CONTACT US

INFO@HALKIN.COM

+44 (0)20 3196 5777



24 EVERS HOLT STREET, NW1 1DB