

**PENN QUARTER
HISTORIC JENIFER BUILDING**



**400 7th St., NW
Washington
DC**

**OFFICES
FOR
LEASE**

**JACKSON
PRENTICE
202-841-8700**

**HANNAH
PRENTICE
TRAUL
703-304-4343**

www.JacksonPrentice.com

Location: Northwest corner of Seventh and D Streets, N.W. In the Penn Quarter of the East End, one block from the Portal entrance of Naval Memorial yellow line metro, near Capital One Arena/China Town just off Pennsylvania Avenue, NW.

Description: Commercial building perfect for general office, law offices or association windowed office, thru out and nice open area along 7th Street.

Term: 3-5 years

Zoning: High Density Commercial /with mixed use

	Demised Premises	Rental Rate
See attached	Suite LL1 approximately	1,382 RSF - \$3,000 mo. + electric/water
	Suite 202 approximately	1,601 RSF - \$4,800 mo. + electric/water
	8th Floor approximately	3,675 RSF - \$12,250 mo. + electric/water

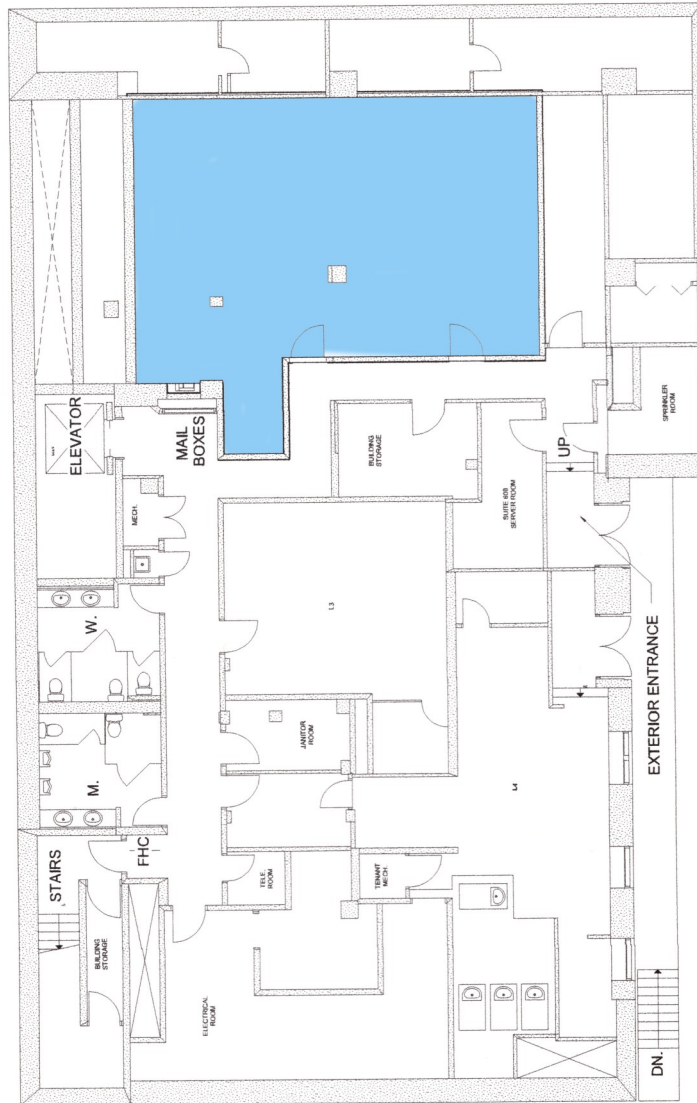
Landlord Incentive: Tenant improvement allowance and/or abatement TBD

Possession: Immediate



The information contained herein is subject to errors, omissions, changes in terms and condition, prior sale/lease and/or withdrawal from market, all without notice. All information is derived from sources deemed reliable; however, no warranties are either expressed or implied. Prospective purchasers/tenants shall rely on their own verification of the facts before committing themselves financially or otherwise.

Lower Level LL1



EXISTING PARTIAL BASEMENT FLOOR

① PLAN - 3/16" = 1'-0"

Second Floor Suite 202



Client

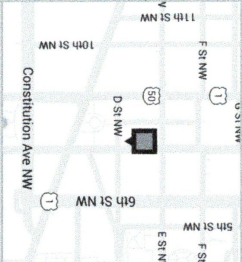
Jacobson Management

Version: Prepared: 26/08/2014
FP1A Measured: 22/08/2014

400 7th Street Northwest
Washington, District of Columbia

Floor 8

Please Refer to
Corresponding Area Chart



This work product has been prepared by Extreme Measures, Inc. pursuant to a contract with the Client for the sole benefit of and use by the Client. No third party may rely on this work product without the express written consent of a release letter from Extreme Measures, Inc.

extreme measures
Tel: 416 323 2859
Fax: 416 323 0855
www.extrememeasures.com

