

705 WHITE HORSE RD

VOORHEES TOWNSHIP, NJ 08043

PRIME
MEDICAL SPACE



2,505 SF PRIME MEDICAL SPACE

AVAILABLE FOR LEASE AND/OR SALE



CINDY WEINER

CWEINER@FLYNNCO.COM

215-561-6565 X 129



Total Building SF: 2,505 SF Medical Space

1st Floor: 1,879 SF

2nd Floor: 626 SF



Individualized tenant entrance



5 exam rooms, 2 offices, waiting room and reception area



2 ADA bathrooms



Convenient access to Route 561, 70 and I-295. In close proximity to Virtua and Jefferson Health Systems, shopping facilities and daycares



Price: Call for details

The
Flynn
Company

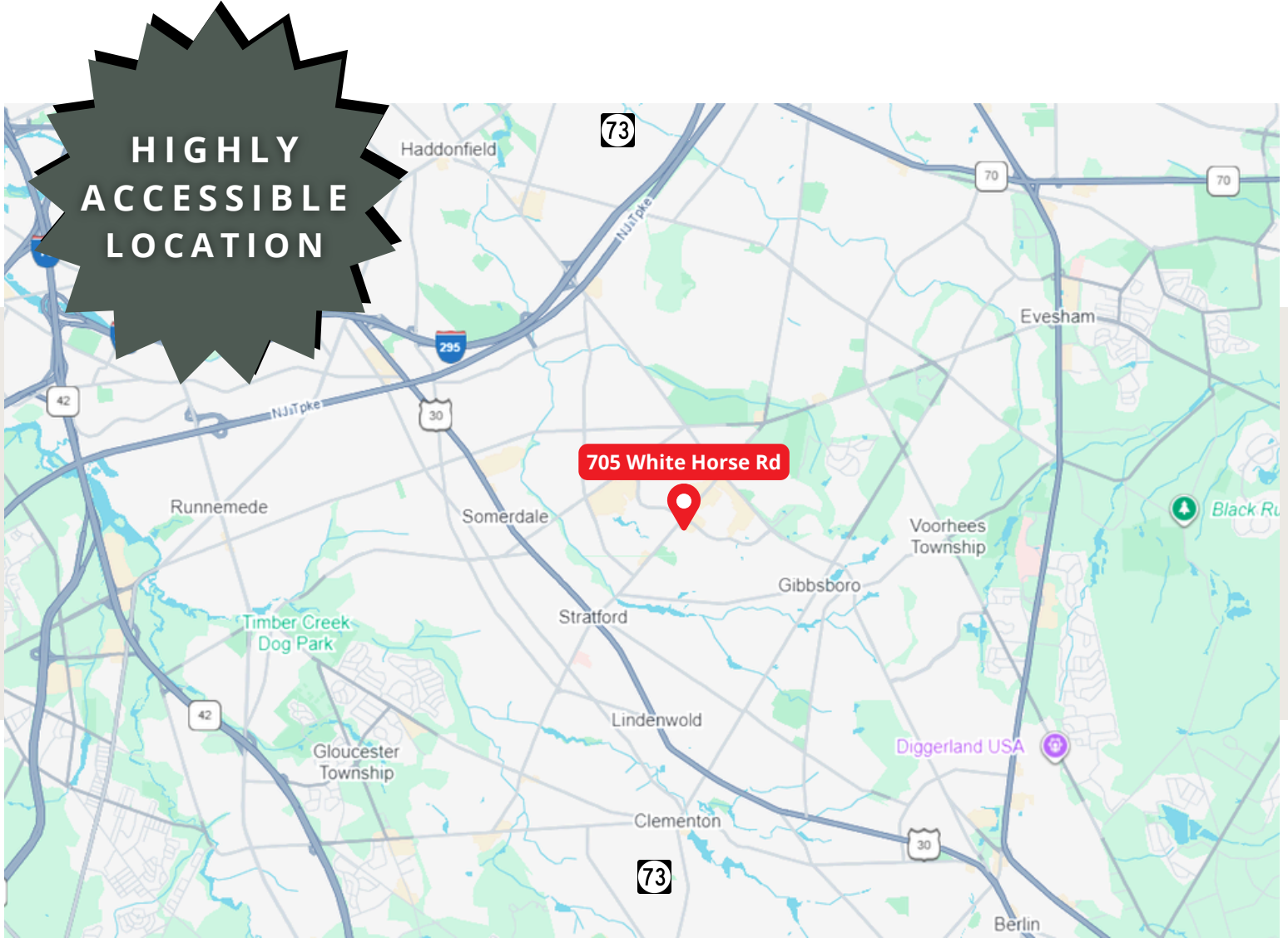
THE FLYNN COMPANY

WWW.FLYNNCO.COM | 1621 WOOD STREET, PHILADELPHIA, PA 19103 | 215.561.6565

PHOTOS



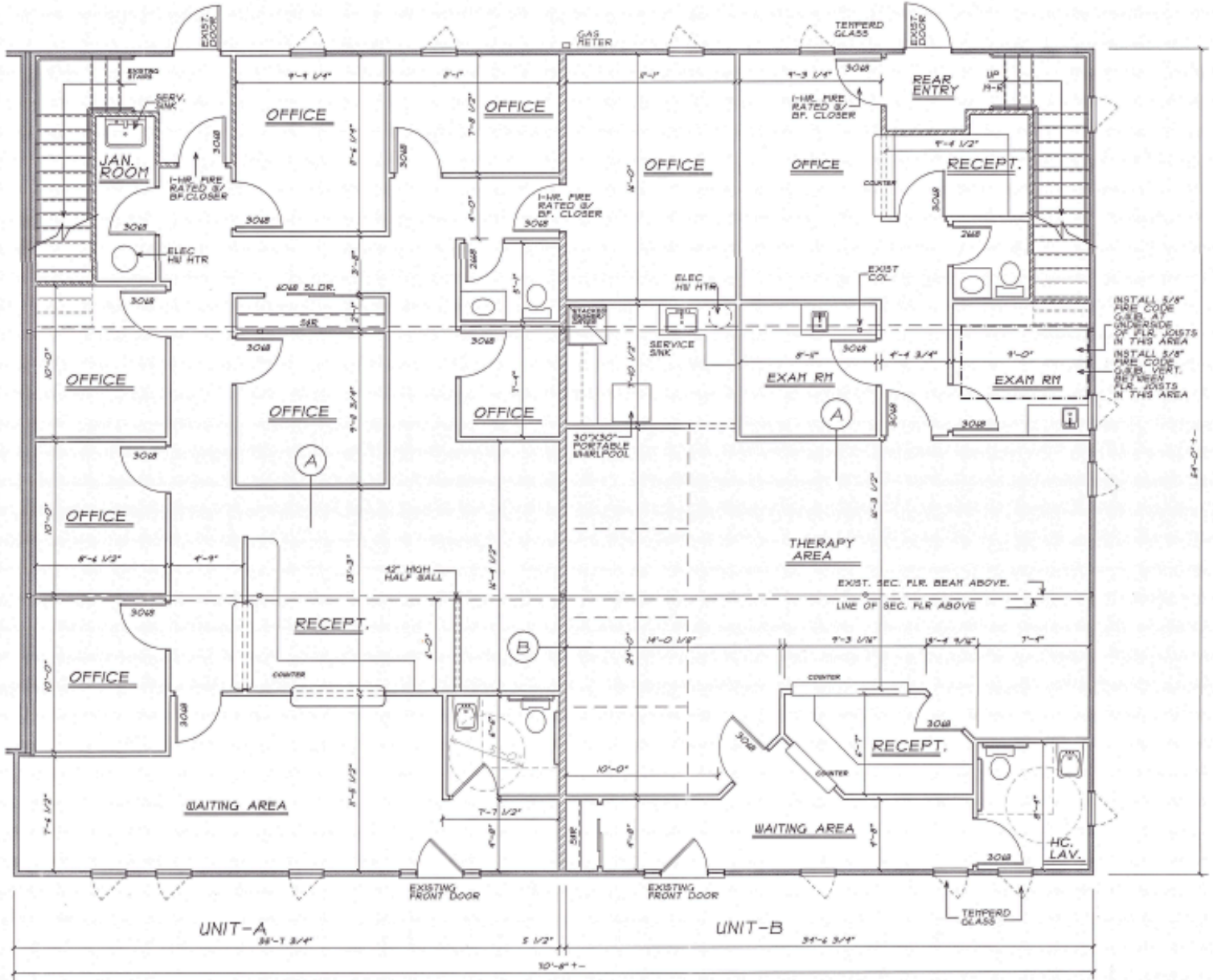
LOCATION



Voorhees, NJ

DEMOGRAPHICS	2 Miles	5 Miles	10 Miles
2024 Population	40,481	232,417	772,144
2024 Households	16,137	91,674	296,997
Avg Household Income	\$113,249	\$118,230	\$111,311
Total Consumer Spending	\$547.6M	\$3.2B	\$10.1B

FLOOR PLAN



FIRST FLOOR PLAN
 SCALE: 1/4"=1'-0"

CINDY WEINER
 CWEINER@FLYNNCO.COM
 856-309-8337
 215-561-6565 X 129

All information furnished regarding property for sale or lease is from sources deemed reliable, but no warranty or representation is made as to the accuracy thereof, and same is subject to errors, omissions, change of price, prior sale, lease, financing, withdrawal without notice or other conditions.