

For Lease

# 2314 LA MIRADA DR

*A ±3,952 industrial building ideally located in Vista, CA*





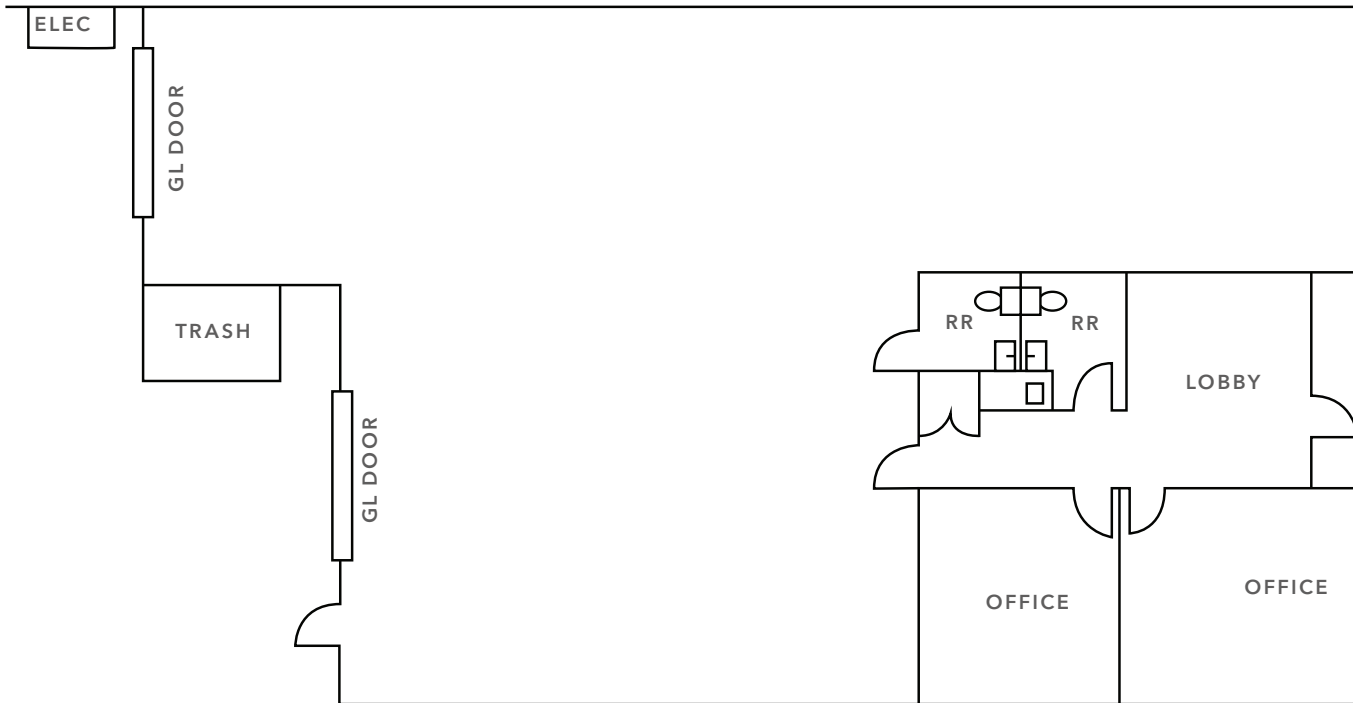
*2314 La Mirada Dr is a spacious ±3,952 SF, single-story, industrial building in a desirable North County location.*

ADDRESS	2314 La Mirada Dr, Vista, CA 92081
BUILDING SIZE	±3,952 SF
OFFICE AREA	±23%
ZONING	SP-VBP
CLEAR HEIGHT	18'
YEAR BUILT	2004
STORIES	1
BUILDING TYPE	Concrete Tilt-Up
PARKING	2.4/1,000 SF
LOADING	2 Grade-Level Doors

*\$1.75/SF*

LEASE RATE (GROSS)

# FLOOR PLAN



---

*±3,952 SF*  
AVAILABLE

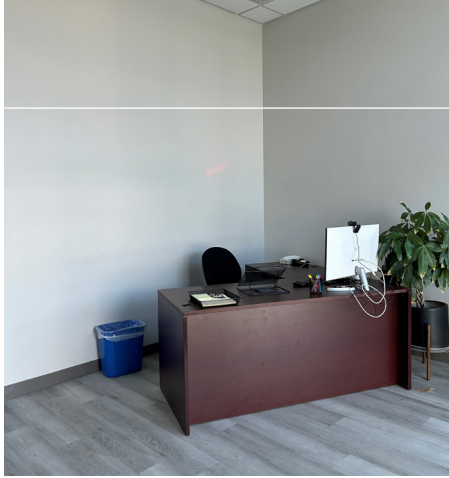
---

*±23%*  
OFFICE AREA

---

*\$1.75/SF*  
LEASE RATE (GROSS)

2314 LA MIRADA DR



AVAILABLE FOR LEASE



KIDDER MATHEWS



2314 LA MIRADA DR



*Exclusively  
listed by*

**JIM BENSON**  
760.822.7428  
jim.benson@kidder.com  
LIC N° 01204845

**KIDDER.COM**

This information supplied herein is from sources we deem reliable. It is provided without any representation, warranty, or guarantee, expressed or implied as to its accuracy. Prospective Buyer or Tenant should conduct an independent investigation and verification of all matters deemed to be material, including, but not limited to, statements of income and expenses. Consult your attorney, accountant, or other professional advisor.

**km** Kidder  
Mathews