

REDUCED RATE!

Colliers



FOR LEASE

2777 West Clay Street

St. Charles, MO 63301

Lease Rate:

~~\$16.00~~

\$15.00

PSF, Modified Gross

CONTACT US

Chad Burkemper, SIOR

Executive Vice President
+1 314 584 6279
chad.burkemper@colliers.com

Colliers

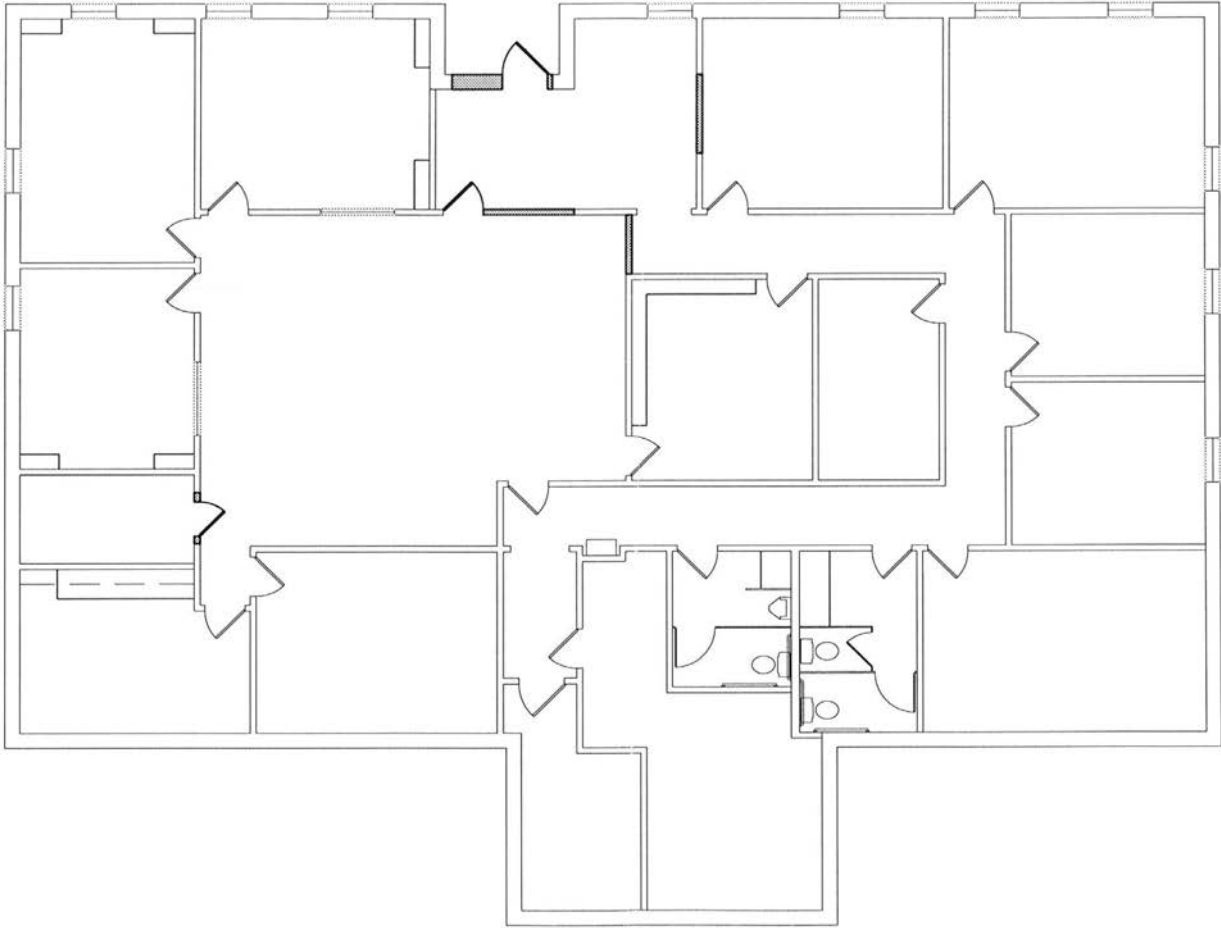
101 South Hanley Road
Suite 1400
St. Louis, MO 63105
+1 314 863 4447
colliers.com/stlouis

Office Space Available For Lease in St. Charles, MO

Highlights

- 3,825 SF office available
- Space is comprised of several private offices and an open area
- Well-maintained 8,500 SF brick professional building
- 51 parking spaces (6/1,000 RSF)
- Building and monument signage available
- Located approximately 3 miles from Barnes-Jewish St. Peters Hospital and 2 miles from SSM Saint Josephs Hospital
- Great access to I-70

FLOOR PLAN



Veterans Memorial Pkwy | 11,374 VPD

INTERSTATE 70 | 113,993 VPD

West Clay St | 11,036 VPD

PHOTOS



LOCATION



Demographics	Population	Households	Avg HH Income	Businesses	Employees
1 Mile	12,096	5,656	\$92,311	545	6,582
3 Miles	81,347	35,432	\$108,818	3,227	43,384
5 Miles	140,376	59,605	\$112,790	5,562	83,300

CONTACT US

Chad Burkemper, Sior
 Executive Vice President
 +1 314 584 6279
 chad.burkemper@colliers.com

Colliers
 101 South Hanley Road, Suite 1400
 St. Louis, MO 63105
 +1 314 863 4447
 colliers.com/stlouis



This document/email has been prepared by Colliers for advertising and general information only. Colliers makes no guarantees, representations or warranties of any kind, expressed or implied, regarding the information including, but not limited to, warranties of content, accuracy and reliability. Any interested party should undertake their own inquiries as to the accuracy of the information. Colliers excludes unequivocally all inferred or implied terms, conditions and warranties arising out of this document and excludes all liability for loss and damages arising there from. This publication is the copyrighted property of Colliers and/or its licensor(s). © 2026. All rights reserved. This communication is not intended to cause or induce breach of an existing listing agreement.