

# 11107 ROSELLE STREET

◆ SAN DIEGO, CALIFORNIA 92121 ◆



## JOSH WEST, SIOR

Senior Vice President, Partner | Lic. #01923375

858.458.3358 | jwest@voitco.com

## BRIAN MULVANEY, SIOR, CCIM

Senior Vice President, Partner | Lic. #00938944

858.458.3372 | bmulvaney@voitco.com

**Voit**

REAL ESTATE SERVICES

**MULVANEY**  
COMMERCIAL  
ALLIANCE 

# 11107 ROSELLE STREET

◆ SAN DIEGO, CALIFORNIA 92121 ◆

## PROPERTY FEATURES

- ◆ Easy access to I-5 and I-805
- ◆ Small lab suites available
- ◆ Renovated common areas
- ◆ Ample parking
- ◆ Shared walk-in cooler

## AVAILABILITY

SUITE NO.	SQ. FT.
201	±500 SF - ±1,500 SF
209/210	±820 SF



# 11107 ROSELLE STREET

◆ SAN DIEGO, CALIFORNIA 92121 ◆

## AVAILABILITY

### SUITE NUMBER

201

### SQUARE FEET

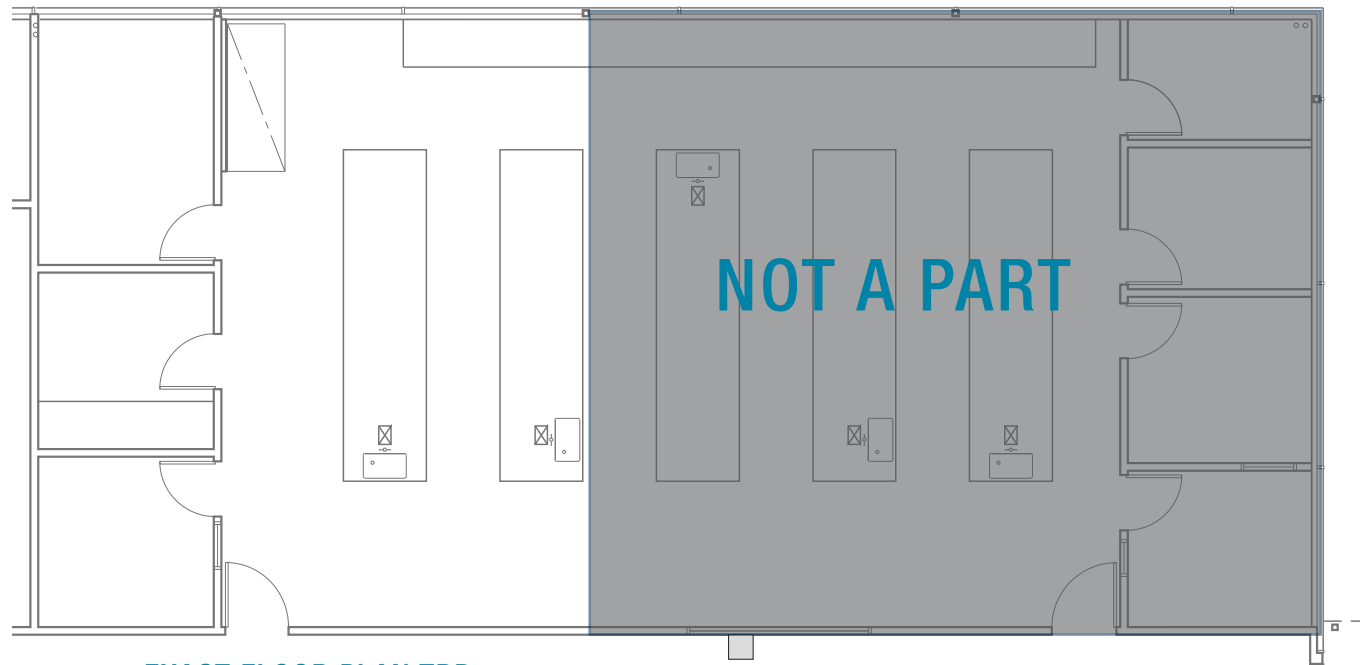
±500 SF - ±1,500 SF

### RATE

\$4.25 NNN PSF / Monthly  
(NNN's estimated at \$1.25 PSF)

### AVAILABILITY DATE

Now



EXACT FLOOR PLAN TBD

# 11107 ROSELLE STREET

◆ SAN DIEGO, CALIFORNIA 92121 ◆

## AVAILABILITY

### SUITE NUMBER

209/210

### SQUARE FEET

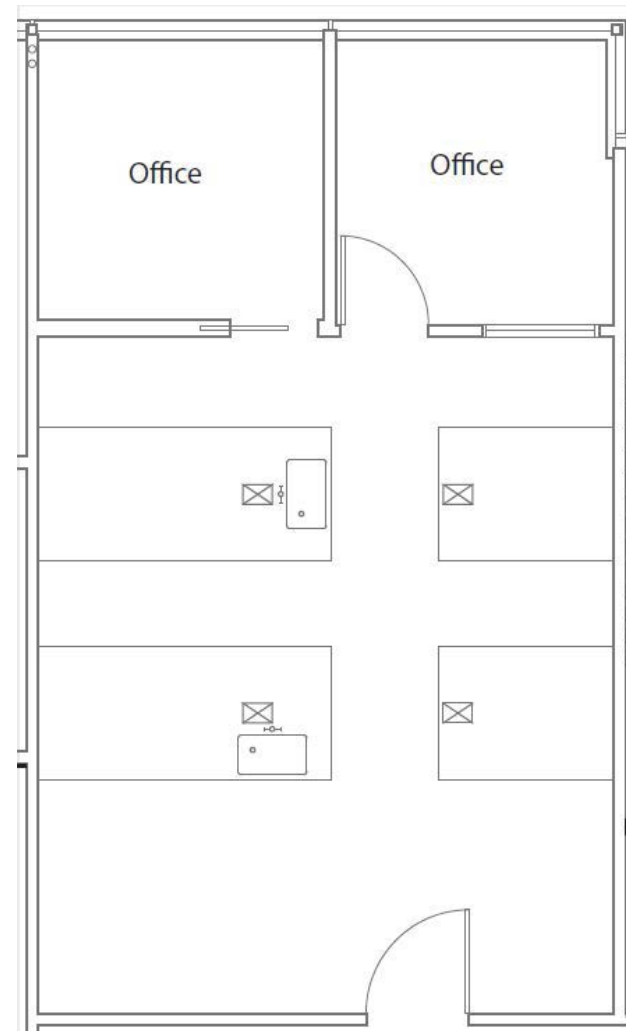
±820 SF

### RATE

\$4.25 NNN PSF / Monthly  
(NNN's estimated at \$1.25 PSF)

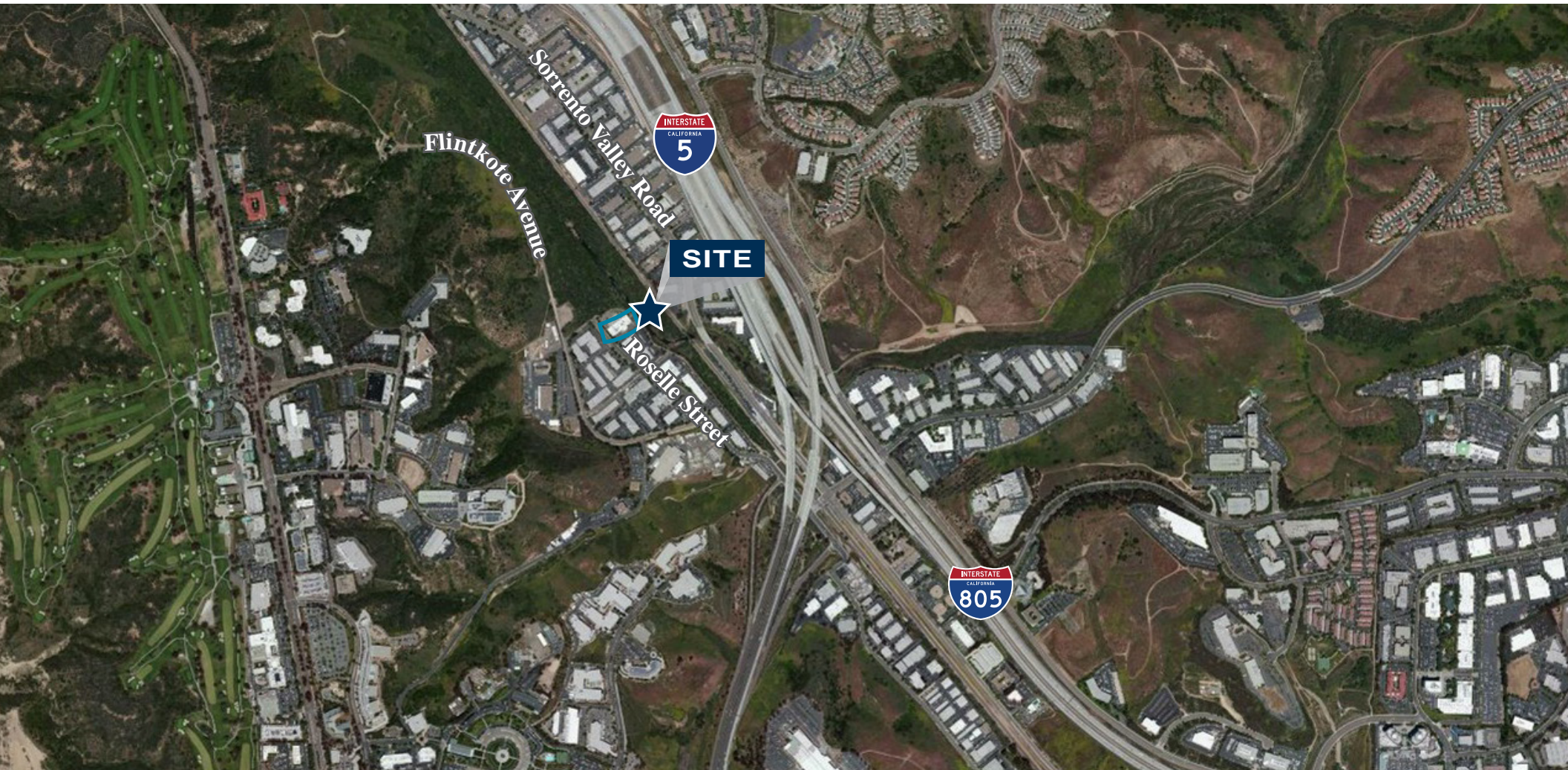
### AVAILABILITY DATE

Now



# 11107 ROSELLE STREET

◆ SAN DIEGO, CALIFORNIA 92121 ◆



## JOSH WEST, SIOR

Senior Vice President, Partner | Lic. #01923375  
858.458.3358 | jwest@voitco.com

## BRIAN MULVANEY, SIOR, CCIM

Senior Vice President, Partner | Lic. #00938944  
858.458.3372 | bmulvaney@voitco.com

**Voit**  
REAL ESTATE SERVICES

**MULVANEY** SIOR  
COMMERCIAL ALLIANCE CCIM

4180 La Jolla Village Drive, Suite 100, La Jolla, CA 92037 • 858.453.0505 • 858.408.3976 Fax • Lic #01991785 | www.voitco.com

Licensed as a Real Estate Salespersons by the DRE. ©2026 Voit Real Estate Services, Inc. All Rights Reserved. The information contained herein has been obtained from sources we deem reliable. While we have no reason to doubt its accuracy, we do not guarantee it.