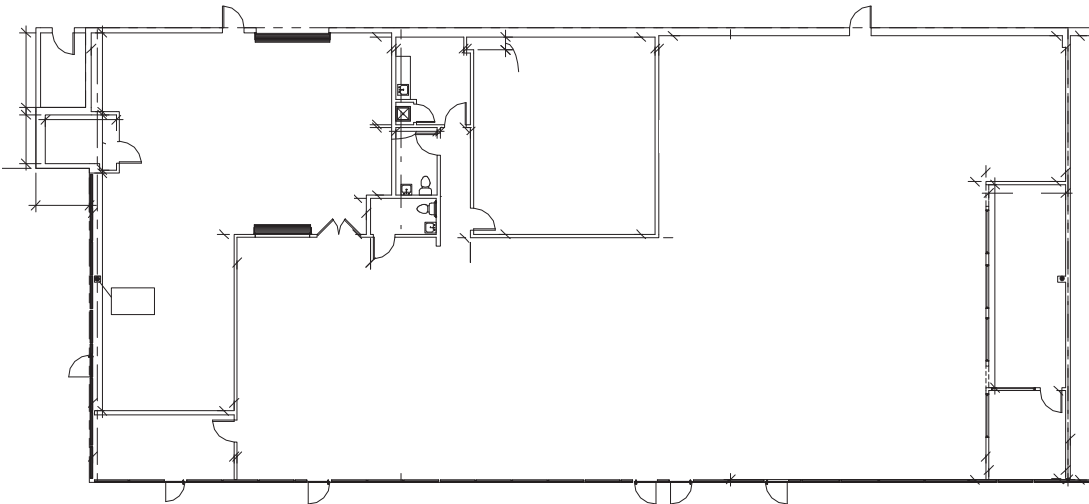


MINNESOTA ROW

WINTER PARK

BUILDING B

B100 - 8,515 SF Available April 2026



SITE PLAN



FOUNDRY
COMMERCIAL

foundrycommercial.com

FOR MORE INFORMATION, PLEASE CONTACT:

ALEX ROSARIO 407.540.7713 Partner alex.rosario@foundrycommercial.com	KEVIN WILL 407.458.5888 Senior Associate kevin.will@foundrycommercial.com
------------------------------------------------------------------------------	-----------------------------------------------------------------------------------

