



PROSPECT PLACE



2953 BUNKER HILL LANE, SANTA CLARA, CALIFORNIA



PROJECT HIGHLIGHTS

- ±116,888 SF Multi-Tenant Building
- Major Interior & Exterior Renovations Complete
- Furnished Market Ready Suites Available
- 4/1,000 Parking with Rare Covered Parking
- 12 EV Charging Stations
- Grade Level Loading
- Minutes From a Variety of Hotels & Restaurants
- Accessible to HWY 101 and HWY 237





AVAILABILITIES

Multiple Configurations and Contiguous Space Available from $\pm 4,047$ SF to $\pm 13,588$ SF

- **Suite 202:** $\pm 4,047$ SF — Market Ready

Floor 4: $\pm 13,588$ SF / Divisible

- **Suite 401:** $\pm 8,124$ SF
- **Suite 407:** $\pm 5,464$ SF





New Entryway,
Outdoor Amenity Area,
Common Areas &
Dramatic 2-Story Lobby





MARKET READY SUITES

Bright Workspaces,
Efficient Floor Plans &
Premium Finishes





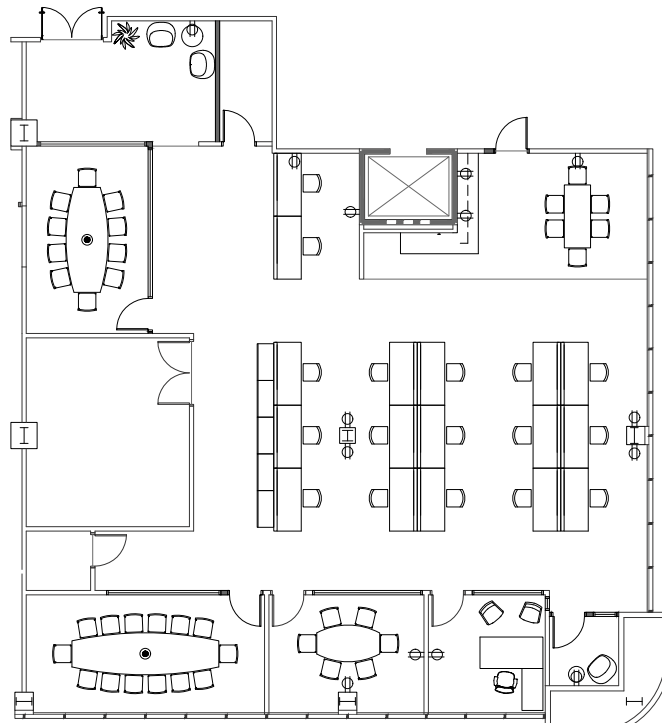
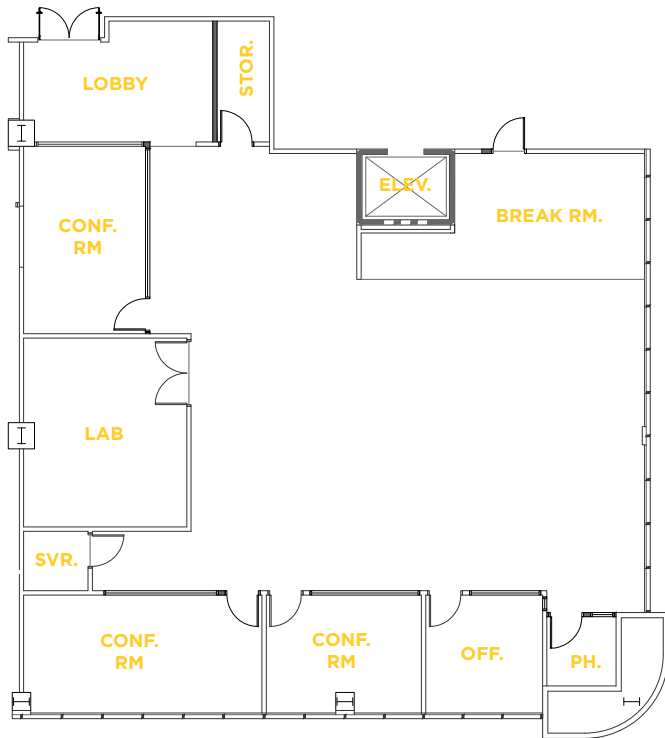
SUITE 202

- 3 Conference Rooms
- 1 Private Office
- Break Room
- Server Room
- Storage Room
- Lobby
- Open Office Area
- Lab

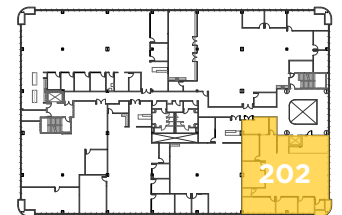
±4,047 SF

MARKET READY

360° VIEW VIRTUAL TOUR



CONCEPTUAL FURNITURE PLAN



BUNKER HILL LANE



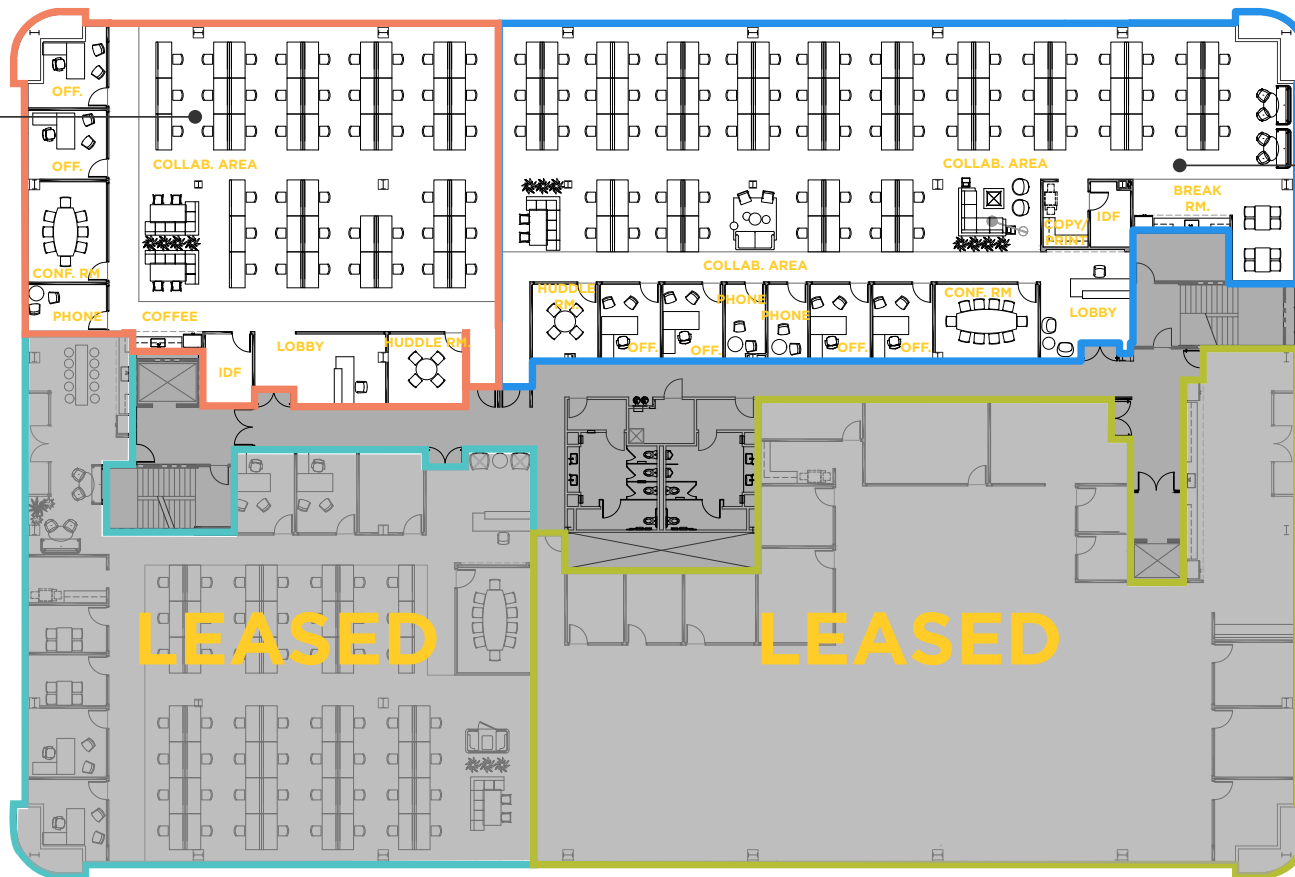
4TH FLOOR

SPEC MARKET READY PLAN

±5,464 SF – ±13,588 SF

SUITE 407
±5,464 SF

SUITE 401
±8,124 SF



LEASED

LEASED

DEMISING/CONCEPTUAL FURNITURE PLAN



BUNKER HILL LANE



AMENITIES



PROSPECT PLACE

- Taco Bell
- Joe's Chinese
- Togo's Loop Convenient Store
- Bawarchi Indian

- Hyatt Regency
- Truya Sushi
- Evolution Café & Bar @The Market

- Amarin Thai
- Café Falafel
- House of Bagels
- Iguanas
- Round Table Pizza
- Togo's

- In-N-Out
- Tomatina
- Subway
- Panda Express
- Mexicali Grill
- Jamba Juice
- Starbucks
- SmokeEaters
- Krispy Kreme
- World Wrapps
- YoYo Sushi
- Ben & Jerry's

- Whole Foods
- Specialty's Café & Bakery
- Fleming's Steakhouse
- Opa!
- Il Fornaio
- Puesto

- Polycomm Cafe
- 1 OZ Coffee
- Stadium Tech Cafe

- Embassy Suites

Planned Retail & Residential

Great America

Mission College

- Bourbon Steak

- Levi's Stadium

- Hilton La Fontana

- Marriott Parcel 104

- Future Retail
- Element Hotel

- Specialty's Cafe & Bakery

- Pedro's Mexican Birk's

- Target
- Panera
- Five Guys
- Sweet Tomatoes
- Chipotle
- Premier Pizza
- Coffee Bean & Tea Leaf
- CVS
- Chick-Fil-A
- Fresh & Easy
- Rok
- Hyatt House
- Courtyard Marriott

- Starbucks
- Safeway
- Fantasia Coffee & Tea
- Red Robin Gourmet Burgers
- Piatti
- Cold Stone Creamery
- Peet's Coffee
- Smashburger
- Premier Pizza
- Jamba Juice
- The Prolific Oven
- Chipotle Mexican Grill
- Mezbaan Bar & Indian
- Posh Bagel
- Yo Yo Sushi
- Jersey Mike's Subs
- Yan Can Asian Bistro
- Hyatt House

237

101

Lawrence Expressway

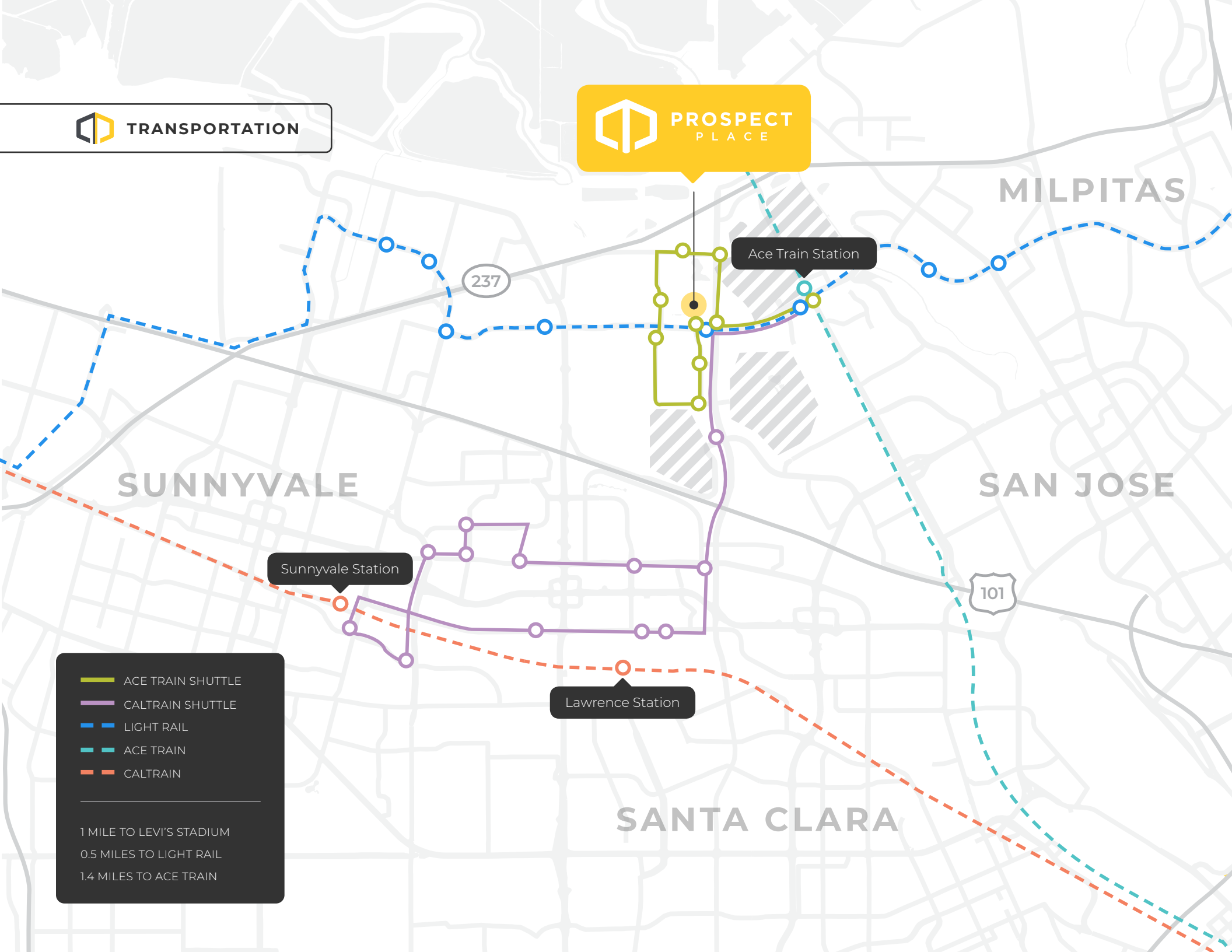
Great America Parkway

Montague Expressway

Lafayette Street

Tasman Drive

 **PROSPECT PLACE**



MILPITAS

237

Ace Train Station

SUNNYVALE


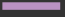



SAN JOSE

Sunnyvale Station

101

Lawrence Station

SANTA CLARA

-  ACE TRAIN SHUTTLE
-  CALTRAIN SHUTTLE
-  LIGHT RAIL
-  ACE TRAIN
-  CALTRAIN

1 MILE TO LEVI'S STADIUM
0.5 MILES TO LIGHT RAIL
1.4 MILES TO ACE TRAIN



PROSPECT PLACE

BRANDON BAIN

408 615 3416
brandon.bain@cushwake.com
LIC #01308375

ERIK HALLGRIMSON

408 615 3435
erik.hallgrimson@cushwake.com
LIC #01274540

WALT STEPHENSON

408 615 3458
walt.stephenson@cushwake.com
LIC #01793438



BUCHANAN STREET
PARTNERS

©2026 Cushman & Wakefield. All rights reserved. The information contained in this communication is strictly confidential. This information has been obtained from sources believed to be reliable but has not been verified. NO WARRANTY OR REPRESENTATION, EXPRESS OR IMPLIED, IS MADE AS TO THE CONDITION OF THE PROPERTY (OR PROPERTIES) REFERENCED HEREIN OR AS TO THE ACCURACY OR COMPLETENESS OF THE INFORMATION CONTAINED HEREIN, AND SAME IS SUBMITTED SUBJECT TO ERRORS, OMISSIONS, CHANGE OF PRICE, RENTAL OR OTHER CONDITIONS, WITHDRAWAL WITHOUT NOTICE, AND TO ANY SPECIAL LISTING CONDITIONS IMPOSED BY THE PROPERTY OWNER(S). ANY PROJECTIONS, OPINIONS OR ESTIMATES ARE SUBJECT TO UNCERTAINTY AND DO NOT SIGNIFY CURRENT OR FUTURE PROPERTY PERFORMANCE. COE-PM-West-04.15.2026

2953 BUNKER HILL LANE, SANTA CLARA, CALIFORNIA