



## RETAIL SPACE

# WHITE PLAINS, NY

## CITY CENTER

5 MAMARONECK AVENUE

### SIZE

Ground Floor	
Space A	27,360 SF
Space B	8,000 SF
Space C	3,620 SF

### ASKING RENT

Upon Request

### CO-TENANTS

Target, Nordstrom Rack, ShopRite, Burlington, Apple Cinemas, New York Sports Club, Buffalo Wild Wings, Bank of America

### NEIGHBORS

Red Horse by David Burke, The Opus Westchester, Fogo De Chao, Planet Fitness, CVS Pharmacy, La Bocca, Playa Bowls, Greca Estiatorio, Chazz Palminteri Italian Restaurant, Hudson Grille, Haiku Asian Bistro, Serafina, Mulino's of Westchester, Z Prime Italian Steakhouse

### COMMENTS

Highly visible on Mamaroneck Avenue

Ideally located in Downtown White Plains

Located near several corporate headquarters, including Heineken, IBM, PepsiCo, and J.P. Morgan

2,300 spot parking garage on premises

## CONTACT EXCLUSIVE AGENTS

### BRIAN VON SCHMID

bschmid@ripcony.com  
516.933.8880

### JEFFREY HOWARD

jhoward@ripcony.com  
516.933.8880

### BRIAN SCHUSTER

bschuster@ripcony.com  
516.933.8880



1000 Woodbury Road  
Suite 100  
Woodbury, NY 11797  
516.933.8880

Please visit us at [ripcony.com](http://ripcony.com) for more information

This information has been secured from sources we believe to be reliable, but we make no representations as to the accuracy of the information. References to square footage are approximate. Buyer must verify the information and bears all risk for any inaccuracies.



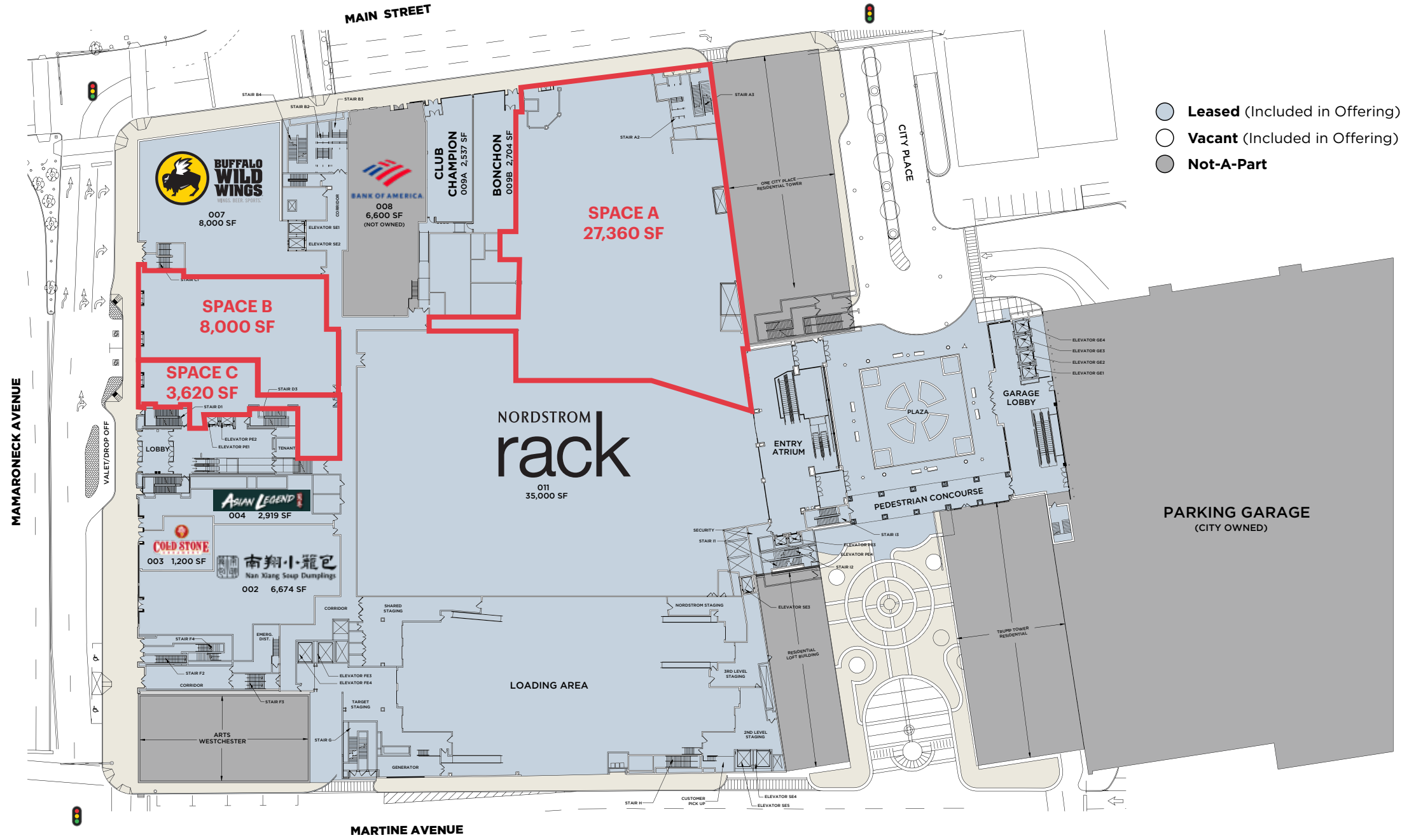


# PROPERTY PHOTOS

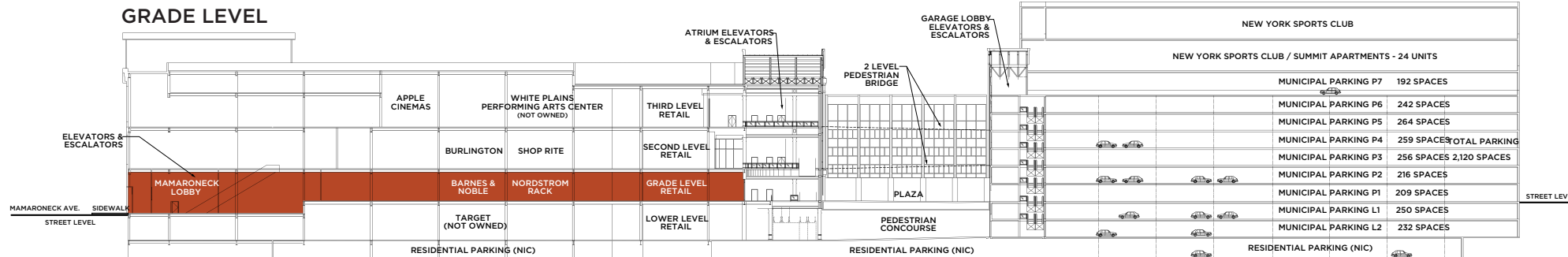


# SITE PLAN

## GROUND LEVEL



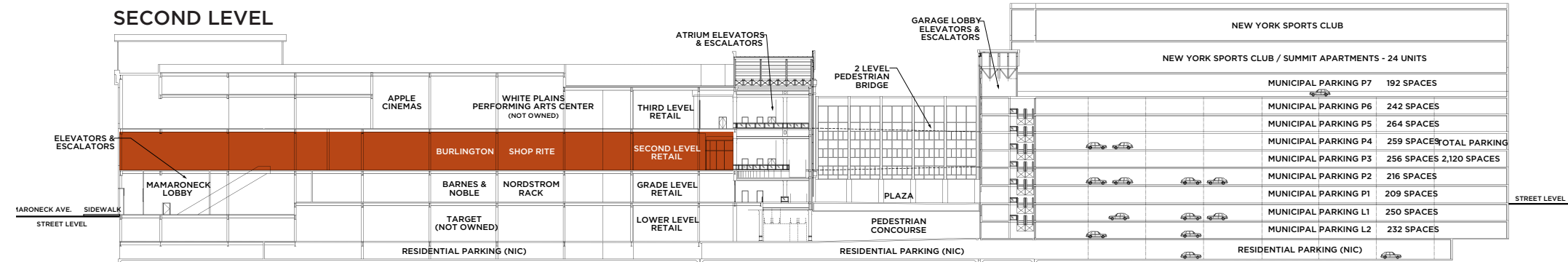
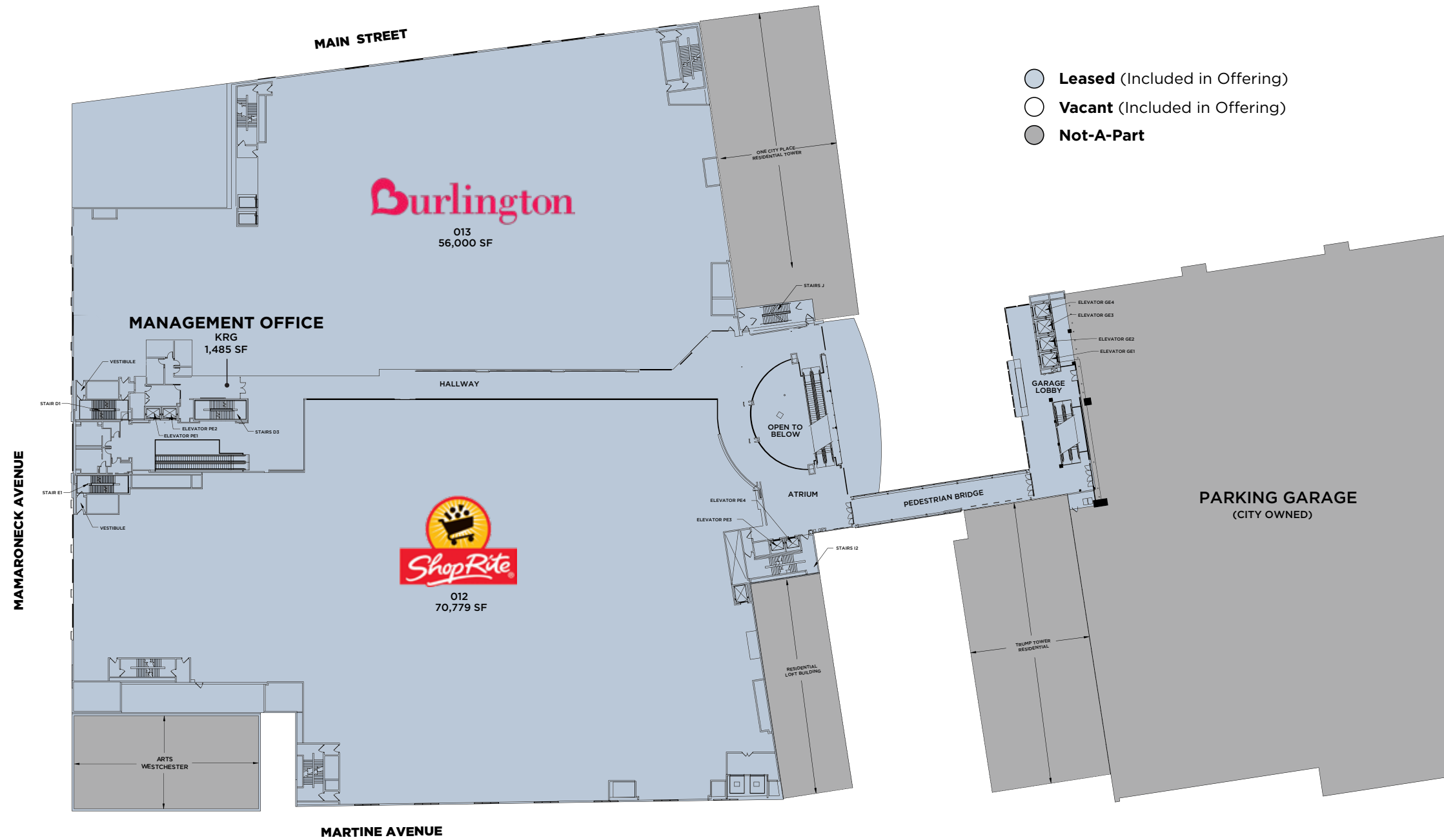
### GRADE LEVEL





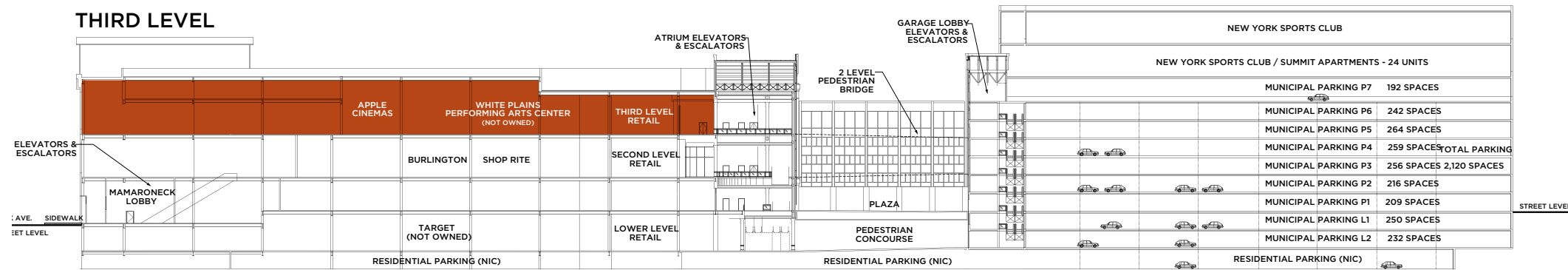
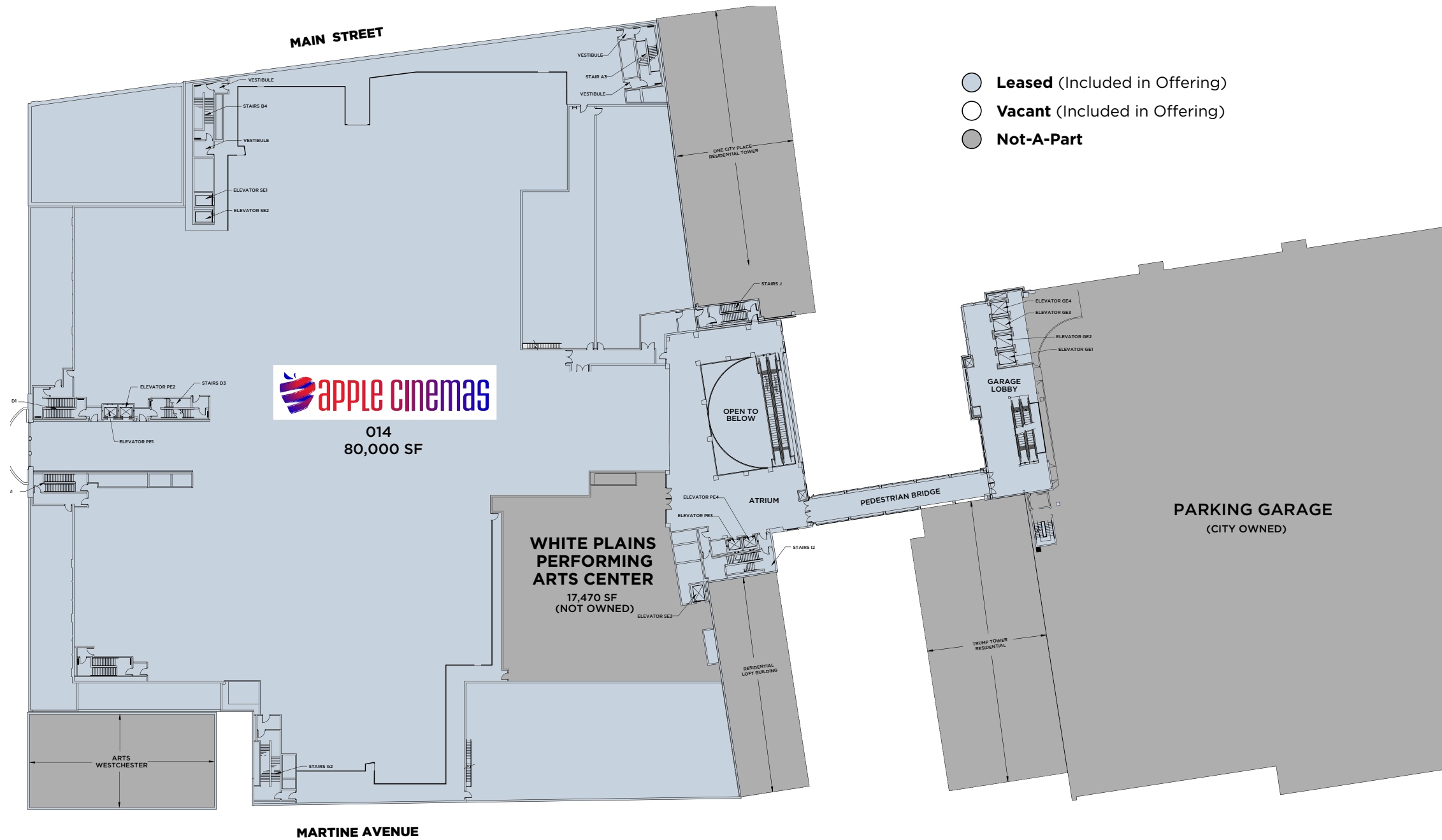
# SITE PLAN

## SECOND LEVEL

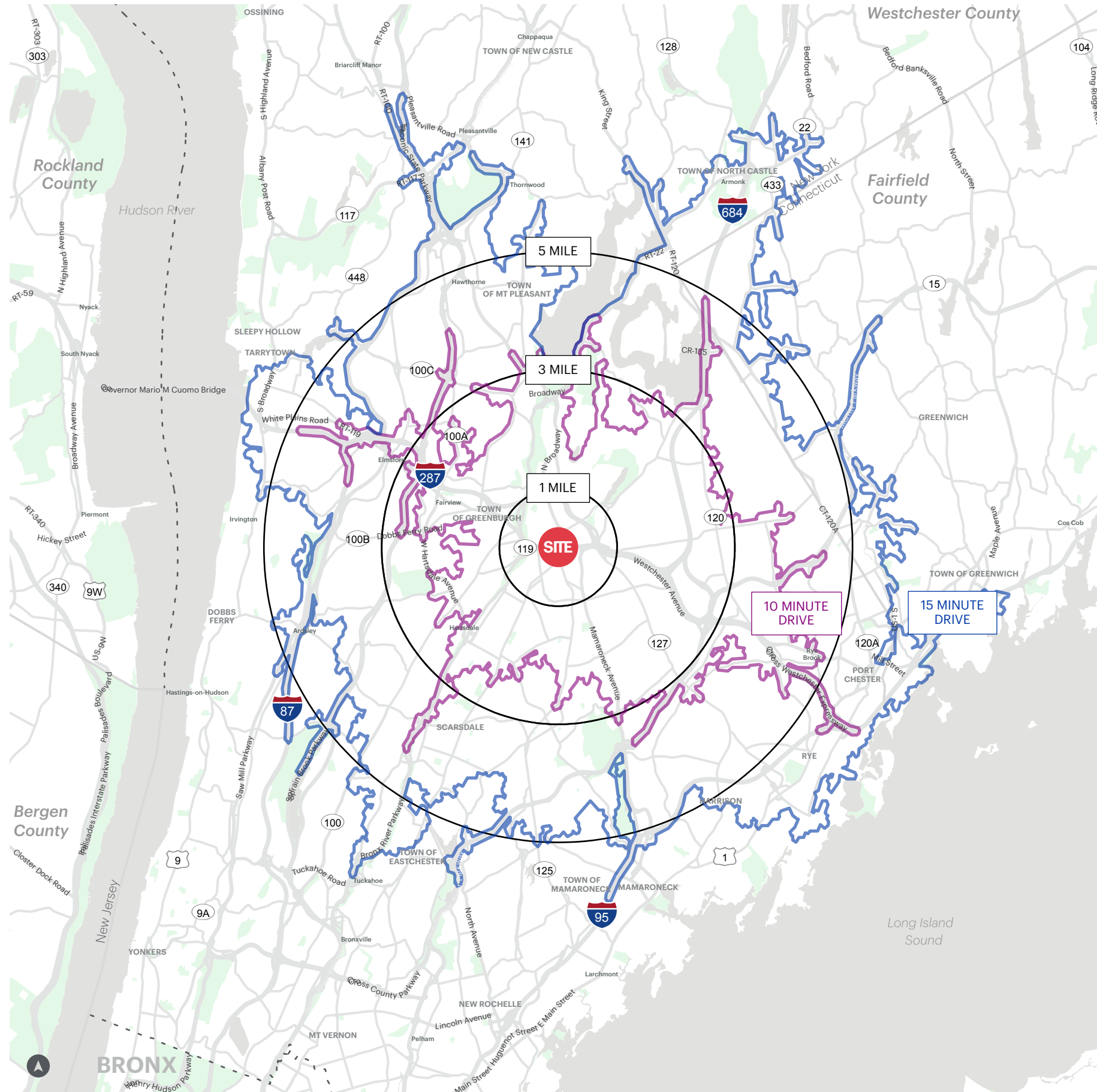


# SITE PLAN

## THIRD LEVEL



# AREA DEMOGRAPHICS



CITY CENTER WHITE PLAINS, NEW YORK

## 1 MILE RADIUS

<b>POPULATION</b>	41,587	<b>COLLEGE GRADUATES (BACHELOR'S +)</b>	15,638 - 50.0%
<b>HOUSEHOLDS</b>	17,793	<b>TOTAL BUSINESSES</b>	3,405
<b>AVERAGE HOUSEHOLD INCOME</b>	\$143,890	<b>TOTAL EMPLOYEES</b>	46,700
<b>MEDIAN HOUSEHOLD INCOME</b>	\$102,958	<b>DAYTIME POPULATION (W/ 16 YR +)</b>	65,743

## 3 MILE RADIUS

<b>POPULATION</b>	112,134	<b>COLLEGE GRADUATES (BACHELOR'S +)</b>	48,183 - 58.0%
<b>HOUSEHOLDS</b>	42,823	<b>TOTAL BUSINESSES</b>	6,538
<b>AVERAGE HOUSEHOLD INCOME</b>	\$180,326	<b>TOTAL EMPLOYEES</b>	91,926
<b>MEDIAN HOUSEHOLD INCOME</b>	\$121,215	<b>DAYTIME POPULATION (W/ 16 YR +)</b>	145,225

## 5 MILE RADIUS

<b>POPULATION</b>	211,323	<b>COLLEGE GRADUATES (BACHELOR'S +)</b>	96,319 - 65.0%
<b>HOUSEHOLDS</b>	75,723	<b>TOTAL BUSINESSES</b>	11,994
<b>AVERAGE HOUSEHOLD INCOME</b>	\$211,114	<b>TOTAL EMPLOYEES</b>	177,068
<b>MEDIAN HOUSEHOLD INCOME</b>	\$147,582	<b>DAYTIME POPULATION (W/ 16 YR +)</b>	280,166