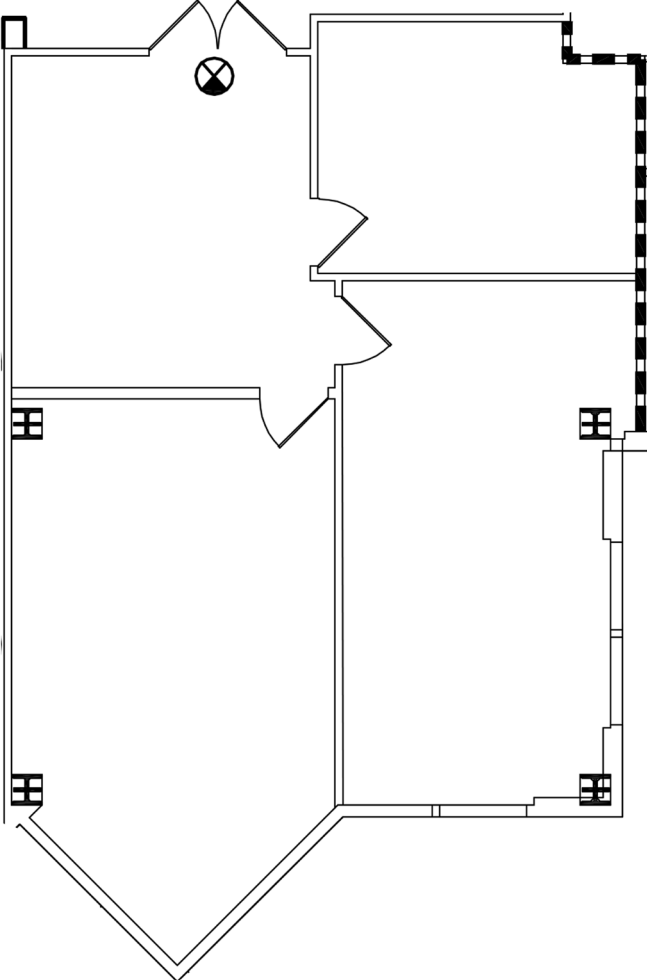
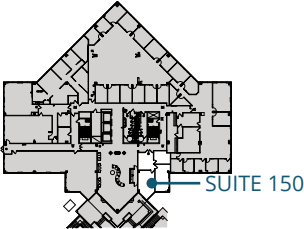


SPACE AVAILABLE

SUITE 150: 1,087 RSF



**THE POINTE AT 1901**  
1901 Ulmerton Road  
Clearwater, FL

No warranty or representation, expressed or implied, is made to the accuracy of information contained herein, and same is submitted subject to errors, change of price, rental or other conditions, withdrawal without notice, and to any special listing conditions imposed by our principals. PLANS NOT TO SCALE

**NICK POLO** | SENIOR ASSOCIATE  
Nick.Polo@FranklinSt.com | 813.682.6194

**CHAD RUPP** | MANAGING DIRECTOR  
Chad.Rupp@FranklinSt.com | 813.345.5891

 **FranklinStreet**  
Licensed Real Estate Broker | FranklinSt.com