

46

LEASE OPPORTUNITY | IOS

±1.21 Acres with ±2,200 SF Service Building

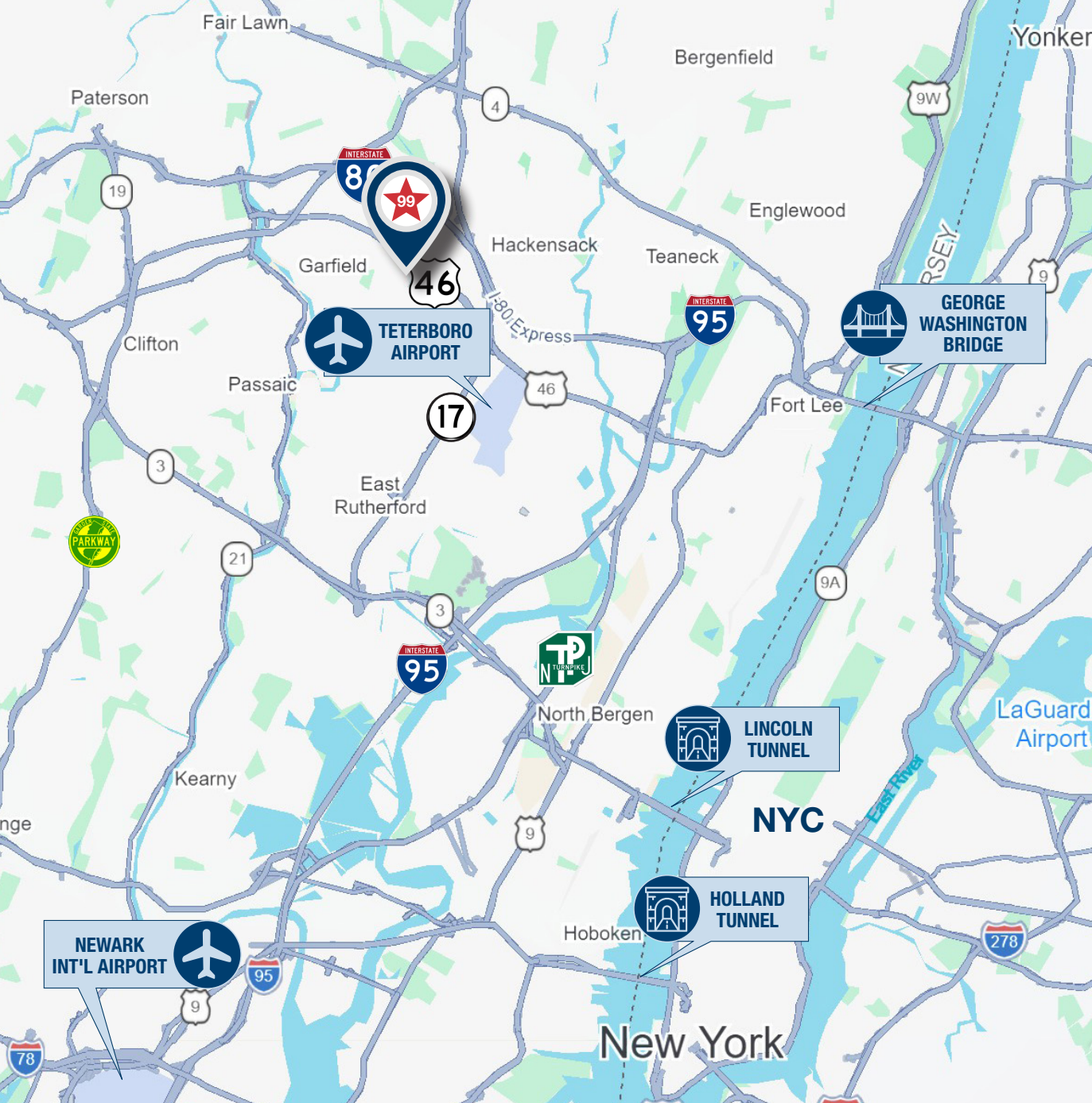


99 Dell Glen Avenue | Lodi, NJ

Kenneth D. Lundberg, SIOR
Senior Vice President
201 488 5800 x138
klundberg@naihanson.com

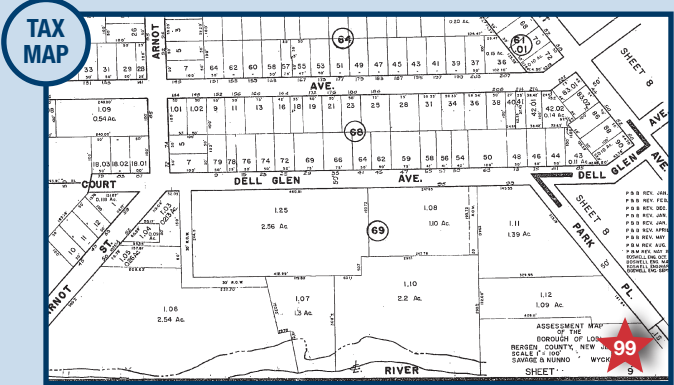
Patrick Lennon
Senior Vice President
201 488 5800 x109
plennon@naihanson.com

Lorenzo Lambiase, MBA, CCIM
Vice President
201 488 5800 x176
llambiase@naihanson.com



Property Highlights

- ±1.21-acre parcel
- ±2,200 SF existing service building
- On-site parking available
- Fenced / defined lot area suitable for outdoor use
- Ideal for contractors, service users, or yard-based operations
- Flexible site with both land and building utility



Overview

This ±1.21-acre site features a ±2,200 SF service building and ample outdoor area, offering a versatile leasing opportunity for users seeking a combination of building presence and usable land. The property is well-suited for businesses that require storage, vehicle parking, equipment staging, or light service operations, with the added benefit of an existing structure for office, dispatch, or support functions.

Located in Lodi, Bergen County, the property benefits from proximity to major regional roadways and surrounding commercial and industrial uses. Its central Northern New Jersey position supports efficient service coverage across Bergen County and nearby markets.

99 Dell Glen Avenue | Lodi, NJ