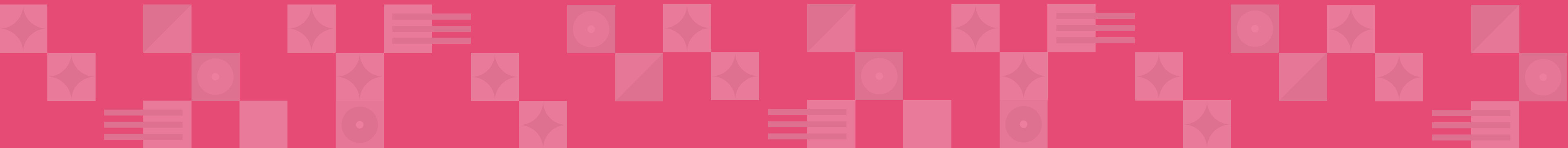
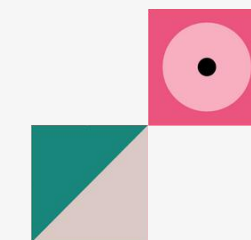


# fulham works

BY SPACEMADE .CO





# Welcome to Fulham Works

Fulham Works is jam-packed with a range of amenities to bring your team back to the office without the hassle of commuting to central London.

Our all-inclusive private offices come with flexible terms and all the features you'd expect plus so much more including hot desks, focus booths, meeting rooms, breakout areas, and Caravan coffee on tap – and we're dog-friendly!



# ABOUT SPACEMADE

WE EXIST TO REVIVE THE WORKSPACE AS A HUB FOR MEANINGFUL CONNECTIONS AND NEW OPPORTUNITIES.

At Spacemade, we believe that real-world connections shape our personal and professional journeys in ways unmatched by digital networks and interfaces. This is why we are on a mission to cultivate 1,000,000 real-world social connections within our spaces.

We have a bold vision: A new world of work where people flourish in the company of others, and each connection amplifies collective potential.

When you join Spacemade, you don't just get an office or a hot desk; you become part of a vibrant community of like-minded individuals who come together to share ideas, nurture meaningful connections and create new opportunities.

SPACEMADE





## The Space

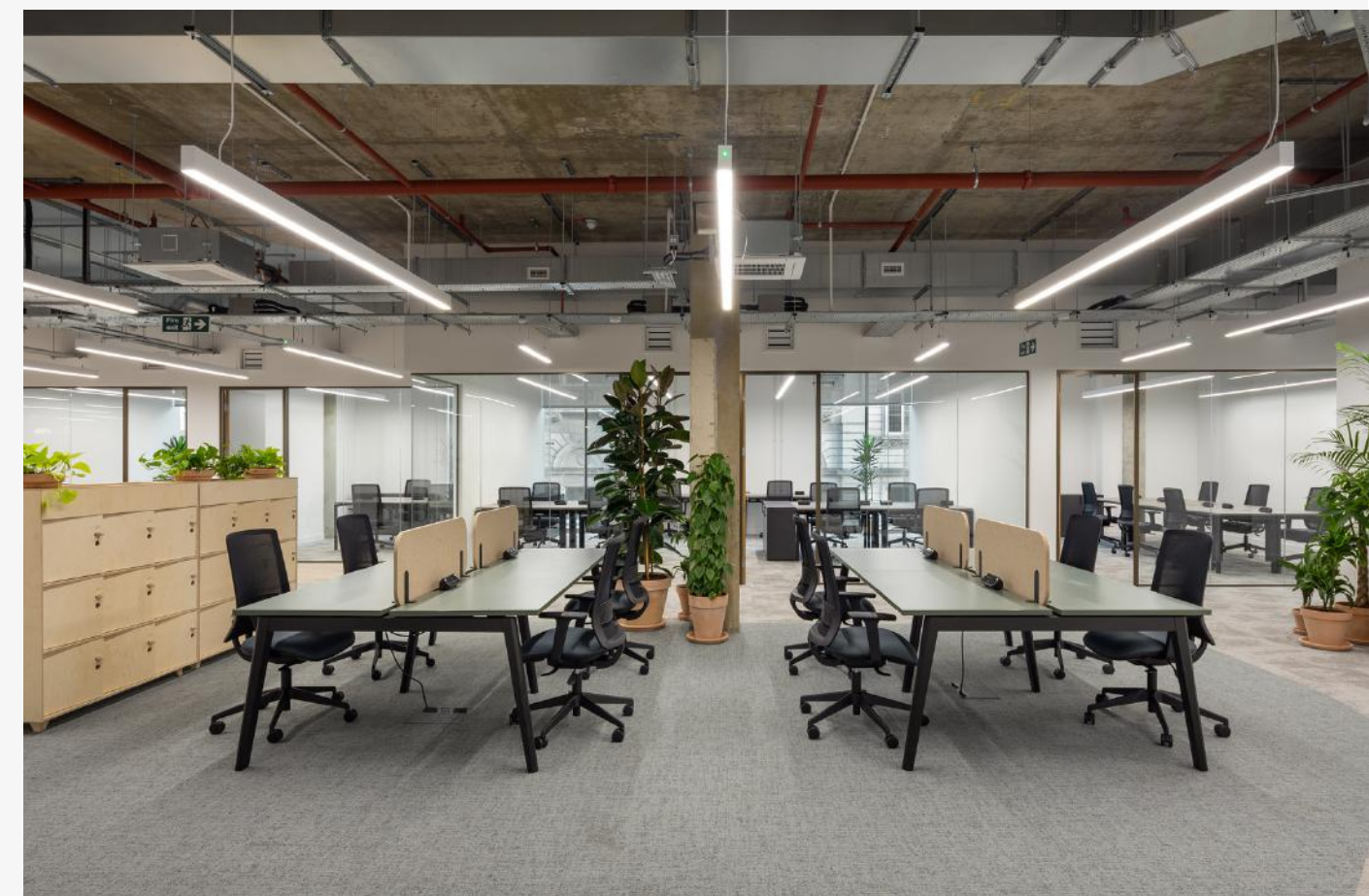
With membership options that are flexible and can grow as you do, Fulham Works offers private offices within a vibrant and productive community, including all the amenities you and your teams need.

### Amenities

- Private offices for teams of 2 - 12
- 2 Meeting Rooms with full connectivity
- Collaboration Spaces
- Focus Booth
- Hot Desks and Dedicated Desks
- Fully kitted kitchens with Artisanal Caravan Coffee and Brew Tea
- Daily fresh fruit, milk and filtered water stations
- Hospitality led Community Team onsite - Monday- Friday, 8:30-5:30
- Weekly & monthly member events
- Showers & Changing Facilities
- Got a furry friend? We are dog friendly in all our spaces

### Opening Hours

- Monday - Thursday: 4:45am - 1:30am
- Friday - Saturday: 4:45am - 2am
- Sundays: 7am - 12:30am





BY SPACEMADE .CO

**Private Office**

From £470\* per desk/month

**Fixed Desk**

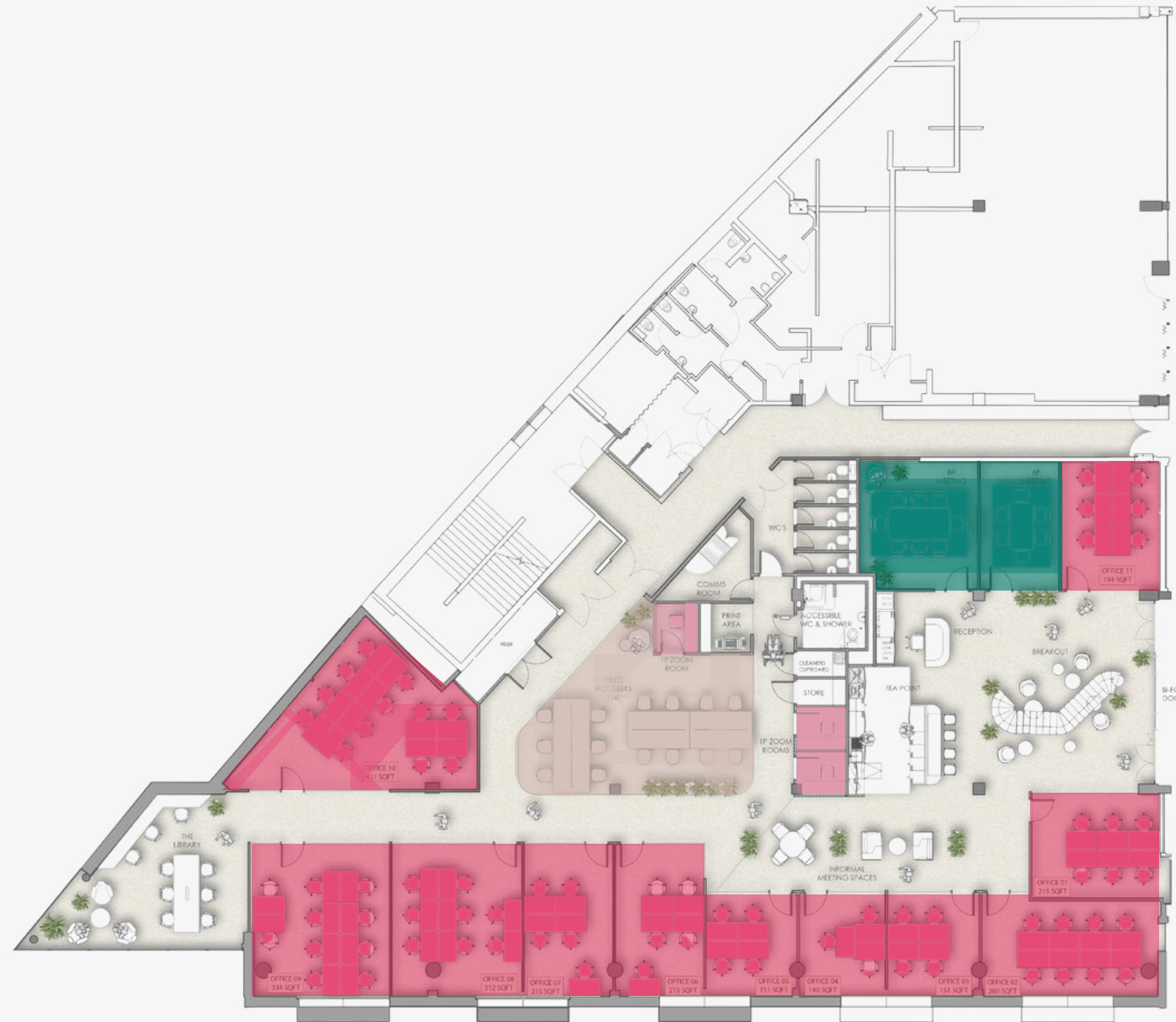
From £379\* per desk/month

**Hot Desk (per person)**

£99\* for 5 days, per month  
£169 \* for 10 days, per month  
£259\* for unlimited days, per month

**Key**

- Private Office
- Fixed Desk
- Meeting Room
- Focus Booth



\*All prices listed are priced per month and exclusive of VAT. Based on a 12-month contract.

# Meeting Rooms

Searching for the ideal space to host your team's brainstorming sessions or client presentations? Look no further! Our two fully-equipped meeting rooms cater to teams of up to eight people, ensuring your needs are met. Beyond our stylish and functional rooms, indulge in our amenities, including a fully-equipped kitchen and unlimited Caravan Coffee. Need catering? Just ask! With super-fast WiFi, large screens, and Zoom room tech, your meetings will be seamless. Book by the hour and boost your team's productivity!



## Parsons

**£40p/h**

Members enjoy a 1/3 saving on all bookings

**Meeting room for up to 6 people**



## Imperial

**£50p/h**

Members enjoy a 1/3 saving on all bookings

**Meeting room for up to 8 people**

[>>> CLICK HERE TO BOOK A MEETING ROOM](#)

The meeting rooms at Fulham Works are named after the two nearest tube stations. (Not including Fulham Broadway!)

# In the Neighbourhood

With its tree-lined streets, stunning river views, and village feel, Fulham has become one of West London's most popular neighborhoods. Bordering the equally upmarket and fashionable areas of Chelsea, Hammersmith, and Kensington, and with Battersea and Putney just across the bridge, Fulham is highly sought after by young professionals, families, and even celebrities.



[>> CLICK HERE TO READ OUR NEIGHBORHOOD GUIDE](#)



## An After Work Treat

There's no shortage of good places to eat in Fulham but what's more special than dining at London's only Michelin-starred pub. The Harwood Arms, serves authentic British cuisine, people come from miles just to try the famous Scotch Eggs.

click to  
find out  
more!



## Take a Break from City Life

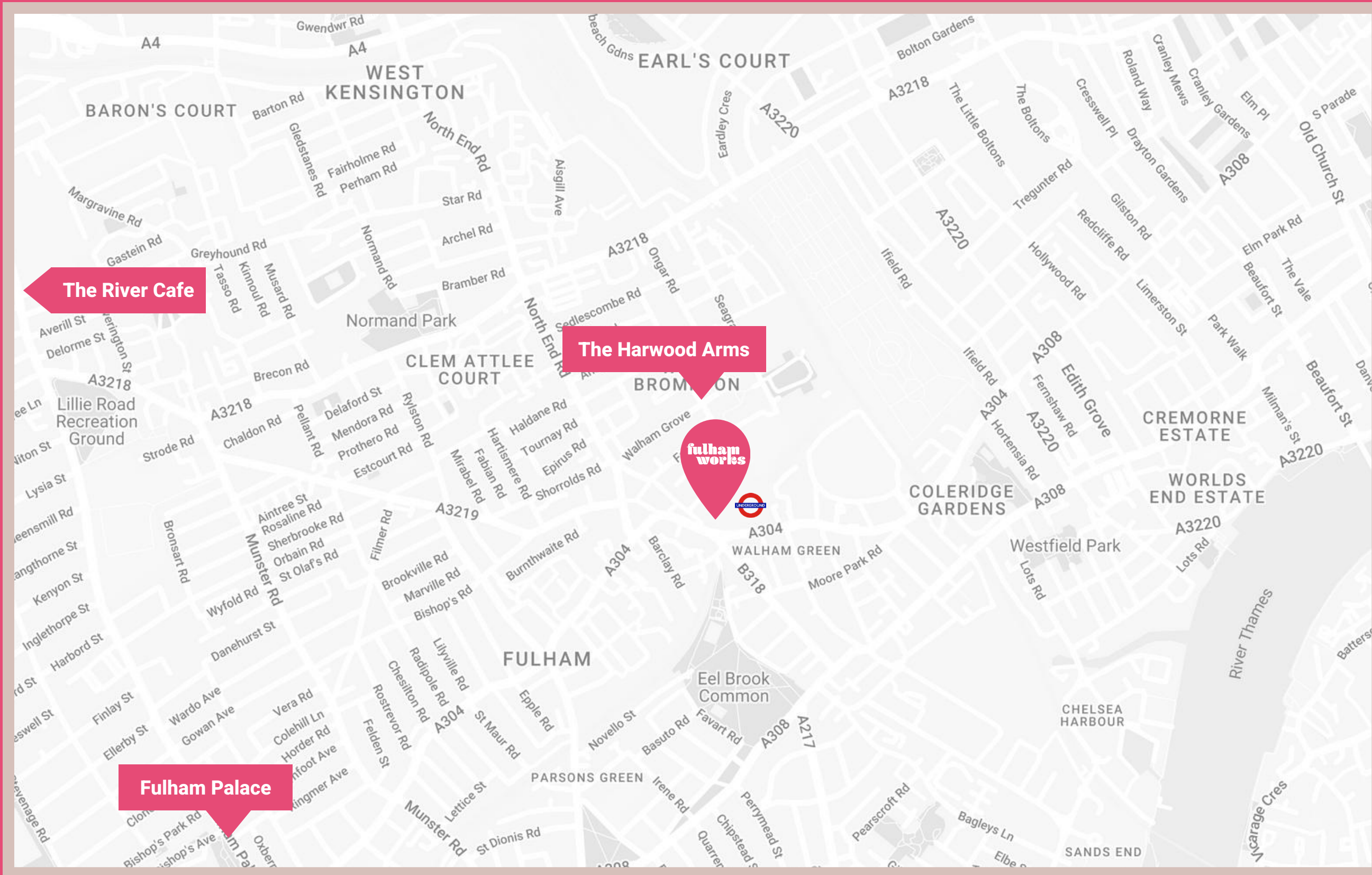
Bishops Park is one of the most well-loved spots in the area. Running adjacent to the River Thames, this Grade II listed park has a sculpture garden, rose garden, lakes, ponds and plenty of pathways, as well as a range of sporting facilities including table tennis tables and basketball hoops.



## A Must-Visit in Fulham

Fancy wondering around a palace? Explore the beautiful botanical gardens of Fulham Palace, along with the Palace itself, which was home to the Bishops of London for more than 1,300 years. You can sign up for history tours of the Palace, alongside a collection of events, from beekeeping 101 to listening to jazz on the lawn.







**The Harwood Arms**  
 1786 gastropub with a wood-burning stove, riverside terrace, and outdoor barbecue kitchen.

**Fulham Palace**  
 Paintings, archaeology, and artifacts tracing the history of the Palace site from prehistoric times.

**River Cafe**  
 The River Café is a restaurant in the Borough of Hammersmith and Fulham, London, specializing in Italian cuisine.

**Fulham Works by Spacemade**  
 Unit 3, Fulham Broadway Centre, Fulham Rd., London SW6 1BW  
 ///watch.lamp.score

- Easily Accessible**
-  **Fulham Broadway**  
(1 min walk)
  -  **Parsons Green**  
(13 min walk)

# TAKE A VIRTUAL TOUR

Step inside and discover a space where productivity meets comfort and creativity thrives.

From focus booths to sun-kissed lounges, every corner has a story to uncover.



**fulham  
works**

BY SPACEMADE .CO

**>> TAKE ME TO  
FULHAM WORKS**

**SPACEMADE**

**fulham  
works**

BY **SPACEMADE** .co



**T:** 020 8064 2462

**E:** [fulhamworks@spacemade.co](mailto:fulhamworks@spacemade.co)

**>> [CLICK HERE FOR MORE INFO](#)**



## Get in touch

**Seyi Awotunde**

Sales Manager

**T:** 07526 509 378

**E:** [seyi@spacemade.co](mailto:seyi@spacemade.co)

[spacemade.co](http://spacemade.co)