

OFFICE SPACE FOR LEASE



**GOLDSCHMIDT
& ASSOCIATES**

Commercial Real Estate Group



**1941 Palmer Avenue
Larchmont, New York**

Property Features

- » 3,950 RSF. Can Be Divided
- » Elevator Building
- » Heavily Windowed
- » Separate Electric & HVAC
- » Furniture Can Be Included
- » On Site and Street Parking
- » 24/7 Access
- » Short Walk to Metro North Train
- » Close to Exit 16 off I95
- » Close to Banks, Restaurants, Shopping
- » Immediate Occupancy

Asking Rent: \$32- \$35 per SF

CONTACT

Exclusive Agent:

Eric S. Goldschmidt

Phone: 914-723-1616

Email: eric@ga-re.com

All information furnished regarding property for sale, rental or financing is from sources deemed reliable; but no warranty or representation is made to the accuracy there of and same is submitted subject to errors, omissions, changes of price, rental or other conditions prior sales, sales, lease or withdrawal without notice.

1941 Palmer Avenue Larchmont, NY



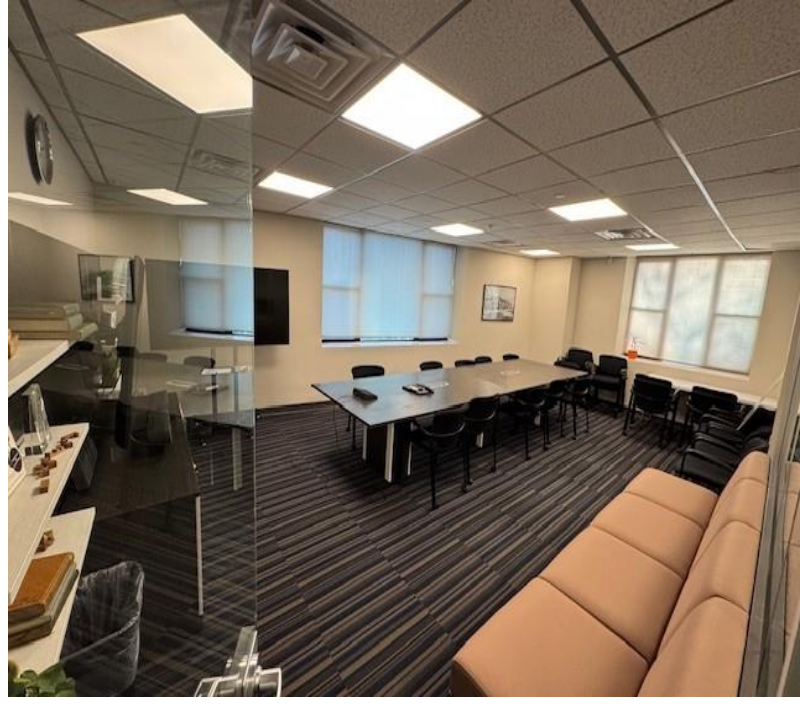
① SECOND FLOOR PLAN

BAR LARCH ASSOCIATES

March 25th, 2025



1941 Palmer Avenue Larchmont, NY



1941 Palmer Avenue Larchmont, NY



1941 Palmer Avenue Larchmont, NY

