

# 1825 S GRANT STREET

SUITE 400 | ±8,918 SF

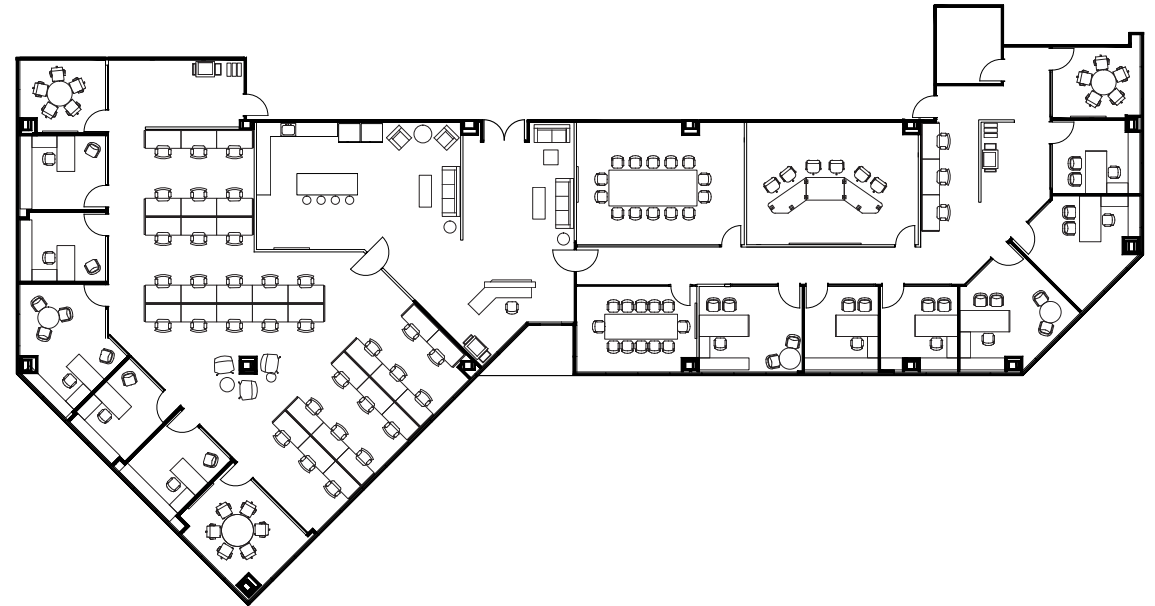
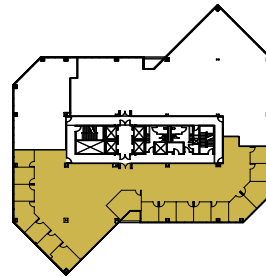
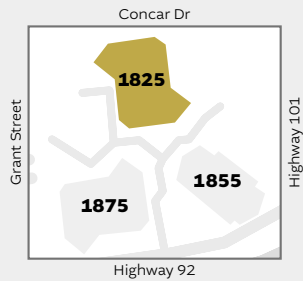
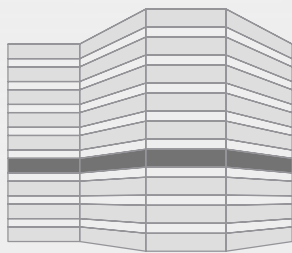
HYPOTHETICAL SPEC SUITE

move-in ready

13 private offices

4 conference rooms

break area



**Mark Bodie**  
mark.bodie@jll.com  
+1 650 480 2212  
CA Lic # 01941415

**Toss Vallentine**  
toss.vallentine@jll.com  
+1 650 480 2133  
CA Lic # 01742629

**Clarke Funkhouse**  
clarke.funkhouser@jll.com  
+1 650 480 2042  
CA Lic # 01252763

**Chris Blom**  
chris.blom@jll.com  
+1 650 480 2057  
CA Lic # 02031205

**Soroush Aboutalebi**  
soroush.aboutalebi@jll.com  
+1 650 480 2163  
CA Lic # 02180627