



	Itemized Charges	Mail Plan	On-The-Go Office	V-Office Part-Time Office	V-Office Plus Part-Time Office
<b>*All Services &amp; Prices are Per User</b>		<b>\$59/mo</b>	<b>\$129/mo</b>	<b>\$209/mo</b>	<b>\$299/mo</b>
<b>Mail Service**</b> <i>We collect your mail. Use our business address on your biz cards, web site, and marketing collateral</i>	\$59/month	Included	Included	Included	Included
<b>Blazing Internet</b> <i>Enterprise-grade internet in shared and private areas</i>	Priceless	Included	Included	Included	Included
<b>Member Resources</b> <i>Access to client portal and member events</i>	Priceless	Included	Included	Included	Included
<b>Beverage Service</b> <i>The libations in our café – caffeinated or not</i>	\$19/month	Included	Included	Included	Included
<b>Meeting Room Discounts</b> <i>Overage invoiced at 15% off the hourly rate for all memberships.</i>		Included	Included	Included	Included
<b>Package Notification</b> <i>You are notified of courier items when they are delivered</i>	\$6.00 per instance		Included	Included	Included
<b>Local Phone Number &amp; Unified Messaging</b> <i>Includes voicemail, 24/7 auto attendant, with voicemail sent as WAV email attachment</i>	\$34/month		Included	Included	Included
<b>Personalized Call Answering</b> <i>Your calls are answered by our receptionist according to your specifications from 8:30 AM to 5:00 PM PT</i>	\$69/month		Included	Included	Included
<b>20-Credit Bundle***</b> <i>For access to day offices, meeting rooms and coworking space. Used in 1-hour increments.</i>	\$149/month (\$109 add-on)			First 20 credits free/month	First 50 credits free/month
<b>Digital Mail****</b> <i>Mail Alerts, Forwarding &amp; Scanning. We can forward, scan, or shred per your instructions.</i>	\$49/month or \$8 per instance				Included
<b>Coast-to-Coast Call Answering</b> <i>Extended live answering from 5:30 AM to 5:00 PM PT</i>	\$19/month				Included
<b>Call Patching</b> <i>Your call is transferred to any phone number in the U.S.</i>	\$9/month				Included
<b>Call Screening</b> <i>Calls are announced. You choose which calls to accept. Must also have Call Patching.</i>	\$19/month				Included
<b>24/7 Access</b> <i>Anytime access to workspaces and meeting rooms</i>	\$49/month				Included
<b>Color Copying, Printing, &amp; Scanning</b> <i>Use our color copier and networked printer</i>	Scan \$0.04 B/W \$0.09 Color \$0.39				200 pages free/month
<b>Online Business Listing</b> <i>Add-on monthly charge to include 20-hours/month for part-time day office, directory listing, and unique suite number.</i>	Mail Plan: \$199 V-Office: \$49 VO Plus \$29				
<b>Portable Phone Number</b> <i>Keep your current or Pac-issued phone number</i>	\$9.95/month				
<b>One Time Set-up Fee</b>		<b>\$49</b>	<b>\$99</b>	<b>\$99</b>	<b>\$99</b>

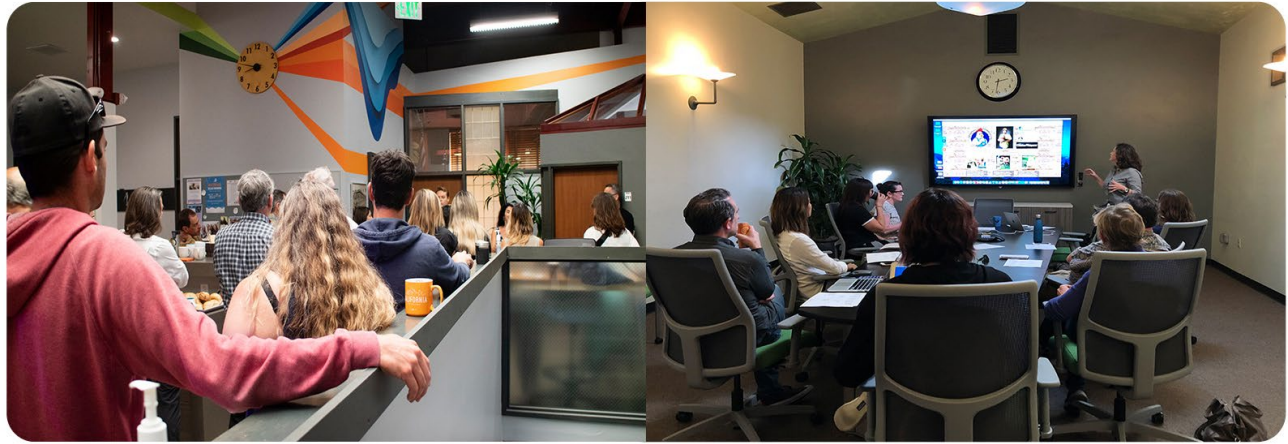
\*Ask us about rates for additional users

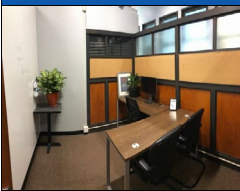


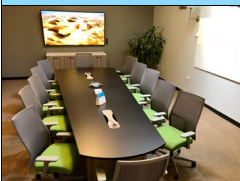
\*\*Includes one company name. Additional company requires separate plans. Additional DBA \$29/mo.

\*\*\*Requires 3-month commitment.

\*\*\*\*Additional charges, such as postage, may apply. Please see our full Administrative Services Price List.

[www.PacificWorkplaces.com](http://www.PacificWorkplaces.com)



		Rates	Capacity
	Guest Day Office	\$30/hr 1 credit*/hr	3 seats
	Open Coworking	\$25/day 2 credits*/day	70 seats
	Cove Meeting Room	\$40/hr 2 credits*/hr	4 seats
	Manresa Meeting Room	\$60/hr 3 credits*/hr	8 seats
	Pacific Boardroom	\$80/hr 4 credits*/hr	20 seats

**SPECIAL DISCOUNT**

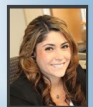
**MONTHLY CONTRACT MEMBERS**

*Overage invoiced at 15% off the hourly rate for all memberships.*

Pacific Touchdown Members get access to all PAC locations!

**PACIFIC WORKPLACES**

Jenn Ribero  
Your Company Name  
User CODE: CTVI PWR RIBE



Ask us how to add-on today!