

ELECTRICAL NOTES

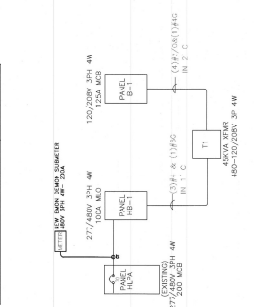
1. ALL WORK SHALL MEET THE REQUIREMENTS OF THE NATIONAL ELECTRICAL CODE AND MEET ALL STATE AND LOCAL CODES.
2. THE CONTRACTOR SHALL USE THE SITE TO FAMILIARIZE HIMSELF WITH THE EXISTING UTILITIES AND RECORDS.
3. ALL WORK SHALL BE COORDINATED WITH THAT OF OTHER TRADES SO AS NOT TO INTERRUPT THE WORK OF OTHER TRADES.
4. SURETY CONTRACTOR SHALL PROVIDE APPROVAL PRIOR TO COMMENCEMENT OF WORK.
5. ALL WORK SHALL BE COORDINATED WITH THE OWNER PRIOR TO COMMENCEMENT OF WORK.
6. ALL WORK SHALL BE IN THE CONCEALED WORK SHALL BE THE "NIC".
7. THE CONTRACTOR SHALL APPLY AND RAY ALL TIES FOR PRIME AND INSPECTION REQUIRED FOR ELECTRICAL WORK.
8. CONTRACTOR SHALL LABEL ALL DEVICES AND UPDATE PANEL SCHEDULES.
9. ALL "SPARE" CIRCUITS SHALL BE STRIPPED BACK TO PAPER PANEL AND LABEL.
10. ALL RECEPTACLE PLATE COVERS SHALL BE COLOR WHITE.
11. RECEPTACLE PLATE COVERS SHALL BE IDENTIFIED BY COLOR AND LABEL.
12. ALL RECEPTACLES SHALL BE COMMERCIAL GRADE HUBBELL #250 OR EQUAL.
13. ALL "TO BE" PANELS SHALL BE RUN WITH SEPARATE NEUTRALS AND INSULATED GROUND.
14. ALL DATA AND TELEPHONE CABLES AND SERVICE INSTALLATIONS TO BE DONE BY OTHERS.
15. ALL EXISTING CIRCUITS SHALL BE TRACED, VERIFIED AND LABELLED TO THE ELECTRIC PANELS.
16. ALL EXISTING CIRCUITS SHALL BE NOTIFIED IN A NEAR WORKSHOP LINE MANNER. RUNNING IN THE SAME TRUNKING SHALL BE IDENTIFIED BY COLOR AND LABELLED.
17. INSTANT NEW LIGHTING CIRCUITS FROM EXISTING 120V/208V PANELS LOCATED IN ELECTRICAL RM. TO NEW UNFINISHED OVERHEAD LIGHT FIXTURES.
18. MAKE ALL NEW AND RELOCATED LIGHTS, NIGHT JOBS (NJ) AND EMERGENCY LIGHTS (EM) TO 120V UNFINISHED OVERHEAD LIGHT FIXTURES.
19. THE ELECTRICAL CONTRACTOR SHALL BE RESPONSIBLE FOR THE WORK.
20. THE ELECTRICAL CONTRACTOR SHALL BE RESPONSIBLE FOR THE WORK.
21. TELEPHONE WALLS - INSTALL UTILITY BOX WITH PLASTER AND PULL STRINGS TO CEILING.
22. ALL DATA AND TELEPHONE CABLES AND SERVICE INSTALLATIONS TO BE DONE BY OTHERS.
23. PANEL BOARDS
 - A. PANELBOARDS SHALL BE OF THE DEAD FRONT CIRCUIT BREAKER TYPE WITH COPPER BUSSES. 75M SHALL BE INSTALLED TO TOP OF THE RACK. ONE ON THE TOP AND ONE ON THE BOTTOM.
 - B. CIRCUIT BREAKERS SHALL BE OF THE RIGID LOGE BOX ON THE TOP FOR THE MAIN.
 - C. IDENTIFY ALL CIRCUITS, EXISTING AND NEW.
 - D. PANELBOARDS SHALL BE IDENTIFIED WITH ITS NAME EMPLOYED ON A SCREW FASTENER. BACKLITE IDENTIFICATION SHALL BE 1/2" DIA. COPPER INCLUDING INCLUDING NEUTRAL AND GROUND BUSES.
 - E. PANELBOARDS SHALL BE OF THE RIGID LOGE BOX ON THE TOP FOR THE MAIN.
24. DEMOLITION
 - A. ALL DEMOLITION WORK AS INDICATED ON THE DRAWINGS SHALL BE PERFORMED BY THE ELECTRICAL CONTRACTOR.
 - B. ALL EXISTING LIGHTING FIXTURES, SWITCHES, RECEPTACLES, AND REMOVED AREAS SHALL BE DEMOLISHED UNLESS OTHERWISE NOTED OR INDICATED ON THE DRAWINGS. ONE SHALL BE MAINTAINED FOR THE MAIN IN THE ELECTRICAL RM. THE ELECTRICAL CONTRACTOR SHALL BE RESPONSIBLE FOR THE DEMOLITION WORK TO MAINTAIN THE SYSTEMS AS SHOWN ON THE DRAWINGS.
 - C. CARE SHALL BE TAKEN TO MAINTAIN EXISTING CREEPER, BRANCH CIRCUIT AND ANALOG SYSTEMS WIRING. ALL EXISTING CONDUITS SHALL BE REUSED, UNLESS OTHERWISE NOTED ON THE DRAWINGS. THE CONTRACTOR SHALL BE RESPONSIBLE FOR THE DEMOLITION OF THE WIRING SYSTEMS TO REMAIN.
 - D. EXISTING CONDUITS AND CABLES RUN ABOVE CEILING AND IN METAL RACEWAY AND NOT TYPICAL GATES, SHALL BE DEMOLISHED. REMOVED AND CABLES RUN ABOVE CEILING AND IN METAL RACEWAY, STATE AND JUNCTION BOXES, CABLE TRAYS AND PULL BOXES MAY BE REUSED WHEREVER POSSIBLE.
 - E. EXISTING FEEDER, BRANCH CIRCUIT AND AUXILIARY SYSTEM (COURT, FIRE ALARM, CLOCK, ETC) RACEWAYS, WIRING, AND JUNCTION BOXES SHALL BE DEMOLISHED UNLESS OTHERWISE NOTED ON THE DRAWINGS.
 - F. RACEWAY SYSTEMS THAT ARE TO BE RELOCATED, THE RACEWAY SYSTEM SHALL BE REPAIRED AND/OR REPLACED. THE CONTRACTOR SHALL BE RESPONSIBLE FOR THE DEMOLITION OF THE RACEWAY SYSTEMS THAT ARE TO BE RELOCATED.
 - G. ALL EXISTING RACEWAYS ARE TO BE RELOCATED TO THE NEW RACEWAY SYSTEMS. THE CONTRACTOR SHALL BE RESPONSIBLE FOR THE DEMOLITION OF THE RACEWAYS THAT ARE TO BE RELOCATED.
 - H. ALL UNUSED CIRCUIT SHALL BE STRIPPED BACK TO PAPER PANEL AND LABEL AS "SPARE" IN THE PANELBOARD.

LEGEND

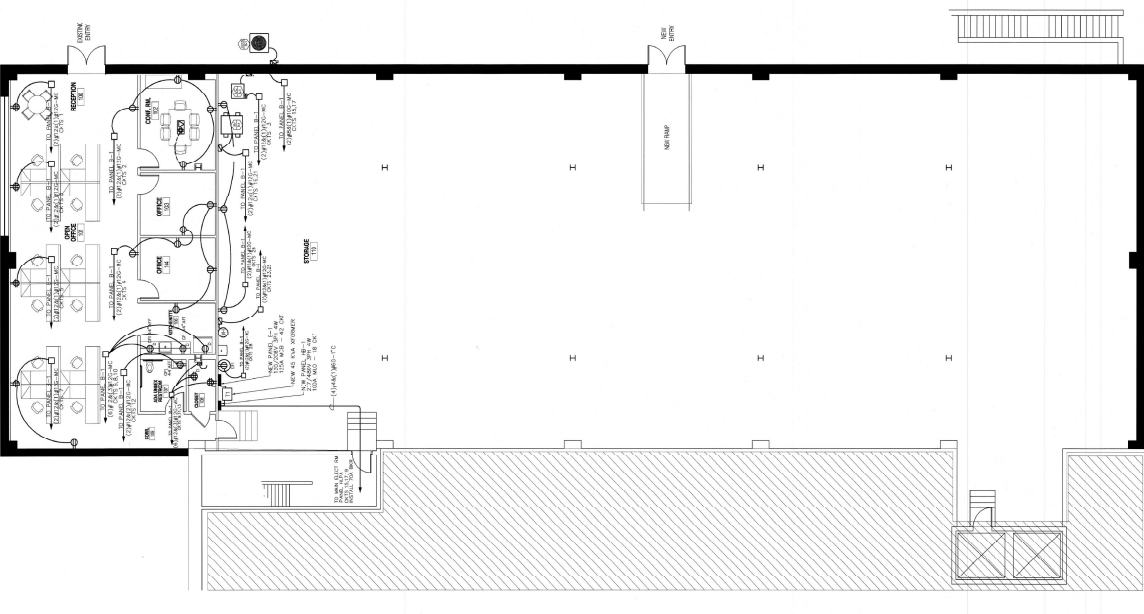
- GAS RECEPTACLE, 120V, 20A, NEW
- RECEPTACLE, 120V, 50A, NEW
- DIMPLEX RECEPTACLE, 120V, 20A, EXISTING
- DIMPLEX RECEPTACLE, 120V, 20A, EXISTING
- RECEPTACLE, 208V, 2-PHASE, 40A, NEW
- WALL MOUNT BOX (SEE NOTE 20)
- FLOOR RECESSED POWER AND TELE DATA BOX
- WIRELESS KEY-FIGHT TOUCH-TONE DEVICE
- PARTITION EASE FEEL (SEE DETAIL "A")
- PARTITION POWER POLE MOUNT BOX ABOVE
- NEW POWER PANEL
- DISCONNECT SWITCH
- EXHAUST FAN

PANEL NO.	DESCRIPTION	CIRCUITS	LOAD	LOCATION	REMARKS
1	MAIN SERVICE	480V, 3PH, 4W	6000	EL. RM.	NEW
2	OFFICE	120V, 1PH, 15A	1200	OFFICE	NEW
3	RECEPTION	120V, 1PH, 15A	1200	RECEPTION	NEW
4	CONFERENCE	120V, 1PH, 15A	1200	CONFERENCE	NEW
5	RESTROOM	120V, 1PH, 15A	1200	RESTROOM	NEW
6	STORAGE AREA	120V, 1PH, 15A	1200	STORAGE AREA	NEW
7	STORAGE AREA	120V, 1PH, 15A	1200	STORAGE AREA	NEW
8	STORAGE AREA	120V, 1PH, 15A	1200	STORAGE AREA	NEW
9	STORAGE AREA	120V, 1PH, 15A	1200	STORAGE AREA	NEW
10	STORAGE AREA	120V, 1PH, 15A	1200	STORAGE AREA	NEW
11	STORAGE AREA	120V, 1PH, 15A	1200	STORAGE AREA	NEW
12	STORAGE AREA	120V, 1PH, 15A	1200	STORAGE AREA	NEW
13	STORAGE AREA	120V, 1PH, 15A	1200	STORAGE AREA	NEW
14	STORAGE AREA	120V, 1PH, 15A	1200	STORAGE AREA	NEW
15	STORAGE AREA	120V, 1PH, 15A	1200	STORAGE AREA	NEW
16	STORAGE AREA	120V, 1PH, 15A	1200	STORAGE AREA	NEW
17	STORAGE AREA	120V, 1PH, 15A	1200	STORAGE AREA	NEW
18	STORAGE AREA	120V, 1PH, 15A	1200	STORAGE AREA	NEW
19	STORAGE AREA	120V, 1PH, 15A	1200	STORAGE AREA	NEW
20	STORAGE AREA	120V, 1PH, 15A	1200	STORAGE AREA	NEW
21	STORAGE AREA	120V, 1PH, 15A	1200	STORAGE AREA	NEW
22	STORAGE AREA	120V, 1PH, 15A	1200	STORAGE AREA	NEW
23	STORAGE AREA	120V, 1PH, 15A	1200	STORAGE AREA	NEW
24	STORAGE AREA	120V, 1PH, 15A	1200	STORAGE AREA	NEW
25	STORAGE AREA	120V, 1PH, 15A	1200	STORAGE AREA	NEW
26	STORAGE AREA	120V, 1PH, 15A	1200	STORAGE AREA	NEW
27	STORAGE AREA	120V, 1PH, 15A	1200	STORAGE AREA	NEW
28	STORAGE AREA	120V, 1PH, 15A	1200	STORAGE AREA	NEW
29	STORAGE AREA	120V, 1PH, 15A	1200	STORAGE AREA	NEW
30	STORAGE AREA	120V, 1PH, 15A	1200	STORAGE AREA	NEW
31	STORAGE AREA	120V, 1PH, 15A	1200	STORAGE AREA	NEW
32	STORAGE AREA	120V, 1PH, 15A	1200	STORAGE AREA	NEW
33	STORAGE AREA	120V, 1PH, 15A	1200	STORAGE AREA	NEW
34	STORAGE AREA	120V, 1PH, 15A	1200	STORAGE AREA	NEW
35	STORAGE AREA	120V, 1PH, 15A	1200	STORAGE AREA	NEW
36	STORAGE AREA	120V, 1PH, 15A	1200	STORAGE AREA	NEW
37	STORAGE AREA	120V, 1PH, 15A	1200	STORAGE AREA	NEW
38	STORAGE AREA	120V, 1PH, 15A	1200	STORAGE AREA	NEW
39	STORAGE AREA	120V, 1PH, 15A	1200	STORAGE AREA	NEW
40	STORAGE AREA	120V, 1PH, 15A	1200	STORAGE AREA	NEW
41	STORAGE AREA	120V, 1PH, 15A	1200	STORAGE AREA	NEW
42	STORAGE AREA	120V, 1PH, 15A	1200	STORAGE AREA	NEW
43	STORAGE AREA	120V, 1PH, 15A	1200	STORAGE AREA	NEW
44	STORAGE AREA	120V, 1PH, 15A	1200	STORAGE AREA	NEW
45	STORAGE AREA	120V, 1PH, 15A	1200	STORAGE AREA	NEW
46	STORAGE AREA	120V, 1PH, 15A	1200	STORAGE AREA	NEW
47	STORAGE AREA	120V, 1PH, 15A	1200	STORAGE AREA	NEW
48	STORAGE AREA	120V, 1PH, 15A	1200	STORAGE AREA	NEW
49	STORAGE AREA	120V, 1PH, 15A	1200	STORAGE AREA	NEW
50	STORAGE AREA	120V, 1PH, 15A	1200	STORAGE AREA	NEW

PANEL NO.	DESCRIPTION	CIRCUITS	LOAD	LOCATION	REMARKS
1	STORAGE AREA	120V, 1PH, 15A	1200	STORAGE AREA	NEW
2	STORAGE AREA	120V, 1PH, 15A	1200	STORAGE AREA	NEW
3	STORAGE AREA	120V, 1PH, 15A	1200	STORAGE AREA	NEW
4	STORAGE AREA	120V, 1PH, 15A	1200	STORAGE AREA	NEW
5	STORAGE AREA	120V, 1PH, 15A	1200	STORAGE AREA	NEW
6	STORAGE AREA	120V, 1PH, 15A	1200	STORAGE AREA	NEW
7	STORAGE AREA	120V, 1PH, 15A	1200	STORAGE AREA	NEW
8	STORAGE AREA	120V, 1PH, 15A	1200	STORAGE AREA	NEW
9	STORAGE AREA	120V, 1PH, 15A	1200	STORAGE AREA	NEW
10	STORAGE AREA	120V, 1PH, 15A	1200	STORAGE AREA	NEW
11	STORAGE AREA	120V, 1PH, 15A	1200	STORAGE AREA	NEW
12	STORAGE AREA	120V, 1PH, 15A	1200	STORAGE AREA	NEW
13	STORAGE AREA	120V, 1PH, 15A	1200	STORAGE AREA	NEW
14	STORAGE AREA	120V, 1PH, 15A	1200	STORAGE AREA	NEW
15	STORAGE AREA	120V, 1PH, 15A	1200	STORAGE AREA	NEW
16	STORAGE AREA	120V, 1PH, 15A	1200	STORAGE AREA	NEW
17	STORAGE AREA	120V, 1PH, 15A	1200	STORAGE AREA	NEW
18	STORAGE AREA	120V, 1PH, 15A	1200	STORAGE AREA	NEW
19	STORAGE AREA	120V, 1PH, 15A	1200	STORAGE AREA	NEW
20	STORAGE AREA	120V, 1PH, 15A	1200	STORAGE AREA	NEW
21	STORAGE AREA	120V, 1PH, 15A	1200	STORAGE AREA	NEW
22	STORAGE AREA	120V, 1PH, 15A	1200	STORAGE AREA	NEW
23	STORAGE AREA	120V, 1PH, 15A	1200	STORAGE AREA	NEW
24	STORAGE AREA	120V, 1PH, 15A	1200	STORAGE AREA	NEW
25	STORAGE AREA	120V, 1PH, 15A	1200	STORAGE AREA	NEW
26	STORAGE AREA	120V, 1PH, 15A	1200	STORAGE AREA	NEW
27	STORAGE AREA	120V, 1PH, 15A	1200	STORAGE AREA	NEW
28	STORAGE AREA	120V, 1PH, 15A	1200	STORAGE AREA	NEW
29	STORAGE AREA	120V, 1PH, 15A	1200	STORAGE AREA	NEW
30	STORAGE AREA	120V, 1PH, 15A	1200	STORAGE AREA	NEW
31	STORAGE AREA	120V, 1PH, 15A	1200	STORAGE AREA	NEW
32	STORAGE AREA	120V, 1PH, 15A	1200	STORAGE AREA	NEW
33	STORAGE AREA	120V, 1PH, 15A	1200	STORAGE AREA	NEW
34	STORAGE AREA	120V, 1PH, 15A	1200	STORAGE AREA	NEW
35	STORAGE AREA	120V, 1PH, 15A	1200	STORAGE AREA	NEW
36	STORAGE AREA	120V, 1PH, 15A	1200	STORAGE AREA	NEW
37	STORAGE AREA	120V, 1PH, 15A	1200	STORAGE AREA	NEW
38	STORAGE AREA	120V, 1PH, 15A	1200	STORAGE AREA	NEW
39	STORAGE AREA	120V, 1PH, 15A	1200	STORAGE AREA	NEW
40	STORAGE AREA	120V, 1PH, 15A	1200	STORAGE AREA	NEW
41	STORAGE AREA	120V, 1PH, 15A	1200	STORAGE AREA	NEW
42	STORAGE AREA	120V, 1PH, 15A	1200	STORAGE AREA	NEW
43	STORAGE AREA	120V, 1PH, 15A	1200	STORAGE AREA	NEW
44	STORAGE AREA	120V, 1PH, 15A	1200	STORAGE AREA	NEW
45	STORAGE AREA	120V, 1PH, 15A	1200	STORAGE AREA	NEW
46	STORAGE AREA	120V, 1PH, 15A	1200	STORAGE AREA	NEW
47	STORAGE AREA	120V, 1PH, 15A	1200	STORAGE AREA	NEW
48	STORAGE AREA	120V, 1PH, 15A	1200	STORAGE AREA	NEW
49	STORAGE AREA	120V, 1PH, 15A	1200	STORAGE AREA	NEW
50	STORAGE AREA	120V, 1PH, 15A	1200	STORAGE AREA	NEW



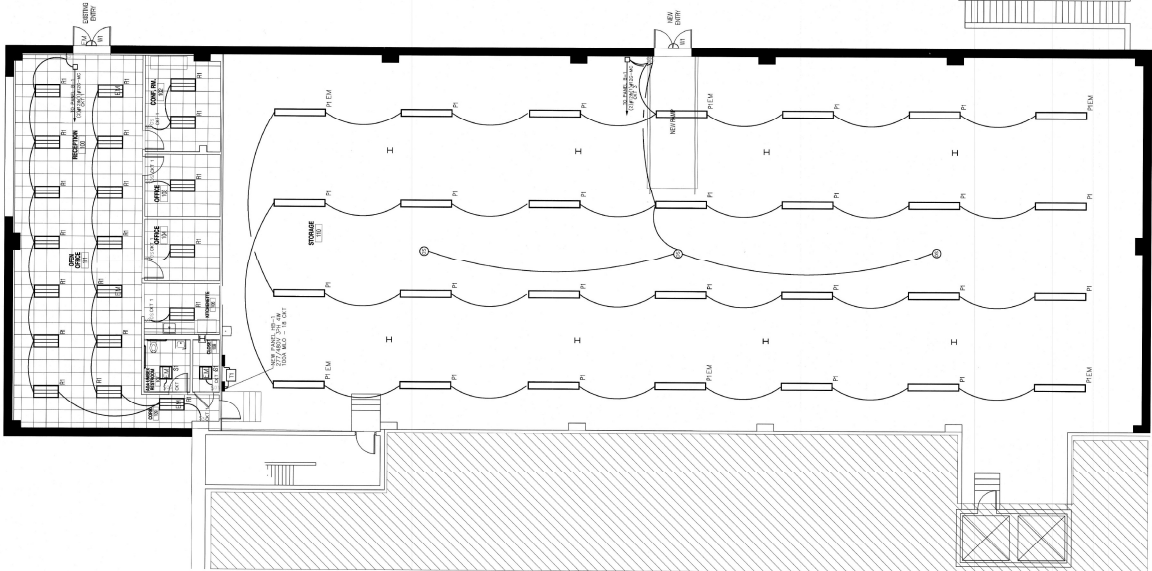
PROPOSED - ONE LINE DIAGRAM
NOT TO SCALE
BASEMENT LEVEL ELECTRICAL PLAN
SCALE 1/8"=1'-0"
0 32' 64'



Client: KS PARTNERS
Address: One Highwood, Burnstead Level
Tewksbury, Ma



PROJECT NUMBER:
DATE: 05/13/2018
Contractor/Client/Owner:
REVISIONS:
SCALE:
DRAWING NAME:
BASEMENT LEVEL ELECTRICAL PLAN
DRAWING NUMBER: E1



BASEMENT LEVEL
NEW LIFTING PLAN
SCALE 1/8"=1'-0"

LEGEND - LIFE SAFETY

- ALL DRIVES ARE NEW UNLESS OTHERWISE SPECIFIED.
E - INDICATES EXITING DOOR TO REMAIN
- EXIT SIGN
 - EXIT SIGN WITH DIRECTIONAL ARROW
 - ADA APPROVED STROBE UNIT 50 DB MIN
 - ADA APPROVED SMALL AUDIO STROBE UNIT 75/75 DB MIN
 - ADA APPROVED CEILING AUDIO STROBE UNIT 75/75 DB MIN
 - ADRESSABLE PULL STATION
 - PHOTOELECTRIC SMOKE DETECTOR
 - HEAT DETECTOR MOUNTED ON CEILING DECK
 - REMOTE LED SMOKE DETECTOR INDICATOR
 - DOOR RELAY MODULE FOR DOOR SECURITY
 - NEW SPRINKLER TAMPER SWITCH
 - NEW SPRINKLER FLOW SWITCH
 - REMOTE LED INDICATOR

LEGEND - LIGHTING

- ALL LIGHTING IS NEW UNLESS OTHERWISE INDICATED.
ALL LAMPS SHALL BE LED
- 2x4 LED DIRECT/INDIRECT FIXTURE
 - 2x4 LED DIRECT/INDIRECT FIXTURE WITH EMERGENCY BATTERY BALLAST
 - 2x2 LED DIRECT/INDIRECT FIXTURE WITH EMERGENCY BATTERY BALLAST
 - 2x2 LED DIRECT/INDIRECT FIXTURE WITH EMERGENCY BATTERY BALLAST
 - OUTDOOR COMPACT LED WALL SCENE W/ DIMMER BACKUP
 - SINGLE POLE LIGHT SWITCH
 - THREE WAY LIGHT SWITCH
 - EM EMERGENCY/NIGHT LIGHT ON UNWITNESSED CIRCUIT
 - DIMMER SWITCH
 - DOUBLE METAL RACKWAY
 - OCCUPANCY SENSOR WALL MOUNTED
 - AVIT STOPPER MODEL DM-100
 - OCCUPANCY SENSOR CEILING MOUNTED
 - AVIT STOPPER MODEL DT-300

LIFE SAFETY DEVICE SCHEDULE

TYPE	DESCRIPTION	MANUFACTURER	QUANTITY	DATE
ES	EXIT SIGN	EDS-2-RMR-EL-W6	152/777	1,2
ES	EXIT SIGN WITH DIRECTIONAL ARROW	EDS-2-RMR-EL-W6	152/777	1,2
AS	ADA APPROVED STROBE UNIT	SEMIANS GENIUS PROTRONICS MATCH EXISTING	24	
AS	ADA APPROVED SMALL AUDIO STROBE UNIT	SEMIANS GENIUS PROTRONICS MATCH EXISTING	24	
AS	ADA APPROVED CEILING AUDIO STROBE UNIT	SEMIANS GENIUS PROTRONICS MATCH EXISTING	24	
SD	SMOKE DETECTOR	SEMIANS GENIUS PROTRONICS MATCH EXISTING	24	
SD	HEAT DETECTOR	SEMIANS GENIUS PROTRONICS MATCH EXISTING	24	
SD	SMOKE DETECTOR INDICATOR	SEMIANS GENIUS PROTRONICS MATCH EXISTING	24	
SD	HEAT DETECTOR INDICATOR	SEMIANS GENIUS PROTRONICS MATCH EXISTING	24	
SD	DOOR RELAY MODULE	SEMIANS GENIUS PROTRONICS MATCH EXISTING	24	
SD	SPRINKLER TAMPER SWITCH	SEMIANS GENIUS PROTRONICS MATCH EXISTING	24	
SD	SPRINKLER FLOW SWITCH	SEMIANS GENIUS PROTRONICS MATCH EXISTING	24	
SD	REMOTE LED INDICATOR	SEMIANS GENIUS PROTRONICS MATCH EXISTING	24	

LIGHTING FIXTURE SCHEDULE

TYPE	DESCRIPTION	MANUFACTURER	QUANTITY	DATE
R1	2x4 LED DIRECT/INDIRECT	LITHONIA	277	56
R2	2x4 LED DIRECT/INDIRECT	LITHONIA	277	56
R3	2x4 LED DIRECT/INDIRECT	LITHONIA	277	56
R4	2x4 LED DIRECT/INDIRECT	LITHONIA	277	56
R5	2x4 LED DIRECT/INDIRECT	LITHONIA	277	56
R6	2x4 LED DIRECT/INDIRECT	LITHONIA	277	56
R7	2x4 LED DIRECT/INDIRECT	LITHONIA	277	56
R8	2x4 LED DIRECT/INDIRECT	LITHONIA	277	56
R9	2x4 LED DIRECT/INDIRECT	LITHONIA	277	56
R10	2x4 LED DIRECT/INDIRECT	LITHONIA	277	56
R11	2x4 LED DIRECT/INDIRECT	LITHONIA	277	56
R12	2x4 LED DIRECT/INDIRECT	LITHONIA	277	56
R13	2x4 LED DIRECT/INDIRECT	LITHONIA	277	56
R14	2x4 LED DIRECT/INDIRECT	LITHONIA	277	56
R15	2x4 LED DIRECT/INDIRECT	LITHONIA	277	56
R16	2x4 LED DIRECT/INDIRECT	LITHONIA	277	56
R17	2x4 LED DIRECT/INDIRECT	LITHONIA	277	56
R18	2x4 LED DIRECT/INDIRECT	LITHONIA	277	56
R19	2x4 LED DIRECT/INDIRECT	LITHONIA	277	56
R20	2x4 LED DIRECT/INDIRECT	LITHONIA	277	56
R21	2x4 LED DIRECT/INDIRECT	LITHONIA	277	56
R22	2x4 LED DIRECT/INDIRECT	LITHONIA	277	56
R23	2x4 LED DIRECT/INDIRECT	LITHONIA	277	56
R24	2x4 LED DIRECT/INDIRECT	LITHONIA	277	56
R25	2x4 LED DIRECT/INDIRECT	LITHONIA	277	56
R26	2x4 LED DIRECT/INDIRECT	LITHONIA	277	56
R27	2x4 LED DIRECT/INDIRECT	LITHONIA	277	56
R28	2x4 LED DIRECT/INDIRECT	LITHONIA	277	56
R29	2x4 LED DIRECT/INDIRECT	LITHONIA	277	56
R30	2x4 LED DIRECT/INDIRECT	LITHONIA	277	56
R31	2x4 LED DIRECT/INDIRECT	LITHONIA	277	56
R32	2x4 LED DIRECT/INDIRECT	LITHONIA	277	56
R33	2x4 LED DIRECT/INDIRECT	LITHONIA	277	56
R34	2x4 LED DIRECT/INDIRECT	LITHONIA	277	56
R35	2x4 LED DIRECT/INDIRECT	LITHONIA	277	56
R36	2x4 LED DIRECT/INDIRECT	LITHONIA	277	56
R37	2x4 LED DIRECT/INDIRECT	LITHONIA	277	56
R38	2x4 LED DIRECT/INDIRECT	LITHONIA	277	56
R39	2x4 LED DIRECT/INDIRECT	LITHONIA	277	56
R40	2x4 LED DIRECT/INDIRECT	LITHONIA	277	56
R41	2x4 LED DIRECT/INDIRECT	LITHONIA	277	56
R42	2x4 LED DIRECT/INDIRECT	LITHONIA	277	56
R43	2x4 LED DIRECT/INDIRECT	LITHONIA	277	56
R44	2x4 LED DIRECT/INDIRECT	LITHONIA	277	56
R45	2x4 LED DIRECT/INDIRECT	LITHONIA	277	56
R46	2x4 LED DIRECT/INDIRECT	LITHONIA	277	56
R47	2x4 LED DIRECT/INDIRECT	LITHONIA	277	56
R48	2x4 LED DIRECT/INDIRECT	LITHONIA	277	56
R49	2x4 LED DIRECT/INDIRECT	LITHONIA	277	56
R50	2x4 LED DIRECT/INDIRECT	LITHONIA	277	56
R51	2x4 LED DIRECT/INDIRECT	LITHONIA	277	56
R52	2x4 LED DIRECT/INDIRECT	LITHONIA	277	56
R53	2x4 LED DIRECT/INDIRECT	LITHONIA	277	56
R54	2x4 LED DIRECT/INDIRECT	LITHONIA	277	56
R55	2x4 LED DIRECT/INDIRECT	LITHONIA	277	56
R56	2x4 LED DIRECT/INDIRECT	LITHONIA	277	56
R57	2x4 LED DIRECT/INDIRECT	LITHONIA	277	56
R58	2x4 LED DIRECT/INDIRECT	LITHONIA	277	56
R59	2x4 LED DIRECT/INDIRECT	LITHONIA	277	56
R60	2x4 LED DIRECT/INDIRECT	LITHONIA	277	56
R61	2x4 LED DIRECT/INDIRECT	LITHONIA	277	56
R62	2x4 LED DIRECT/INDIRECT	LITHONIA	277	56
R63	2x4 LED DIRECT/INDIRECT	LITHONIA	277	56
R64	2x4 LED DIRECT/INDIRECT	LITHONIA	277	56
R65	2x4 LED DIRECT/INDIRECT	LITHONIA	277	56
R66	2x4 LED DIRECT/INDIRECT	LITHONIA	277	56
R67	2x4 LED DIRECT/INDIRECT	LITHONIA	277	56
R68	2x4 LED DIRECT/INDIRECT	LITHONIA	277	56
R69	2x4 LED DIRECT/INDIRECT	LITHONIA	277	56
R70	2x4 LED DIRECT/INDIRECT	LITHONIA	277	56
R71	2x4 LED DIRECT/INDIRECT	LITHONIA	277	56
R72	2x4 LED DIRECT/INDIRECT	LITHONIA	277	56
R73	2x4 LED DIRECT/INDIRECT	LITHONIA	277	56
R74	2x4 LED DIRECT/INDIRECT	LITHONIA	277	56
R75	2x4 LED DIRECT/INDIRECT	LITHONIA	277	56
R76	2x4 LED DIRECT/INDIRECT	LITHONIA	277	56
R77	2x4 LED DIRECT/INDIRECT	LITHONIA	277	56
R78	2x4 LED DIRECT/INDIRECT	LITHONIA	277	56
R79	2x4 LED DIRECT/INDIRECT	LITHONIA	277	56
R80	2x4 LED DIRECT/INDIRECT	LITHONIA	277	56
R81	2x4 LED DIRECT/INDIRECT	LITHONIA	277	56
R82	2x4 LED DIRECT/INDIRECT	LITHONIA	277	56
R83	2x4 LED DIRECT/INDIRECT	LITHONIA	277	56
R84	2x4 LED DIRECT/INDIRECT	LITHONIA	277	56
R85	2x4 LED DIRECT/INDIRECT	LITHONIA	277	56
R86	2x4 LED DIRECT/INDIRECT	LITHONIA	277	56
R87	2x4 LED DIRECT/INDIRECT	LITHONIA	277	56
R88	2x4 LED DIRECT/INDIRECT	LITHONIA	277	56
R89	2x4 LED DIRECT/INDIRECT	LITHONIA	277	56
R90	2x4 LED DIRECT/INDIRECT	LITHONIA	277	56
R91	2x4 LED DIRECT/INDIRECT	LITHONIA	277	56
R92	2x4 LED DIRECT/INDIRECT	LITHONIA	277	56
R93	2x4 LED DIRECT/INDIRECT	LITHONIA	277	56
R94	2x4 LED DIRECT/INDIRECT	LITHONIA	277	56
R95	2x4 LED DIRECT/INDIRECT	LITHONIA	277	56
R96	2x4 LED DIRECT/INDIRECT	LITHONIA	277	56
R97	2x4 LED DIRECT/INDIRECT	LITHONIA	277	56
R98	2x4 LED DIRECT/INDIRECT	LITHONIA	277	56
R99	2x4 LED DIRECT/INDIRECT	LITHONIA	277	56
R100	2x4 LED DIRECT/INDIRECT	LITHONIA	277	56

BASEMENT LEVEL
LIFE SAFETY PLAN
SCALE 1/8"=1'-0"