

# 1625

THE ALAMEDA

SAN JOSE, CA 95126

± 2,386 RSF

EXCLUSIVE GROUND FLOOR  
SUITE WITH PREMIUM  
SIGNAGE

ADDITIONAL OFFICE SUITES AVAILABLE



**Kevin Heravi**

📞 408-457-8800

✉ kevin@healthmedrealty.com

📄 Lic. 01875398

**Jeff Petulla**

📞 408-888-4859

✉ jeff@healthmedrealty.com

📄 Lic. 00852399



**HealthMed Realty**

260 Los Gatos-Saratoga Rd.  
Los Gatos, CA 95030 Lic.  
01902032 | 408.217.6000

[www.healthmedrealty.com](http://www.healthmedrealty.com)

## PROPERTY SUMMARY

Located at **1625 The Alameda** in San Jose, this premier high-rise building offers a prominent ground floor suite totaling 2,386 square feet, with additional suites available on the upper floors. Known for its notable tenants and prime location, the building features ample on-site parking, high-end finishes, and unrivaled signage, making it a sought-after address for businesses.

## SIGNAGE OPPORTUNITIES

The ground floor suite offers exceptional signage opportunities, including a **monument sign**, **building entrance sign**, and a highly visible **eyebrow sign**, making it ideal for businesses seeking high visibility and brand exposure. Previously occupied by First Republic Bank, the ground floor space is designed to accommodate a variety of business needs.

## LOCATION HIGHLIGHTS

The strategic location offers easy access to key San Jose destinations, including Downtown San Jose and the SAP Center. The property is conveniently located near major highways and public transportation, providing seamless connectivity to the broader Silicon Valley area. Additionally, the surrounding area boasts a variety of dining and entertainment options, further enhancing the appeal of this prime leasing opportunity.



## AVAILABLE SPACE - GROUND FLOOR

- Suite 100: ± 2,386 RSF

## LEASE RATE

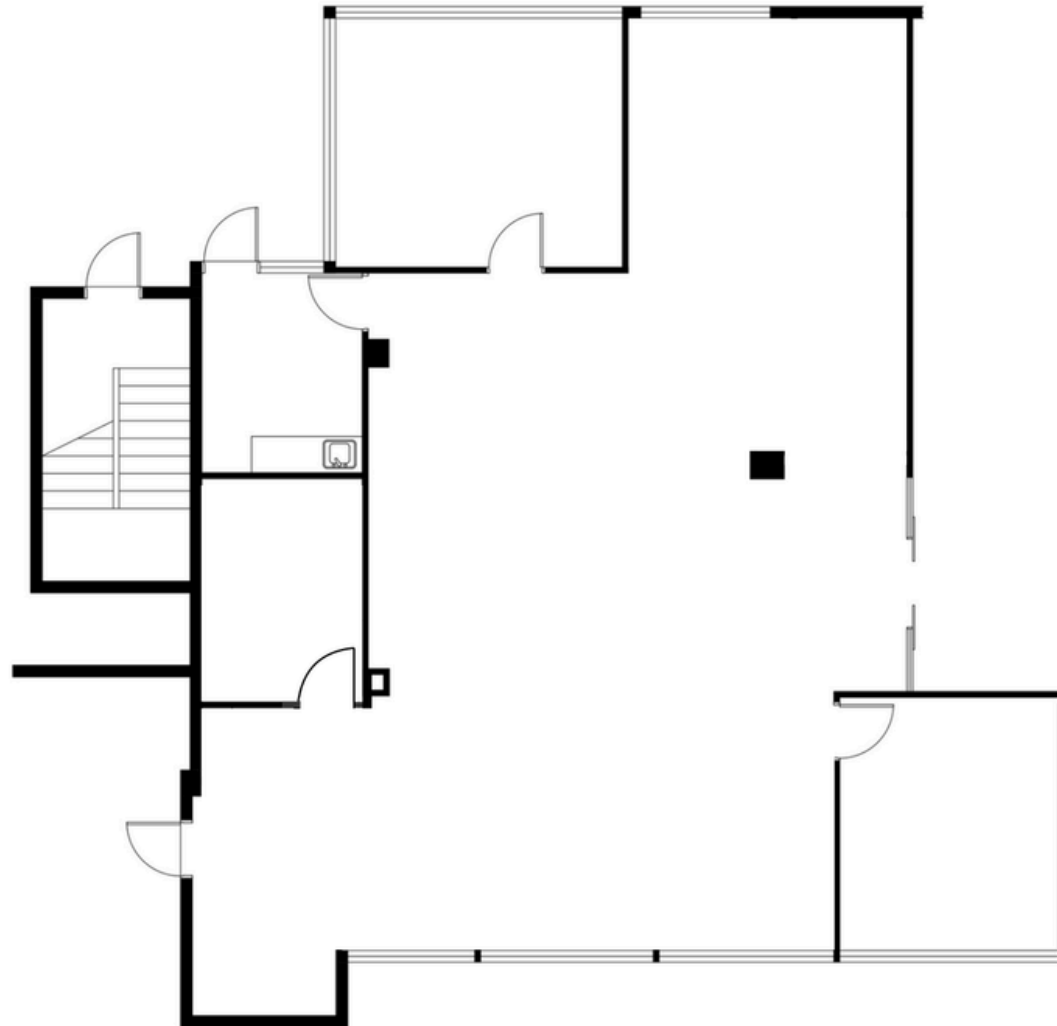
- Contact Broker for Pricing

## SIGNAGE OPPORTUNITY

- Monument Sign
- Building Entrance Sign
- Building Eyebrow Sign



# SUITE 100 - ± 2,386 RSF

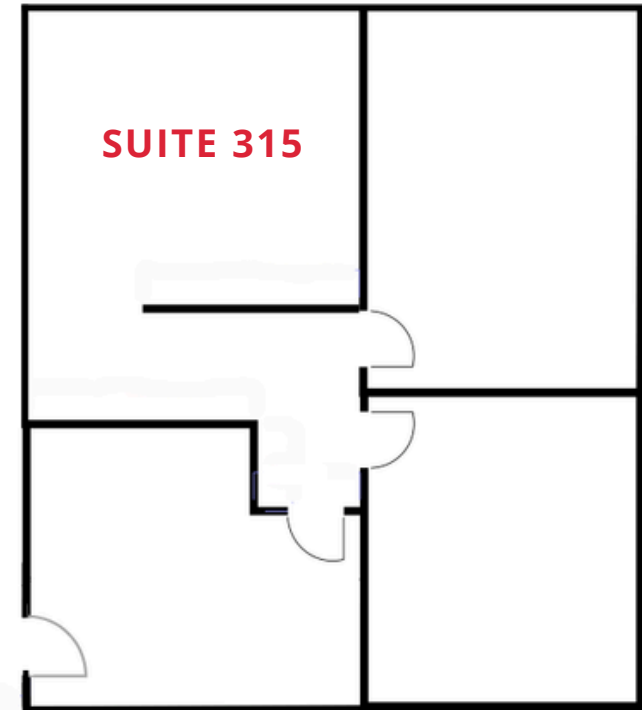
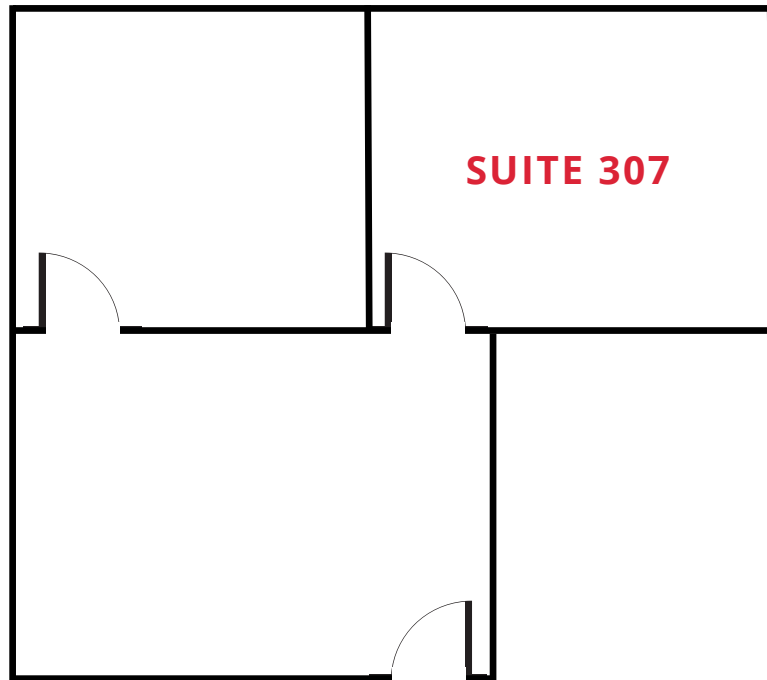


*DRAWINGS NOT TO SCALE*

## ADDITIONAL OFFICE SUITES AVAILABLE

- **Suite 203:** ± 300 RSF
- **Suite 307:** ± 600 RSF
- **Suite 315:** ± 1,005 RSF

*Contact Broker for Pricing*

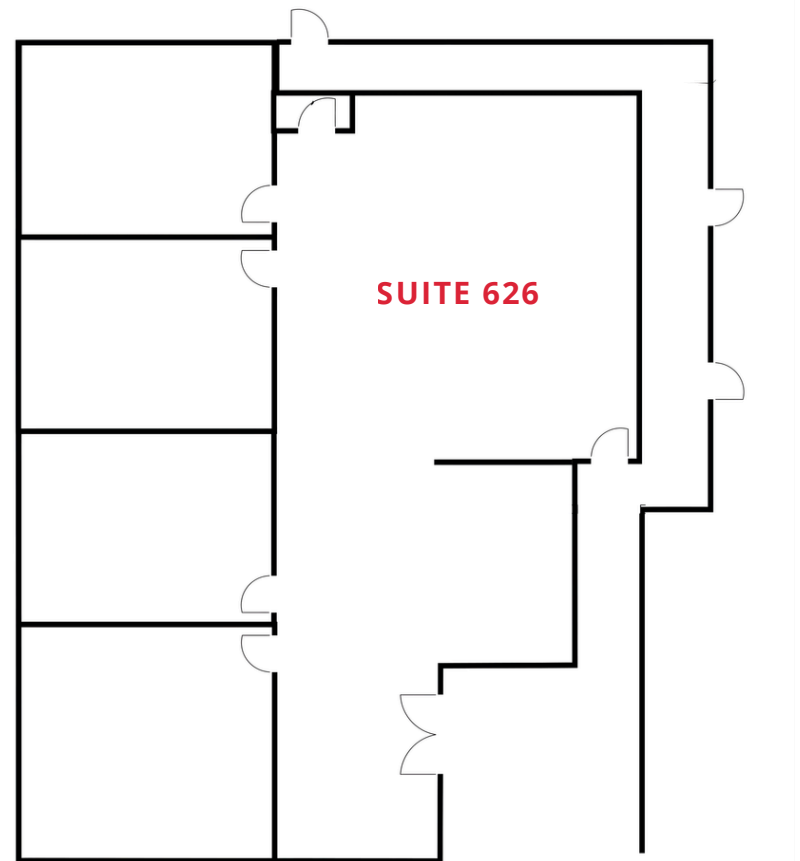
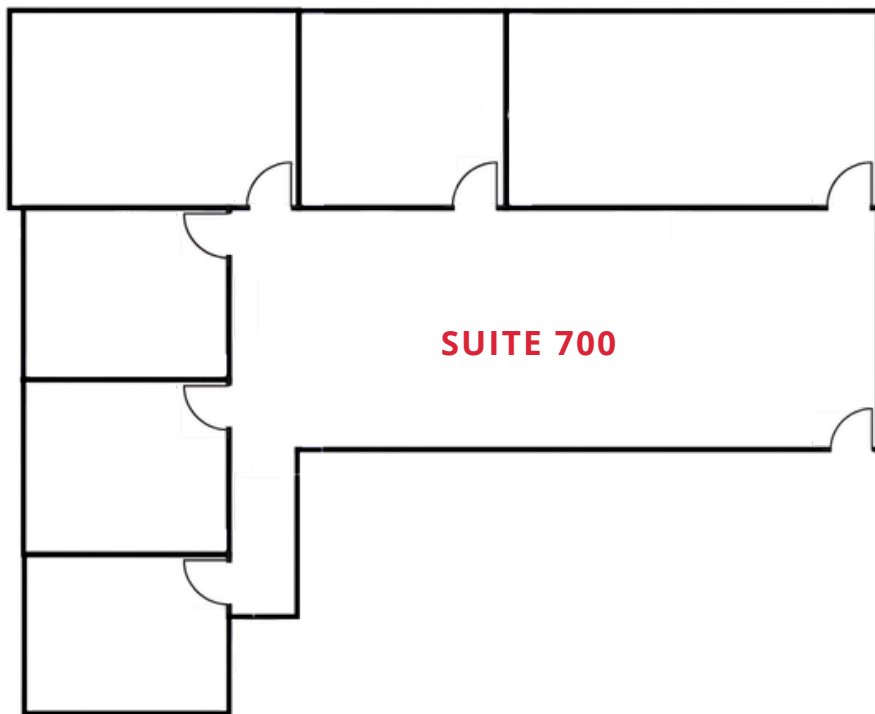


*DRAWINGS NOT TO SCALE*

## ADDITIONAL OFFICE SUITES AVAILABLE

- **Suite 624:** ± 350 RSF
- **Suite 626:** ± 1,750 RSF
- **Suite 700:** ± 1,540 RSF
- **Suite 712:** ± 325 RSF

*Contact Broker for Pricing*



*DRAWINGS NOT TO SCALE*

# PARKING

- Ample Onsite Parking
- Free of Charge
- Easy Access





# HealthMedRealty

## Kevin Heravi

☎ 408-457-8800

✉ kevin@healthmedrealty.com

📄 Lic. 01875398

## Jeff Petulla

☎ 408-888-4859

✉ jeff@healthmedrealty.com

📄 Lic. 00852399

260 Los Gatos-Saratoga Rd.  
Los Gatos, CA 95030  
Lic. 01902032 | 408.217.6000

[www.healthmedrealty.com](http://www.healthmedrealty.com)



SCAN TO VIEW  
PROPERTY VIDEO

# 1625

**THE ALAMEDA**

**SAN JOSE, CA 95126**

