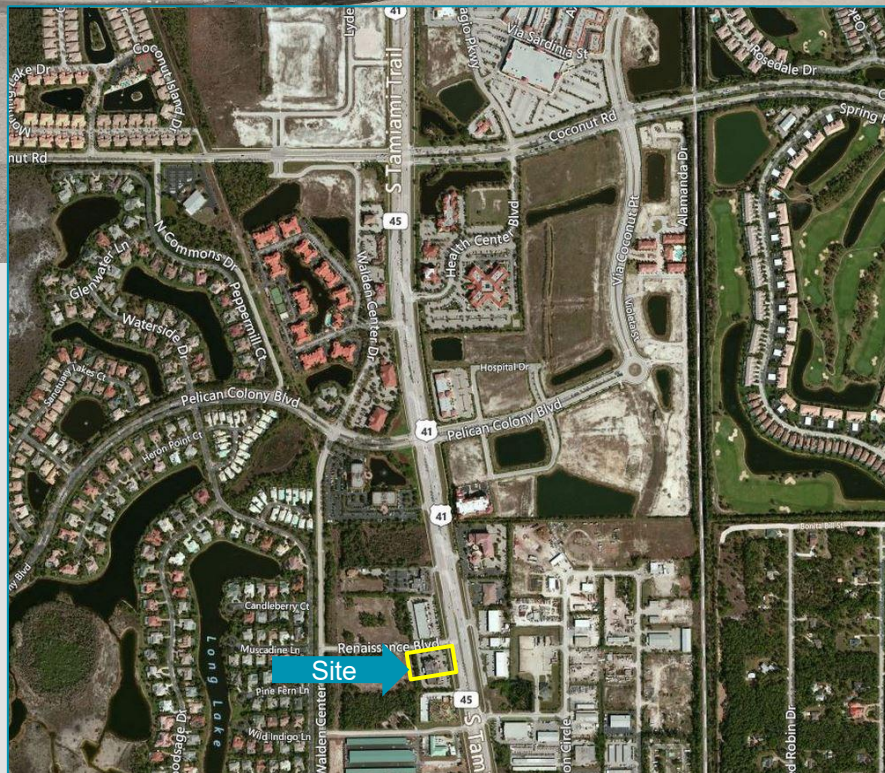


**2<sup>ND</sup> FLOOR EXECUTIVE SUITES  
ABOVE WILSON LIGHTING**


BUILDING FEATURES	
<b>LEASE RATE</b>	\$33.00 psf
<b>UNIT SIZE</b>	270 sf
<b>YEAR BUILT</b>	2001
<b>ZONING</b>	CPD
<b>PARCEL ID</b>	16-47-25-B2-02200.C000

**Property Highlights**

- Units are all on the 2<sup>nd</sup> floor, above the Wilson Lighting Store
- Includes a shared conference room, elevator, mailbox & 24/7 access. No Wi-Fi or Phone Incl.
- On-site building management
- Building fronts on US-41
- Easy access to FGCU, I-75, three regional malls, Naples & Fort Myers
- Not all uses will apply here – call for details



For more information, please contact:

**GARY TASMAN**  
CEO/Principal Broker  
239.489.3600  
[qtasman@cpswfl.com](mailto:qtasman@cpswfl.com)

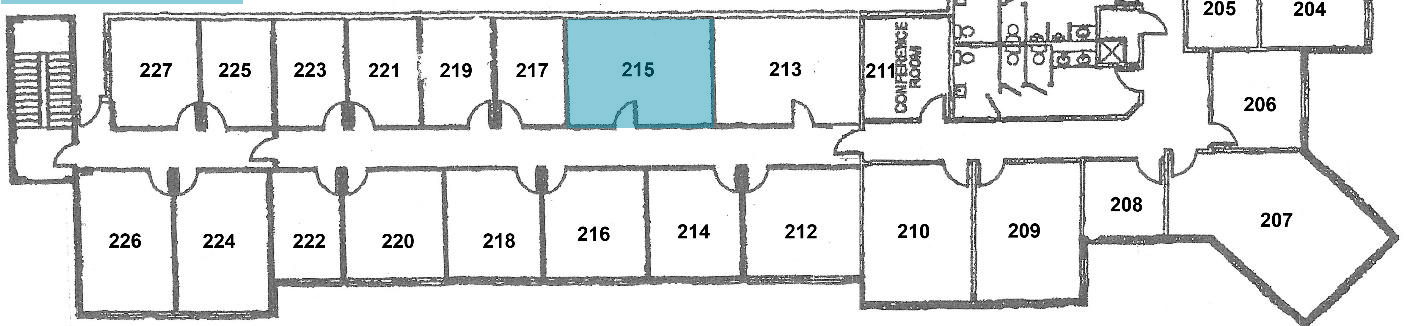
**HANNA RAY**  
Director  
239.489.3600  
[hray@cpswfl.com](mailto:hray@cpswfl.com)

5220 Summerlin Commons Blvd. Ste. 500  
Fort Myers, FL 33907  
239.489.3600  
[www.cpswfl.com](http://www.cpswfl.com)



UNIT #	UNIT SIZE	MONTHLY TOTAL*
215	270 SF	\$742.50

**AVAILABLE SUITES**



US 41 SIDE

**GARY TASMAN**  
CEO/Principal Broker  
239.489.3600  
gtasman@cpswfl.com

**HANNA RAY**  
Director  
239.489.3600  
hray@cpswfl.com

5220 Summerlin Commons Blvd. Ste. 500  
Fort Myers, FL 33907  
239.489.3600  
www.cpswfl.com