

POMERADO BUSINESS PARK
12250 KIRKHAM ROAD, POWAY, CA 92064

±28,087 SF
INDUSTRIAL SPACE
FOR SUBLEASE

JOSH WEST, SIOR
SENIOR VICE PRESIDENT | PARTNER
858.458.3358 | JWEST@VOITCO.COM
LICENSE #01923375

BRIAN MULVANEY, SIOR, CCIM
SENIOR VICE PRESIDENT | PARTNER
858.458.3375 | BMULVANEY@VOITCO.COM
LICENSE #00938944

Voit
REAL ESTATE SERVICES

MULVANEY SIOR
COMMERCIAL ALLIANCE 

BUILDING STATS

POMERADO BUSINESS PARK
PROJECT NAME

12250 KIRKHAM STREET, POWAY, CA 92064
ADDRESS

±56,383 SQUARE FEET
BUILDING SIZE

±3.23 ACRES
LOT SIZE

\$1.39 PSF GROSS
SUBLEASE RATE

ONE (1)
NUMBER OF FLOORS

MULTI-TENANT
TENANCY

0.40
FLOOR AREA RATIO (FAR)

1988
YEAR BUILT

±2.04/1,000 SF
PARKING RATIO

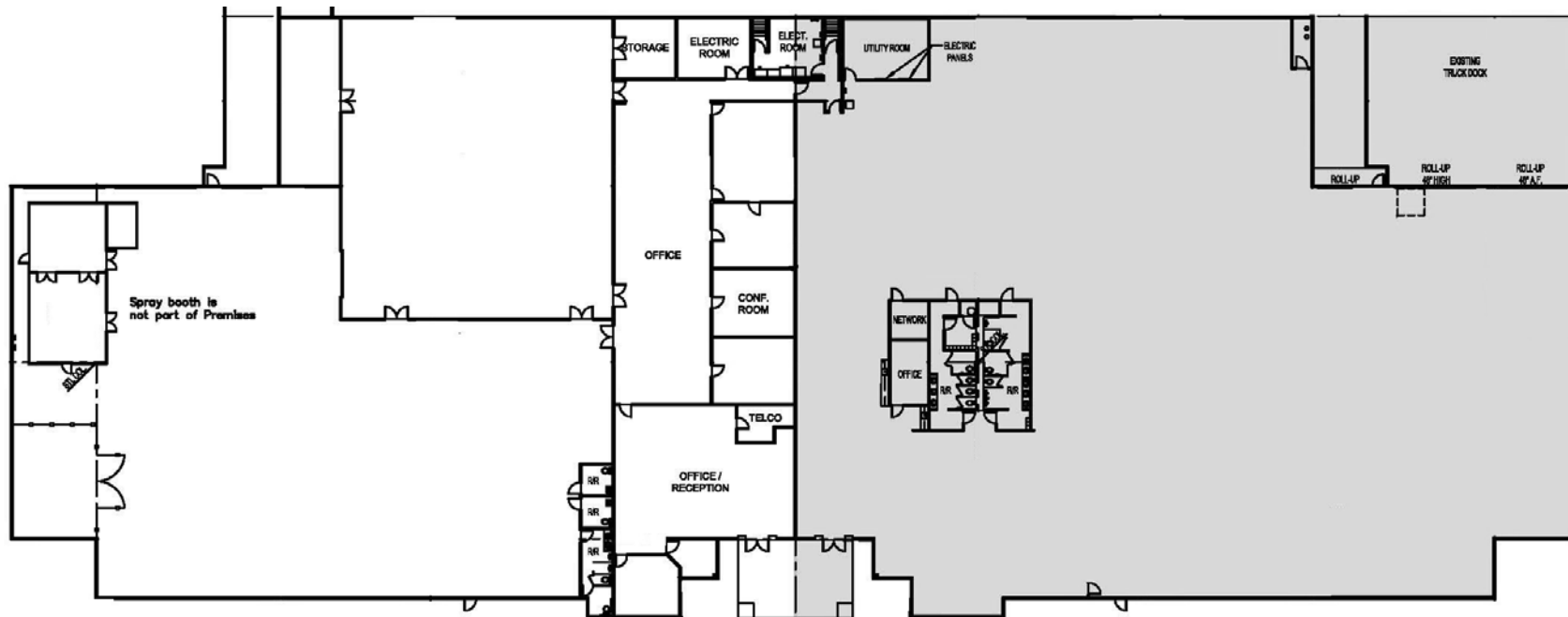
±26'
CLEAR HEIGHT

DOCK & GRADE
LOADING



PROPERTY HIGHLIGHTS

- » Prime location in the center of the Pomerado Business Park
- » Sprinklered
- » High visibility corner location
- » Centrally located along the I-15 corridor with excellent access to all surroundings amenities including: In-N-Out Burger, Carl's Jr., Subway, Costco, Home Depot, Staples and Kohl's
- » Adjacent to various leading employers in San Diego County including General Atomics, GEICO, Sysco, Teledyne, Honeywell and others



±28,087 SF
AVAILABLE: NOW
SUBLEASE RATE: \$1.39 PSF GROSS
SUBLEASE EXPIRATION: 8/31/28




POMERADO BUSINESS PARK
 12250 KIRKHAM ROAD, POWAY, CA 92064

JOSH WEST, SIOR
 SENIOR VICE PRESIDENT | PARTNER
 858.458.3358 | JWEST@VOITCO.COM
 LICENSE #01923375

BRIAN MULVANEY, SIOR, CCIM
 SENIOR VICE PRESIDENT | PARTNER
 858.458.3375 | BMULVANEY@VOITCO.COM
 LICENSE #00938944

Voit
 REAL ESTATE SERVICES

MULVANEY SIOR
 COMMERCIAL ALLIANCE 

4180 La Jolla Village Drive, Suite 100, La Jolla, CA 92037 | 858.453.0505 | 858.408.3976 F | Lic #01991785 | www.voidco.com

Licensed as a Real Estate Salesperson and Broker by the DRE. The information contained herein has been obtained from sources we deem reliable. While we have no reason to doubt its accuracy, we do not guarantee it. ©2025 Voit Real Estate Services, Inc. All Rights Reserved.