



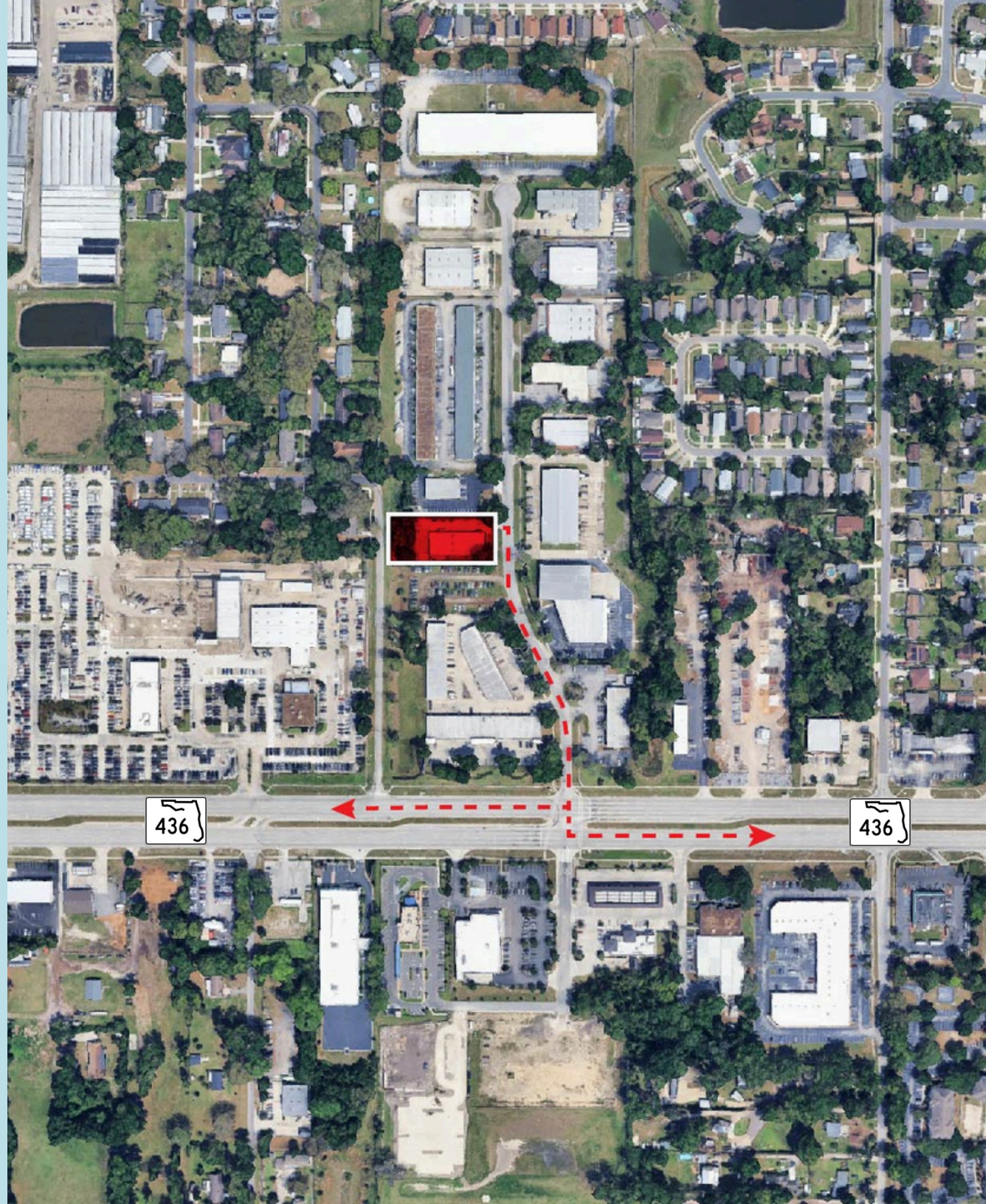
For lease or sale

278 Semoran Commerce Pl, Apopka, FL 32703
8,581 SF available

8,581 SF available
for lease or sale

Property specifications

- 8,581 SF free-standing building
- 4,800 SF of high-end office buildout
- 12'-14' clear height
- One 7'x12' grade-level door
- Built 1986
- Zoned I-L
- Available in 60 days
- **Sale: \$2,000,000 (\$233.07/SF)**
- **Lease: \$16.25 NNN**

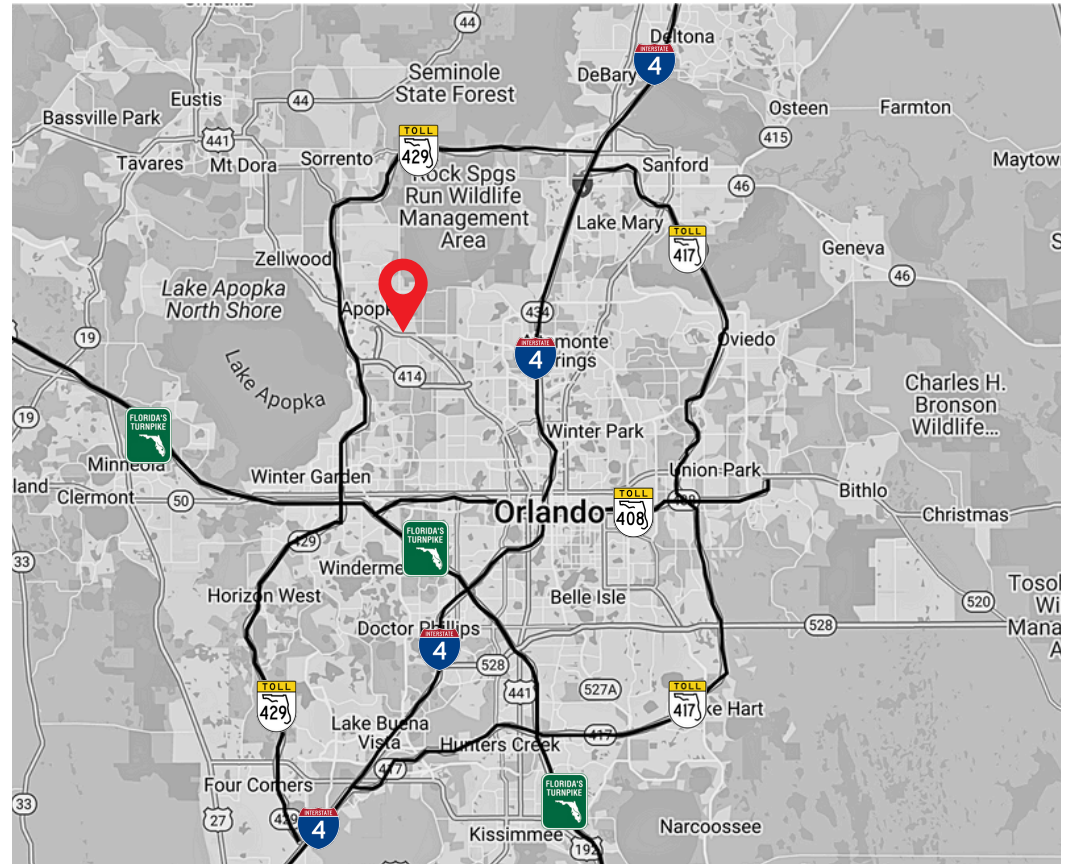


Location and demographics

Key Distances

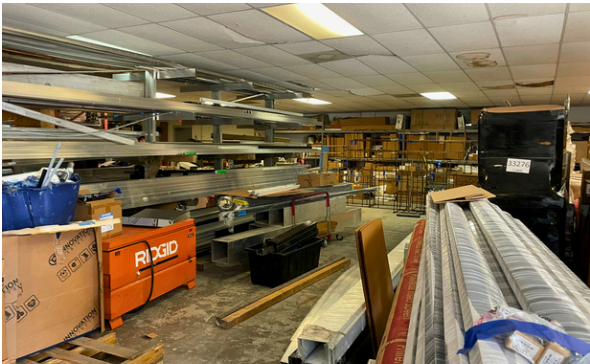
6 miles to SR 429	97 miles to Tampa
7 miles to Interstate 4	135 miles to Jacksonville
10 miles to SR 408	248 miles to Miami
14 miles to Florida's Turnpike	440 miles to Atlanta, GA

Situated in Apopka, this warehouse offers strategic positioning with excellent access to major transportation routes. The facility provides functional space in an established logistics district, ideal for distribution, manufacturing, or storage operations.



	30 min	60 min	90 min
Total population	947,262	3,250,262	5,475,947
Total households	366,678	1,215,685	2,128,574
Avg households	\$111,238	\$105,120	\$99,806
Total businesses	53,488	131,847	206,950
Total employees	532,367	1,377,289	2,135,483

Building photos



JLL**W. Malcolm Clayton**

Vice President

Malcolm.Clayton@jll.com

+1 407 670 9115

Matthew Halpin

Associate

Matthew.Halpin@jll.com

+1 407 709 4788

Bobby Isola, SIOR, CCIM

Executive Managing Director

Bobby.Isola@jll.com

+1 321 239 7918