

# FOXMOOR PLAZA

5660 BAYSHORE ROAD, NORTH FORT MYERS, FL 33917



## PROPERTY HIGHLIGHTS

- Anchored by **Aldi, Archwell Health, Octapharma**
- Signalized Intersection on **Bayshore Road**.
- 5 miles west of Interstate 75
- **High visibility** with 42,000 vehicles per day (AADT)
- Retail, Office and Restaurant spaces available.
- **More Details:** [richden.com/foxmoor](http://richden.com/foxmoor)

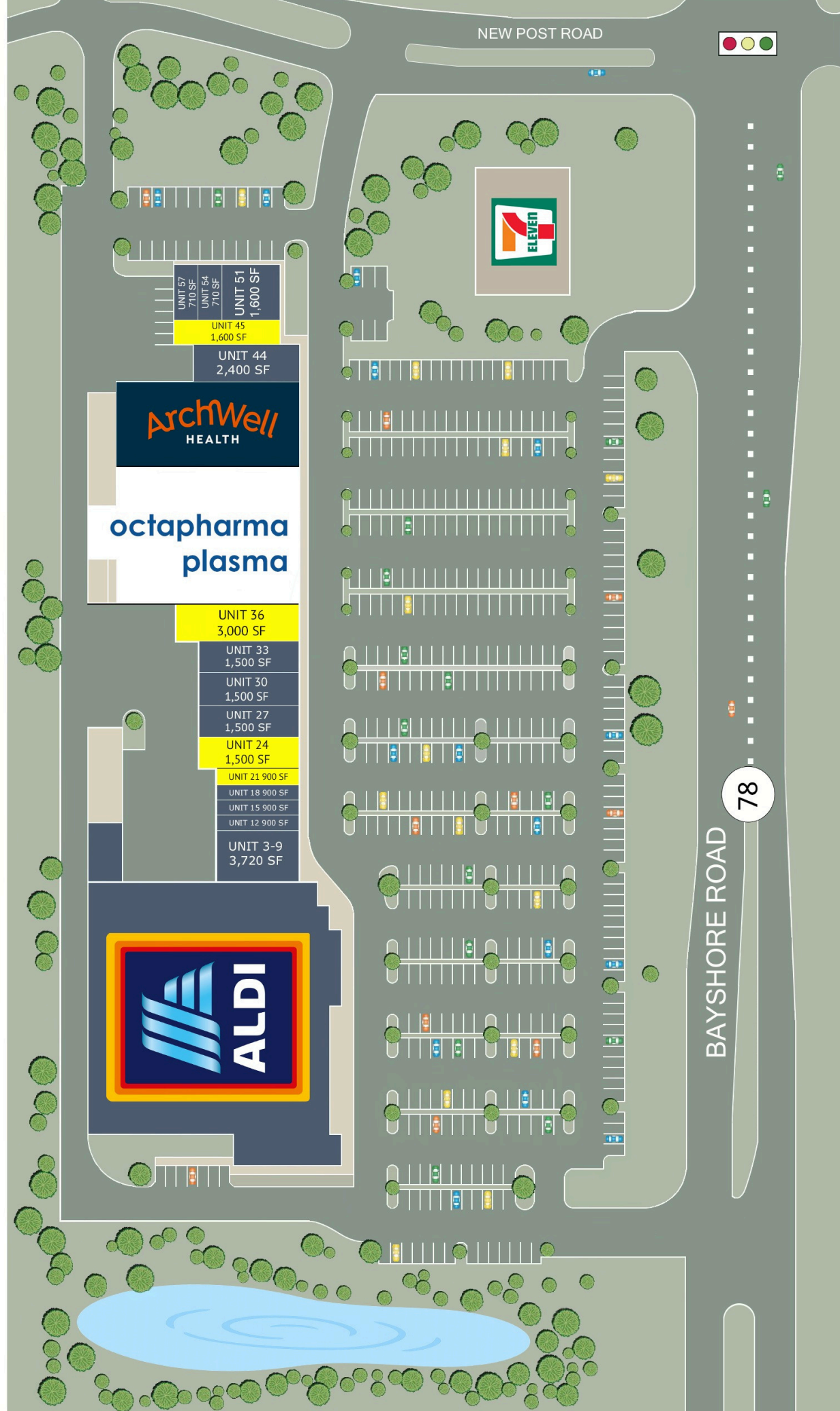
## AVAILABLE

- Unit 21 — 900 SF
- Unit 24 — 1,500 SF
- Unit 36 — 3,000 SF
- Unit 45 — 1,600 SF

Dennis Claussen

TRC Management, LLC

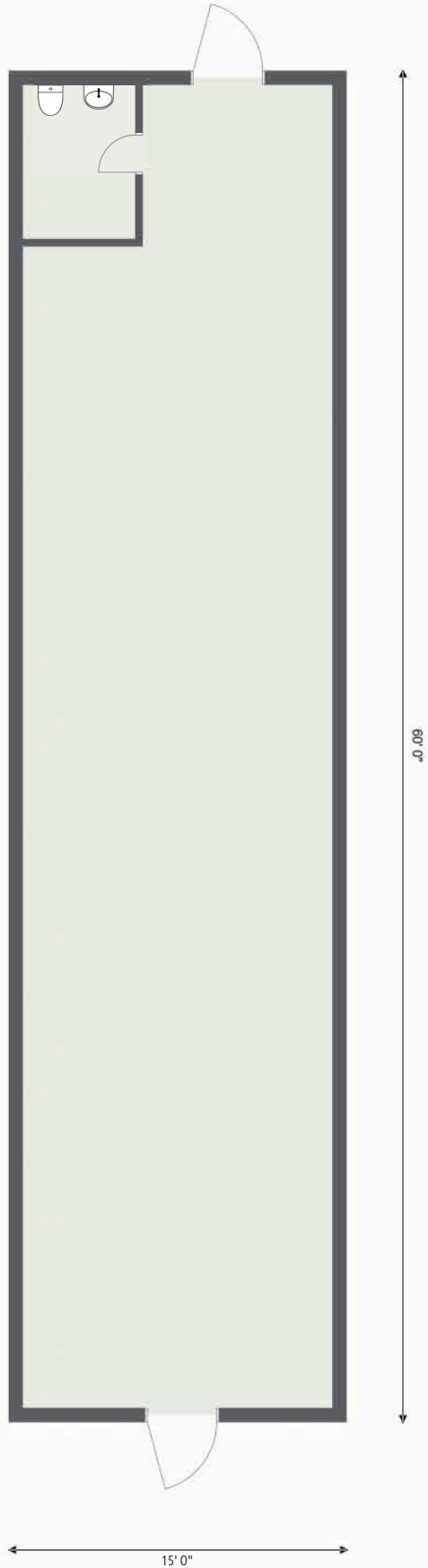
773-456-0477 | [dennis@richden.com](mailto:dennis@richden.com)



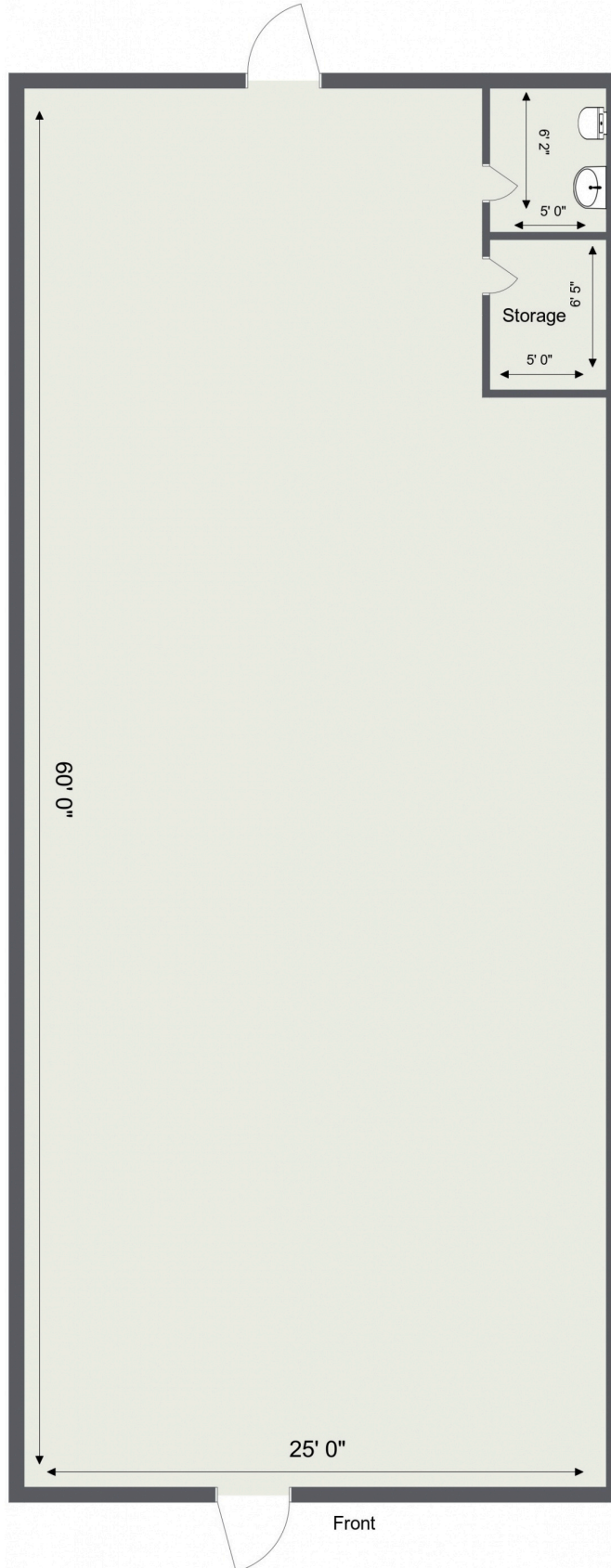
UNIT 57 710 SF	UNIT 54 710 SF	UNIT 51 1,600 SF
UNIT 45 1,600 SF		
UNIT 44 2,400 SF		
<b>ArchWell</b> HEALTH		
octapharma plasma		
UNIT 36 3,000 SF		
UNIT 33 1,500 SF		
UNIT 30 1,500 SF		
UNIT 27 1,500 SF		
UNIT 24 1,500 SF		
UNIT 21 900 SF		
UNIT 18 900 SF		
UNIT 15 900 SF		
UNIT 12 900 SF		
UNIT 3-9 3,720 SF		

**FOXMOOR PLAZA**  
 5600 BAYSHORE ROAD, N. FT MYERS, FL 33917

Foxmoor Plaza  
Unit 21  
5660 Bayshore Road  
N. Fort Myers, FL  
Approximately 900 SF



Foxmoor Plaza  
Unit 24  
5660 Bayshore Road  
N. Fort Myers, FL  
Approximately 1,500 SF



Foxmoor Plaza  
Unit 36  
5660 Bayshore Road  
N. Fort Myers, FL  
Approximately 3,000 SF



Foxmoor Plaza  
Unit 45  
5660 Bayhore Road  
N. Fort Myers, FL  
Approximately 1,600 SF

