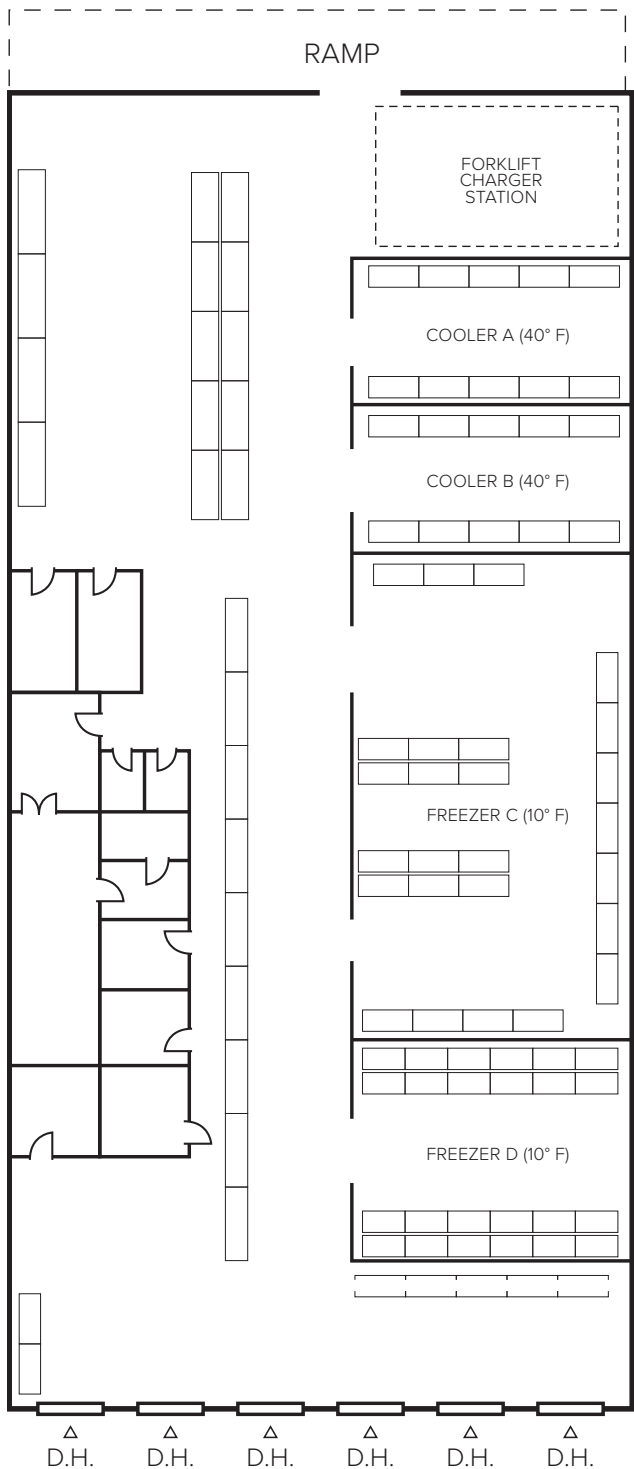


±17,745 SF INDUSTRIAL UNIT AVAILABLE
1215 WHOLESALE ST | LOS ANGELES, CA 90021



NOTE: Drawing not to scale. All measurements and sizes are approximate. Lessee to Verify

FOR MORE INFORMATION, PLEASE CONTACT

EVAN JURGENSEN

Senior Vice President | LIC NO 01967347
e ejurgensen@lee-associates.com
o 323.922.3733

JACK R. CLINE, JR.

President | LIC NO 00854279
e jcline@lee-associates.com
c 213.590.3512