



139 BANKER STREET BROOKLYN, NY 11222



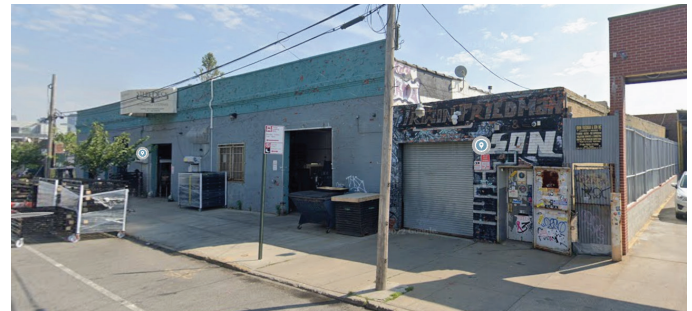
Available Space ▶ **13,900** Combined SF (Divisible)

FOR LEASE

Greenpoint Prime Location

PROPERTY INFORMATION

LOCATION	Banker St between Norman Ave & Nassau Ave
BLOCK/LOT	2642 / 52
BUILDING SIZE	16,500 SF
GROSS AVAILABLE SF	13,900 SF
DIVISIBLE INTO UNITS OF	<ul style="list-style-type: none"> • 2,400 SF • 4,500 SF • 7,000 SF
ZONING	M1-1
FEATURES	<ul style="list-style-type: none"> • Ground Floor • 17 FT Ceiling • 1 Drive-In • 1 Overhead Door • Concrete Roof



TRANSPORTATION

TRAIN	G 0.2 Mile 🚶 5 Min	L 12.5 Mile 🚶 11 Min	
BUS	B43 0.3 Mile 🚶 6 Min	B48 0.2 Mile 🚶 5 Min	B62 0.2 Mile 🚶 5 Min

For complete offering information or inspection, please contact exclusive brokers:

Lease Price ▶ \$32 PSF INCLUDING BASE RE TAXES

Divisible or Can Be Combined
Available Summer of 2026

STEVE MOURELATOS
STEVE@CTNYC.COM
📞 718-937-8100 x 117
📠 516-551-8481

TONY MUSTO
TONY@CTNYC.COM
📞 917-405-8100 x 101
📠 917-405-8100



139 BANKER STREET BROOKLYN, NY 11222

**FOR
LEASE**

Available Space ▶ **13,900** Combined SF (Divisible)

12,400 SF Ground Floor
+
1,500 SF Mezzanine

13,900 SF

BANKER STREET

