




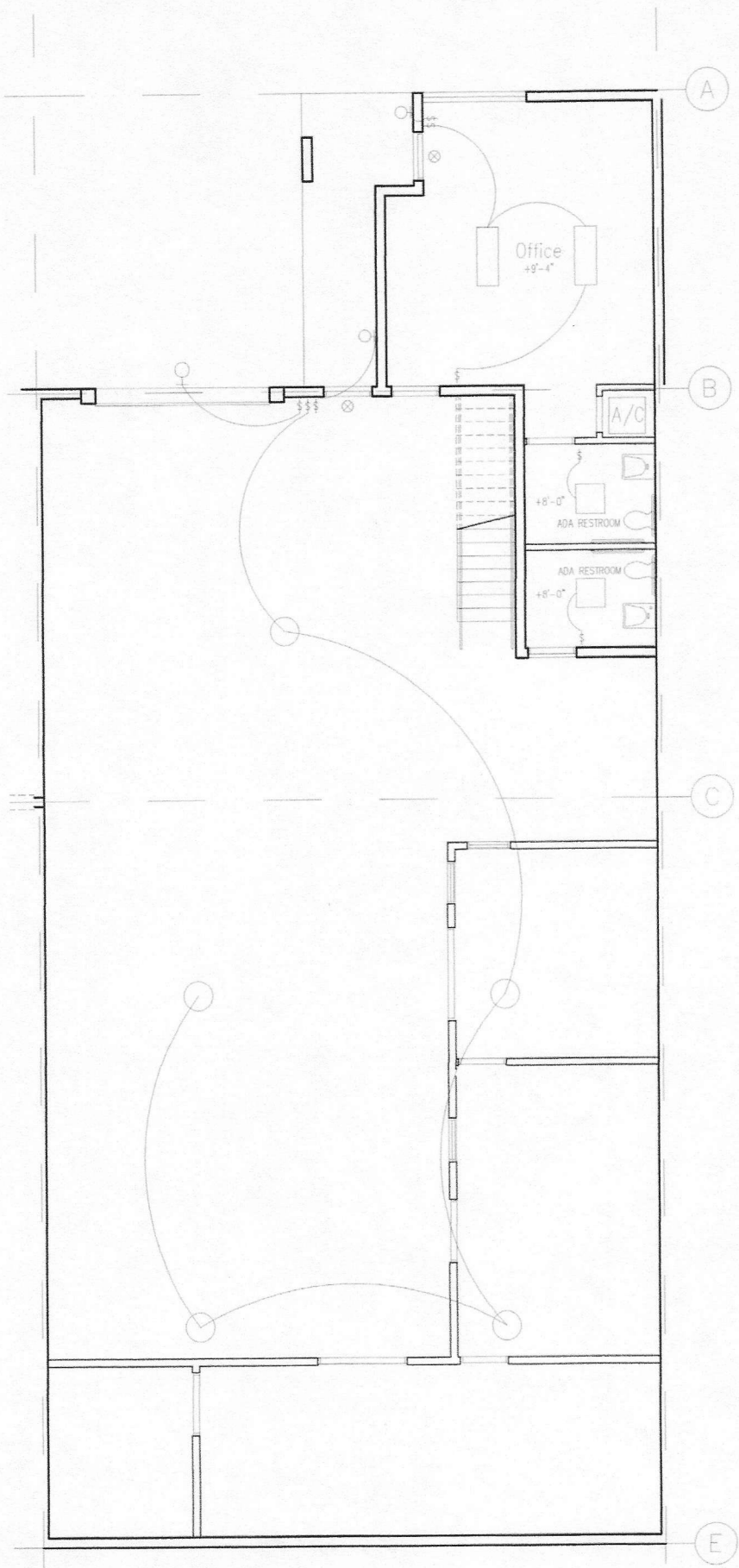


Marine & Industrial, Inc.
 8609 NW 64 street (Bay 3)
 1-23-2012
 Chandler and Associates
 Ground Floor

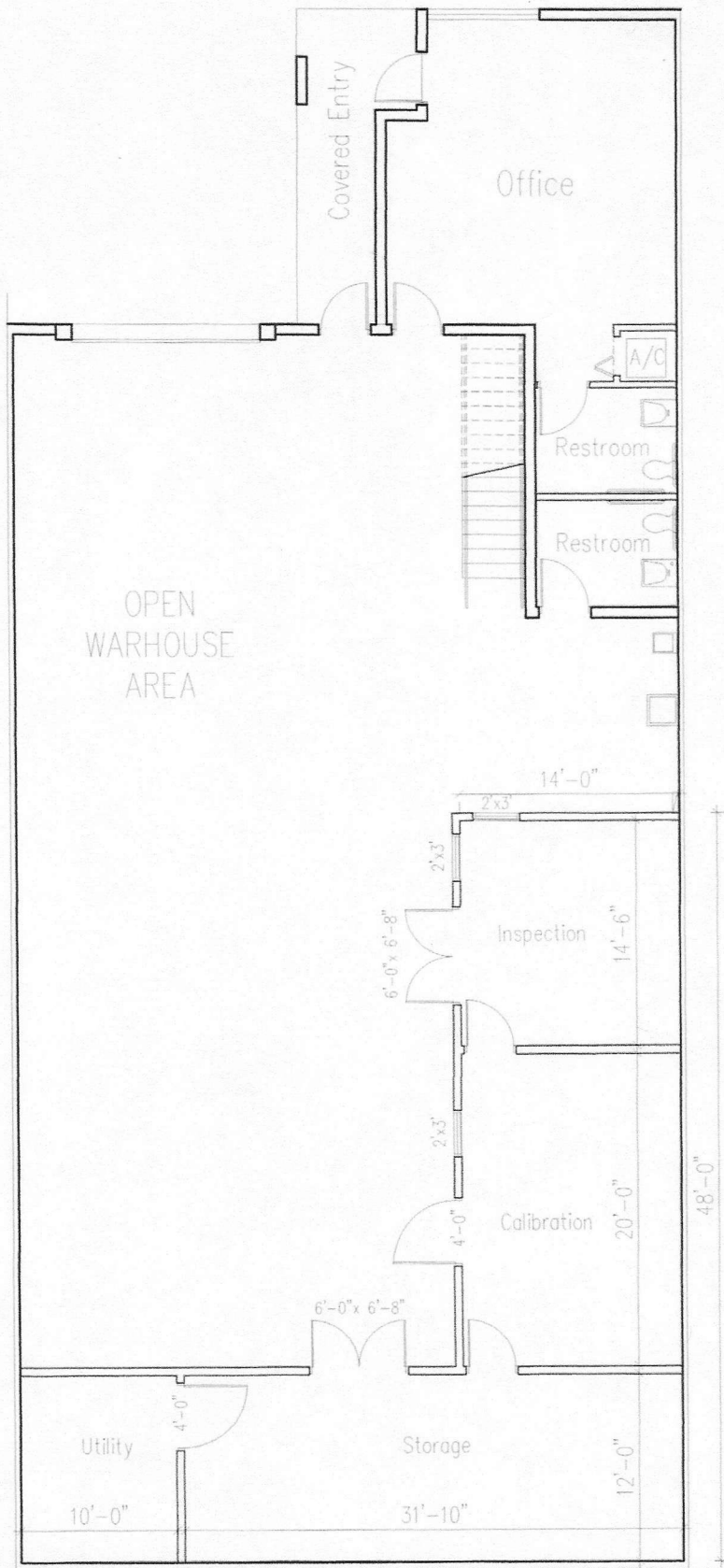
NOTE: CONTRACTOR TO PROVIDE ADEQUATE BLOCKING, ANCHORS AND/OR REINFORCEMENT FOR WALL MOUNTED ITEMS, AS PER MANUFACTURE'S SPECS AND APPLICABLE REQUIREMENTS

NOTE: THIS PLAN IS FOR LAYOUT PURPOSES ONLY SEE ELECTRICAL DWGS FOR ALL OTHER INFORMATION.

LIGHTING LEGEND	
	CEILING MOUNTED FLUORESCENT 1' X 4' BY LIGHTOUER OR APPROVED EQUAL
	CEILING MOUNTED FLUORESCENT 2' X 2' BY LIGHTOUER OR APPROVED EQUAL
	HIGH BAY H.L.D. 24" ROUND
	EXIT LIGHT
	WALL MOUNTED EXTERIOR LIGHT FIXTURE



Marine & Industrial, Inc.
8609 NW 64 street (Bay 3)
1-23-2012
Chandler and Associates
Ground Floor



Marine & Industrial, Inc.
8609 NW 64 street (Bay 3)
1-23-2012
Chandler and Associates
Ground Floor

