

Date

Revisions

ALL IDEAL DESIGN ARRANGEMENTS AND PLANS INDICATED OR REPRESENTED BY THESE DRAWINGS ARE OWNED BY AND THE PROPERTY OF THIS OFFICE AND WERE CREATED, EVOLVED AND DEVELOPED FOR USE ON AND IN CONNECTION WITH THE SPECIFIC PROJECT. NONE OF SUCH IDEAS, ARRANGEMENTS OR PLANS SHALL BE USED BY OR PROVIDED TO ANY PERSON, FIRM OR CORPORATION FOR ANY PURPOSE WHATSOEVER WITHOUT THE WRITTEN PERMISSION OF BECK ARCHITECTURAL GROUP, L.L.C. VIOLATIONS OF THESE DRAWINGS SHALL HAVE PRECEDENCE OVER SCALED DIMENSIONS AND CONDITIONS SHOWN BY THESE DRAWINGS. SHOP DETAILS OF PRODUCTS SHALL NOT BE SUBMITTED TO THE OFFICE FOR REVIEW BEFORE PROCEEDING WITH FABRICATION UNLESS AS NOTED.

WYNN'S DOWNTOWN
1090 1ST AVE S.
NAPLES, FLORIDA 34102

KYLE A. VAYDA, P.A. NCARB
FL LICENSE NO. AA102813

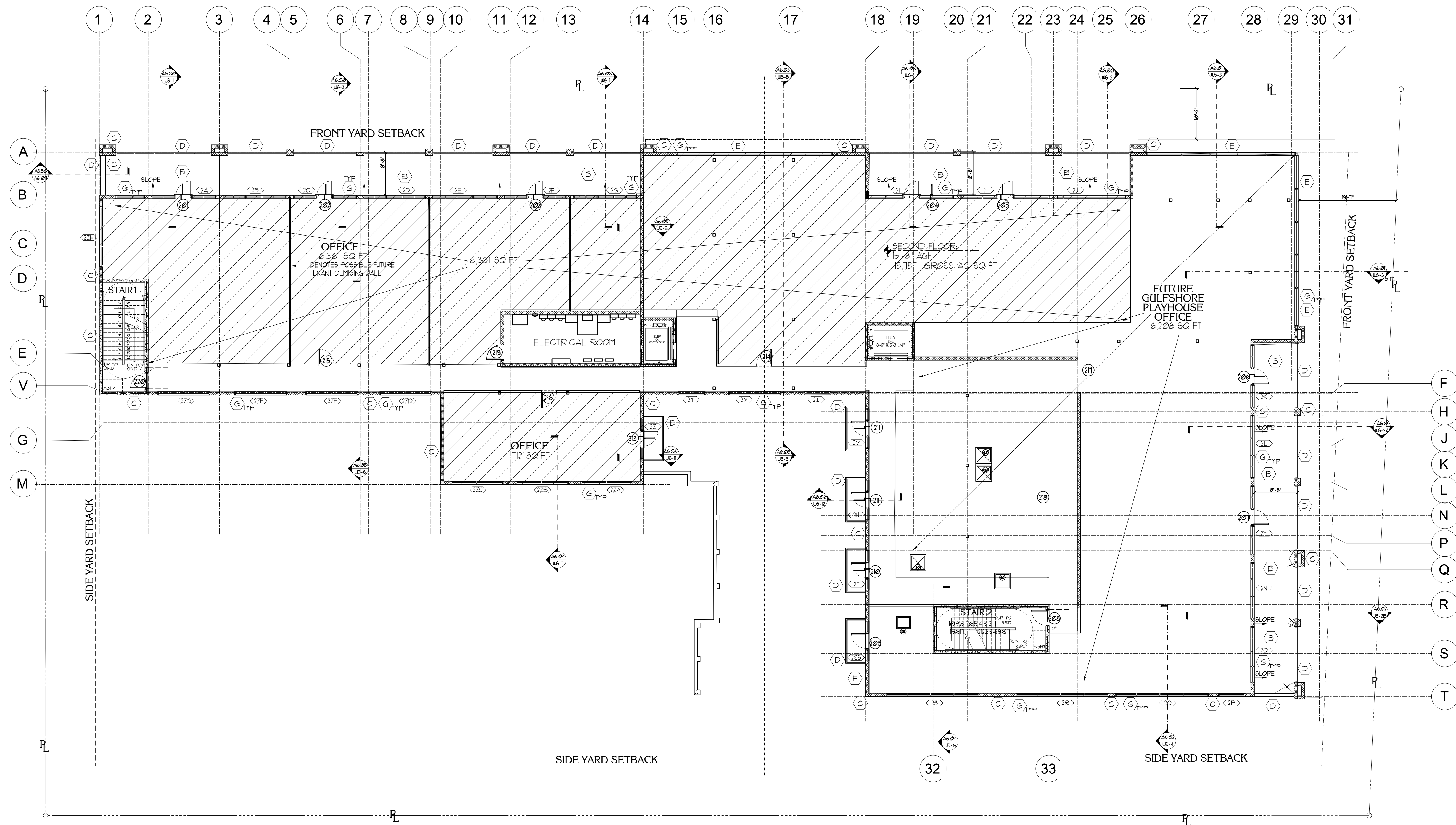
PROJ. #: 2110-14

DRAWN BY: RAV.

DATE: 01.22.2025

SHEET:
A2.00

PERMIT



FLOOR PLAN KEY NOTES

(A)	SIKA 126 TRAFFIC COATING OR TREMCO VULKEM 350 - 351 PEDESTRIAN COATING SYSTEM TO BE APPLIED ON CONCRETE WITH PRIMER AND DIMONIC 100 AT ALL CORNERS - AT ALL EXTERIOR WALKWAYS, URUP UP WALLS MIN OF 10" AND INST ALL PER MANUFACTURERS INSTRUCTIONS. PROVIDE 10 YR WARRANTY.
(B)	PROFLEX 55-90 PREMIUM 90 MIL CRACK ISOLATION AND SOUND MEMBRANE. INSTALL AT ALL INTERIOR THIRD FLOOR AREAS. DO NOT INSTALL IN UTILITY, SERVICE OR ELECTRICAL ROOMS. LEVEL ALL FLOORS PRIOR TO INSTALLATION.
(C)	C.F. CEMENTITIOUS FINISH (STUCCO). INSTALL SAND FINISH ON ALL SURFACES PROVIDE ALL NECESSARY EDGING AND CONTROL JOINTS. PROVIDE MIN 4" X 8" MOCK UP FOR OWNERS APPROVAL PRIOR TO BEGINNING INSTALLATION.
(D)	BLACK ALUMINUM RAILING WITH 86 HORIZONTAL CABLES. FABRICATE AND INSTALL TO MEET ALL FLORIDA BUILDING CODE REQUIREMENTS. PROVIDE 10 YR WARRANTY. COORDINATE INSTALLATION OF POSTS WITH CONCRETE/STRUCTURAL. PROVIDE NEAT AND CLEAN INSTALLATION WITH POST COVER PLATES IF REQUIRED.
(DD)	DECK DRAIN
(E)	CURTAIN WALL SYSTEM
(F)	ALUMINUM DECORATIVE WALL VENTILATION LOUVER HURRICANE RATED - PROVIDE NOA BLACK FINISH
(G)	INSTALL TREMCO TAMOSEAL AT WINDOW AND DOOR OPENINGS. INSTALL SIKA CANT BEAD AT ALL INSIDE CORNERS
(H)	ALL WINDOWS THIS FLOOR ONLY TO HAVE WHITE SOLID SURFACE MATERIAL INSTALLED AT INTERIOR WINDOW SILL. ROUND ALL EDGES

(5A/5B)	2 HR RATED SHAFT WALL ENCLOSURE CLEAR OPENING 34" X 21" FOR FUTURE KITCHEN EQUIPMENT - FIRST FLOOR TO ROOF - NOTE MAX 5'-0" ALLOWED EQUIPMENT HEIGHT ON ROOF - EQUIPMENT MUST BE SCREENED
(5C)	2 HR RATED SHAFT WALL ENCLOSURE CLEAR OPENING: 32" X 32" FOR FUTURE KITCHEN EQUIPMENT FIRST FLOOR TO THIRD FLOOR MECH WELL
(5D)	2 HR RATED SHAFT WALL ENCLOSURE CLEAR OPENING: 34" X 32" FOR MOA UNIT FIRST FLOOR TO THIRD FLOOR MECHANICAL WELL
(5E)	1 HR RATED SHAFT ENCLOSURE CLEAR OPENING: 24" X 28" FIRST FLOOR TO THIRD FLOOR MECHANICAL WELL.
(5F)	1 HR RATED SHAFT WALL ENCLOSURE CLEAR OPENING: 34" X 32" FOR MOA UNIT SECOND FLOOR TO THIRD FLOOR MECHANICAL WELL.
FLOOR DRAIN - SLOPE CONCRETE FLOOR TO DRAINS	

SECOND FLOOR NOTE PLAN
SCALE: 3/32" = 1'-0"