

FOR LEASE

1135 17 AVENUE SW

CALGARY, ALBERTA



FULL-FLOOR OFFICE SPACE IN THE HEART OF 17TH AVENUE

Alexi Olcheski
President & CEO
403 971 5167
alexi.olcheski@kpliglobal.com

Estelle Tran
Managing Director
403 993 2898
estelle.tran@kpliglobal.com

Anastasiya Gryshchenko
Vice President
403 888 1748
anastasiya.gry@kpliglobal.com

KPLI
GLOBAL

PROPERTY DETAILS

Availability Suite 300: 3,800 sf

Operating Costs Op. Costs - \$16.48 sf
Tax - \$2.39 psf
Total - \$18.87 psf

Parking 28 Surface Stalls
(1 Stall per 663 SF)

Parking cost \$150 per stall

Comments Furniture Available

- Situated in the heart of Calgary's most vibrant retail and entertainment corridor
- Highly walkable with excellent transit access, nearby parking options, and quick connectivity to the downtown core.
- Enjoy exclusive use of an entire floor, ideal for businesses seeking privacy, control, and a strong brand presence without shared common areas.



1135 17
AVENUE SW



FLOORPLAN



Suite 300
3,800 SF



RECEPTION



13 OFFICES



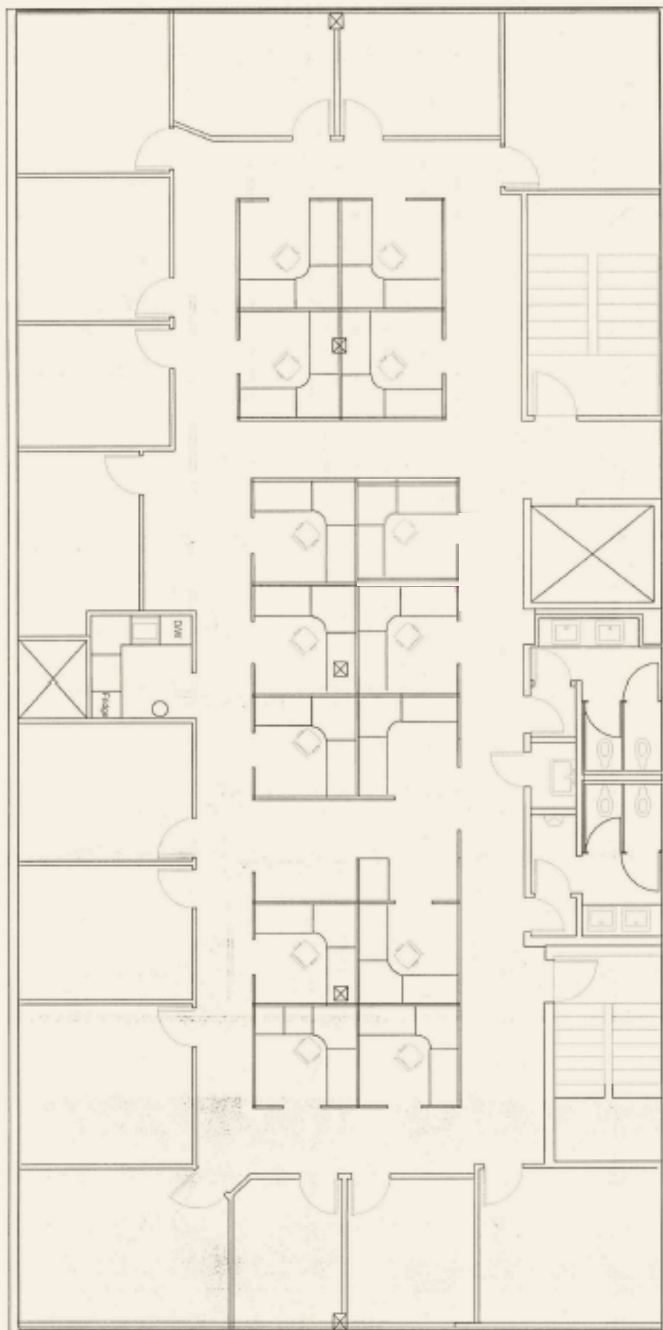
BOARDROOM



OPEN AREA



WASHROOMS





1135 17 AVENUE SW

CONTACT US FOR MORE INFORMATION



Alexi Olcheski

President & CEO

403 971 5167

alexi.olcheski@kpliglobal.com



Estelle Tran

Managing Director

403 993 2898

estelle.tran@kpliglobal.com



Anastasiya Gryshchenko

Vice President

403 888 1748

anastasiya.gry@kpliglobal.com