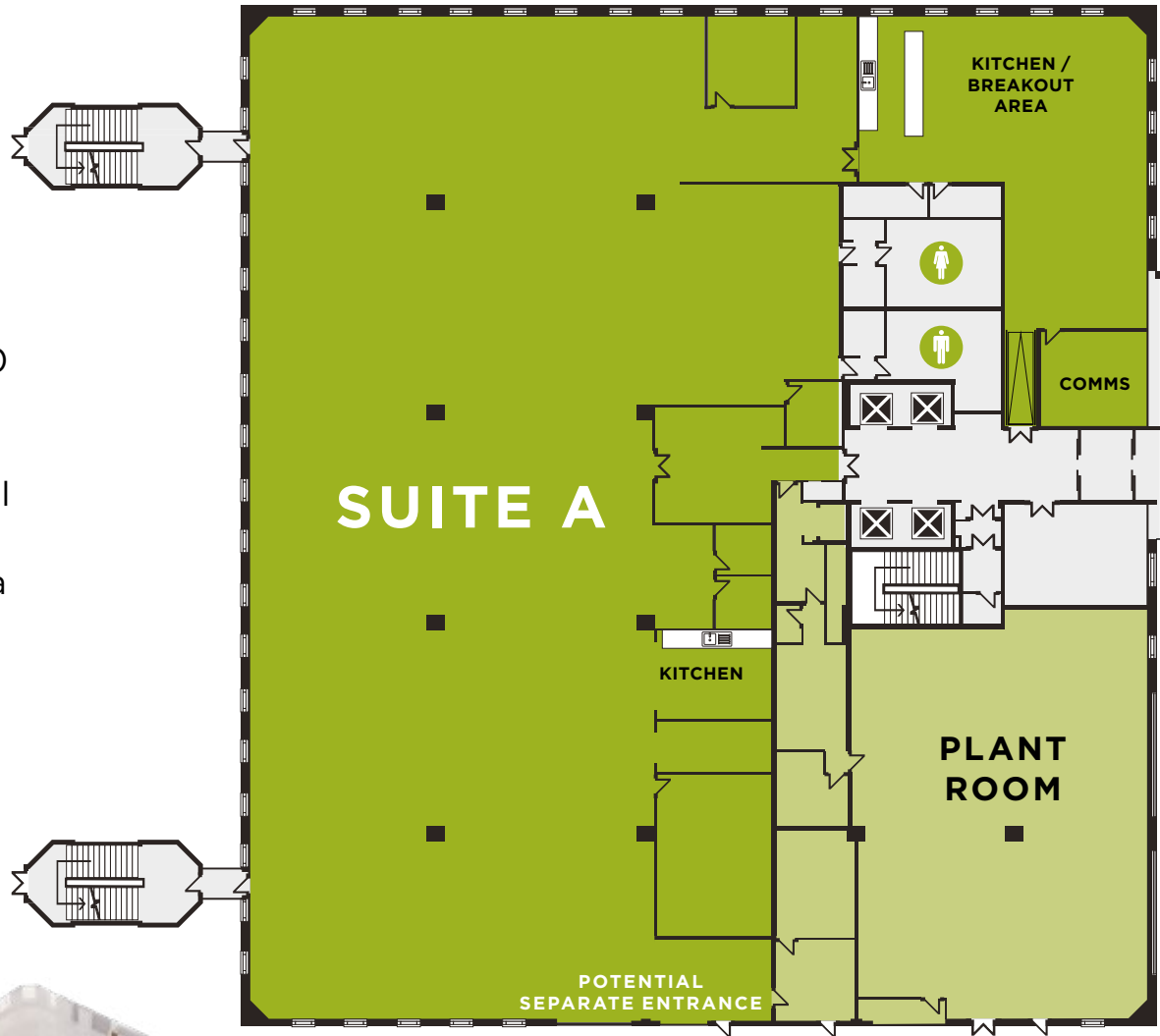


GROUND FLOOR

8,000-17,777
SQ.FT.

Available as a whole or split into suites from around 8,000 SQ. FT., the ground floor has been fully refurbished and benefits from a mix of internal rooms, kitchen break-out spaces, and pre-installed data and comms rooms. Further enhance your new space with your finishing touches.

The space could also suit other uses such as lab or life sciences, and has its own separate entrance.



EXAMPLE SPACE
PLAN



Full access raised floor



BMS controlled air conditioning throughout



LED lighting



Pre-connected data with comms room



Kitchen and meeting rooms

LIFESTYLE OFFICE SPACE

PARK **SQ.**

CHEADLE, SK3 0NX

01625 588200

www.park-square.co.uk



WATCH THE PARK
SQUARE VIDEO HERE

Orbit
Developments

Misrepresentation Act 1967. Unfair Contract Terms Act 1977 The Property Misdescriptions Act 1991. These particulars are issued without any responsibility on the part of the agent and are not to be construed as containing any representation or fact upon which any person is entitled to rely and do not constitute the whole or any part of an offer or contract. Orbit Developments cannot guarantee and accepts no liability whatsoever for the accuracy of any description, dimensions, references to condition, necessary permissions for use and occupation and other details contained herein and prospective purchasers or tenants must therefore not rely on them as agent advisor or other representative statement of fact or representations and must satisfy themselves as to their accuracy. Neither the agent nor any person in their employ has any authority to make or give any representation or warranty whatsoever in relation to the property. Space planning contained in this brochure is indicative only and may require modifications to the building design. All floor plans are not to scale and are for identification purpose only. (0424)