

FOR LEASE

CBRE

SHOEMAKER DISTRIBUTION CENTER

±13,879 SF

15060 SHOEMAKER BOULEVARD
Santa Fe Springs, CA 90670

PROPERTY FEATURES



±1,660 SF Office Space



24' Minimum Clearance



Sprinklered



2 Dock High Positions



1 Grade Level Door



400 Amp, 277/480 Volt Power



Union Pacific Rail Service Possible



Immediate Access to 91 and
5 Freeways



Available 10/1/26



FOR MORE INFORMATION, CONTACT:

LAIRD PERKINS

Senior Vice President

Lic. 00966207

+1 310 363 4920

laird.perkins@cbre.com

BLAKE WADE

Senior Associate

Lic. 02118407

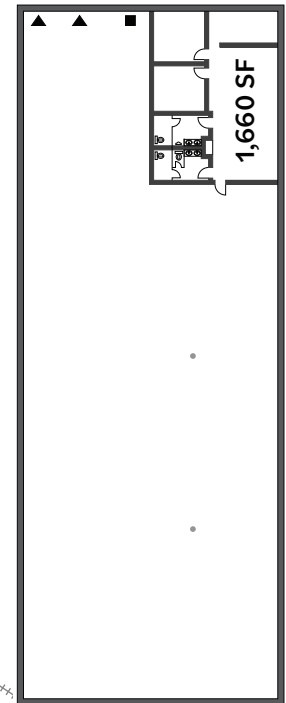
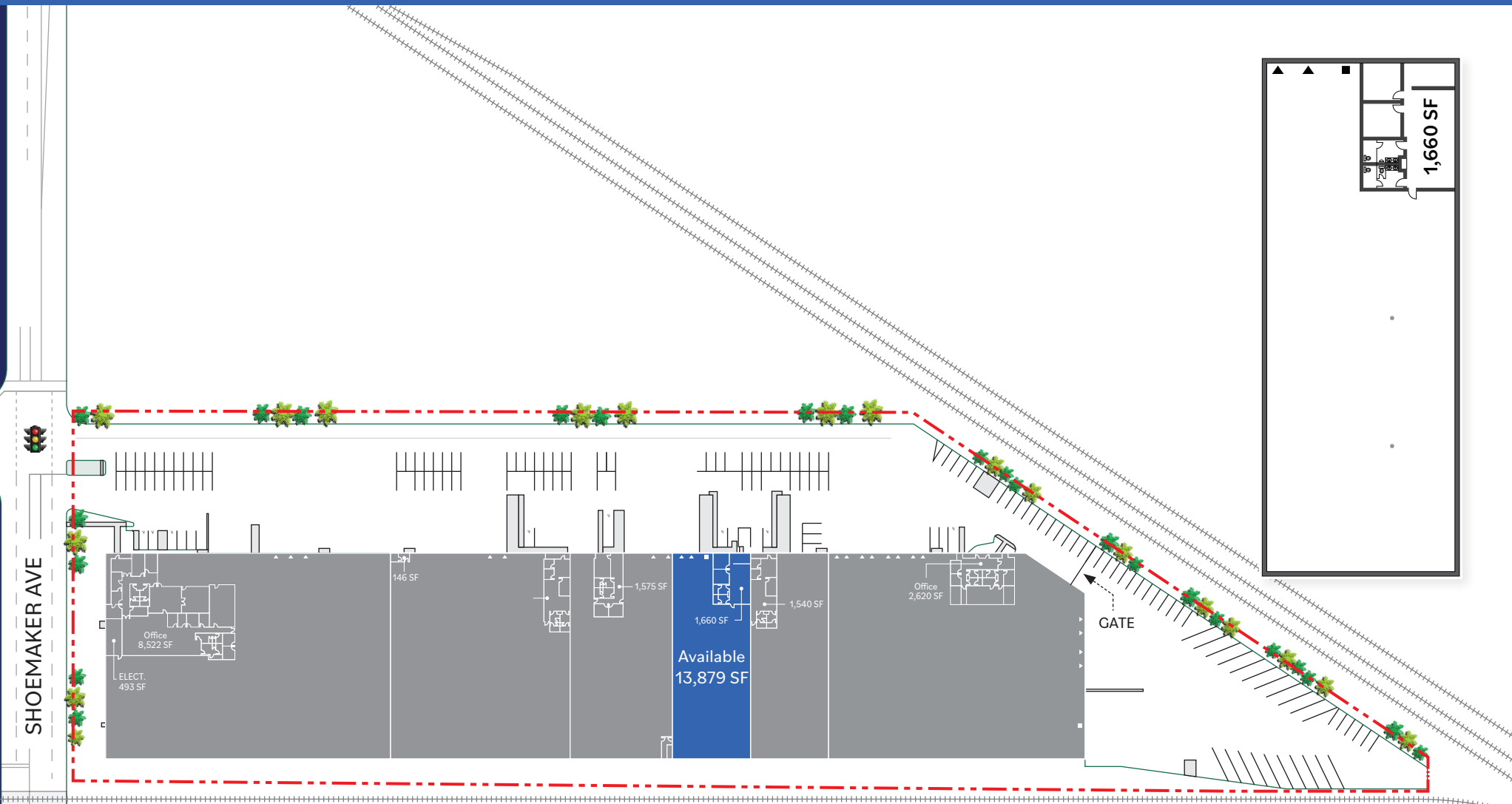
+1 949 878 2933

blake.wade@cbre.com

FOR LEASE

SHOEMAKER DISTRIBUTION CENTER

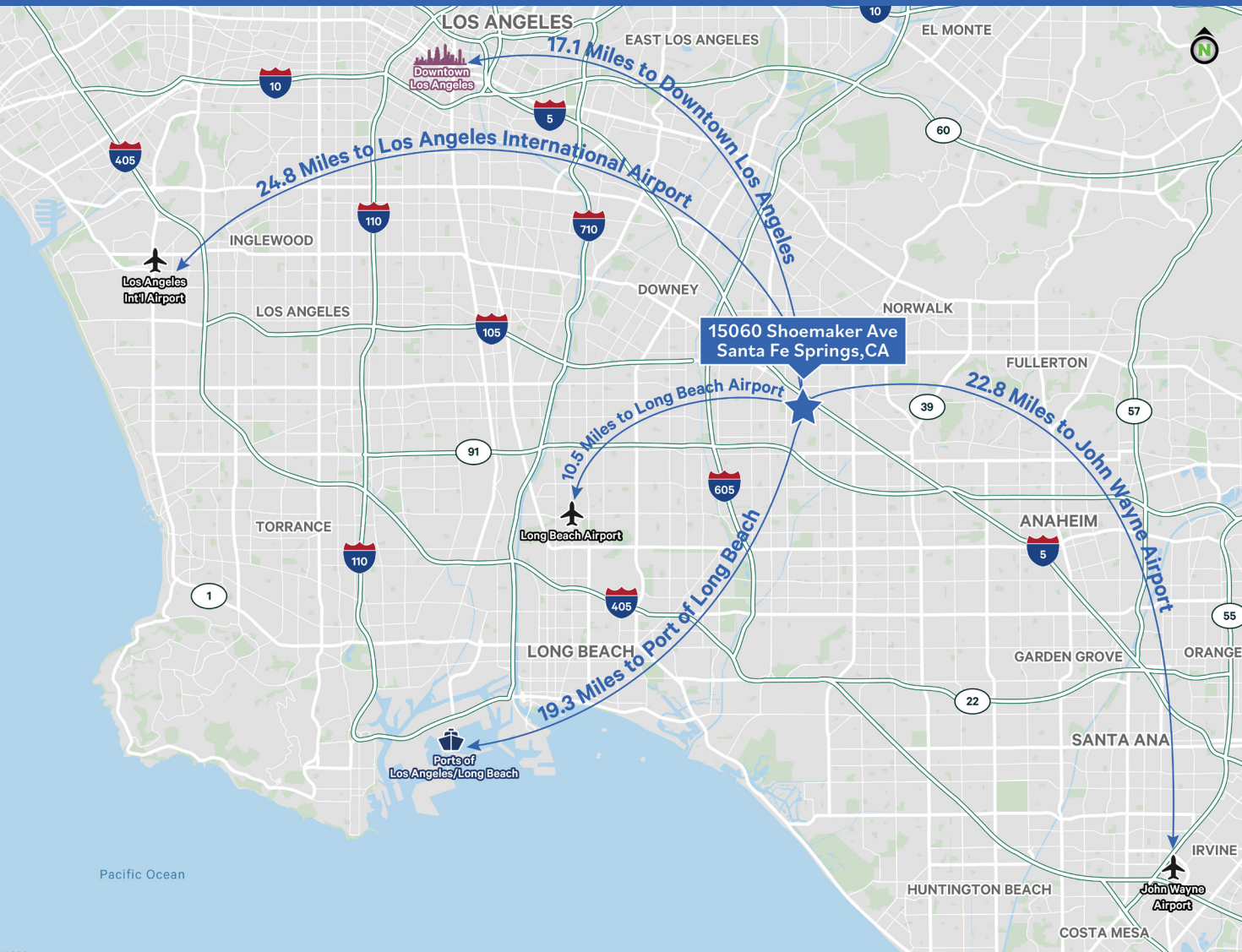
±13,879 SF



FOR LEASE

SHOEMAKER DISTRIBUTION CENTER

±13,879 SF



FOR MORE INFORMATION,
PLEASE CONTACT:

LAIRD PERKINS

Senior Vice President

Lic. 00966207

+1 310 363 4920

laird.perkins@cbre.com

BLAKE WADE

Senior Associate

Lic. 02118407

+1 949 878 2933

blake.wade@cbre.com

© 2026 CBRE, Inc. All rights reserved. This information has been obtained from reliable sources but has not been verified for accuracy or completeness. CBRE, Inc. makes no guarantee, representation, or warranty and accepts no responsibility or liability for the accuracy, completeness, or reliability of the information contained herein. You should conduct a careful, independent investigation of the property and verify all information. Any reliance on this information is solely at your own risk. CBRE and the CBRE logo are service marks of CBRE, Inc. All other marks displayed on this document are the property of their respective owners, and the use of such marks does not imply any affiliation with or endorsement of CBRE. Photos herein are the property of their respective owners. Use of these images without the express written consent of the owner is prohibited.

CBRE