

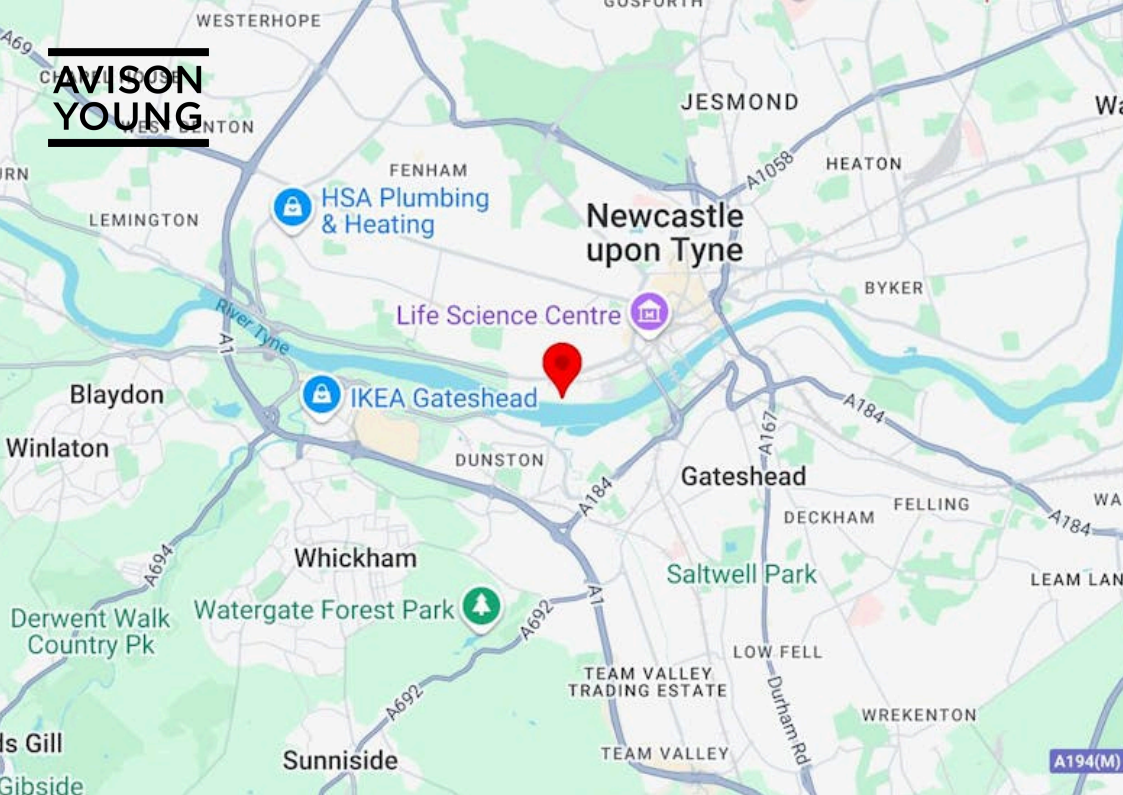


**AVISON
YOUNG**

Newcastle Business Park, Hampshire Court, Newcastle Upon Tyne,
NE4 7YG

Office To Let | £16.50 per sq ft | 6,867 to 30,439 sq ft

Office To Let, Newcastle Upon Tyne



Description

Weymouth House is prominently located on Newcastle Business Park in Hampshire Court directly overlooking Monarch Road. The property is a two storey brick built office building with a tiled pitched roof. The offices offer modern flexible open plan accommodation with the ability to occupy on an open plan or cellular basis. Attractive Grade A Office Building in Newcastle upon Tyne To Let

Location

Weymouth House is Situated in an attractive riverside location, with extensive landscaping and benefits from good road links with the A695 being nearby. The A695 has regular bus links, and the A167 as well as Newcastle city centre, are easily accessible. Rail links are available in approximately 25 minutes' walk from Newcastle Central Station.

EPC

B

Key Points

- From 638 sq m (6867 sq ft) to 2828 sq m (30439 sq ft)
- Available now for occupation
- Refurbished office accommodation
- Easy Access to City Centre and A1
- High quality Business Park location
- 100 car parking spaces
- Air conditioning

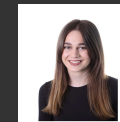
Summary

- Rent: £16.50 per sq ft
- VAT: Applicable. VAT if applicable will be charged at the standard rate.
- EPC: B
- Lease: New Lease

Further information

- [View details on our website](#)
- [Watch a video](#)

Contact & Viewings



Megan Cooper
0191 269 0066 | 07823 552 237
megan.cooper@avisonyoung.com



Adam Lawson
0191 269 0064 | 07825 113 277
adam.lawson@avisonyoung.com

