

# SHADY GROVE

## DEVELOPMENT PARK

9260-9264 GAITHER ROAD | BUILDING 4

### Available

12,677 sf

### Parking Ratio

3.0 spaces/ 1,000 sf

### Columns

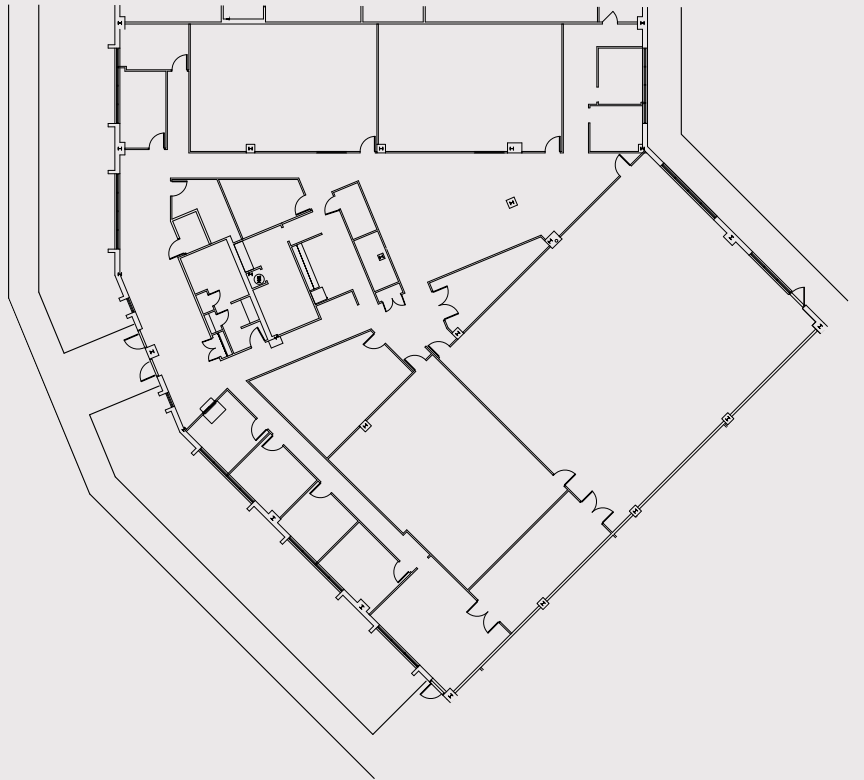
25 ft x 26 ft

### Clear Height

12 ft

### Features

- Flex/office space with on-grade dedicated exterior access.
- Building signage available.
- Existing studio rooms for dance/exercise.
- Fully conditioned space.
- Ability to demise space.



Minkoff

**Mike Maites | Director of Leasing**  
mmaites@minkoffdev.com

**Ben Wiebusch | Leasing Associate**  
bwiebusch@minkoffdev.com

240.912.0200 | [minkoffdev.com](http://minkoffdev.com)

REAL ESTATE  
PERSONAL PERSPECTIVE