

6555 ROCK SPRING DRIVE

Bethesda, MD 20817

Office For Lease

5,896 - 13,971 SF



Leasing Information:
410.659.1234

Brent Prossner **Merrill Turnbull**
410.659.1234 x122 202.513.6713
bprossner@lpc.com mturnbull@lpc.com

Lincoln

Lincoln Property Company
300 W Pratt Street Suite 520
Baltimore, MD 21201

www.lpc.com

6555 ROCK SPRING DRIVE

Office For Lease

235,417 SF

Bethesda, MD 20817



Property Highlights

- Easy access to Capital Beltway and I-270
- Close proximity to Montgomery mall, Georgetown Square and Wildwood Shoppes
- 3.0 / 1,000 SF parking ratio in covered garage
- Energy Star certified
- On-site management
- Highly efficient floor plan
- Triple power redundancy

Availabilities

Suite 280B

SF

5,896 SF

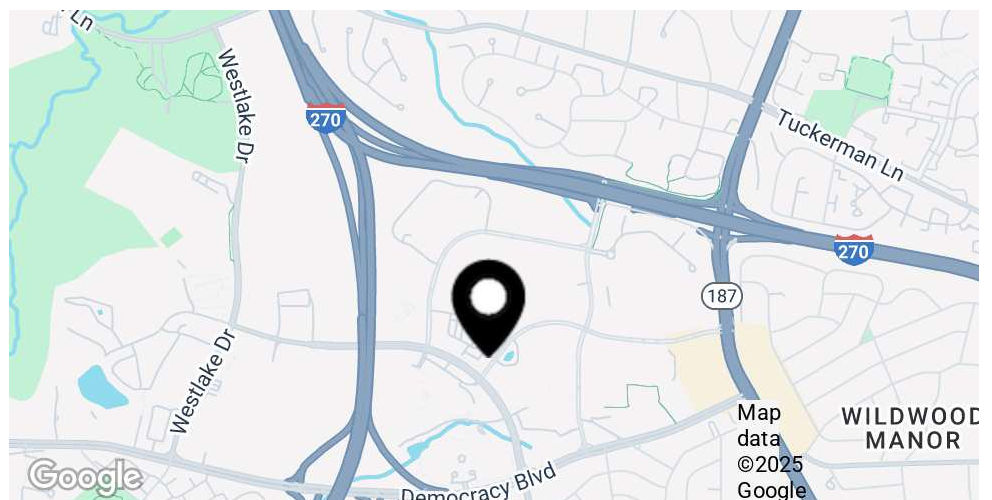
Date Available

Immediately

Suite 200

13,971 SF

Immediately



Brent Prossner

410.659.1234 x122
bprossner@lpc.com

Merrill Turnbull

202.513.6713
mturnbull@lpc.com

Lincoln

6555 ROCK SPRING DRIVE

Photos
235,417 SF

Bethesda, MD 20817



Brent Prossner
410.659.1234 x122
bprossner@lpc.com

Merrill Turnbull
202.513.6713
mturnbull@lpc.com

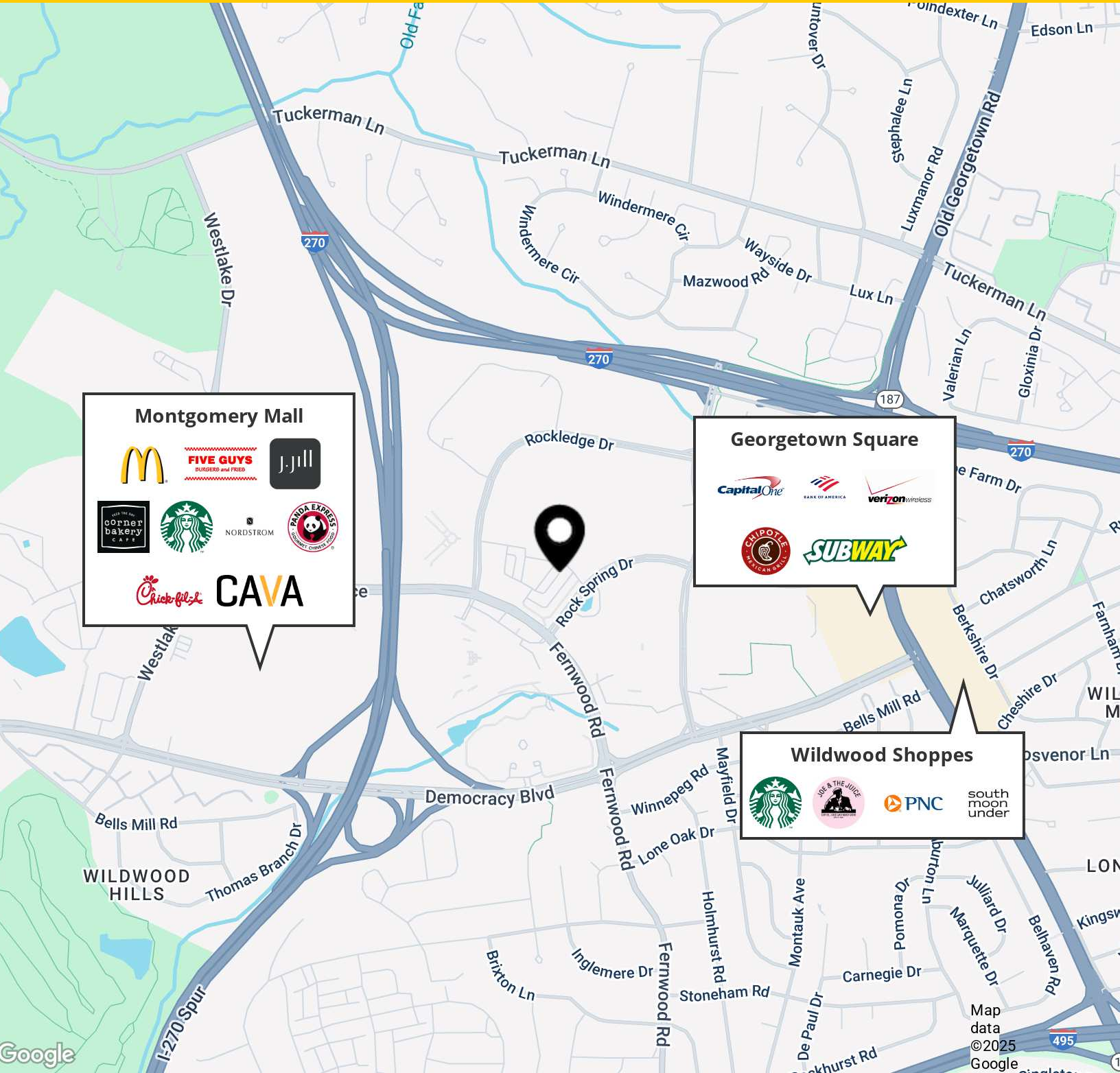
Lincoln

6555 ROCK SPRING DRIVE

Nearby Bethesda Amenities

235,417 SF

Bethesda, MD 20817



Brent Prossner

410.659.1234 x122
bprossner@lpc.com

Merrill Turnbull

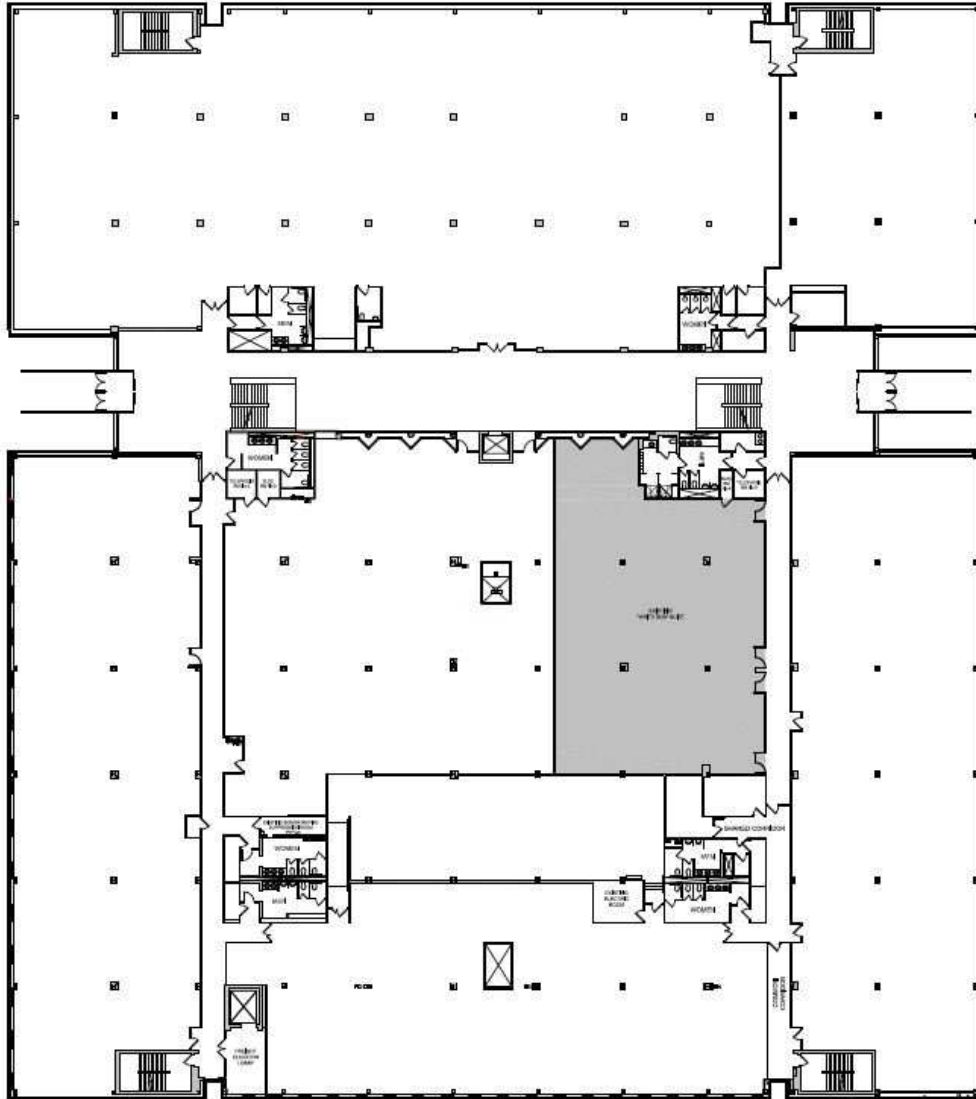
202.513.6713
mturnbull@lpc.com

Lincoln

6555 ROCK SPRING DRIVE

Suite 280B

Bethesda, MD 20817



Suite	Size	Description
Suite 280B	5,896 SF	Available Immediately

Brent Prossner
410.659.1234 x122
bprossner@lpc.com

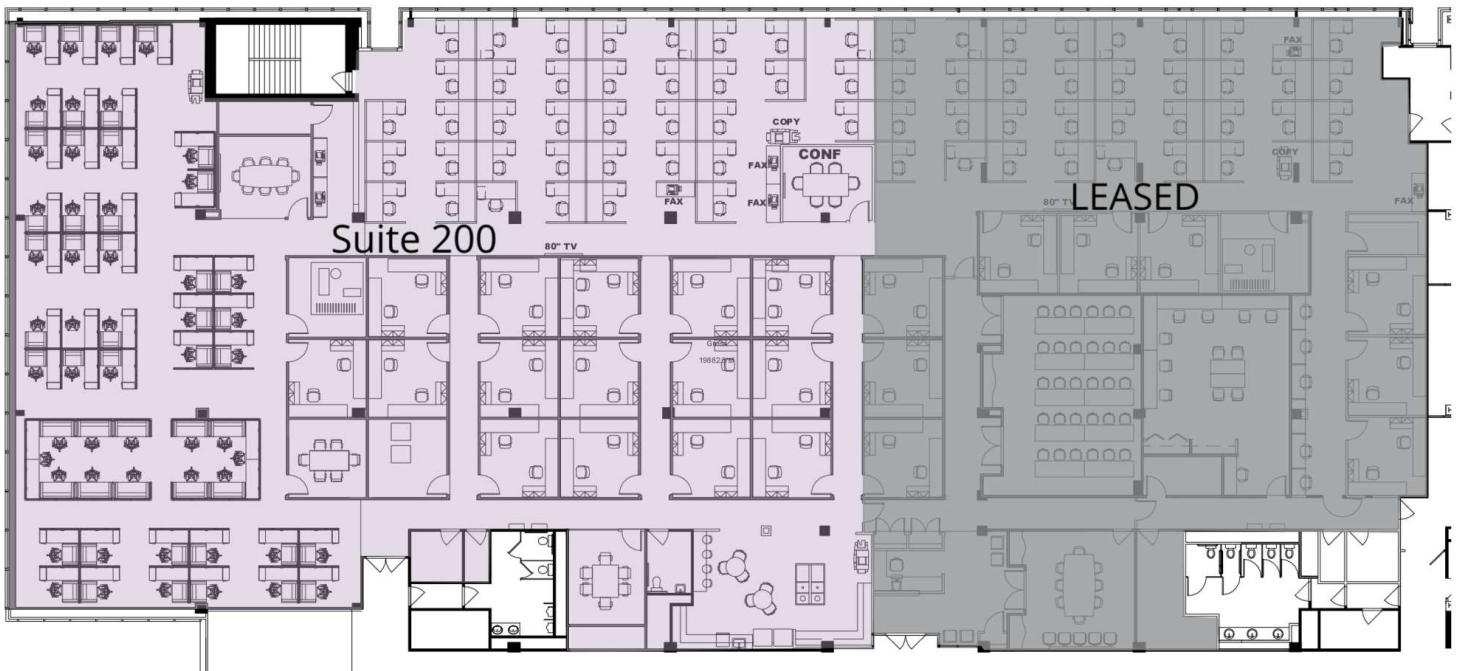
Merrill Turnbull
202.513.6713
mturnbull@lpc.com

Lincoln

6555 ROCK SPRING DRIVE

Suite 200

Bethesda, MD 20817



Suite	Size	Description
■ Suite 200	13,971 SF	Available Immediately

Brent Prossner

410.659.1234 x122
bprossner@lpc.com

Merrill Turnbull

202.513.6713
mturnbull@lpc.com

Lincoln



6555 ROCK SPRING DRIVE

Bethesda, MD 20817

Leasing Information:
410.659.1234

Brent Prossner
410.659.1234 x122
bprossner@lpc.com

Merrill Turnbull
202.513.6713
mturnbull@lpc.com

Lincoln

Lincoln Property Company
300 W Pratt Street Suite 520
Baltimore, MD 21201

www.lpc.com