

**65,765**  
**SQUARE FEET**  
**INDUSTRIAL**  
**BUILDING**

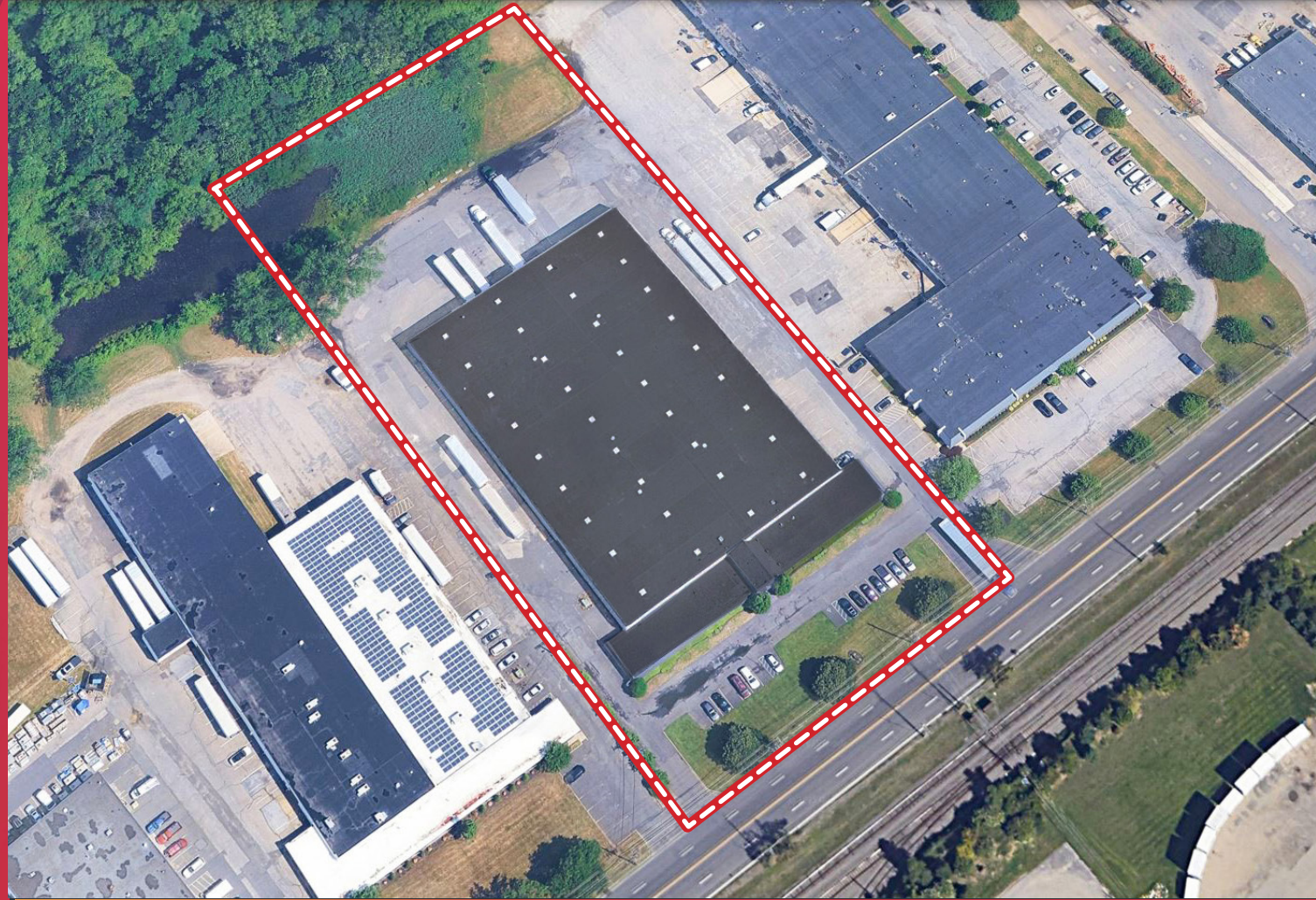
**FULL BUILDING**  
**AVAILABLE**  
**FOR LEASE**

**NEW LED LIGHTING**  
**COMING**

**PARKING AREA WILL**  
**BE MILLED & PAVED**

**IDEAL LOCATION**  
**MINUTES FROM**  
**TACONY-PALMYRA**  
**BRIDGE & I-95**

**How & Where May We Help You?**



**AVAILABLE FOR LEASE**

**2611 RIVER ROAD**

**CINNAMINSON, NJ**

OWNED BY

**Camber**  
**Real Estate**  
**Partners**

**MP** **MARCUS**  
**PARTNERS**

**Scott Mertz, SIOR**  
+1 856 802 6529  
scott.mertz@naimertz.com

**NAI Mertz**  
21 Roland Avenue | Mount Laurel, NJ 08054  
+1 856 234 9600 | naimertz.com

**NAIMertz**  
COMMERCIAL REAL ESTATE SERVICES, WORLDWIDE

**AVAILABLE FOR LEASE**

# 2611 RIVER ROAD

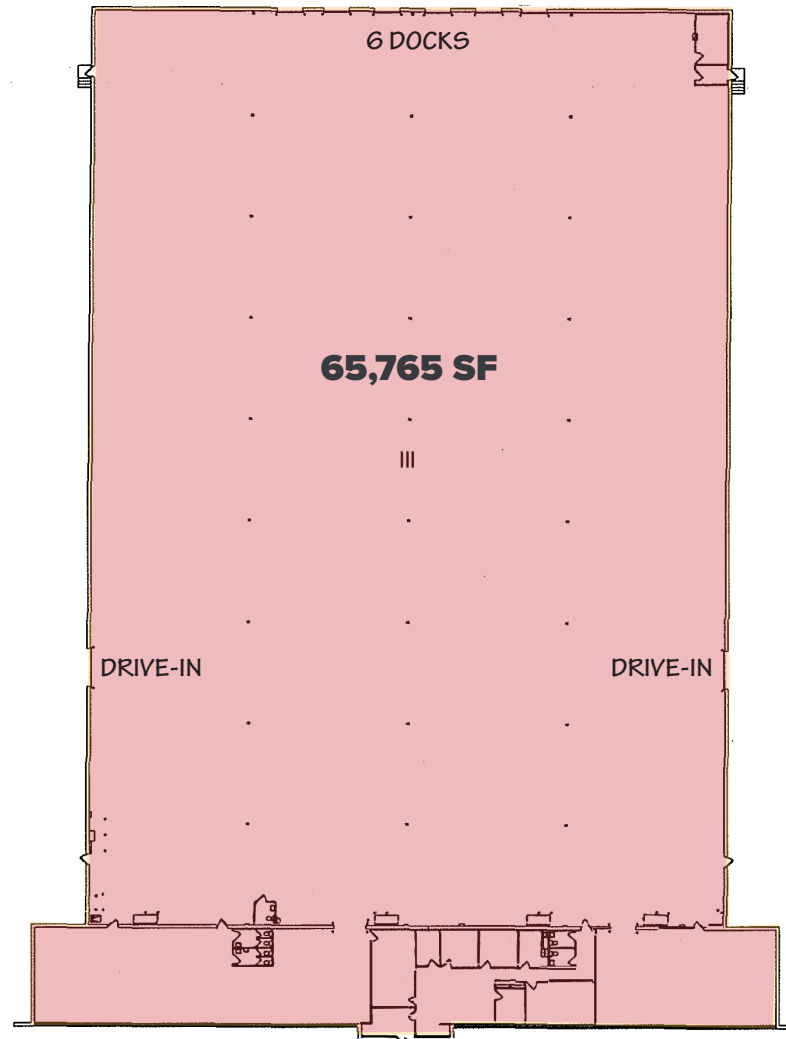
CINNAMINSON, NJ

## BUILDING DESCRIPTION

- 65,765 SF industrial building
- Full building available for lease
- 4.36 acre lot
- (6) 8' x 10' dock doors
- (2) 12' x 14' drive-in doors
- Clear heights: 17'10" - 18'6"
- Column spacing: 32' x 50'
- 1200 amp electrical service
- Zoning: LI - Light Industrial
- 63 parking spaces
- Public water & sewer
- 2,294 office area, air conditioned
- Ideal location minutes from Tacony-Palmyra Bridge & I-95

**NEW LED LIGHTING COMING**

**PARKING AREA WILL  
BE MILLED & PAVED**



# LOCATION INFORMATION



## AVAILABLE FOR LEASE 2611 RIVER ROAD

CINNAMINSON, NJ

### Distance to

Route 130	1.8 mi
Route 73	3 mi
Tacony-Palmyra Bridge	3 mi
I-95 N	4.5 mi
Betsy Ross Bridge	7.5 mi
Center City Philadelphia	12 mi

OWNED BY

Camber  
Real Estate  
Partners

MP MARCUS  
PARTNERS

### Scott Mertz, SIOR

+1 856 802 6529

scott.mertz@naimertz.com

### NAI Mertz

21 Roland Avenue | Mount Laurel, NJ 08054

+1 856 234 9600 | naimertz.com

NO WARRANTY OR REPRESENTATION, EXPRESS OR IMPLIED, IS MADE AS TO THE ACCURACY OF THE INFORMATION CONTAINED HEREIN, AND THE SAME IS SUBMITTED SUBJECT TO ERRORS, OMISSIONS, CHANGE OF PRICE, RENTAL OR OTHER CONDITIONS, PRIOR SALE, LEASE OR FINANCING, OR WITHDRAWAL WITHOUT NOTICE, AND OF ANY SPECIAL LISTING CONDITIONS IMPOSED BY OUR PRINCIPALS NO WARRANTIES OR REPRESENTATIONS ARE MADE AS TO THE CONDITION OF THE PROPERTY OR ANY HAZARDS CONTAINED THEREIN ARE ANY TO BE IMPLIED.

NAIMertz

COMMERCIAL REAL ESTATE SERVICES, WORLDWIDE