

AVAILABLE FOR LEASE

±7,891 SF INDUSTRIAL CONDO



16130 WEST BERNARDO DRIVE
SAN DIEGO, CA 92127

GREG MARX, SIOR

Senior Vice President | Partner
gmarx@voitco.com
858.458.3302 [Direct]
Lic. # 01940696

CARTER SHANNON

Associate
cshannon@voitco.com
949.433.5961 [Direct]
Lic. # 02244724

Voit

REAL ESTATE SERVICES

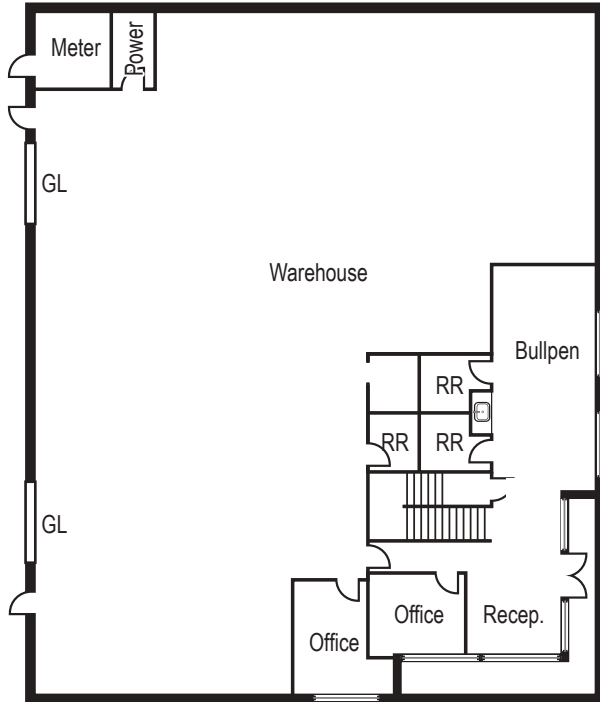
PROPERTY FEATURES

- ±7,891 SF Industrial Condo Available For Lease
- Approx. 25% Office / 75% Warehouse
- Upstairs Office Mezzanine (Quality Finishes)
- 2 Electric Grade Level Roll-Up Doors
- 22' - 24' Clear Height
- 3/1,000 Parking
- Heavy Power (480 V Step Up) (*Tenant to Verify*)
- Fully Sprinklered
- Walking Distance to Retail Amenities
- Easy Access to Interstate 15
- Available Immediately

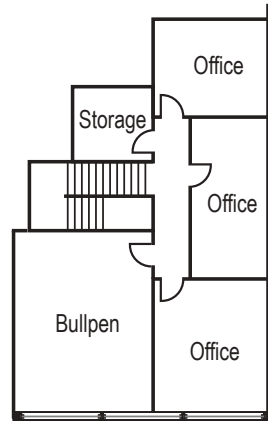


\$1.50/SF NNN YEAR 1 PROMO RATE

FLOOR PLAN



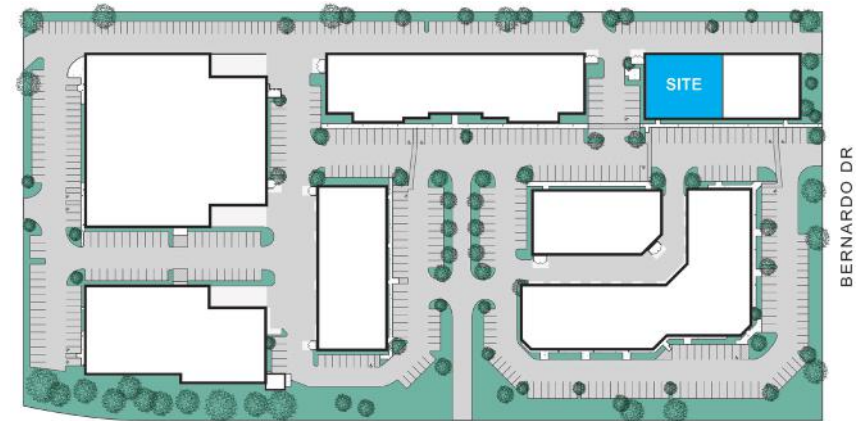
1ST FLOOR



2ND FLOOR



SITE PLAN

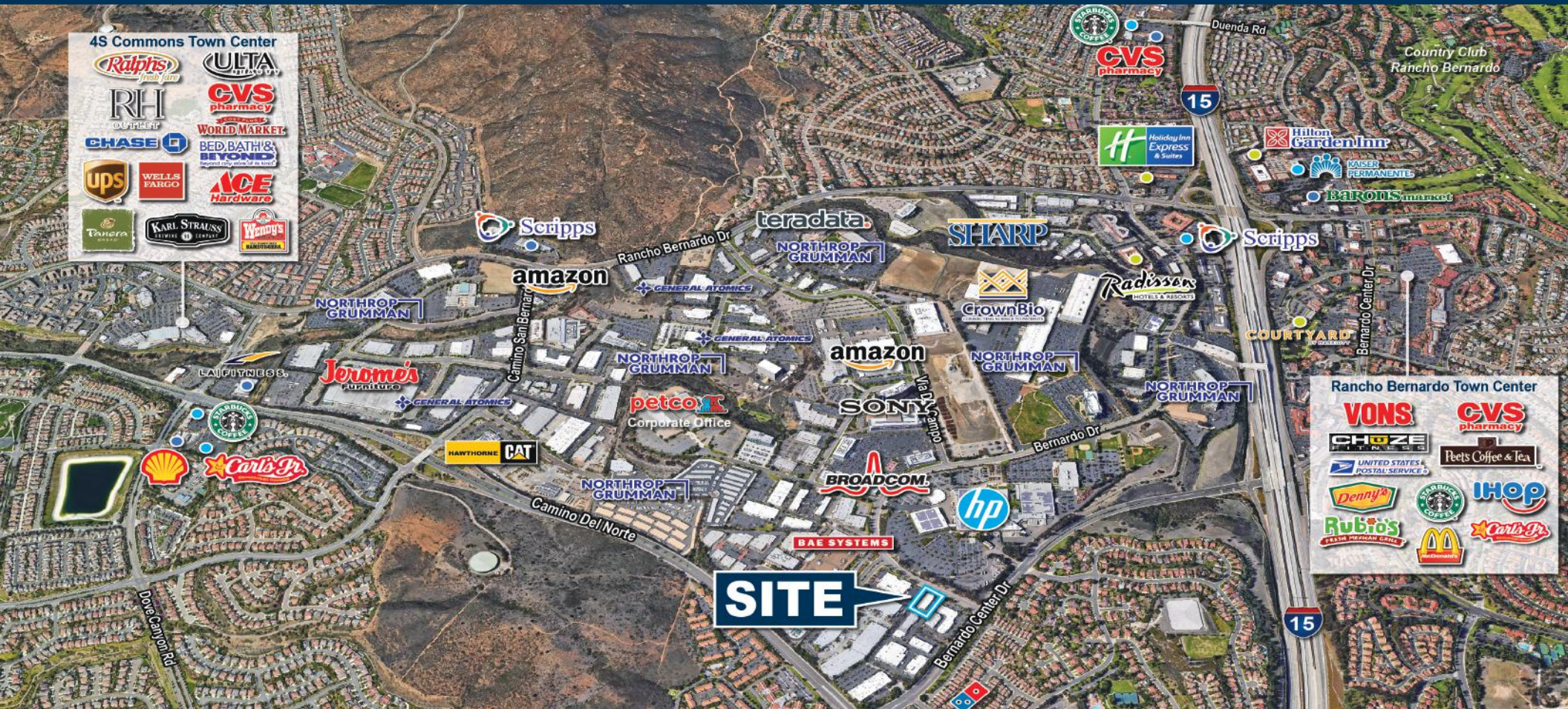


BERNARDO CENTER DR

BERNARDO DR

16130 W BERNARDO DRIVE

SAN DIEGO, CA 92127



GREG MARX, SIOR

Senior Vice President
Lic. # 01940696
gmarx@voitco.com
858.458.3302 [Direct]

CARTER SHANNON

Associate
Lic. # 02244724
cshannon@voitco.com
949.433.5961 [Direct]

Voit

REAL ESTATE SERVICES

4180 La Jolla Village Drive, Suite 100, La Jolla, California 92037 | 858.453.0505 | 858.408.3976 Fax | Lic #01991785 | www.voitco.com

Licensed as Real Estate Salespersons by the DRE. The information contained herein has been obtained from sources we deem reliable. While we have no reason to doubt its accuracy, we do not guarantee it. ©2025 Voit Real Estate Services, Inc. All Rights Reserved.