



Keegan & Coppin  
COMPANY, INC.

FOR LEASE

141 STONY CIRCLE  
SANTA ROSA, CA

THE COURTYARD AT STONY POINT  
PROFESSIONAL OFFICE SPACE



Go beyond broker.

PRESENTED BY:

**DAVE PETERSON, SENIOR PARTNER**  
LIC # 01280039 (707) 528-1400, EXT 210  
[DPETERSON@KEEGANCOPPIN.COM](mailto:DPETERSON@KEEGANCOPPIN.COM)



# PROPERTY DETAILS



141 STONY CIRCLE  
SANTA ROSA, CA

## THE COURTYARD AT STONY POINT

### PROPERTY INFORMATION

#### HIGHLIGHTS

- 2,441+/- to 12,173+/- sf
- Newly Remodeled Center Atrium
- 4/1,000 sf Parking
- Retail Amenities Across the Street
- Excellent Glass line
- One Mile West of Downtown Santa Rosa and Half a Mile North of Highway 12
- Adjacent to Finley Avenue Community Park
- On-site Property Management

#### OFFICE SPACE

**Suite 100:** 4,502+/- sq ft

**Suite 202:** 2,873+/- sq ft

**Suite 204:** 2,441+/- sq ft

**Suite 260:** 5,614+/- sq ft

#### DESCRIPTION

3 Private offices, conference room, kitchenette, reception, IT room and open space for cubicles.

5 Private offices, conference room, and kitchen.

5 Private offices (1 could be a conference room), open area with kitchenette.

4 Private offices, 2 conference rooms, IT, kitchenette & large open space for cubicles.

### LEASE TERMS

#### Rate

\$1.85 PSF

#### Terms

Full Service

Rate includes utilities, building services and property expenses

#### Parking

160 Surface Parking Spaces Covered Parking

#### PRESENTED BY:

DAVE PETERSON, SENIOR PARTNER  
KEEGAN & COPPIN CO., INC.  
LIC # 01280039 (707) 528-1400, EXT 210  
DPETERSON@KEEGANCOPPIN.COM



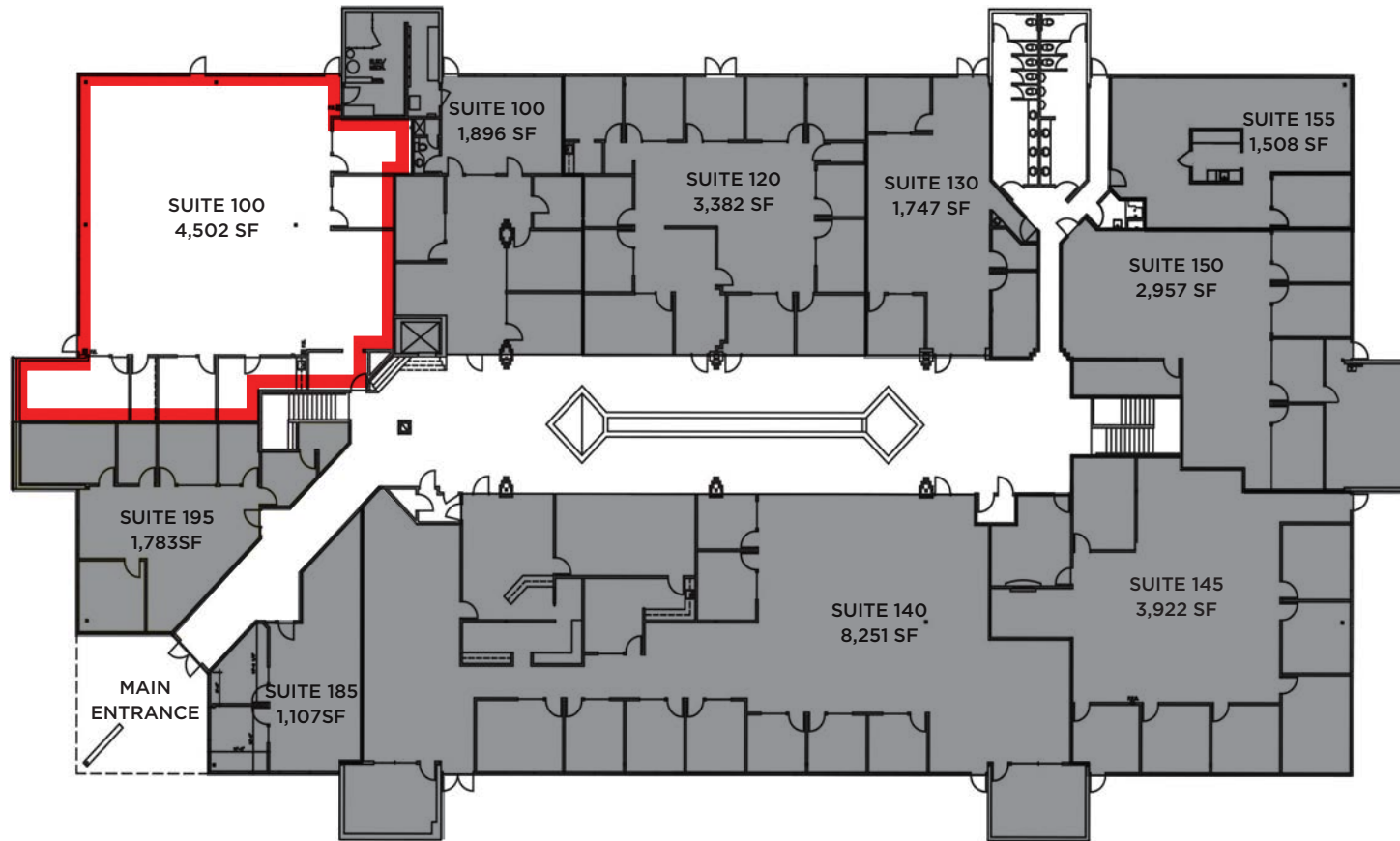
# FLOOR PLAN

## 1ST FLOOR



141 STONY CIRCLE  
SANTA ROSA, CA

### THE COURTYARD AT STONY POINT



 AVAILABLE

 NOT AVAILABLE

**PRESENTED BY:** DAVE PETERSON, SENIOR PARTNER  
KEEGAN & COPPIN CO., INC.  
LIC # 01280039 (707) 528-1400, EXT 210  
DPETERSON@KEEGANCOPPIN.COM



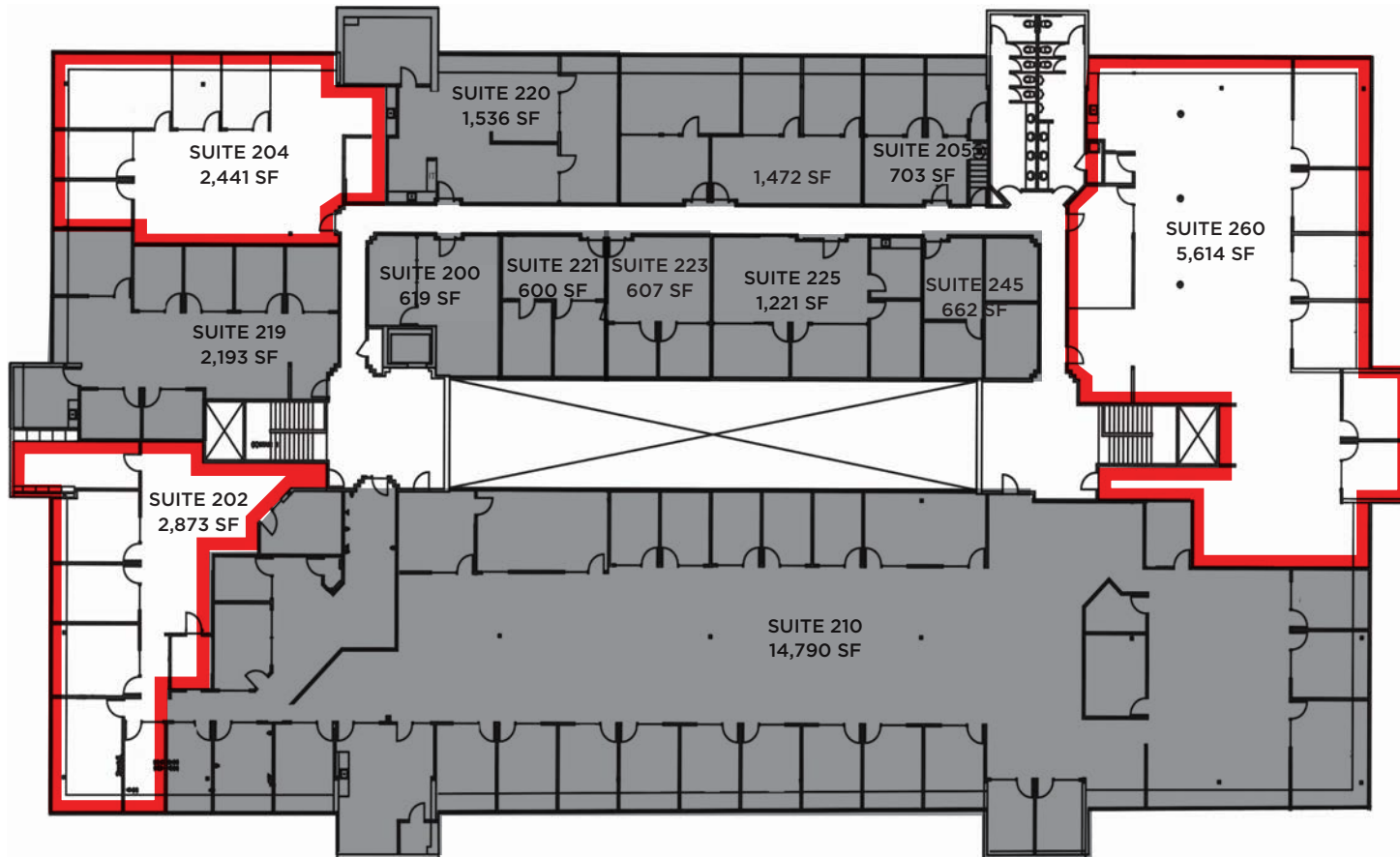
# FLOOR PLAN

## 2ND FLOOR



141 STONY CIRCLE  
SANTA ROSA, CA

### THE COURTYARD AT STONY POINT



 AVAILABLE  
 NOT AVAILABLE

**PRESENTED BY:**

DAVE PETERSON, SENIOR PARTNER  
KEEGAN & COPPIN CO., INC.  
LIC # 01280039 (707) 528-1400, EXT 210  
DPETERSON@KEEGANCOPPIN.COM



# PROPERTY PHOTOS



141 STONY CIRCLE  
SANTA ROSA, CA

## THE COURTYARD AT STONY POINT



**PRESENTED BY:**

**DAVE PETERSON, SENIOR PARTNER**  
**KEEGAN & COPPIN CO., INC.**  
LIC # 01280039 (707) 528-1400, EXT 210  
DPETERSON@KEEGANCOPPIN.COM



# VICINITY MAP



141 STONY CIRCLE  
SANTA ROSA, CA

## THE COURTYARD AT STONY POINT



www.stggroup.com

Keegan & Coppin Co., Inc.  
1355 North Dutton Avenue  
Santa Rosa, CA 95401  
www.keegancoppin.com  
(707) 528-1400

The above information, while not guaranteed, has been secured from sources we believe to be reliable. Submitted subject to error, change or withdrawal. An interested party should verify the status of the property and the information herein.

REPRESENTED BY:

**DAVE PETERSON, SENIOR PARTNER**  
LIC # 01280039 (707) 528-1400, EXT 210  
DPETERSON@KEEGANCOPPIN.COM