

For sublease

Up to 198,337 SF

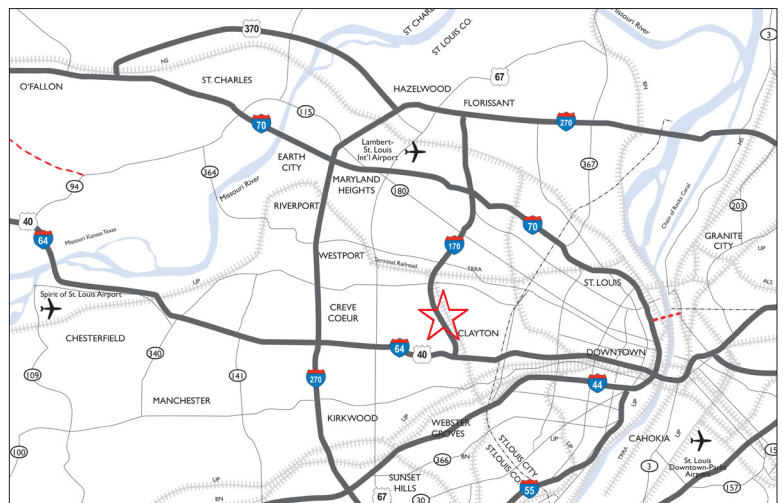
9383-9387 Dielman Industrial Drive, Olivette, MO 63132



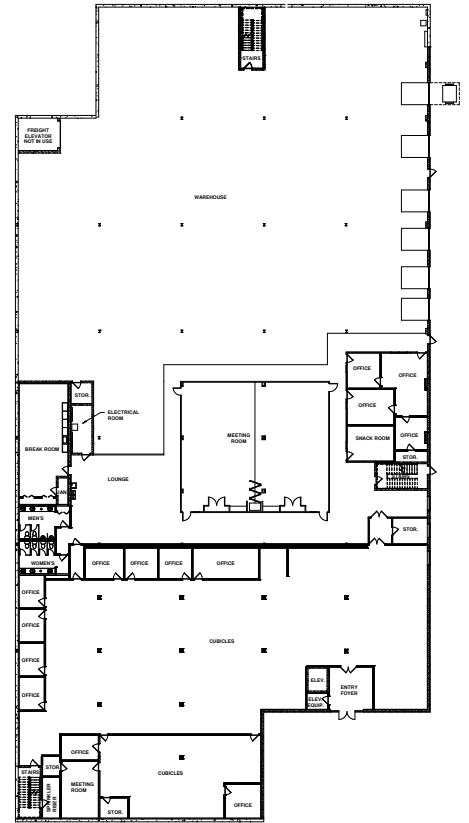
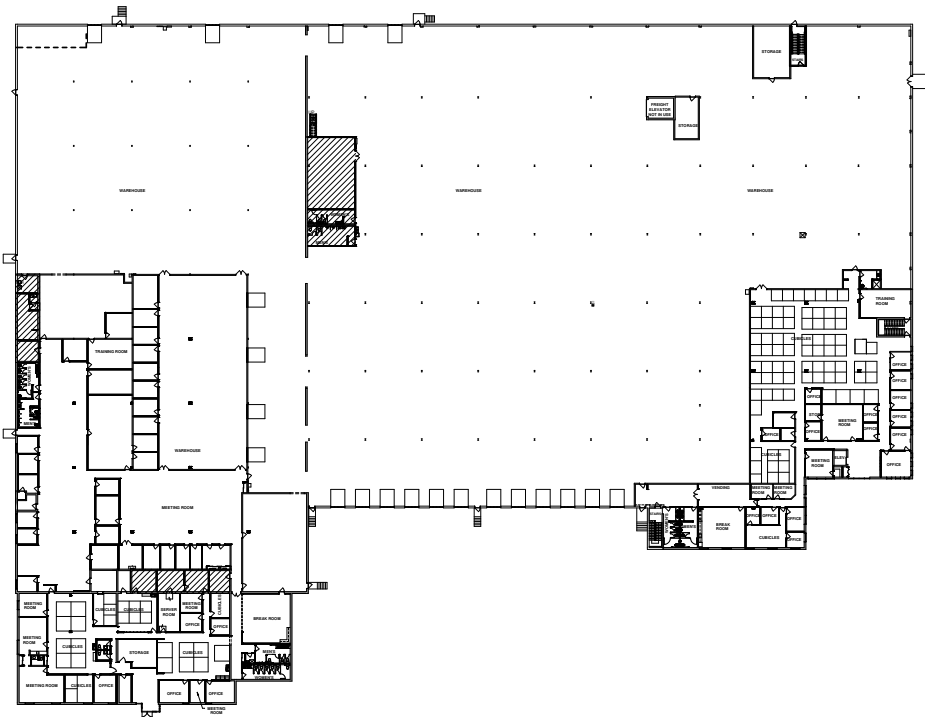
Property specifications

| | |
|---------------------------------|--|
| Size: | 32,600 SF - 198, 337 SF |
| Loading: | 17 dock doors |
| Clear height: | Varies |
| Power: | 3-phase heavy power |
| Parking: | Abundant |
| Storage: | Potential outside storage or truck parking approx. 1.3 acres |
| Sublease term through 3/31/2027 | |

Asking rate: \$3.75/SF NNN



Floor plans





Chris Schmidt
Managing Director
+1 314 261 7378
chris.schmidt@jll.com

jll.com/st-louis

Although information has been obtained from sources deemed reliable, JLL does not make any guarantees, warranties or representations, express or implied, as to the completeness or accuracy as to the information contained herein. Any projections, opinions, assumptions or estimates used are for example only. There may be differences between projected and actual results, and those differences may be material. JLL does not accept any liability for any loss or damage suffered by any party resulting from reliance on this information. If the recipient of this information has signed a confidentiality agreement with JLL regarding this matter, this information is subject to the terms of that agreement. ©2025 Jones Lang LaSalle Brokerage, Inc. All rights reserved.