

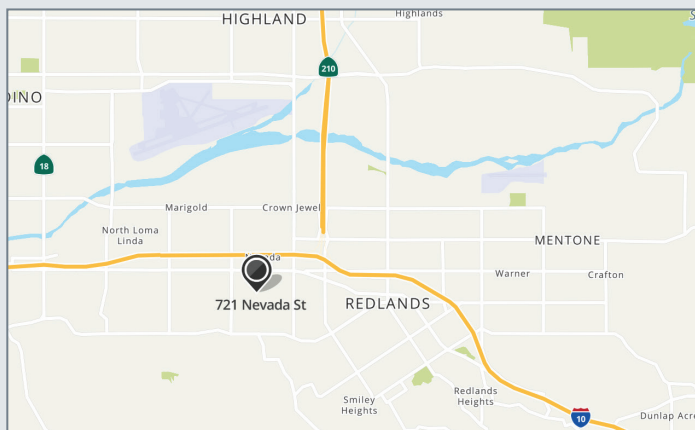


ARES
INDUSTRIAL
MANAGEMENT

EMPIRE BUSINESS PARK

1915 W REDLANDS BLVD & 721 NEVADA ST, REDLANDS, CA 92373

±1,920 Leasable SQ FT | Unit #206-B | Flex/Industrial w/Office



BUILDING HIGHLIGHTS

- Campus Setting with Diverse Tenant Mix
- Storefront Signage Visibility
- Climate Controlled Offices
- Warehouse with Ground Level Loading
- Easy Delivery Truck Access
- Near Amenities & USPS Facility
- Close Proximity to I-10 & 210 Fwy Access

ERIC L. HUTCHINS

CA DRE Salesperson License #01515547
1255 West Colton Avenue, Suite 525
Redlands, CA 92374
909-255-1210



INLAND EMPIRE
COMMERCIAL
REAL ESTATE

CA DRE Broker License #01905051

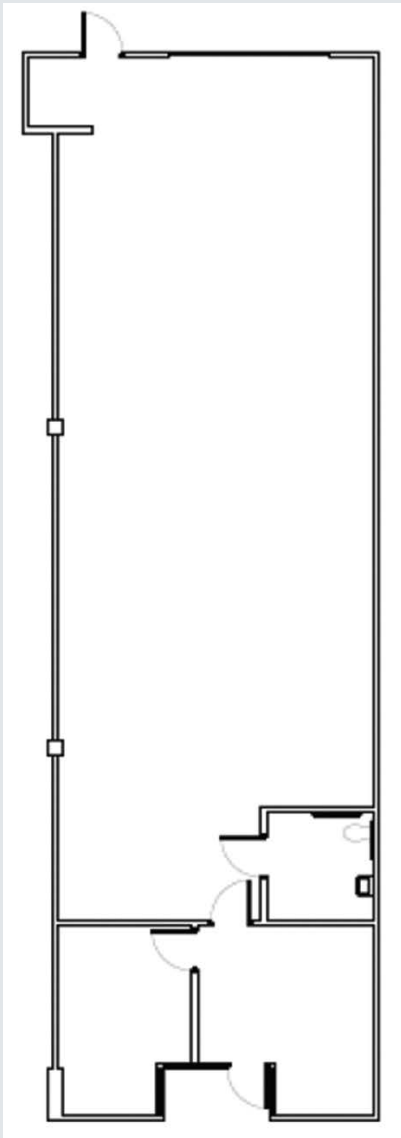


ARES
INDUSTRIAL
MANAGEMENT

EMPIRE BUSINESS PARK

1915 W REDLANDS BLVD & 721 NEVADA ST, REDLANDS, CA 92373

±1,920 Leasable SQ FT | Unit #206-B | Flex/Industrial w/Office



ERIC L. HUTCHINS

CA DRE Salesperson License #01515547
1255 West Colton Avenue, Suite 525
Redlands, CA 92374
909-255-1210



INLAND EMPIRE
COMMERCIAL
REAL ESTATE

CA DRE Broker License #01905051



**ARES
INDUSTRIAL
MANAGEMENT**

EMPIRE BUSINESS PARK

1915 W REDLANDS BLVD & 721 NEVADA ST, REDLANDS, CA 92373

±1,920 SF Leasable SQ FT | Unit #206-B | Flex/Industrial w/Office



ERIC L. HUTCHINS

CA DRE Salesperson License #01515547
1255 West Colton Avenue, Suite 525
Redlands, CA 92374
909-255-1210



**INLAND EMPIRE
COMMERCIAL
REAL ESTATE**

CA DRE Broker License #01905051