

LOGISTICS CENTER AT
— 595 —



6890 & 6910 W State Road 84 / Davie, Florida 33317

FOR LEASE | STATE-OF-THE-ART INDUSTRIAL PARK
~19,000 SF UP TO ~182,773 SF AVAILABLE

LOGISTICS CENTER AT — 595 —

Property Highlights

Logistics Center at 595 is a cutting-edge industrial development featuring two state-of-the-art warehouses totaling 182,773 square feet of premium Class A+ space. Strategically located along I-595 near University Drive in Davie, FL, these modern facilities offer unparalleled connectivity and exceptional features.

- Clear Height: 32'
- Auto Parking: 142 Spaces
- Column Spacing: 40' x 54' (speed bay 60')
- Dock Doors: 30 Doors per Building / Door Size 9' x 10'
- Drive-In Doors: 2 Drive In Doors per Building / Door Size 14' x 16'
- Trailer Parking: 15 Trailer Drops
- Floor Slab: 6" reinforced with 50/30 FF/FL
- Tilt-Wall Construction
- Sprinkler: ESFR System
- Electrical: 3,200 amps (1,600 amps per building)
- Roofing: R-19 Roof Insulation
- Zoning: M-1 Industrial District, Light Manufacturing & Showroom

[Download Site Plan](#)



CONNECT FASTER. MOVE QUICKER.

Location Highlights

Strategically positioned at the crossroads of Broward County, Logistics Center at 595 boasts an unparalleled location that maximizes accessibility and visibility. Situated with immediate access and frontage on I-595, this industrial park offers exceptional signage opportunities and a direct link to the tri-county region.

In a market where location defines success, Logistics Center at 595's strategic positioning offers unmatched connectivity—mere minutes from Fort Lauderdale-Hollywood International Airport, Port Everglades, and the region's extensive highway network. This connectivity, combined with access to South Florida's robust workforce, creates the ideal environment for businesses seeking to optimize their distribution capabilities and elevate their market presence.

Drive Times

INTERSTATES:

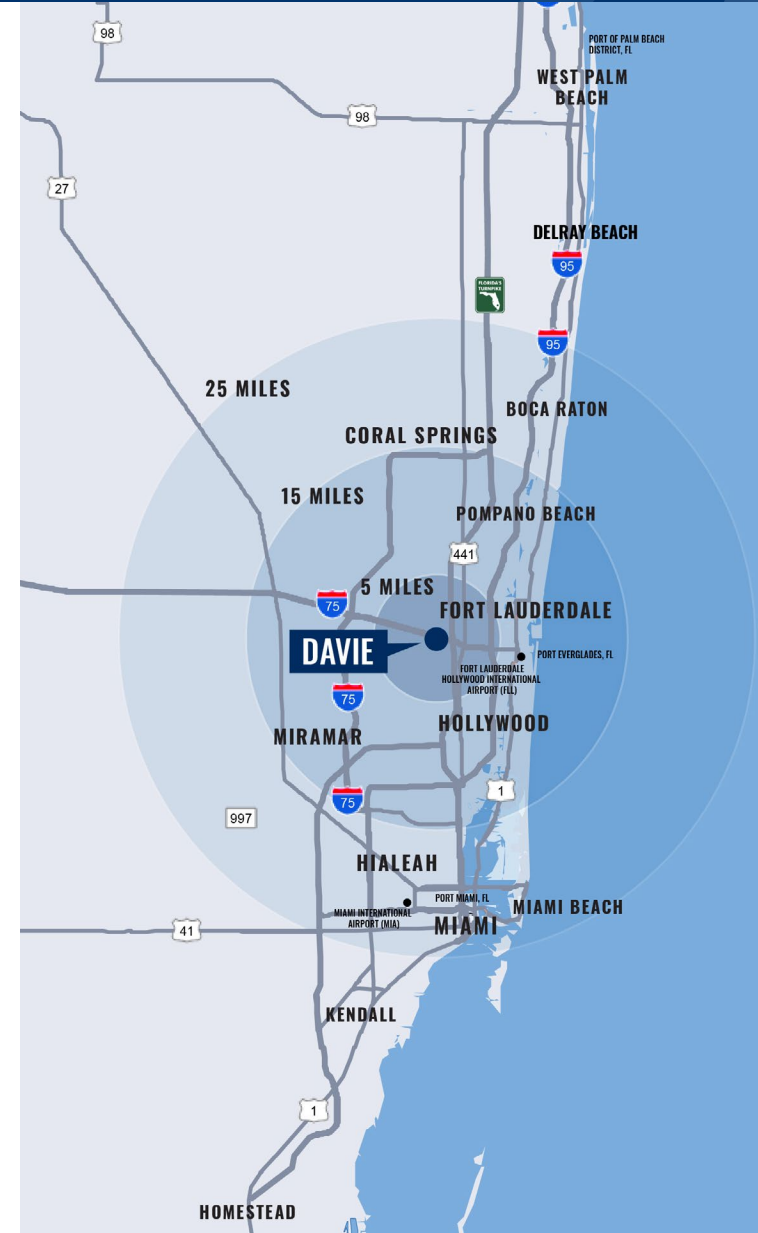
- TURNPIKE - **6 MIN**
- I-95 - **8 MIN**
- I-75 - **7 MIN**
- I-595 - **IMMEDIATE ACCESS**

PORTS:

- PORT EVERGLADES - **15 MIN**
- PORT OF MIAMI - **45 MIN**

AIRPORTS:

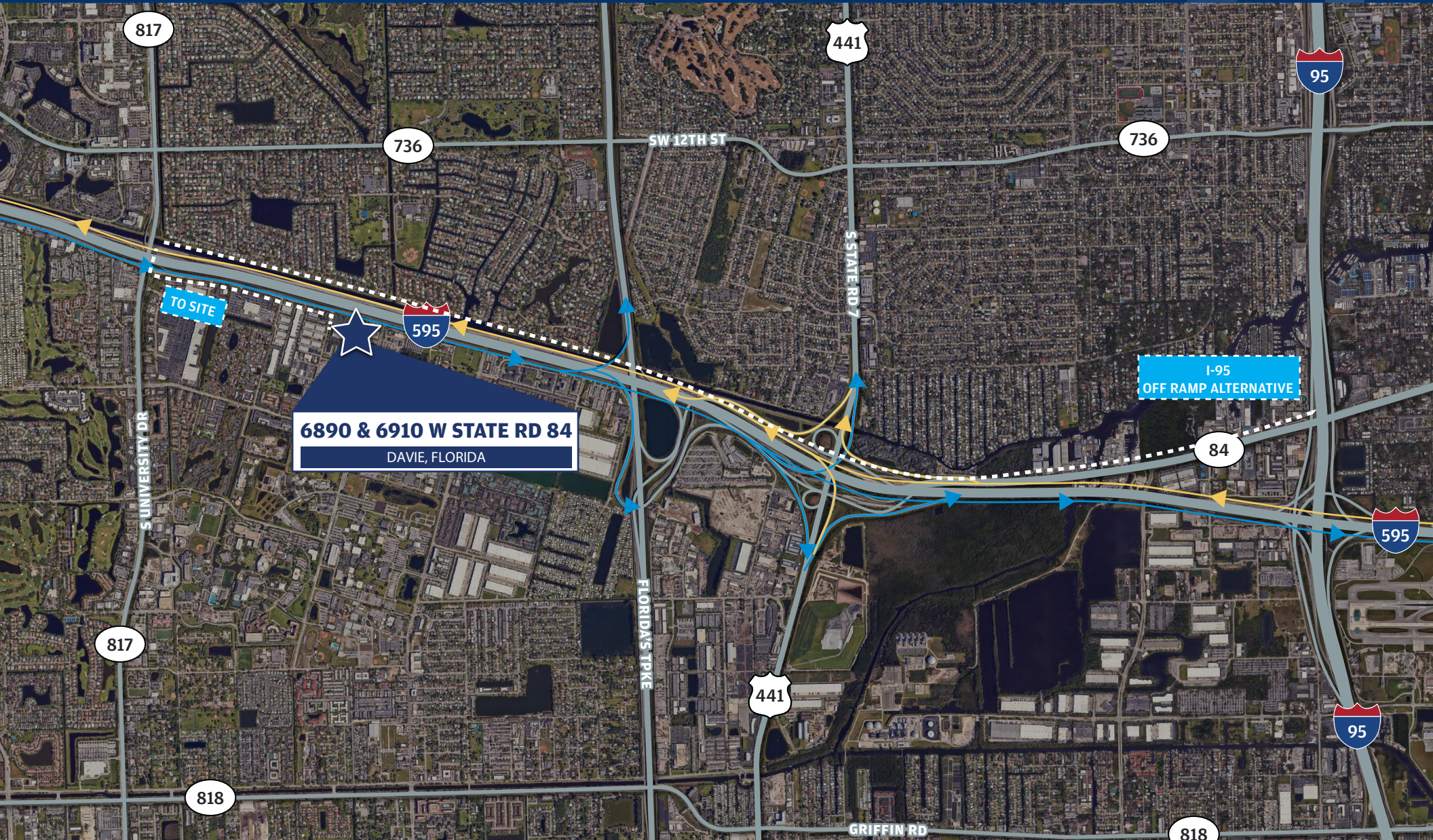
- FORT LAUDERDALE HOLLYWOOD INTERNATIONAL AIRPORT (FLL) - **12 MIN**
- MIAMI INTERNATIONAL AIRPORT (MIA) - **30 MIN**



LOGISTICS CENTER AT — 595 —

Highly-Amenitized Location





6890 & 6910 W STATE RD 84
DAVIE, FLORIDA

I-95
OFF RAMP ALTERNATIVE



LOGISTICS CENTER AT
— 595 —



For More Information, Contact:

STEVE MEDWIN, SIOR, CCIM
+1 305 615 4415
steve.medwin@streamrealty.com

NICK WIGODA, SIOR
+1 305 615 4461
nick.wigoda@streamrealty.com

201 S Biscayne Blvd., Suite 1420, Miami, FL 33131 | +1 305 351 0470